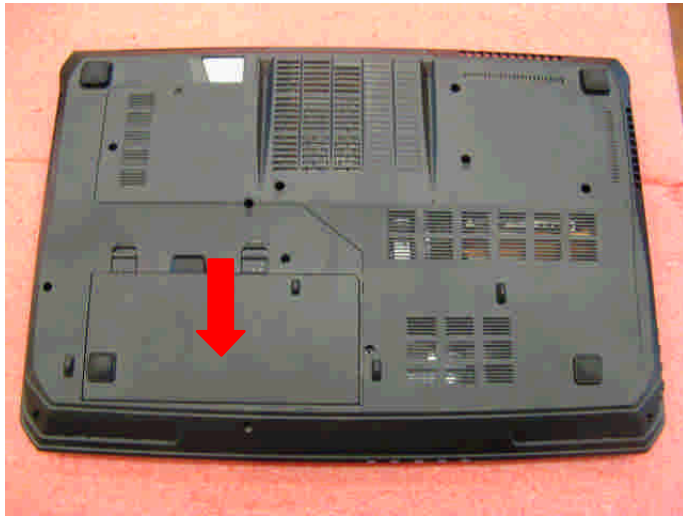


## **GT70 (MS-1762) Disassembly Guide**

- 1、 BATTERY PACK
- 2、 BOTTOM DOOR ASSY
- 3、 HDD MODULE
- 4、 THERMAL-KIT、 CPU AND DRAM
- 5、 ODD MODULE
- 6、 SEPARATE UPPER CASE AND LOWER CASE
- 7、 LOWER CASE ASSY
- 8、 UPPER CASE ASSY
- 9、 LCD MODULE ASSY

# GT70 (MS-1762) Disassembly Guide

## 1、 BATTERY PACK



1.1: Move the “Unlock” button base on left picture shows.

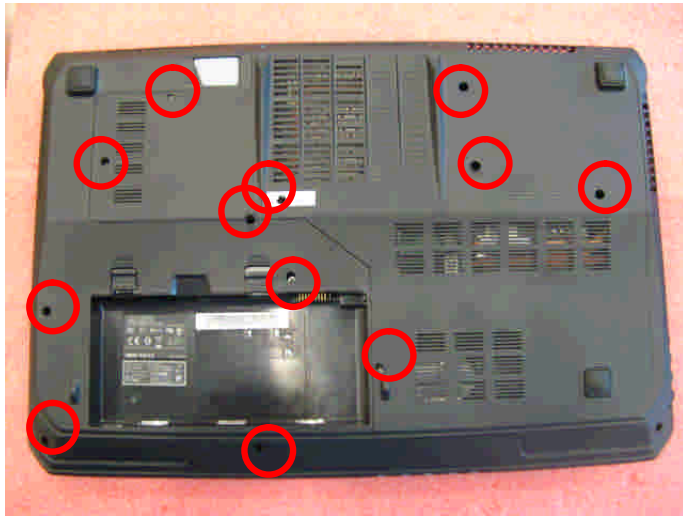


1.2: Release the “Release” button and move the battery pack base on left picture.

Component	P/N	Qty
Battery Pack	S9N-3496200-M47	1

# GT70 (MS-1762) Disassembly Guide

## 2、BOTTOM DOOR ASSY



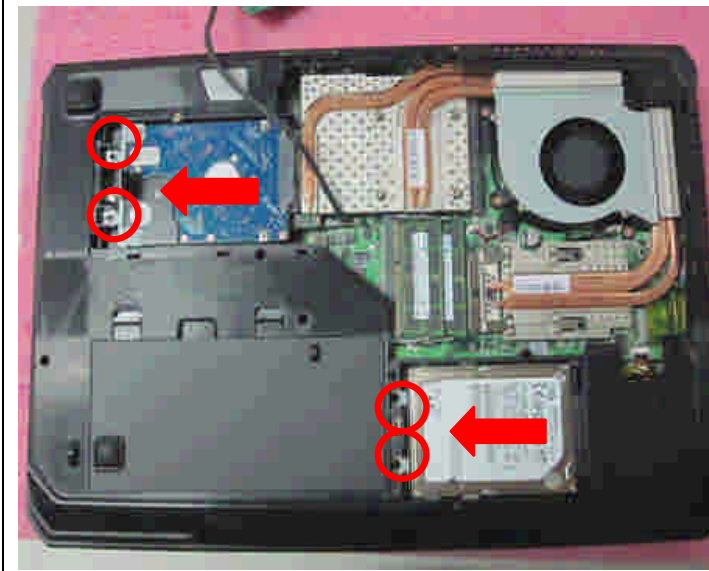
2.1: Remove the 12 screws (M2.5\*7mm). Then remove the Bottom door.

**Attention: the screw driver torque is: 1.8-2.2 gf-cm**

Component	P/N	Qty
Bottom door	E2P-761J211-Y31	1
Screw	E43-1257002-G68	12

# GT70 (MS-1762) Disassembly Guide

## 3、HDD MODULE



3.1: Remove the 4 screws (M2.5\*5mm); then remove the two HDD Module according to the direction as pic shows.

**Attention: the screw driver torque is 1.8-2.2Kgf-cm**

Component	P/N	Qty
Screw	E43-1255002-G68	4



3.2: Remove the 4 screws (M3\*4mm) that stabilize the two HDD brackets, then remove the HDD bracket.

**Attention: the screw driver torque is 1.8-2.2Kgf-cm**

Component	P/N	Qty
Screw	E43-1304009-G68	4
HDD Bracket	307-6F10112-C22	2
HDD Module	S71-2475702-W36	2

# GT70 (MS-1762) Disassembly Guide

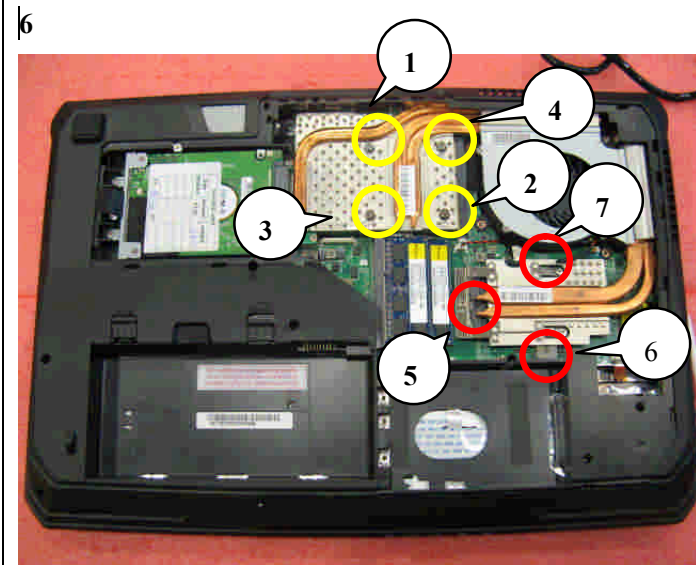
## 4、 THERMAL-KIT、 CPU AND DRAM



4.1: :Remove the 1 screw(M2.5\*5mm) and FAN cable, after that remove the Fan.

**Attention:** the screw driver torque is 1.8-2.2Kgf-cm

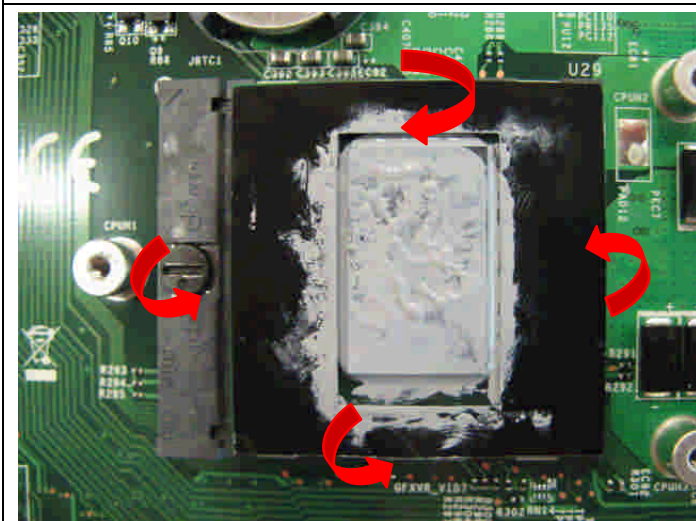
Component	P/N	Qty
Screw	E43-1255002-G68	1
FAN	E33-0800182-MC22	1



4.2: Remove the 3 screws (M2.5\*5mm) and 4 spring screws, after that remove the two Heatsink.

**Attention:** the screw driver torque is 1.8-2.2Kgf-cm

Component	P/N	Qty
Screw	E43-1255002-G68	3
Heatsink	E31-0405764-Y31	1
Heatsink	E31-0900332-TA9	1

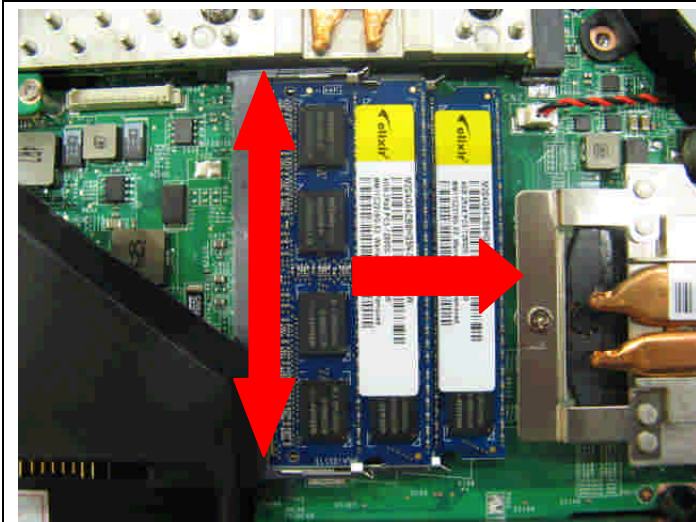


4.3: Open the CPU Slot with Screw Driver, then remove CPU Module as below.

Component	P/N	Qty
CPU	A13-2320186-I06	1

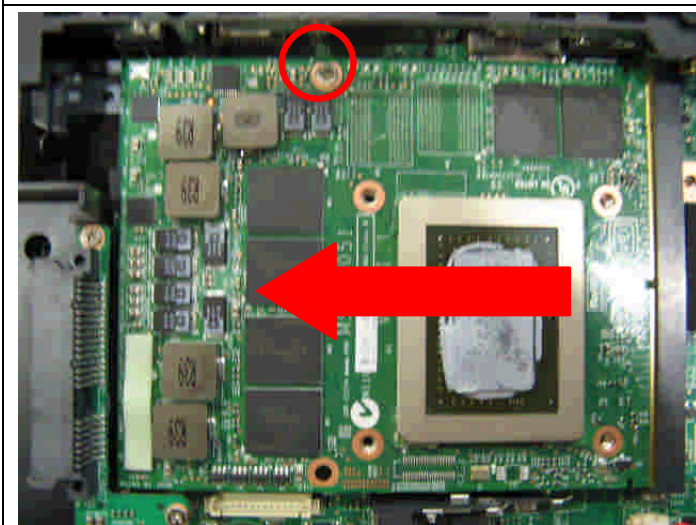
# GT70 (MS-1762) Disassembly Guide

## 4、 THERMAL-KIT、 CPU AND DRAM



4.4: Push the two side shielding of RAM as pic shows; Then remove the RAM module according the direction as pic shows.

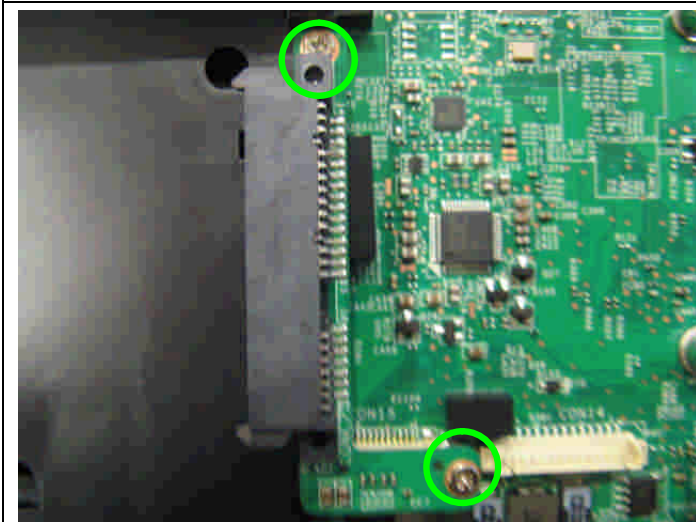
Component	P/N	Qty
RAM Module	S7C-S46AH03-E54	2



4.5: Remove 1 screw (M2.5\*5mm); then remove the VGA card as pic shows.

**Attention: the screw driver torque is: 1.8-2.2Kgf-cm**

Component	P/N	Qty
VGA Card	607-1W071-09S	1
Screw	E43-1255001-H29	1



4.6: Remove 2screws (M2\*4mm); then remove the HDD2 board.

**Attention: the screw driver torque is: 1.2-1.6Kgf-cm**

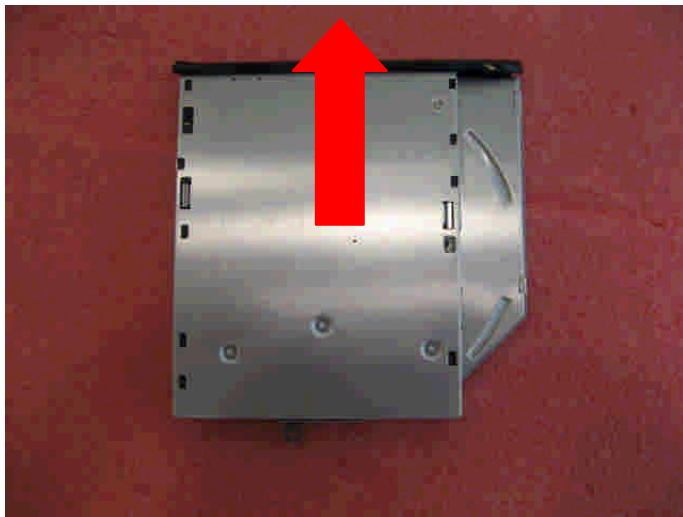
Component	P/N	Qty
HDD2 board	607-1762A-01S	1
Screw	E43-1204002-G68	2

# GT70 (MS-1762) Disassembly Guide

## 5. ODD MODULE



5.1: Remove the ODD Module according to the direction as pic shows.



5.2: Remove ODD Bezel as below.

Component	P/N	Qty
ODD Bezel	E2P-761F212-Y31	1



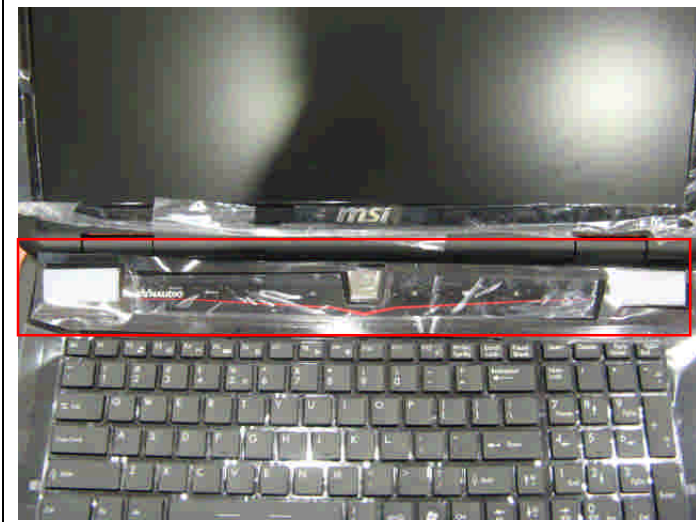
5.3: Remove 2pcs (M2\*3mm) Screws; Then remove ODD Bracket as below.

**Attention: the screw driver torque is 1.0-1.5Kgf-cm**

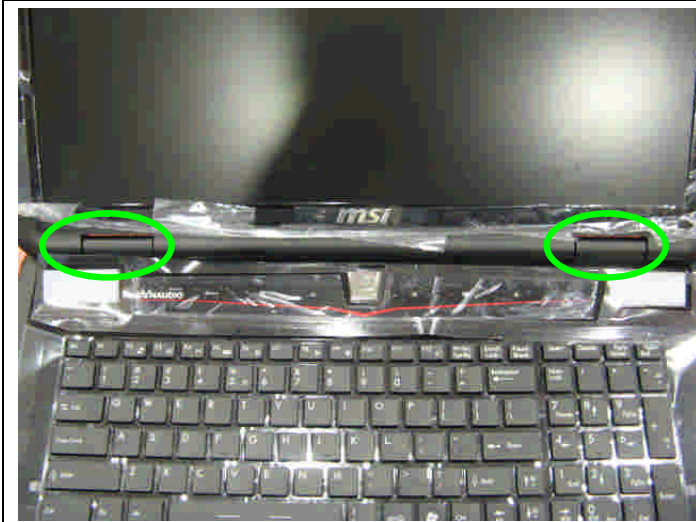
Component	P/N	Qty
Screw	E43-1203003-G68	2
ODD Bracket	E2M-7611311-C22	1
ODD Module	S7D-2270066-H44	1

# GT70 (MS-1762) Disassembly Guide

## 6. SEPARATE UPPER CASE AND LOWER CASE



6.1: Before remove K/B, firstly remove the Middle Cover. Care the Sensor board FPC below the cover. Remove the Sensor board



6.2: Remove the left and right hinge caps.

Component	P/N	Qty
Left Hinge cap	E2P-7610222-Y31	1
Right Hinge cap	E2P-7610321-Y31	1

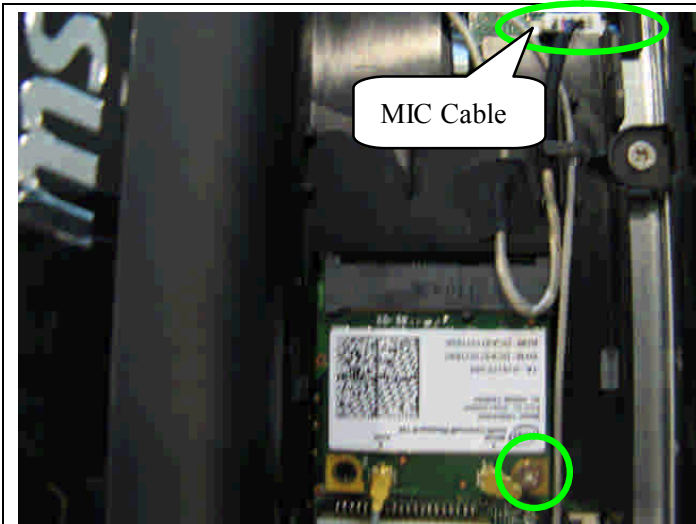


6.3: Remove the LVDS cable as pic shows.



# GT70 (MS-1762) Disassembly Guide

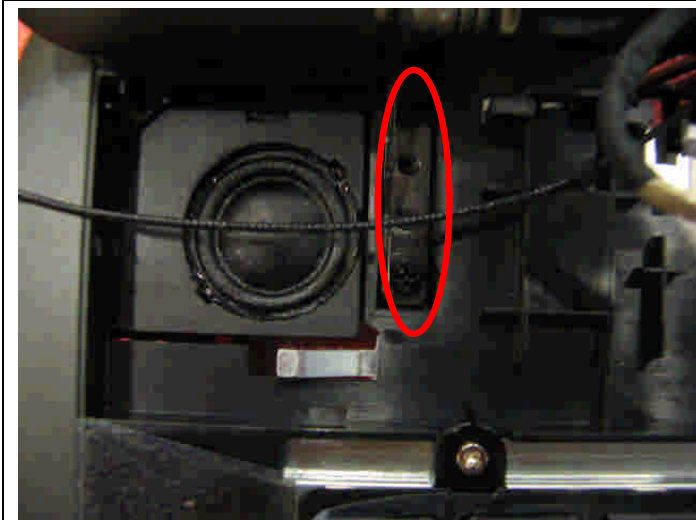
## 6. SEPARATE UPPER CASE AND LOWER CASE



6.4: Remove MIC cable, then remove 1 screw (M2\*3mm); last remove the two side wireless card antenna as pic shows.

**Attention: the screw driver torque is: 1.8-2.2Kgf-cm**

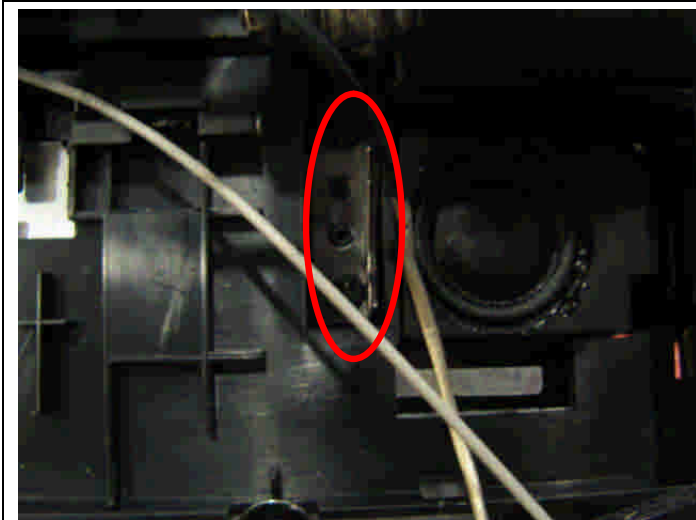
Component	P/N	Qty
WLAN Module	S57-08000C0-I06	1
Screw	E43-1203003-G68	1



6.5: Remove the 2 screws (M2.5\*7mm) that stabilize the left LCD hinge.

**Attention: the screw driver torque is 3.0-3.5Kgf-cm**

Component	P/N	Qty
Screw	E43-1257002-G68	2



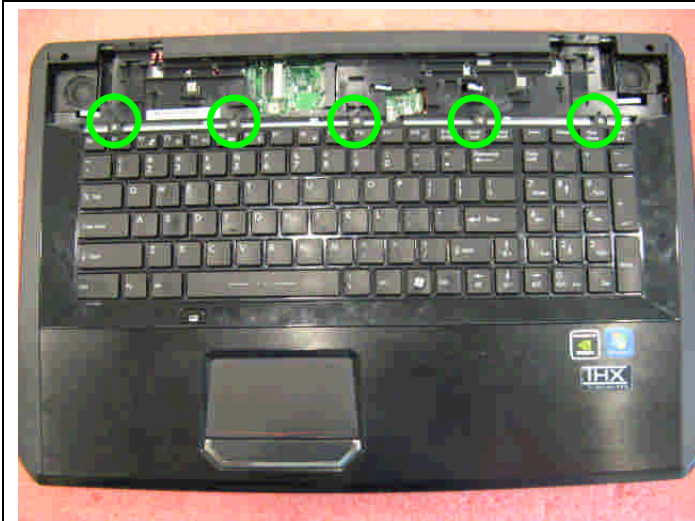
6.6: Remove the 2 screws (M2.5\*7mm) that stabilize the right LCD hinge.

**Attention: the screw driver torque is 3.0-3.5Kgf-cm**

Component	P/N	Qty
Screw	E43-1257002-G68	2

# GT70 (MS-1762) Disassembly Guide

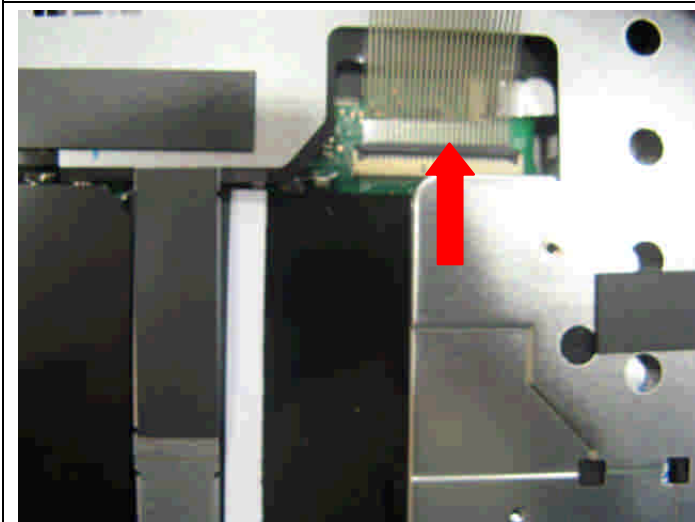
## 6. SEPARATE UPPER CASE AND LOWER CASE



6.7: Remove the 5 screws (M2\*4mm) that stabilize the keyboard. Then remove the Keyboard.

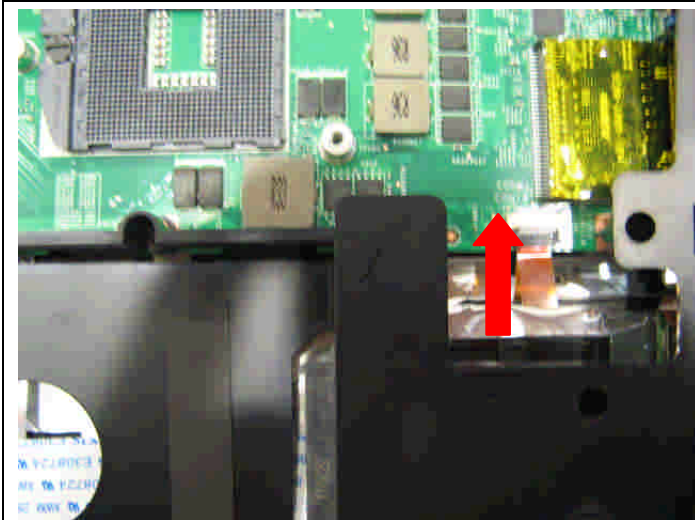
**Attention: the screw driver torque is 1.2-1.6Kgf-cm**

Component	P/N	Qty
Screw	E43-1204002-G68	5



6.8 : Firstly push connector according to the direction as pic shows; then remove the cable.

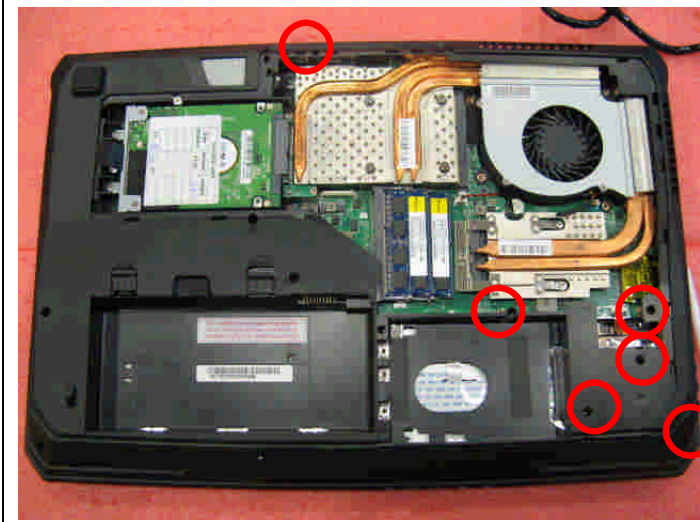
Component	P/N	Qty
Keyboard	S1N-3EUS271-SA0	1



6.9: Remove the small keyboard cable.

# GT70 (MS-1762) Disassembly Guide

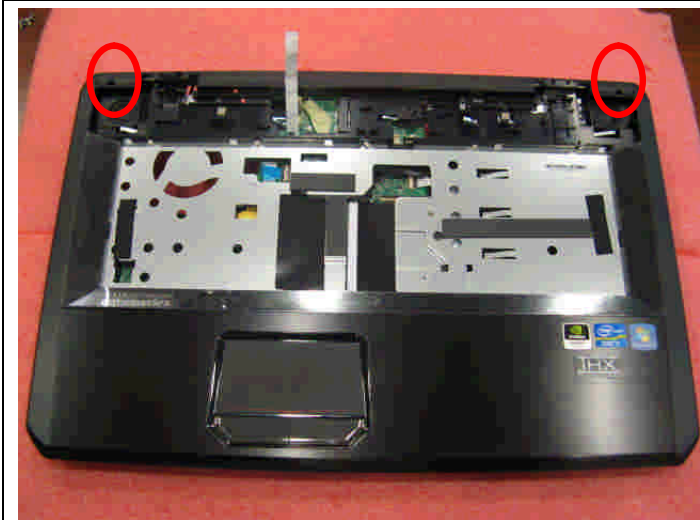
## 6、SEPARATE UPPER CASE AND LOWER CASE



6.10: Remove 6 screws (M2.5\*7mm).

Attention: the screw driver torque is 1.8-2.2Kgf-cm

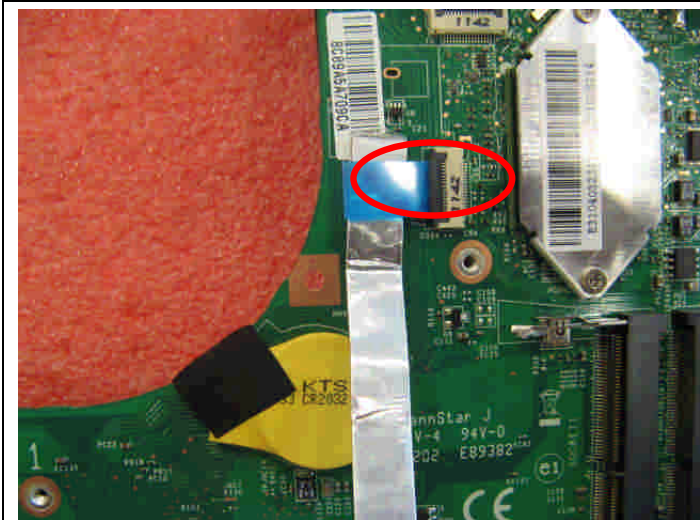
Component	P/N	Qty
Screw	E43-1255002-G68	6



6.11: Remove the 2 screws (M2.5\*7mm) , then remove the upper case.

Attention: the screw driver torque is 1.8-2.2Kgf-cm

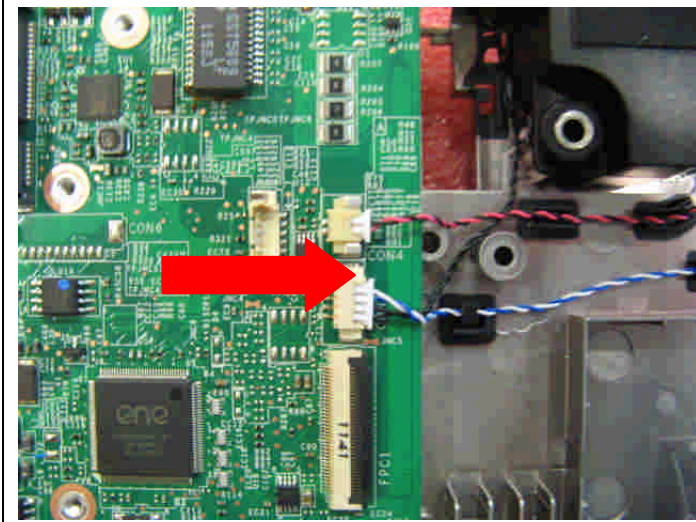
Component	P/N	Qty
Screw	E43-1257002-G68	2



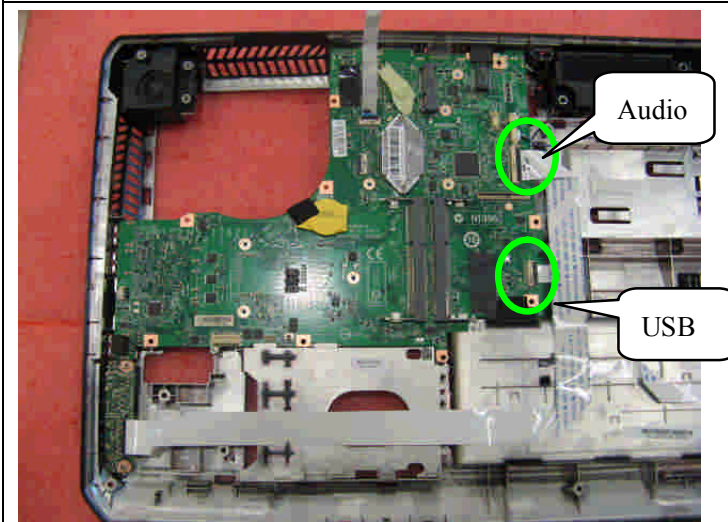
6.12: Remove the Touchpad FFC.

# GT70 (MS-1762) Disassembly Guide

## 7、 LOWER CASE ASSY



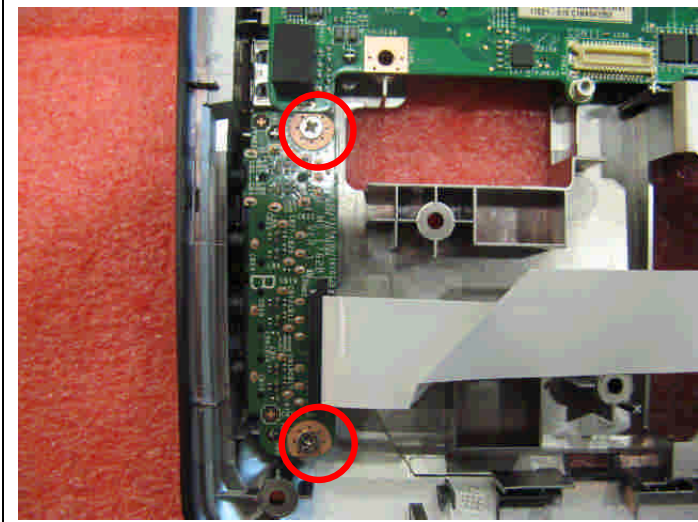
7.1: Remove the Speaker cable.



7.2: Remove the Audio and USB FFC.

# GT70 (MS-1762) Disassembly Guide

## 7、 LOWER CASE ASSY



7.3 : Remove the 2 screws (M2.5\*5mm).then remove the Audio board.

Attention: the screw driver torque is 1.8-2.2Kgf-cm

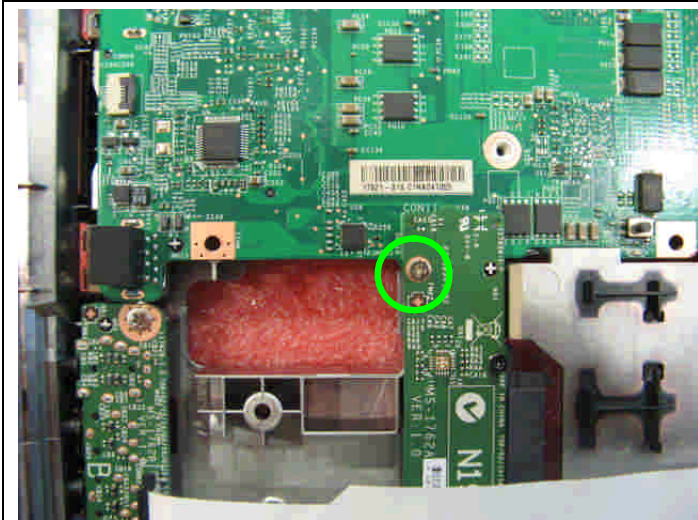
Component	P/N	Qty
screw	E43-1255002-G68	2
Audio board	607-1762B-01S	1



7.4 : Remove the 2screws (M2.5\*5mm).then remove the USB board.

Attention: the screw driver torque is 1.8-2.2Kgf-cm

Component	P/N	Qty
Screw	E43-1255002-G68	2
USB board	607-1762E-01S	1



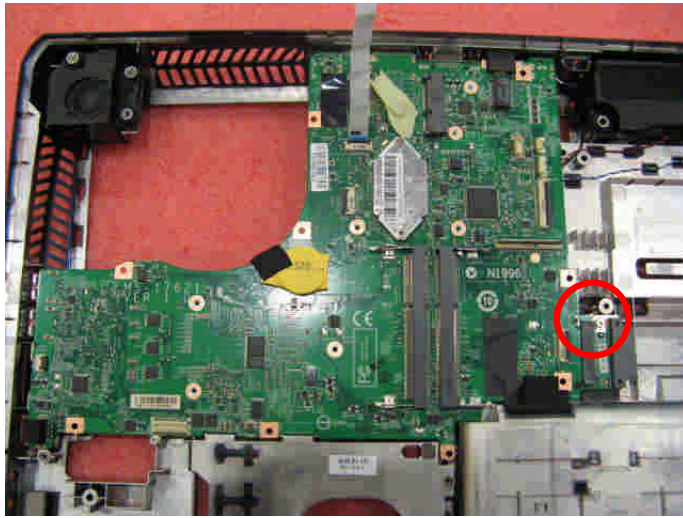
7.5: Remove the 1screw (M2\*4mm).then remove the HDD1 board.

Attention: the screw driver torque is 1.2-1.6Kgf-cm

Component	P/N	Qty
Screw	E43-1204002-G68	1
HDD1 board	607-1762C-01S	1

# GT70 (MS-1762) Disassembly Guide

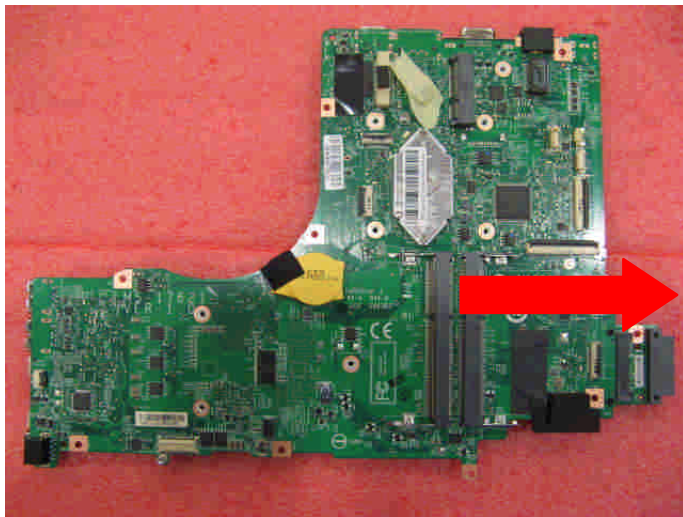
## 7、 LOWER CASE ASSY



7.6 : : Remove the 1screw (M2.5\*5mm).then remove the main board from Lower case.

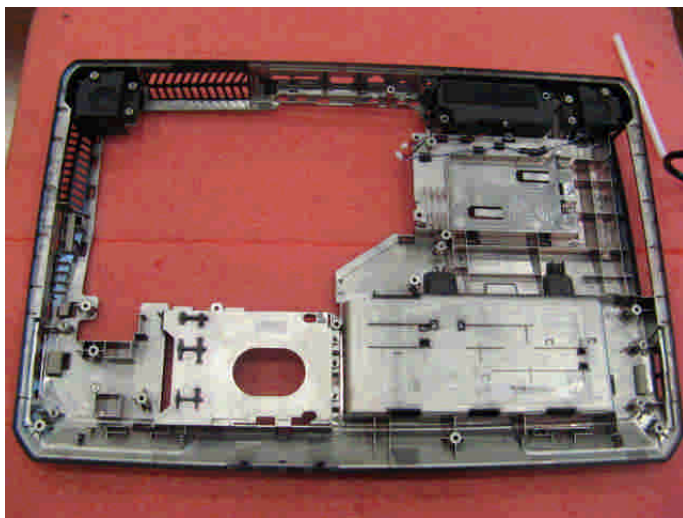
**Attention: the screw driver torque is 1.8-2.2Kgf-cm**

Component	P/N	Qty
Screw	E43-1255002-G68	1
Main Board	607-17621-01S	1



7.7: Remove the ODD board.

Component	P/N	Qty
ODD board	607-1762F-01S	1

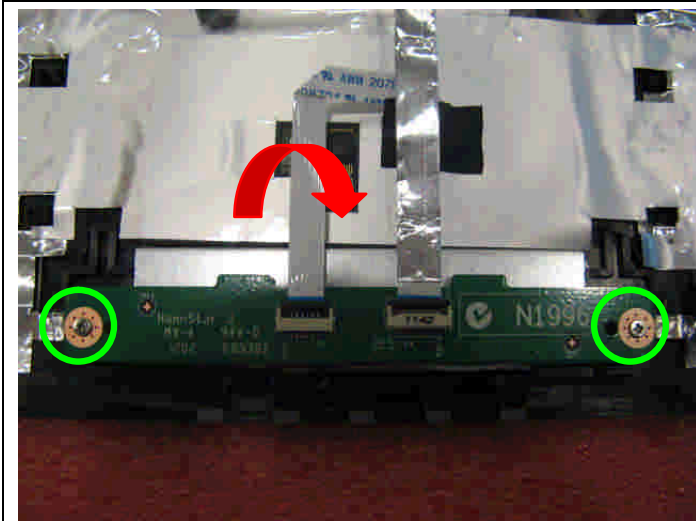


7.8: Remove the Speaker and woofer module from lower case.

Component	P/N	Qty
Woofer	S33-S030110-F33	1
Speaker Module	S33-A020230-F33	1
Lower Case	307-761D216-Y31	1

# GT70 (MS-1762) Disassembly Guide

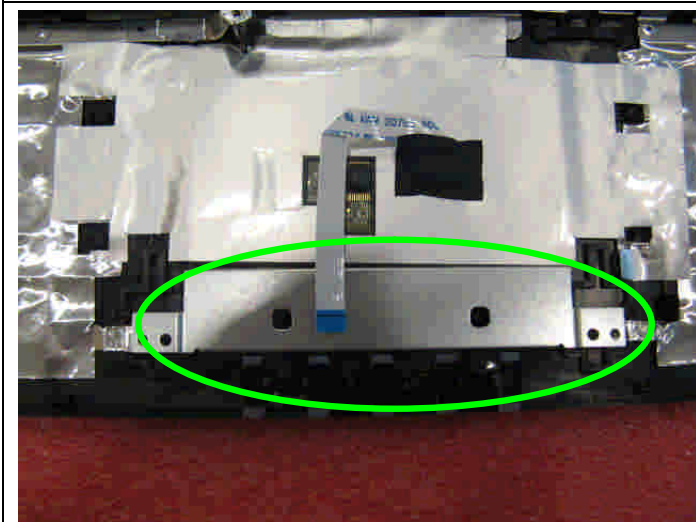
## 8. UPPER CASE ASSY



8.1: Remove 2 screws (M2\*3mm), then remove the T/P board.

Attention: the screw driver torque is 1.2-1.6Kgf-cm

Component	P/N	Qty
screw	E43-1204002-G68	2
Touchpad board	607-1762D-01S	1
Upper Case	307-761C215-Y31	1



8.2: : Remove the T/P iron shielding.

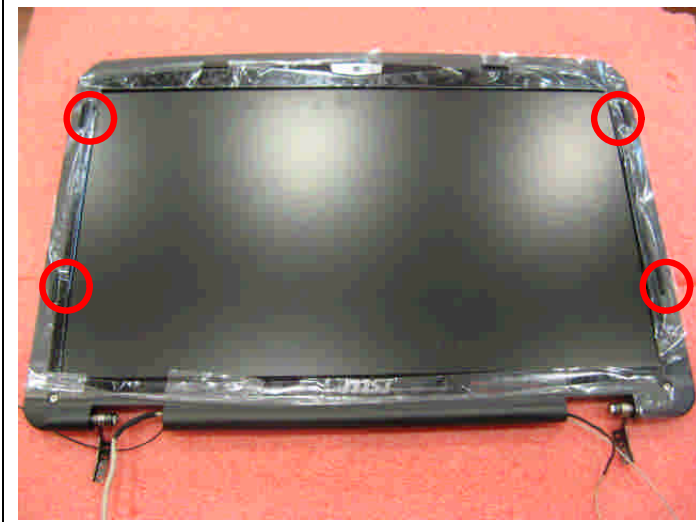


8.3: Release the connector that stabilize the T/P Cable, then remove the T/P module.

Component	P/N	Qty
Touchpad Module	S78-3700680-SD2	1

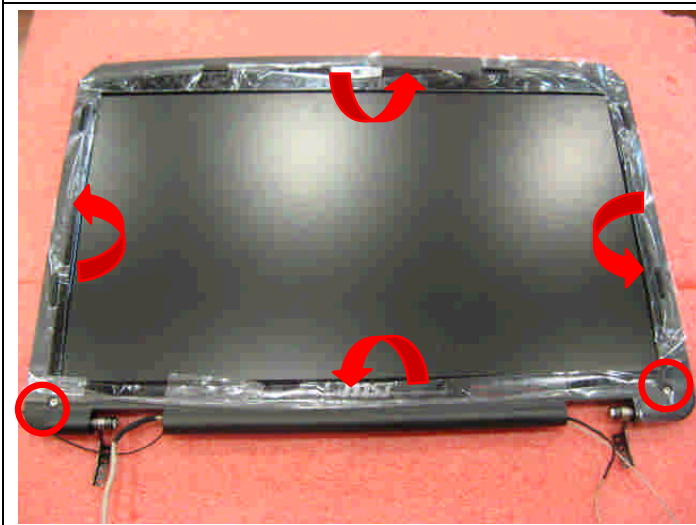
## GT70 (MS-1762) Disassembly Guide

### 9、 LCD MODULE ASSY



9.1: Remove the 4 cover rubber.

Component	P/N	Qty
Rubber	E2Y-6911711-Y40	4



9.2 Remove the 2 rubbers and 2 screws (M2.5\*5mm), then remove the LCD bezel, should begin from the two sides, then the upside to downside.

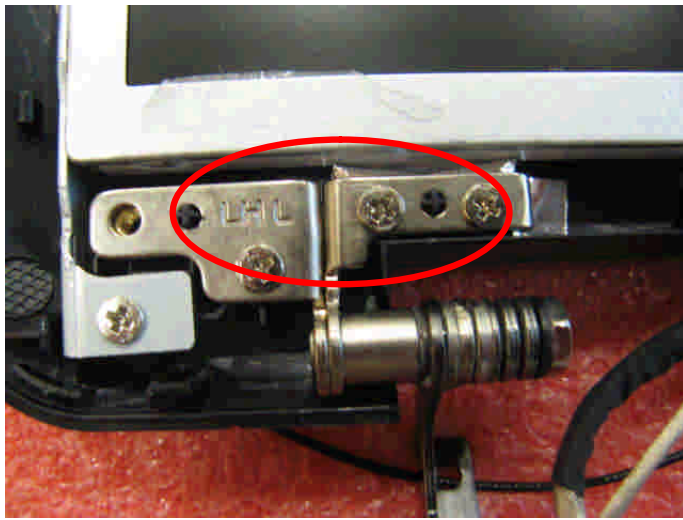
**Attention: the screw driver torque is 1.8-2.2Kgf-cm**

Component	P/N	Qty
Screw	E43-1255002-G68	2
Rubber	E2Y-6320931-Y40	2
LCD Bezel	307-761B215-U22	1



## GT70 (MS-1762) Disassembly Guide

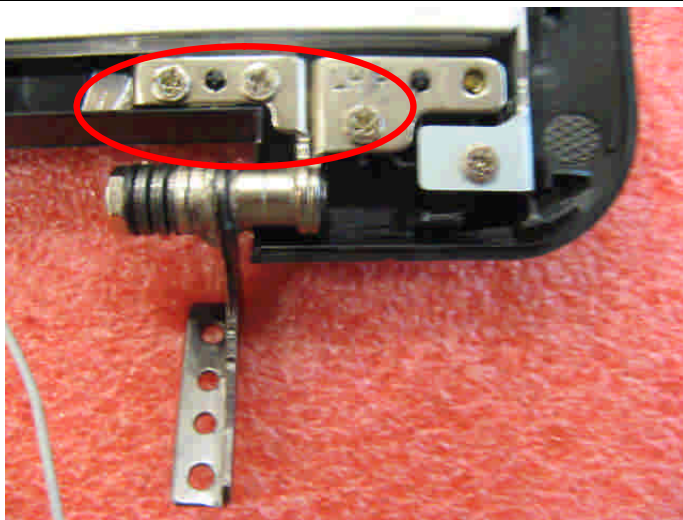
### 9、 LCD MODULE ASSY



9.3 : Remove the 3 screws (M2.5\*5mm) that stabilize the left hinge.

**Attention: the screw driver torque is 3.0-3.5Kgf-cm**

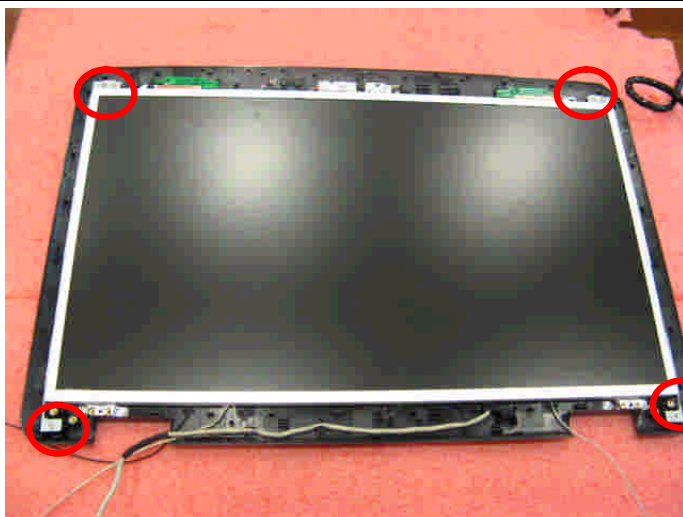
Component	P/N	Qty
screw	E43-1255002-G68	3
Hinge L	E2M-7610512-G60	1



9.4 : Remove the 3 screws (M2.5\*5mm) that stabilize the right hinge.

**Attention: the screw driver torque is 3.0-3.5Kgf-cm**

Component	P/N	Qty
Screw	E43-1255002-G68	3
Hinge R	E2M-7610412-G60	1



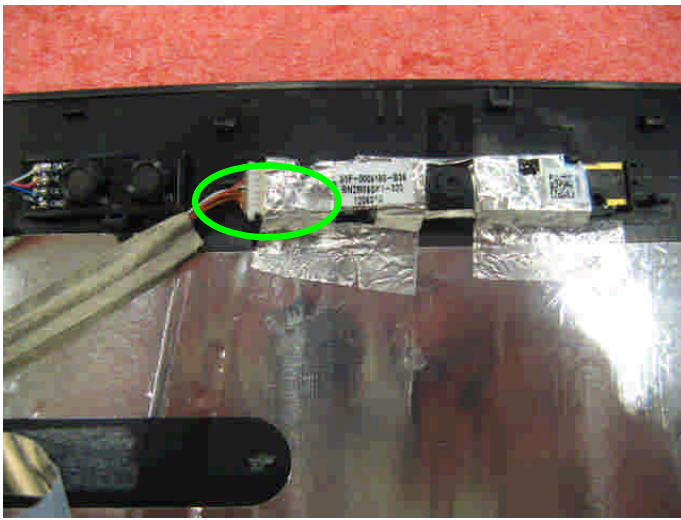
9.5: Remove the 6 screws (M2.5\*5mm).

**Attention: the screw driver torque is 1.8-2.2Kgf-cm**

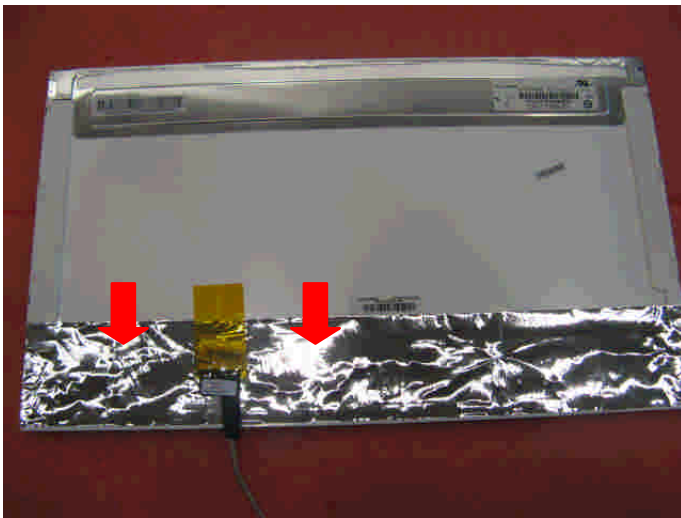
Component	P/N	Qty
screw	E43-1255002-G68	6

## GT70 (MS-1762) Disassembly Guide

### 9、 LCD MODULE ASSY



9.6 Remove the camera cable, and then remove the display module from LCD cover.



9.7: Remove the LVDS cable from display module.

Component	P/N	Qty
LVDS Cable	K19-3031003-H39	1

## GT70 (MS-1762) Disassembly Guide

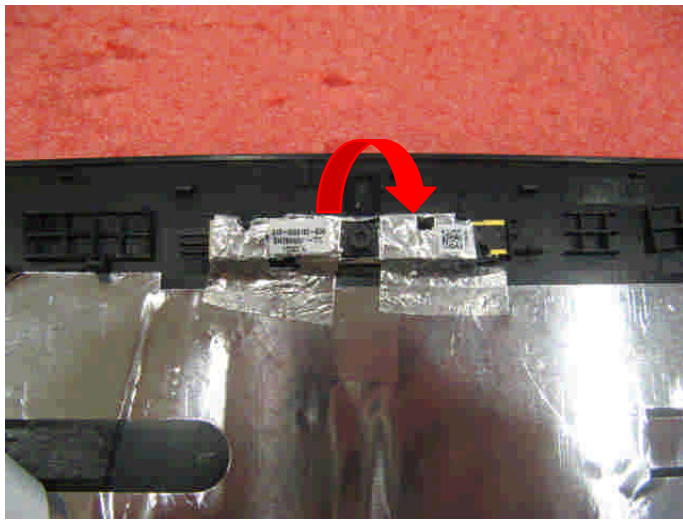
### 9、 LCD MODULE ASSY



9.8: Remove the 6 screws (M2\*3mm).

**Attention: the screw driver torque is 1.2-1.6Kgf-cm**

Component	P/N	Qty
Display Module	S1J-7E0A004-CC1	1
LCD BRACKET-L	E2M-7610311-C22	1
LCD BRACKET-R	E2M-7610211-C22	1
Screw	E43-1203003-G68	6

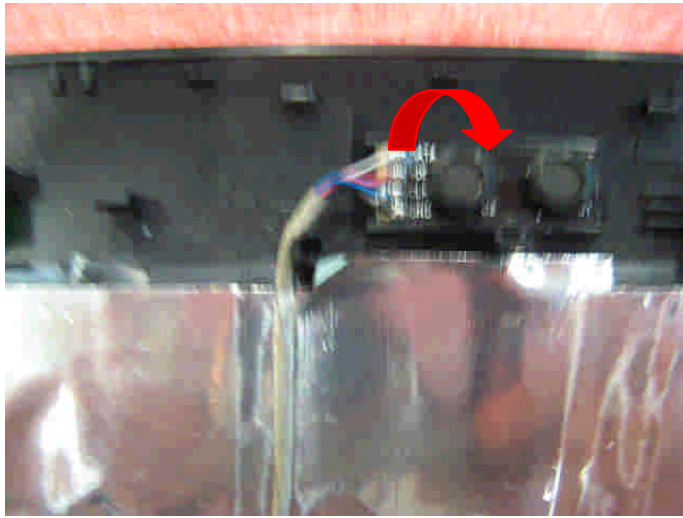


9.9: Remove the CMOS camera module according to the sequence as pic shows.

Component	P/N	Qty
Camera Module	S1F-0005160-B36	1

# GT70 (MS-1762) Disassembly Guide

## 9、 LCD MODULE ASSY



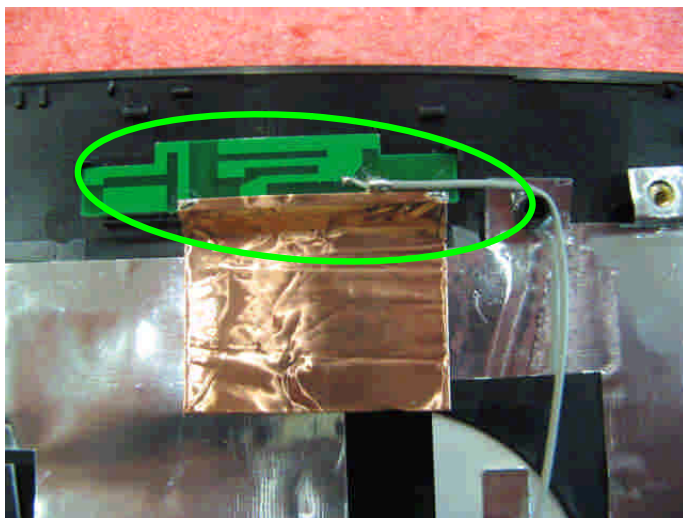
9.10: Remove the MIC Module as left picture show.

Component	P/N	Qty
MIC Module	S34-2101260-N44	1



9.11: Remove the WIRELESS L-Antenna board from LCD Cover.

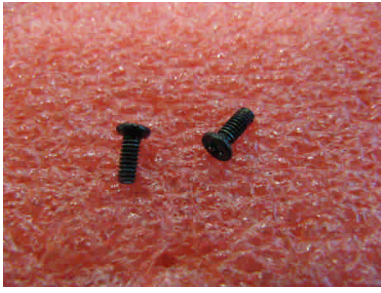
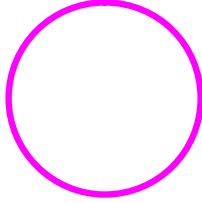

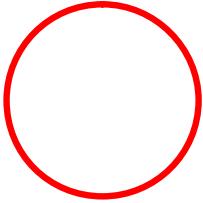
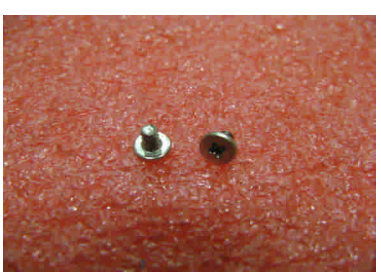
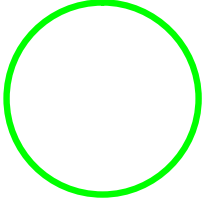
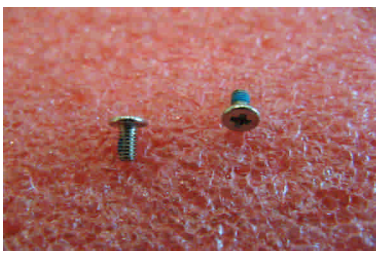
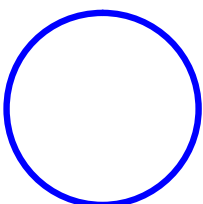
Component	P/N	Qty
L-Antenna	S79-1801240-V03	1



9.12: Remove the WIRELESS R-Antenna board from LCD Cover.

Component	P/N	Qty
R-Antenna	S79-1801250-V03	1
LCD Cover	307-761A214-Y31	1

## GT70((MS-1762) screws specification

Photo	Screw specification	Label
	(M2.5*L7MM)black	
	(M2.5*L5MM)white	
	(M2*L3MM)white	
	(M2*L4MM) white	

## GT70 (MS-1762) screws specification

■ 1、BOTTOM ASSY total 12pcs screws

■ specification:

|

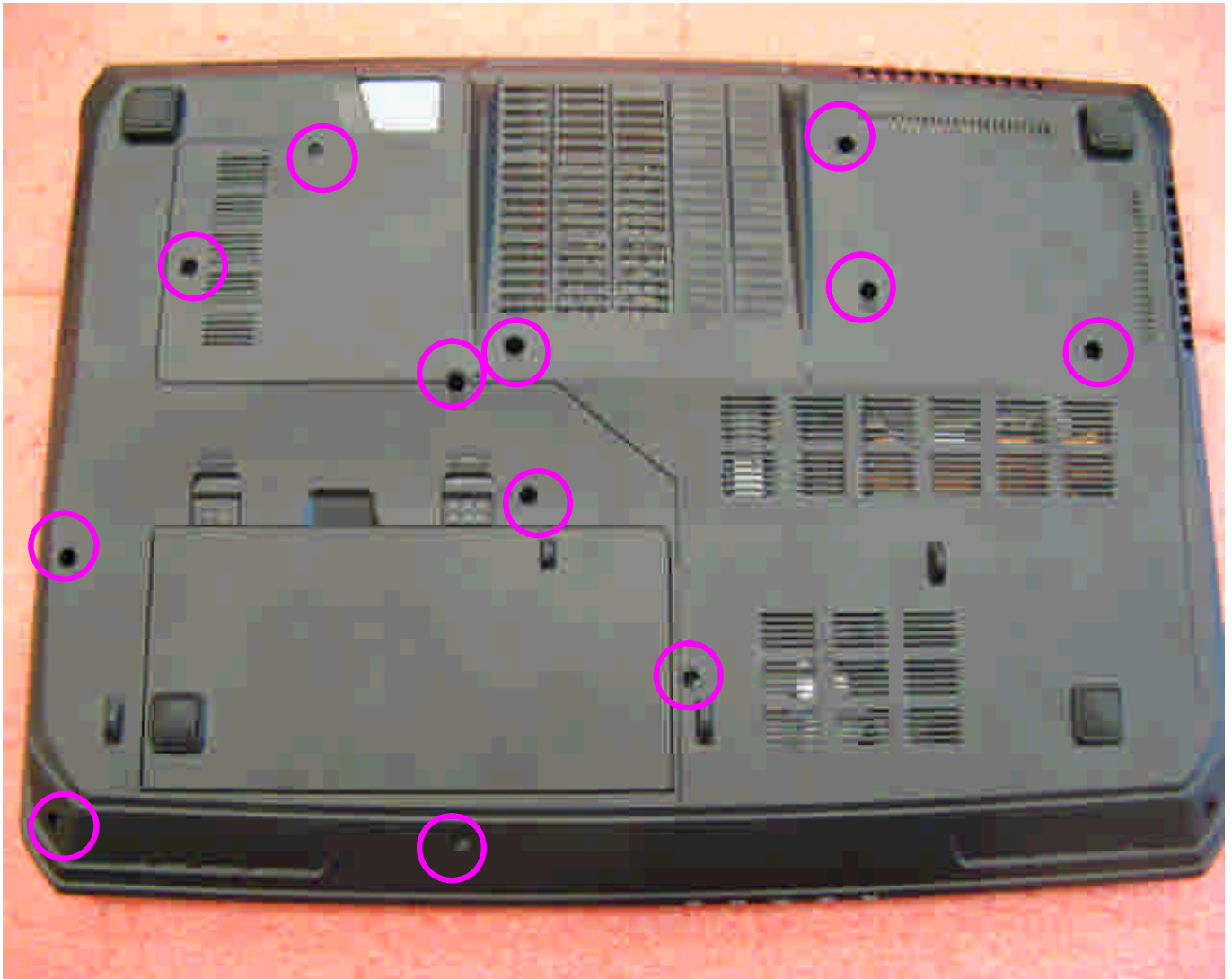

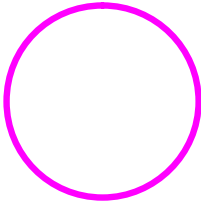


Photo	Screw specification	label
	(M2.5*L7MM) black	

## GT70 (MS-1762) screws specification

■ 2、THERMAL-KIT total 8pcs screws

■ specification:

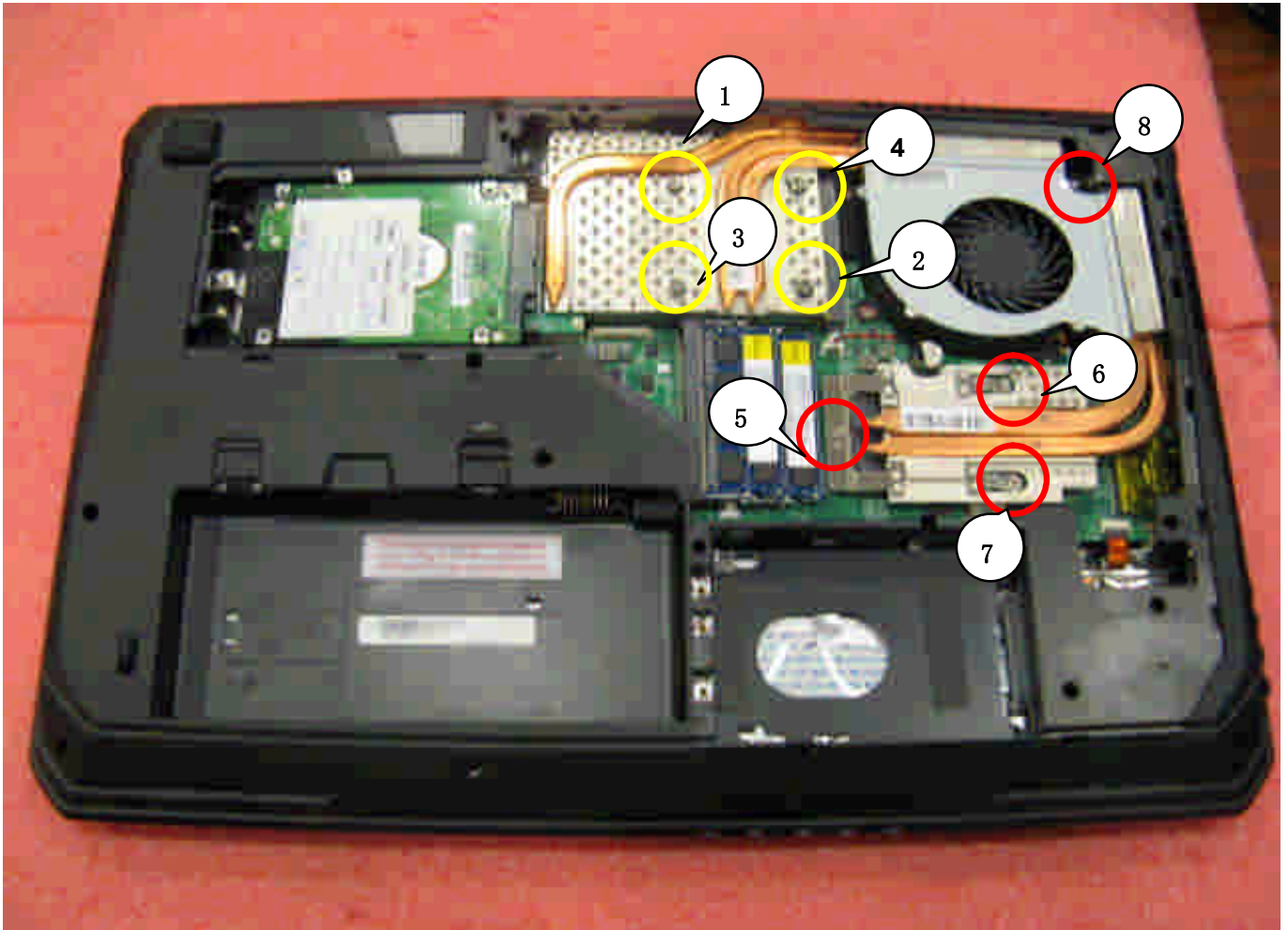

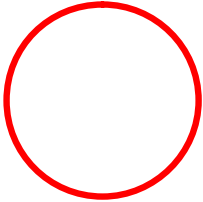


Photo	Screw specification	label
	(M2.5*L5MM) white	

## GT70 (MS-1762) screws specification

■ 3、 WIRELESS CARD and Keyboard total 6pcs screws

■ specification:

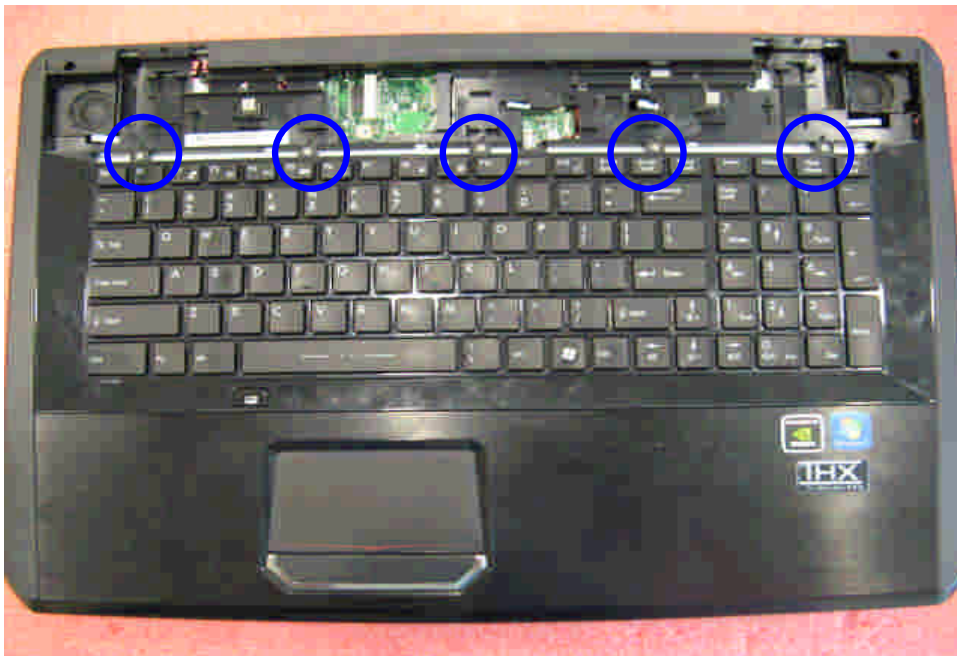
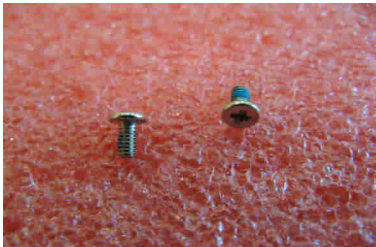
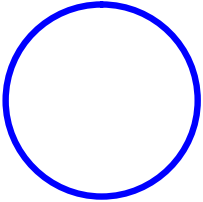
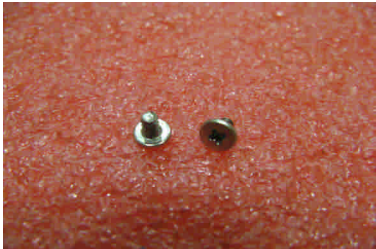
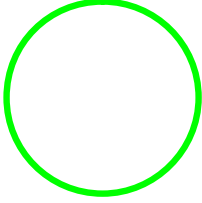


Photo	Screw specification	label
	(M2*L4MM) white	
	(M2*L3MM)white	



## GT70 (MS-1762) screws specification

■ 4、UPCASE ASSY total 4pcs screws

■ specification:

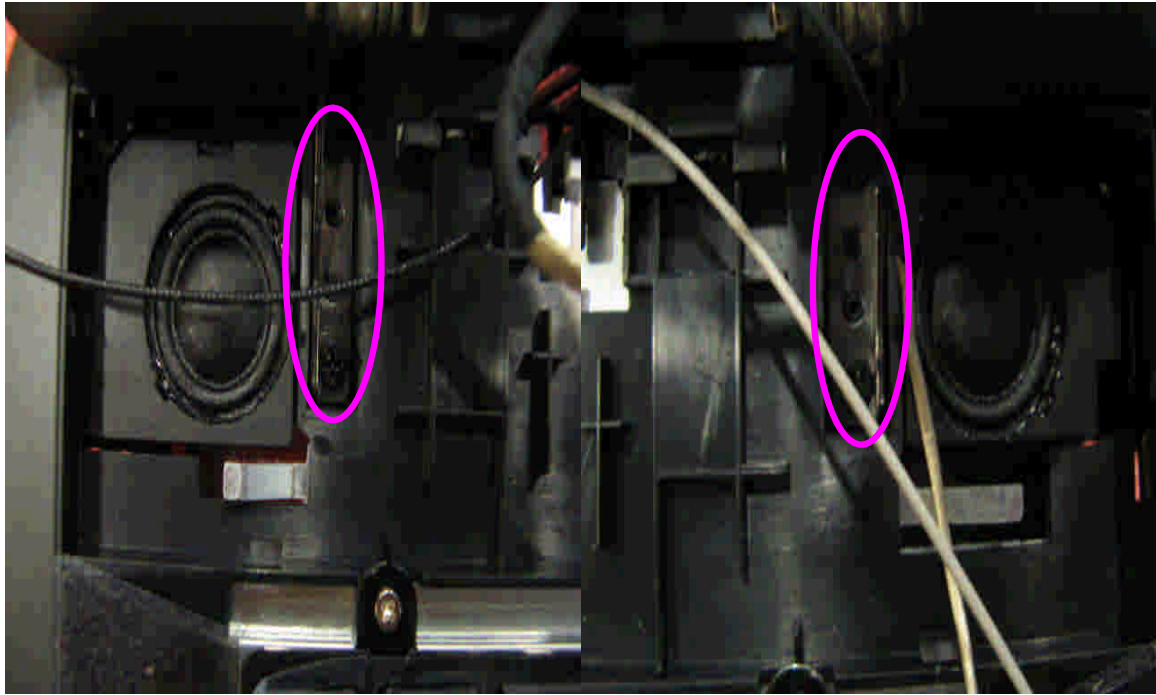

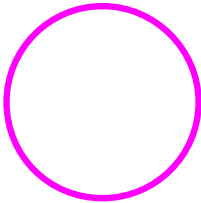



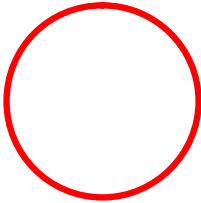
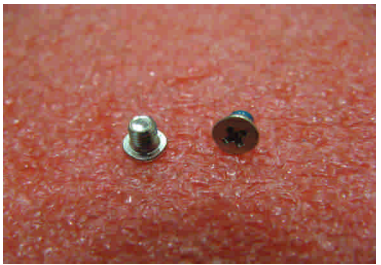
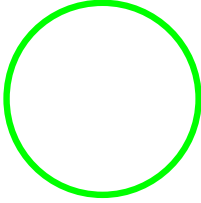
Photo	Screw specification	Label
	(M2.5*L7MM) black	

## GT70 (MS-1762) screws specification

■ 5、LCD MODULE ASSY total 12pcs screws

■ specification:



Photo	Screw specification	label
	(M2.5*L5MM) white	
	(M2*L3MM)white	

## GT70 (MS-1762) screws specification

- 6、Audio and USB board total 4pcs screws
- specification:

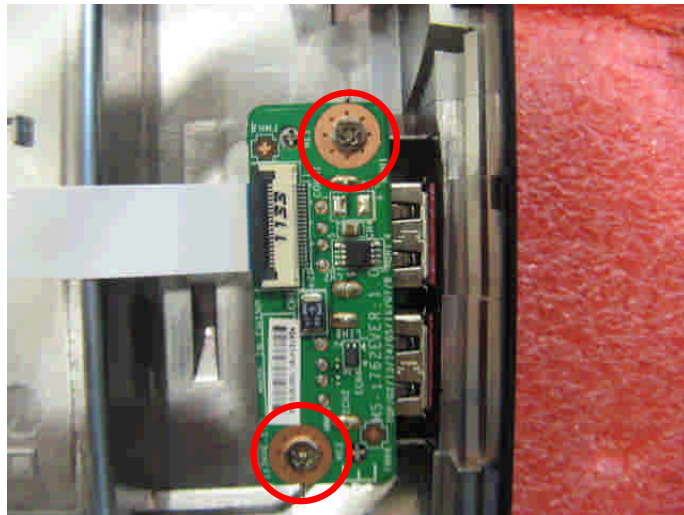
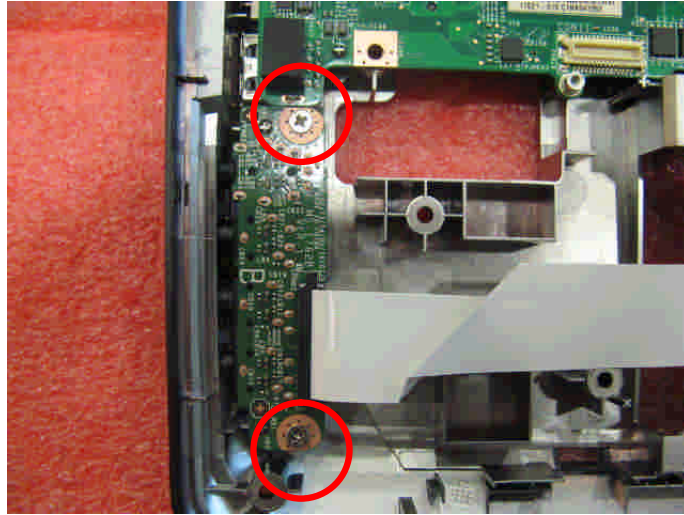



Photo	Screw specification	label
	(M2.5*L5MM) white	