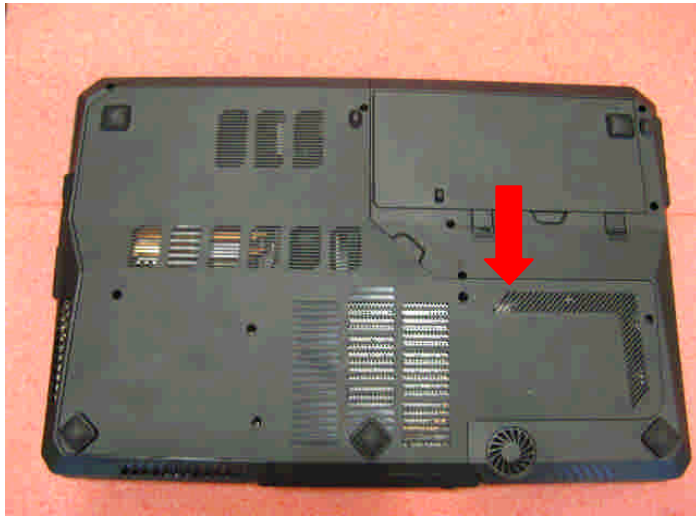


GT60 (MS-16F3) Disassembly Guide

- 1、 BATTERY PACK
- 2、 BOTTOM DOOR ASSY
- 3、 HDD MODULE
- 4、 THERMAL-KIT、 CPU AND DRAM
- 5、 ODD MODULE
- 6、 SEPARATE UPPER CASE AND LOWER CASE
- 7、 LOWER CASE ASSY
- 8、 UPPER CASE ASSY
- 9、 LCD MODULE ASSY

GT60 (MS-16F3) Disassembly Guide

1、 BATTERY PACK



1.1: Move the "Unlock" button base on left picture shows.



1.2: Release the "Release" button and move the battery pack base on left picture.

Component	P/N	Qty
Battery Pack	S9N-3496200-M47	1

GT60 (MS-16F3) Disassembly Guide

2、BOTTOM DOOR ASSY



2.1: Remove the 5 screws (M2.5*5mm).

Attention: the screw driver torque is: 2.5-3.0 gf-cm

Component	P/N	Qty
Screw	E43-1205003-H29	2



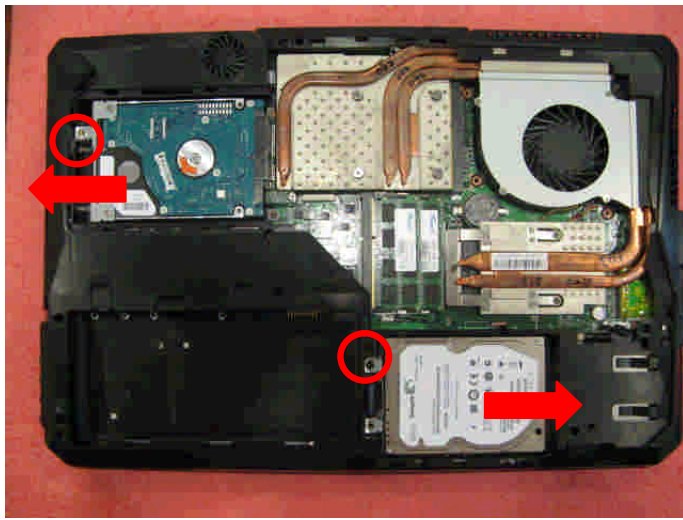
2.2: Remove the 6 screws (M2.5*5mm). Then remove the Bottom door.

Attention: the screw driver torque is: 2.5-3.0 gf-cm

Component	P/N	Qty
Bottom door	307-6F1J215-P89	1
Screw	E43-1205003-H29	6

GT60 (MS-16F3) Disassembly Guide

3、HDD MODULE



3.1: Remove the 2 screws (M2.5*5mm); then remove the two HDD Module according to the direction as pic shows.

Attention: the screw driver torque is 2.5-3.0Kgf-cm

Component	P/N	Qty
Screw	E43-1255001-H29	2



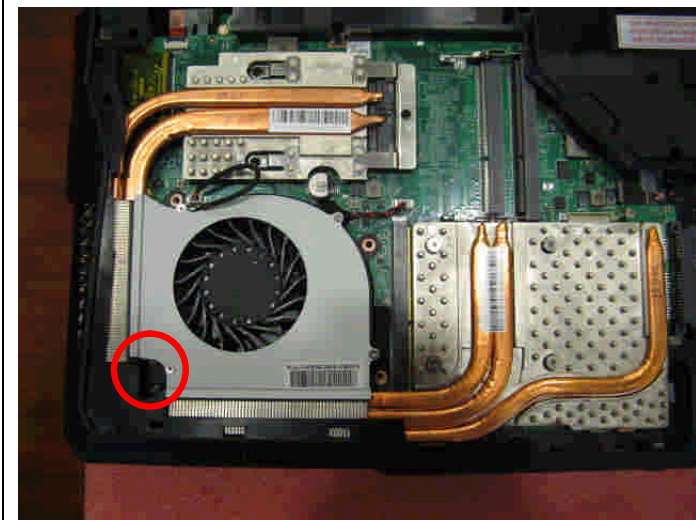
3.2: Remove the 4 screws (M3*4mm) that stabilize the two HDD bracket, then remove the HDD bracket.

Attention: the screw driver torque is 2.5-3.0Kgf-cm

Component	P/N	Qty
Screw	E43-1304009-G68	4
HDD Bracket	307-6F10112-C22	2
HDD Module	S71-2475704-H05	2

GT60 (MS-16F3) Disassembly Guide

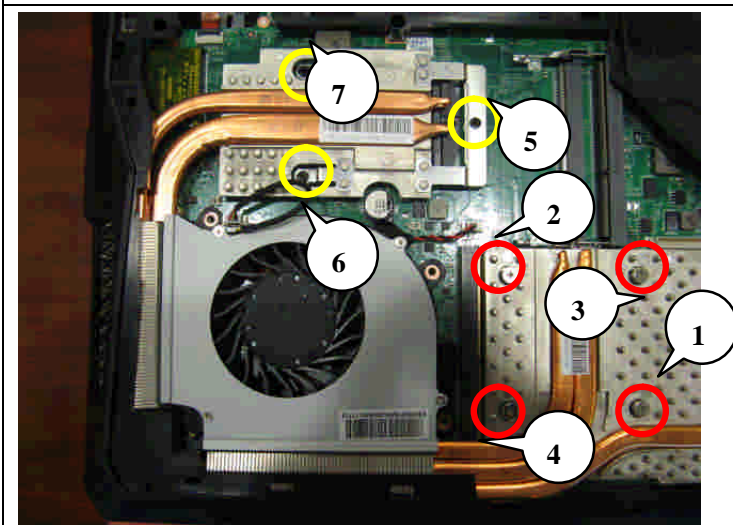
4、 THERMAL-KIT、 CPU AND DRAM



4.1: Remove the 1 screw(M2.5*5mm) and FAN cable, after that remove the Fan.

Attention: the screw driver torque is 2.5-3.0Kgf-cm

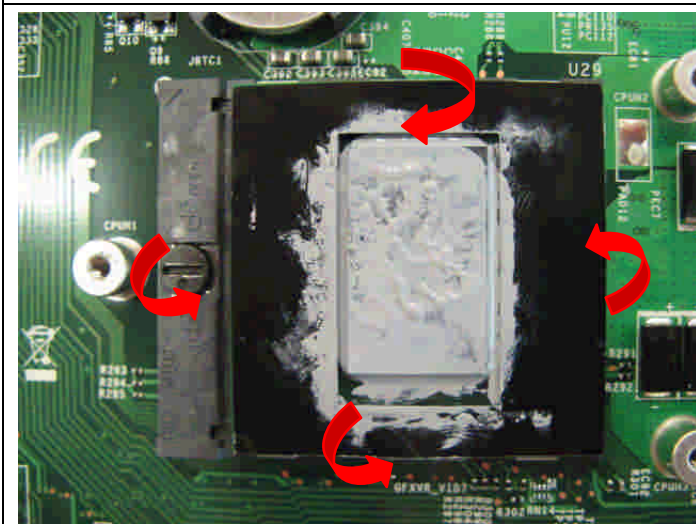
Component	P/N	Qty
Screw	E43-1255001-H29	1
FAN	E33-0800182-MC2	1



4.2: Remove the 3 screws (M2.5*5mm) and 4 spring screws, after that remove the two Heatsink.

Attention: the screw driver torque is 2.5-3.0Kgf-cm

Component	P/N	Qty
Screw	E43-1255001-H29	3
Heatsink	E31-0403231-TA9	1
Heatsink	E31-0900332-TA9	1

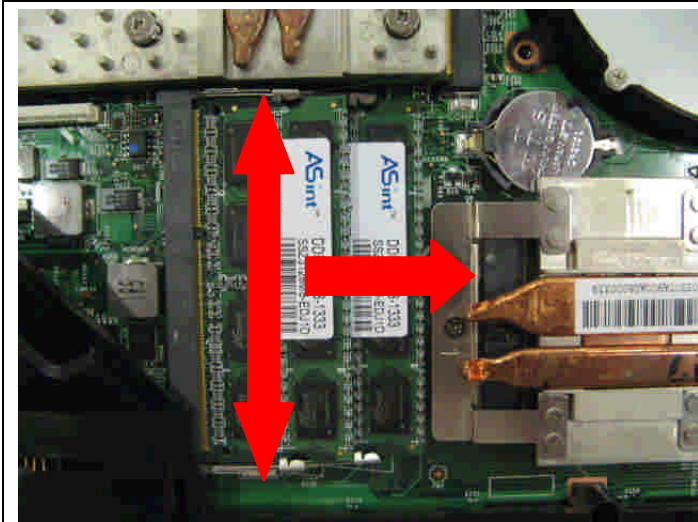


4.3: Open the CPU Slot with Screw Driver, then remove CPU Module as below.

Component	P/N	Qty
CPU	G51-N1CPX2V-I06	1

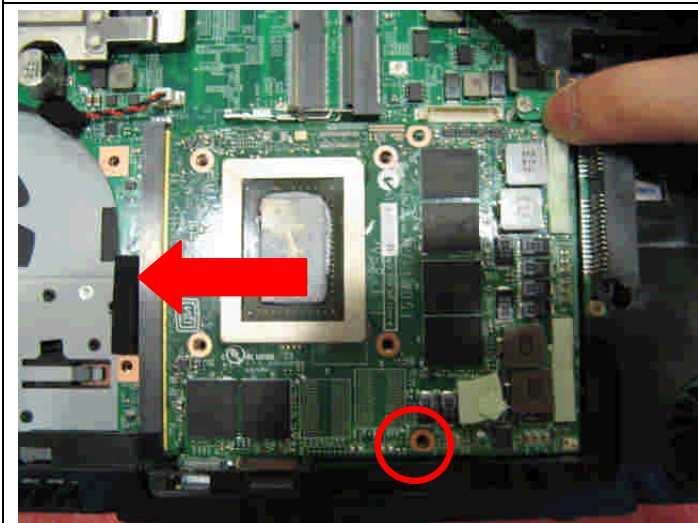
GT60 (MS-16F3) Disassembly Guide

4、 THERMAL-KIT、 CPU AND DRAM



4.4 Push the two side shielding of RAM as pic shows; Then remove the RAM module according the direction as pic shows.

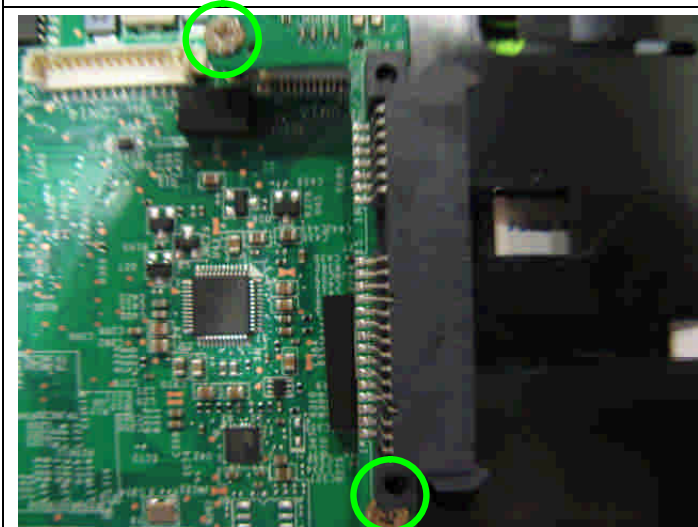
Component	P/N	Qty
RAM Module	S7C-S469H03-E54	2



4.5: Remove 1 screw (M2.5*5mm); then remove the VGA card as pic shows.

Attention: the screw driver torque is: 2.5-3.0Kgf-cm

Component	P/N	Qty
VGA Card	607-1W071-05S	1
Screw	E43-1255001-H29	1



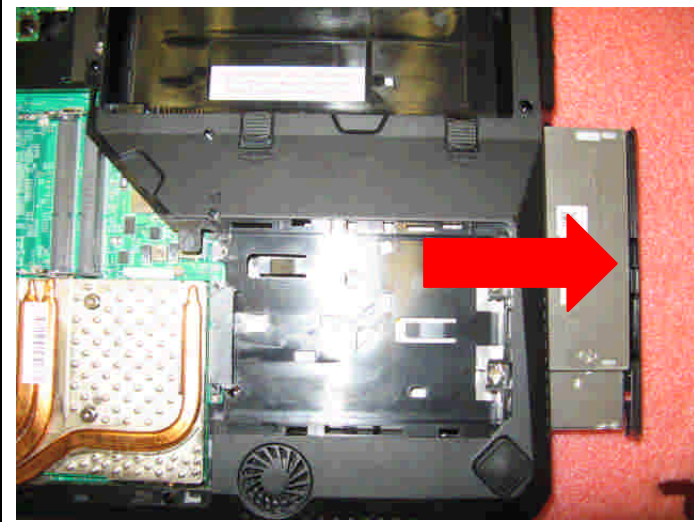
4.6: Remove 2screws (M2*3mm); then remove the HDD connector.

Attention: the screw driver torque is: 1.5-2.0Kgf-cm

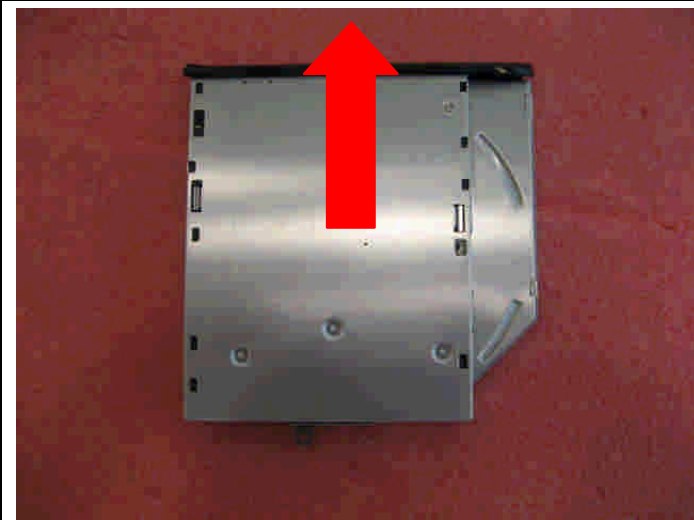
Component	P/N	Qty
HDD connector	607-16F3A-01S	1
Screw	E43-1203003-H29	2

GT60 (MS-16F3) Disassembly Guide

5、 ODD MODULE



5.1: Remove the ODD Module according to the direction as pic shows.



5.2: Remove ODD Bezel as below.

Component	P/N	Qty
ODD Bezel	307-6F1F213-P89	1



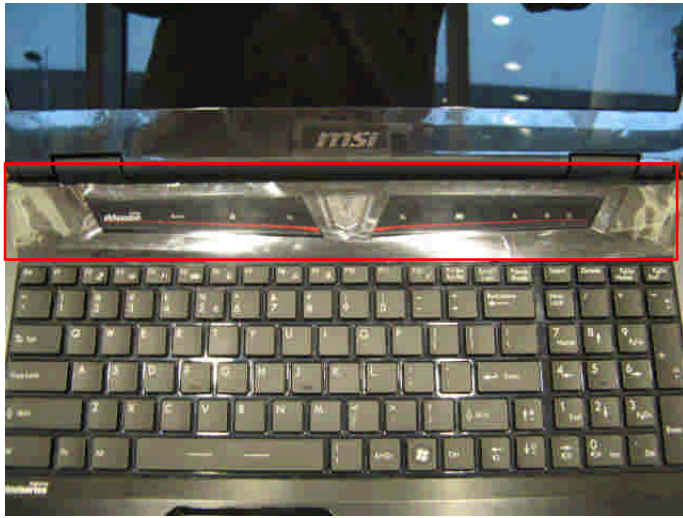
5.3: Remove 2pcs (M2*3mm) Screws; Then remove ODD Bracket as below.

Attention: the screw driver torque is 1.5-2.0Kgf-cm

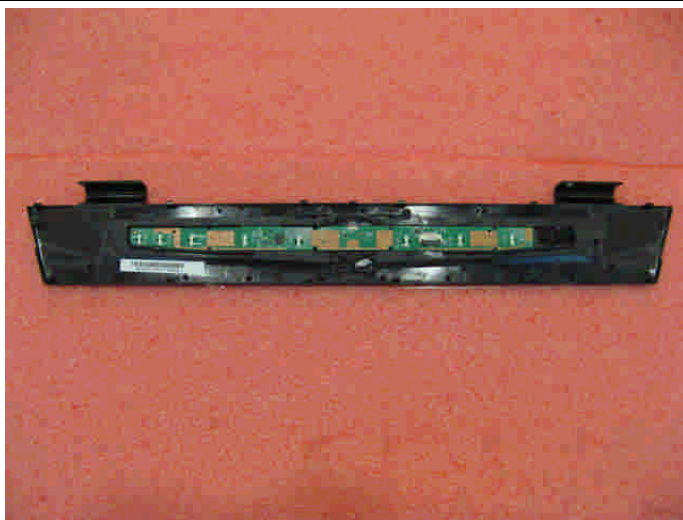
Component	P/N	Qty
Screw	E43-1203003-H29	2
ODD Bracket	E2M-6F10512-C22	1
ODD Module	S7D-2270038-T87	1

GT60 (MS-16F3) Disassembly Guide

6. SEPARATE UPPER CASE AND LOWER CASE



6.1: Before remove K/B, firstly remove the Hinge Cover. Care the Sensor board FPC below the cover.



6.2: Remove the Sensor board.

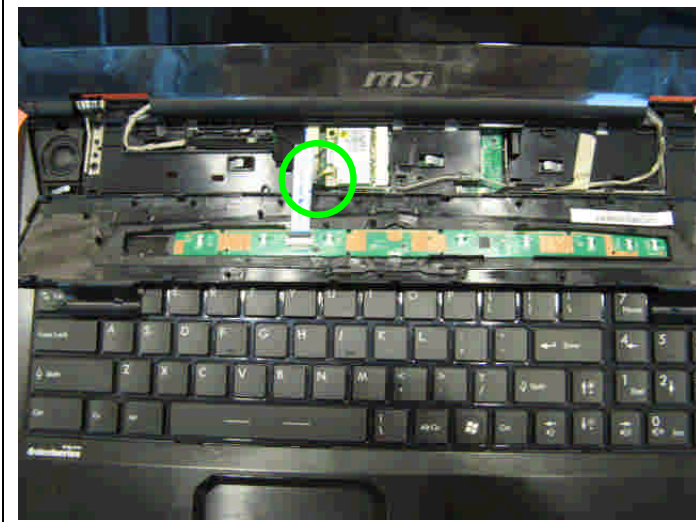
Component	P/N	Qty
Sensor board	607-16F32-01S	1
Hinge Cover	307-6F3E211-Y31	1



6.3: Remove the LVDS and camera cable as pic shows.

GT60 (MS-16F3) Disassembly Guide

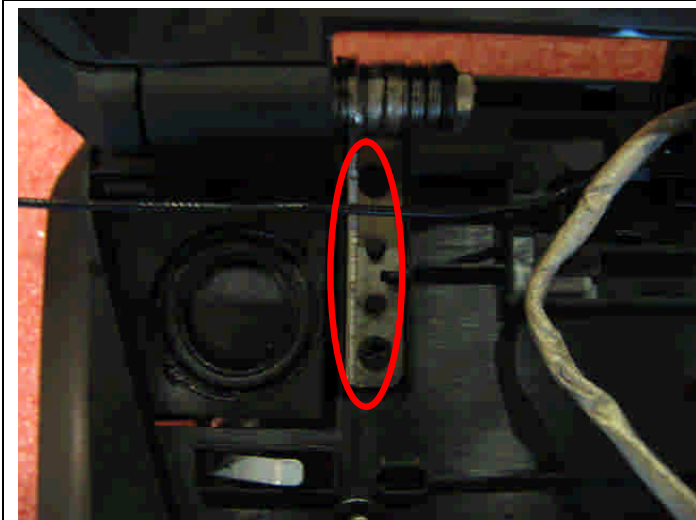
6. SEPARATE UPPER CASE AND LOWER CASE



6.4: Remove 1 screw (M2*3mm); then remove the two side wireless card antenna as pic shows.

Attention: the screw driver torque is: 1.5-2.0Kgf-cm

Component	P/N	Qty
WLAN Module	G51-N1WL069-X06	1
Screw	E43-1203003-H29	1



6.5: Remove the 2 screws (M2.5*7mm) that stabilize the left LCD hinge.

Attention: the screw driver torque is 3.0-3.5Kgf-cm

Component	P/N	Qty
Screw	E43-1257002-G68	2



6.6: Remove the 2 screws (M2.5*7mm) that stabilize the right LCD hinge.

Attention: the screw driver torque is 3.0-3.5Kgf-cm

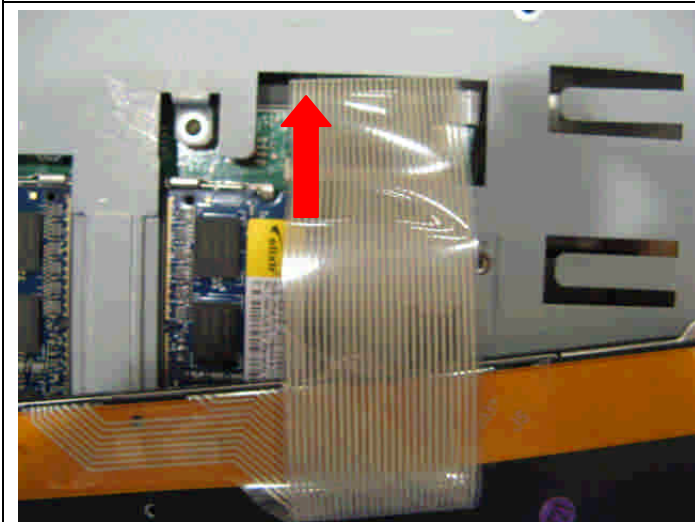
Component	P/N	Qty
Screw	E43-1257002-G68	2

GT60 (MS-16F3) Disassembly Guide

6. SEPARATE UPPER CASE AND LOWER CASE

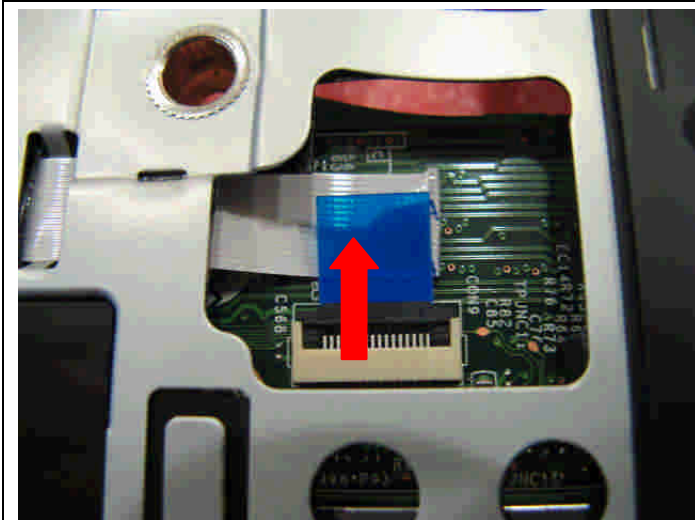


6.7: Remove the Keyboard.



6.8 : Firstly push connector according to the direction as pic shows; then remove the cable.

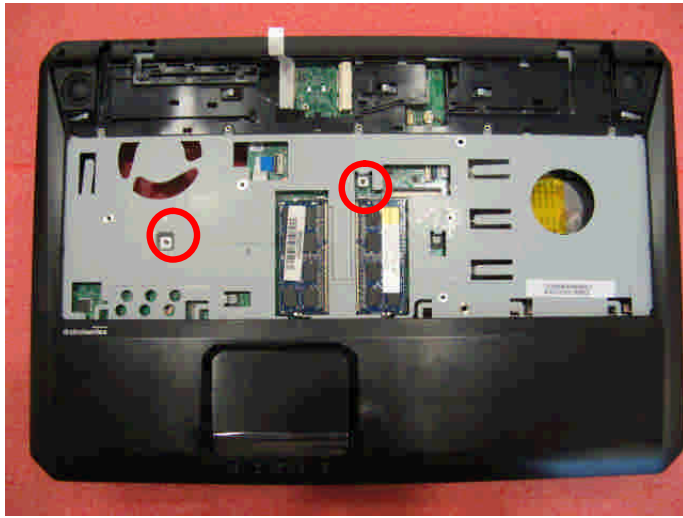
Component	P/N	Qty
Keyboard	S1N-3EUS271-SA0	1



6.9: Remove the Touchpad cable.

GT60 (MS-16F3) Disassembly Guide

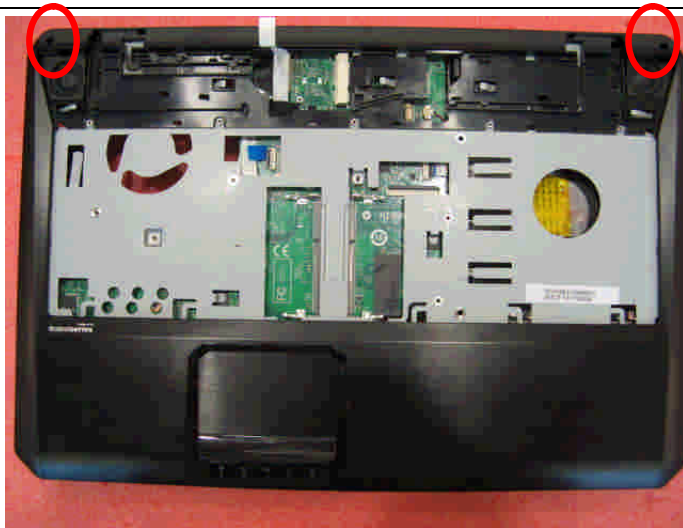
6、SEPARATE UPPER CASE AND LOWER CASE



6.10: Remove 2 screws (M2.5*5mm).

Attention: the screw driver torque is 2.5-3.0Kgf-cm

Component	P/N	Qty
Screw	E43-1255001-H29	8



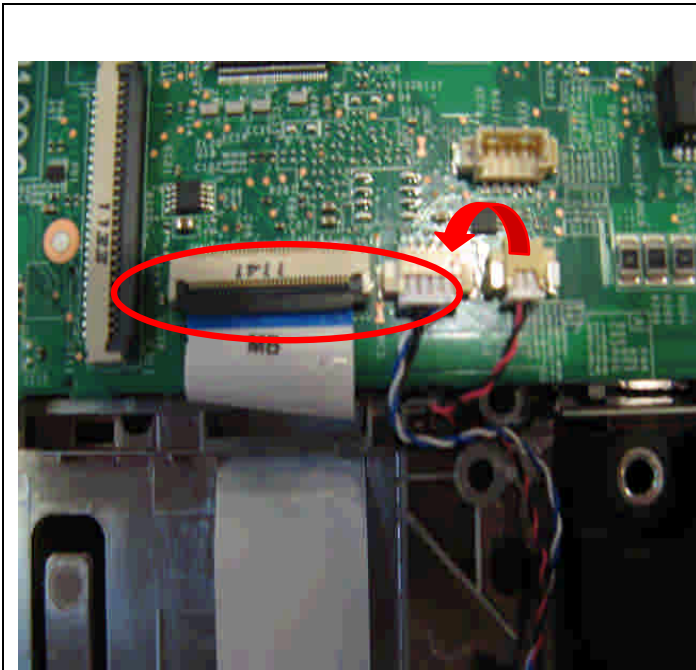
6.11: Remove the 2 screws (M2.5*5mm) , then remove the upper case.

Attention: the screw driver torque is 2.5-3.0Kgf-cm

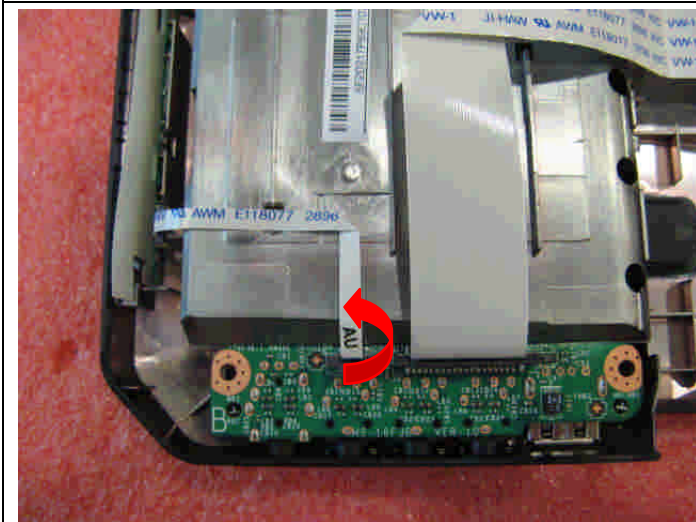
Component	P/N	Qty
Screw	E43-1255001-H29	2

GT60 (MS-16F3) Disassembly Guide

7、 LOWER CASE ASSY



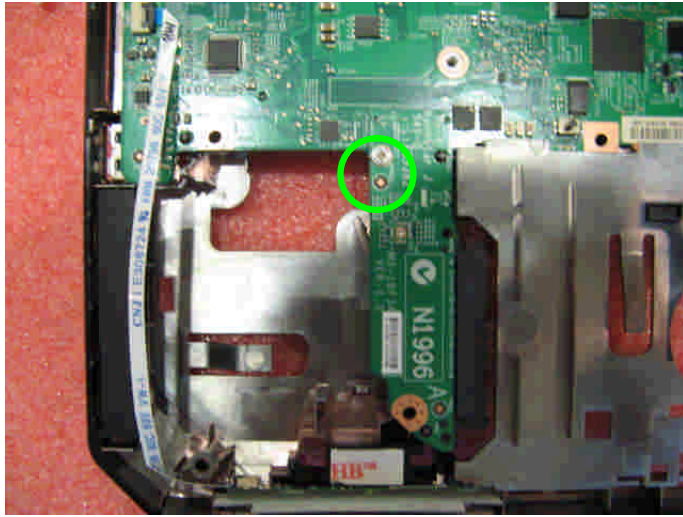
7.1: Remove the FFC and Cable.



7.2: Remove the FFC.

GT60 (MS-16F3) Disassembly Guide

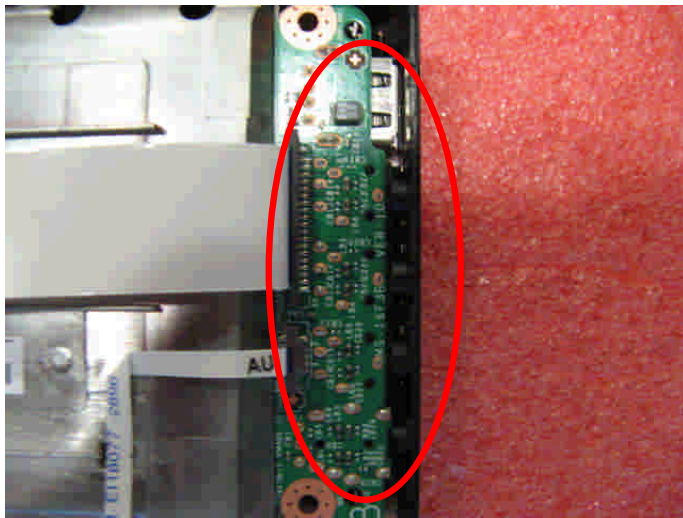
7、LOWER CASE ASSY



7.3: Remove the 1 screws (M2*3mm).then remove the HDD connector board.

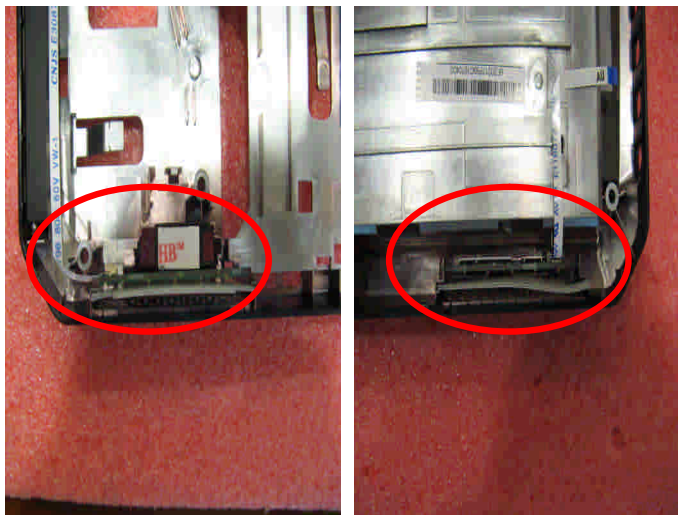
Attention: the screw driver torque is 1.5-2.0Kgf-cm

Component	P/N	Qty
screw	E43-1203003-H29	3
Connector board	607-16F3C-01S	1



7.4: Remove the Audio board.

Component	P/N	Qty
Audio board	607-16F3B-01S	1

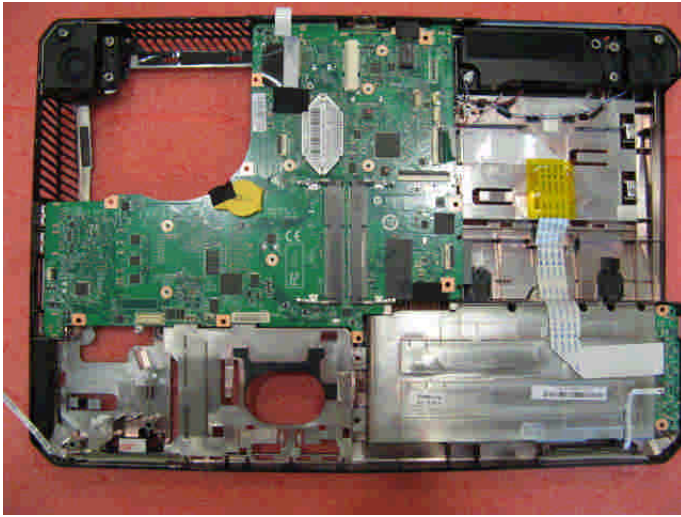


7.5: Remove the LED board.

Component	P/N	Qty
LED_Right&Forward	607-16F3F-01S	1
LED_Left&Forward	607-16F3E-01S	1

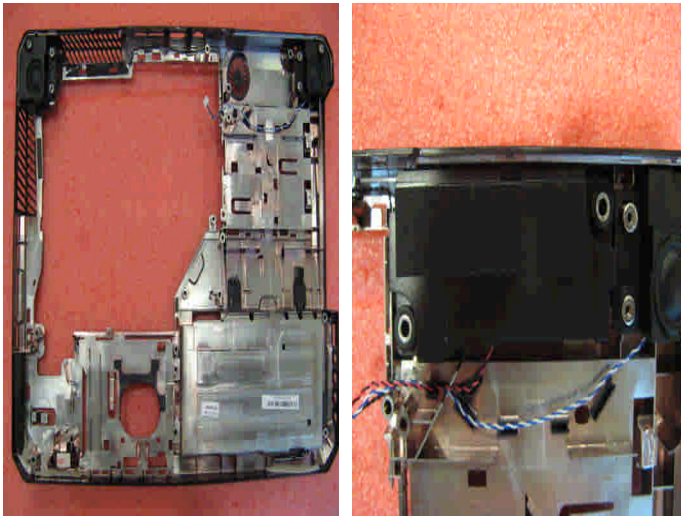
GT60 (MS-16F3) Disassembly Guide

7、 LOWER CASE ASSY



7.6: Remove the main board from Lower case.

Component	P/N	Qty
Main Board	607-16F31-01S	1

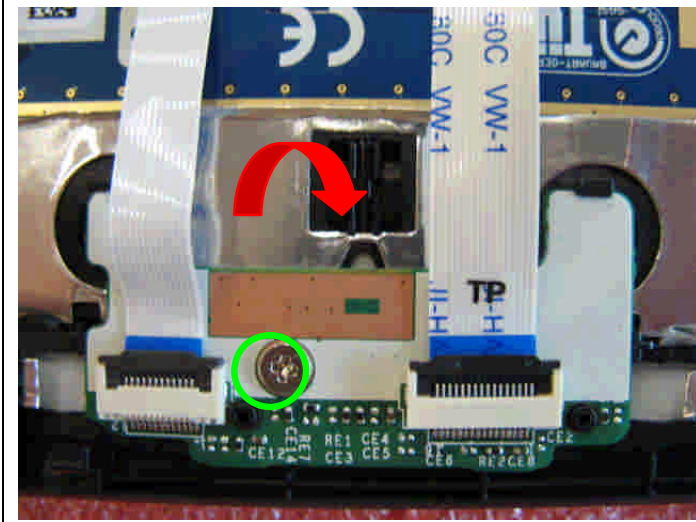


7.7: Remove the Speaker and woofer module from lower case.

Component	P/N	Qty
Woofer	S33-S030111-F33	1
Speaker Module	S33-A020230-F33	1
Lower Case	307-6F2D217-P89	1

GT60 (MS-16F3) Disassembly Guide

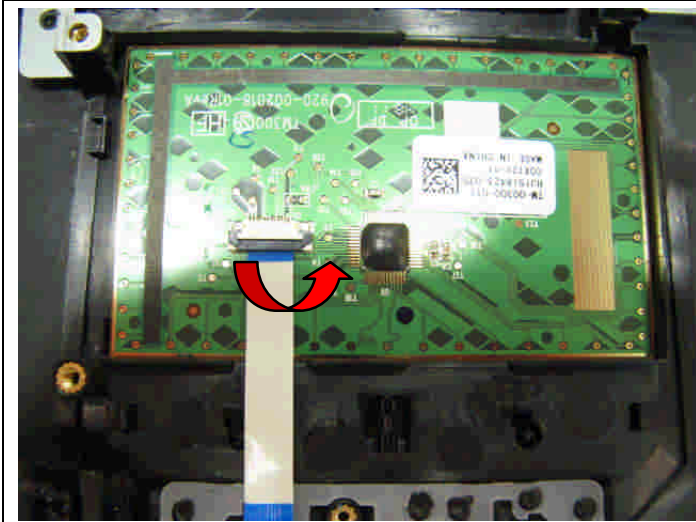
8. UPPER CASE ASSY



8.1: Remove 1 screw (M2*3mm), then remove the T/P board.

Attention: the screw driver torque is 1.5-2.0Kgf-cm

Component	P/N	Qty
screw	E43-1203003-H29	1
Touchpad board	.607-16F3D-01S	1
Upper Case	07-6F3C211-Y31	1



8.2: Release the connector that stabilize the T/P Cable, then remove the T/P module.

Component	P/N	Qty
Touchpad Module	S78-3700650-SD2	1

GT60 (MS-16F3) Disassembly Guide

9、 LCD MODULE ASSY



9.1: Remove the 6 cover rubber.

Component	P/N	Qty
Rubber	E2Y-6F11611-Y40	4



9.2: When removing the LCD bezel, should begin from the two sides, then the upside to downside.

Component	P/N	Qty
LCD Bezel	307-6F2B214-P89	1

GT60 (MS-16F3) Disassembly Guide

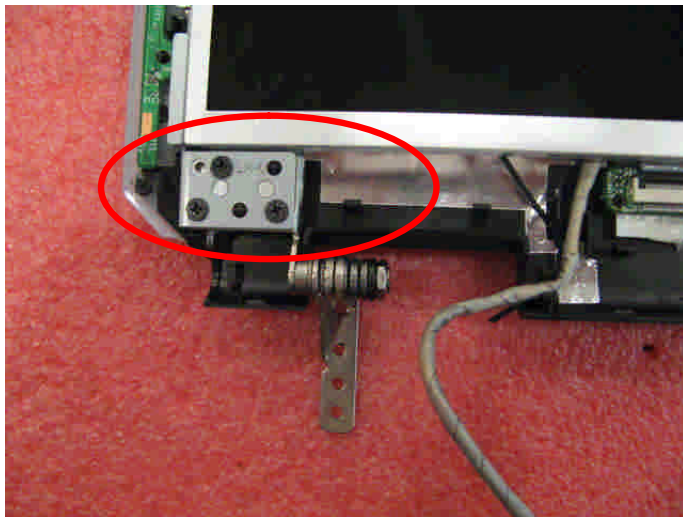
9、 LCD MODULE ASSY



9.3: Remove the 2 screws (M2.5*5mm).

Attention: the screw driver torque is 2.5-3.0Kgf-cm

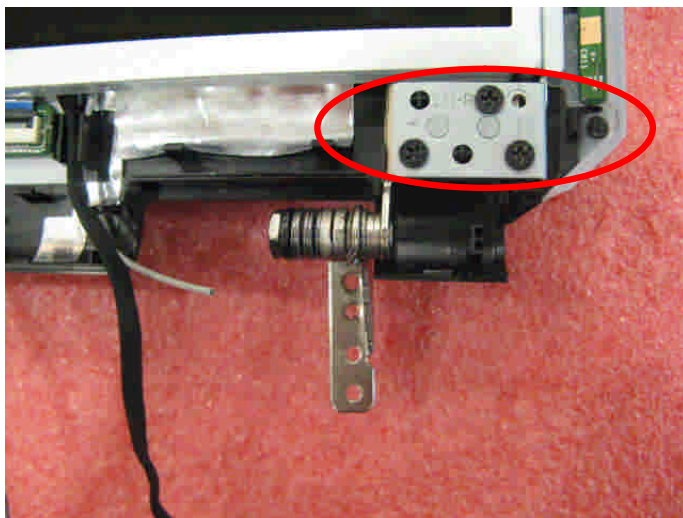
Component	P/N	Qty
screw	E43-1205003-H29	2



9.4 : Remove the 3 screws (M2.5*5mm) that stabilize the left hinge.

Attention: the screw driver torque is 2.5-3.0Kgf-cm

Component	P/N	Qty
screw	E43-1205003-H29	3
Hinge L	E2M-6F20811-G60	1



9.5 : Remove the 3 screws (M2.5*5mm) that stabilize the right hinge.

Attention: the screw driver torque is 2.5-3.0Kgf-cm

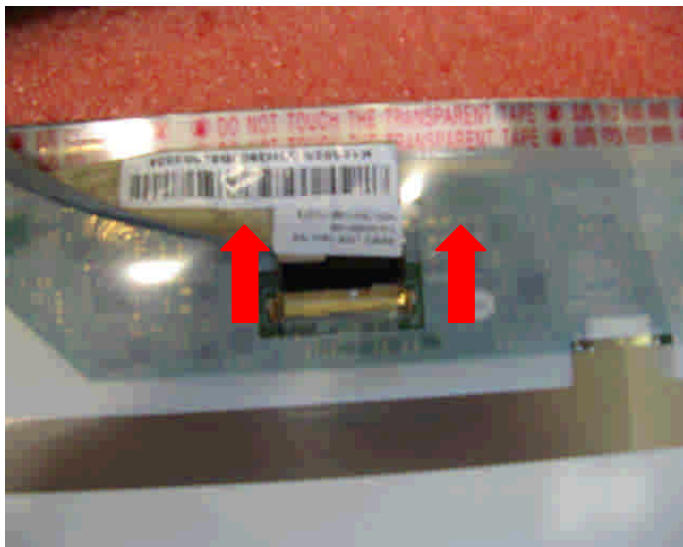
Component	P/N	Qty
Screw	E43-1255001-H29	3
Hinge R	E2M-6F20712-G60	1

GT60 (MS-16F3) Disassembly Guide

9、 LCD MODULE ASSY



9.6: Remove the camera cable, then remove the display module from LCD cover.



9.7: Remove the LVDS cable from display module.

Component	P/N	Qty
LVDS Cable	K19-3031004-V03	1

GT60 (MS-16F3) Disassembly Guide

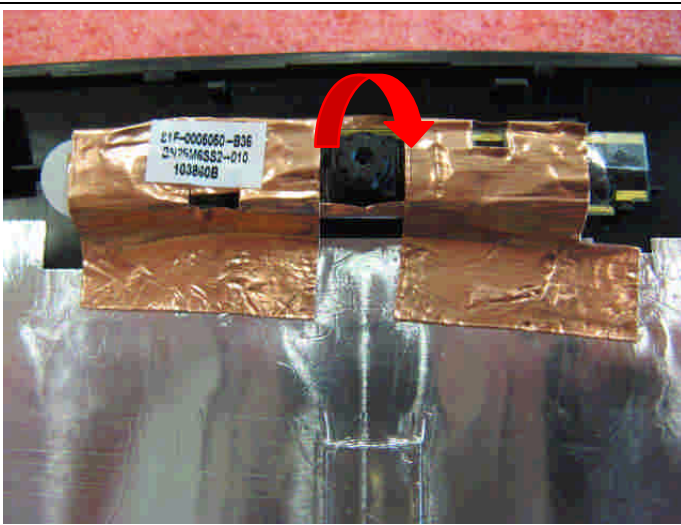
9、 LCD MODULE ASSY



9.8: Remove the 8 screws (M2*3mm)

Attention: the screw driver torque is 1.5-2.0Kgf-cm

Component	P/N	Qty
Display Module	S1J-6E0A002-L47	1
LCD BRACKET-L	E2M-6F20811-G60	1
LCD BRACKET-R	E2M-6F20712-G60	1
Screw	E43-1203003-H29	8

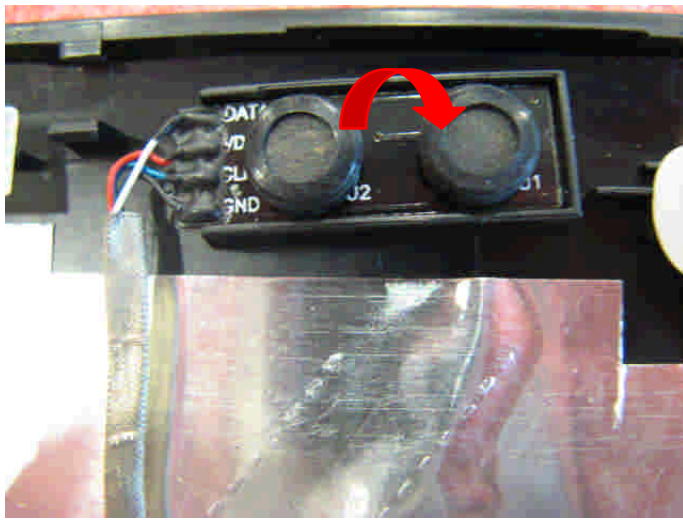


9.9: Remove the CMOS camera module according to the sequence as pic shows.

Component	P/N	Qty
Camera Module	S1F-0005160-B36	1

GT60 (MS-16F3) Disassembly Guide

9、 LCD MODULE ASSY



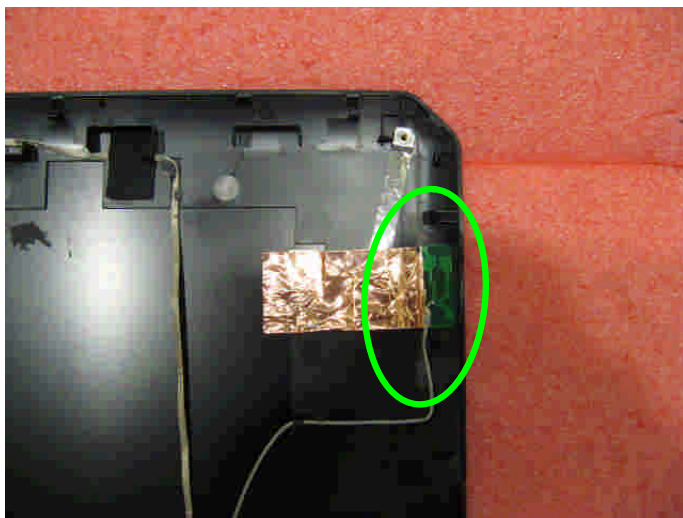
9.10: Remove the MIC Module as left picture show.

Component	P/N	Qty
MIC Module	S34-2101230-N44	1



9.11: Remove the WIRELESS L-Antenna board from LCD Cover.


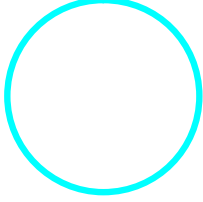

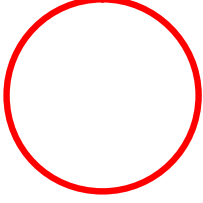
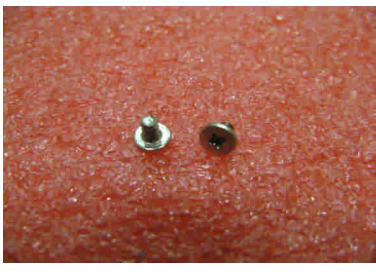
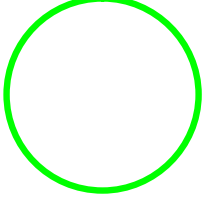

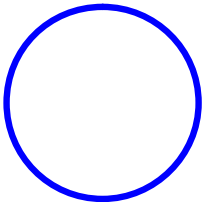
Component	P/N	Qty
L-Antenna	S79-1801790-V03	1



9.12: Remove the WIRELESS R-Antenna board from LCD Cover.

Component	P/N	Qty
R-Antenna	S79-1801780-V03	1
LCD Cover	307-6F3A211-Y31	1

GT60 (MS-16F3) screws specification

Photo	Screw specification	Label
	(M2.5*L7MM)black	
	(M2.5*L5MM)black	
	(M2*L3MM)white	
	(M3*L4MM) white	

GT60 (MS-16F3) screws specification

- 1、BOTTOM ASSY total 11pcs screws
- specification:

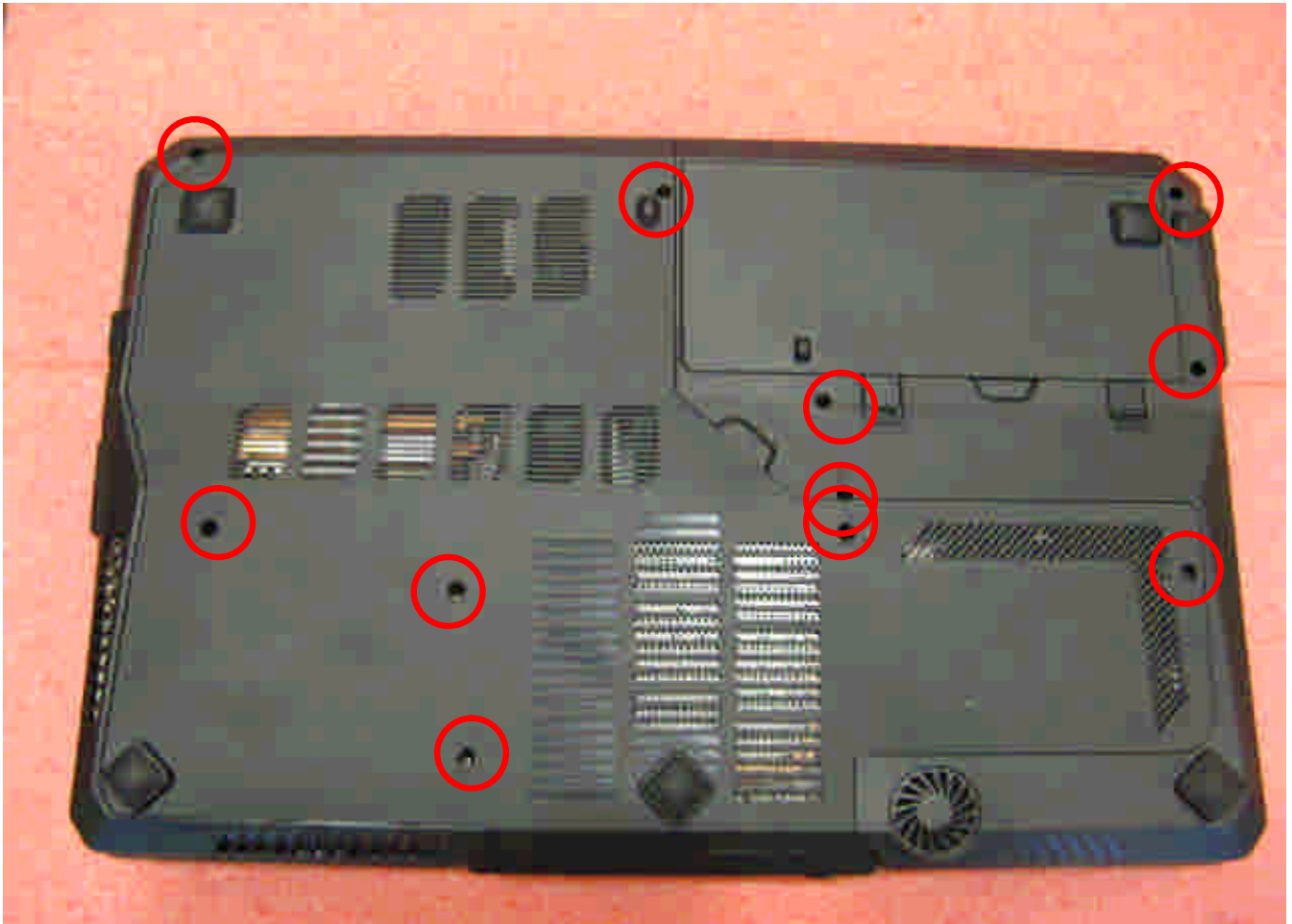

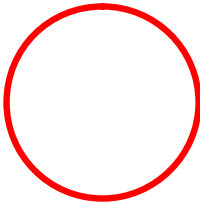


Photo	Screw specification	label
	(M2.5*L5MM) black	

GT60 (MS-16F3) screws specification

- 2、THERMAL-KIT total 8pcs screws
- specification:

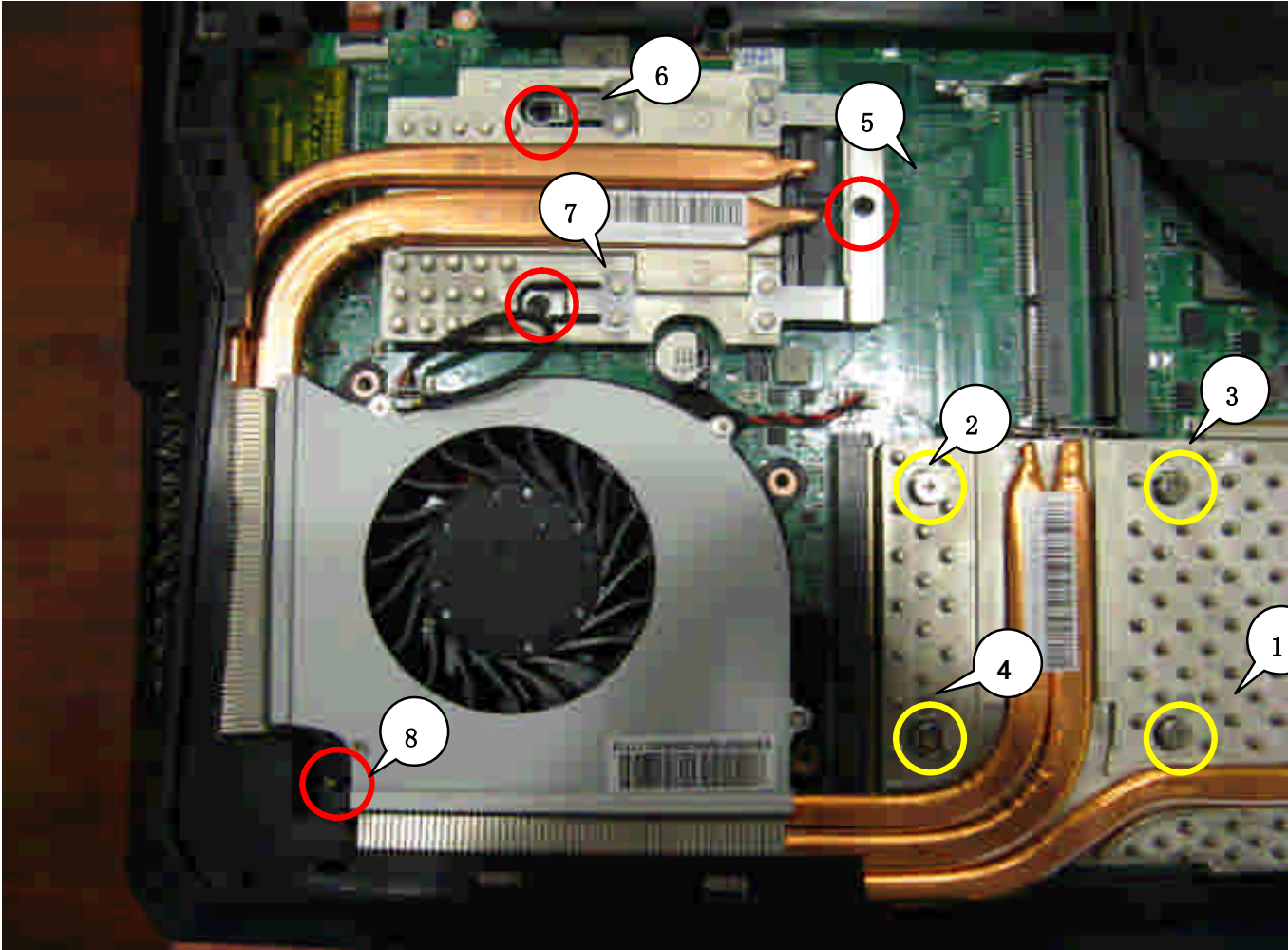

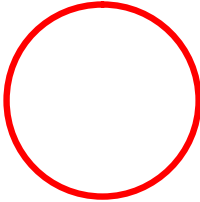
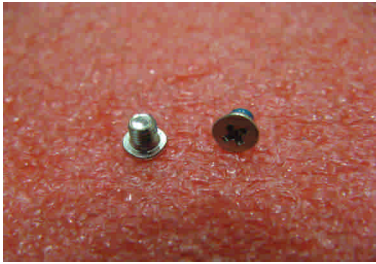
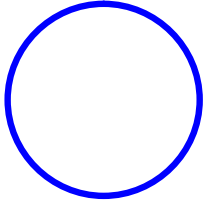
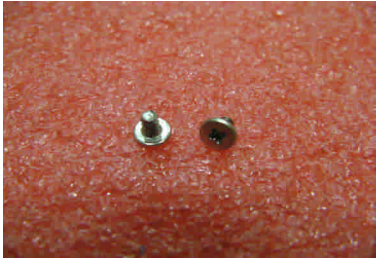
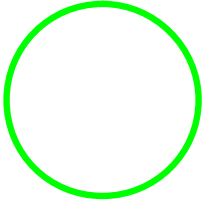


Photo	Screw specification	label
	<p>(M2.5*L5MM) black</p>	

GT60 (MS-16F3) screws specification

- 3、 WIRELESS CARD and HDD ASSY total 3pcs screws
- specification:



Photo	Screw specification	label
	(M3*L4MM) white	
	(M2*L3MM)white	

GT60 (MS-16F3) screws specification

- 4、UPCASE ASSY total 4pcs screws
- specification:

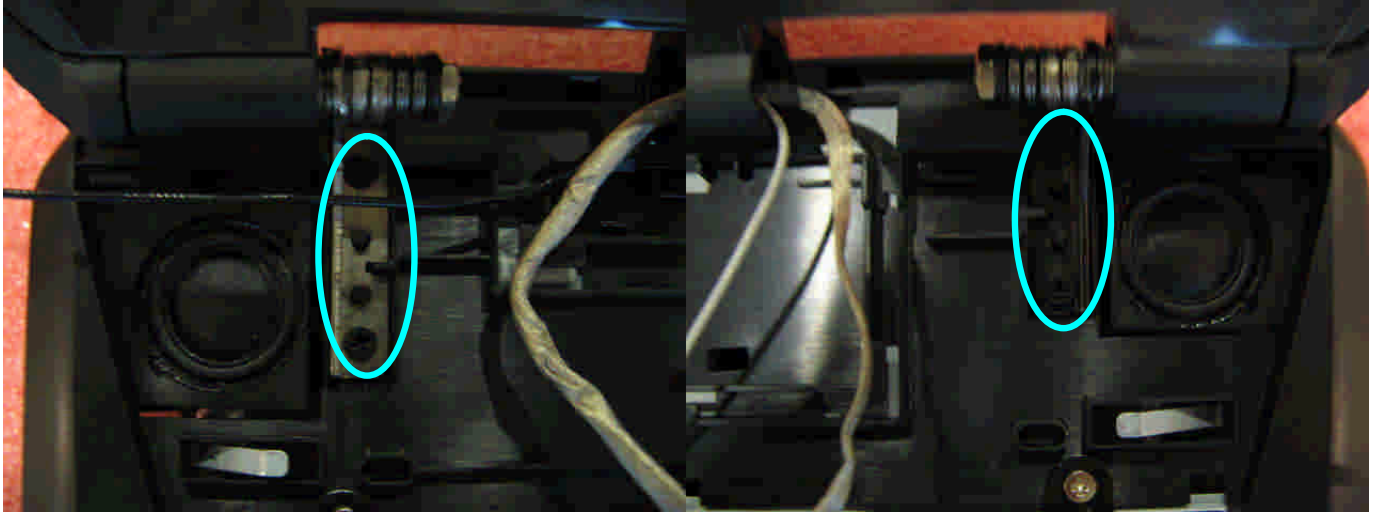

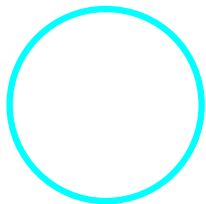

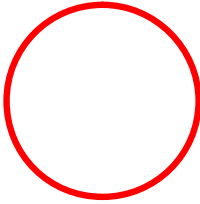
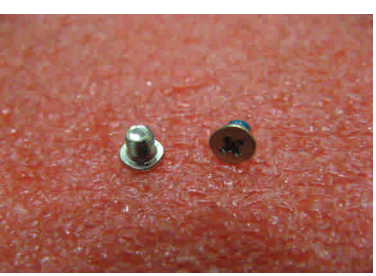
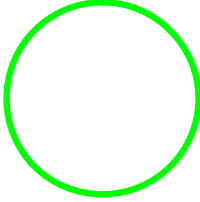


Photo	Screw specification	Label
	(M2.5*L7MM) black	

GT60 (MS-16F3) screws specification

- 5、LCD MODULE ASSY total 16pcs screws
- specification:



Photo	Screw specification	label
	<p>(M2.5*L5MM) black</p>	
	<p>(M2*L3MM)white</p>	

GT60 (MS-16F3) screws specification

- 6、NB total 3pcs screws
- specification:

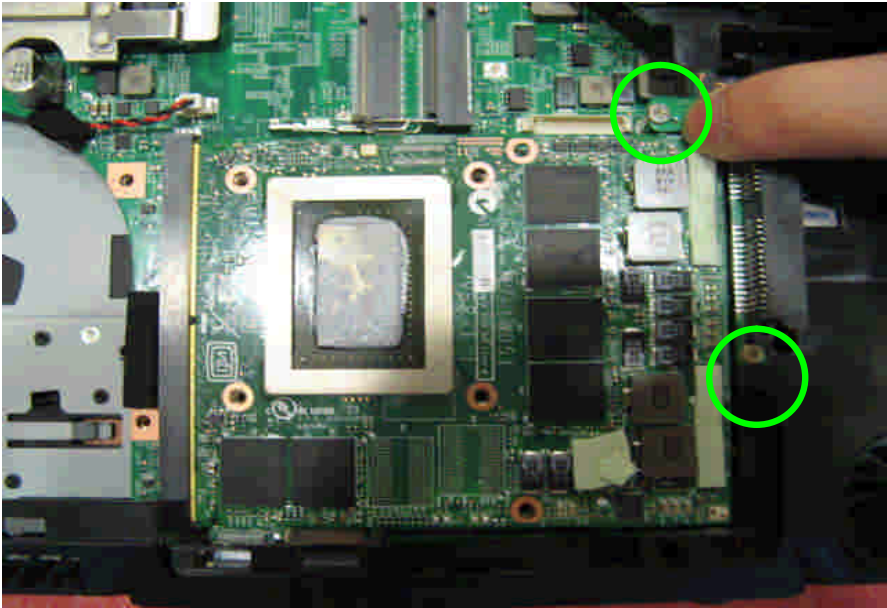
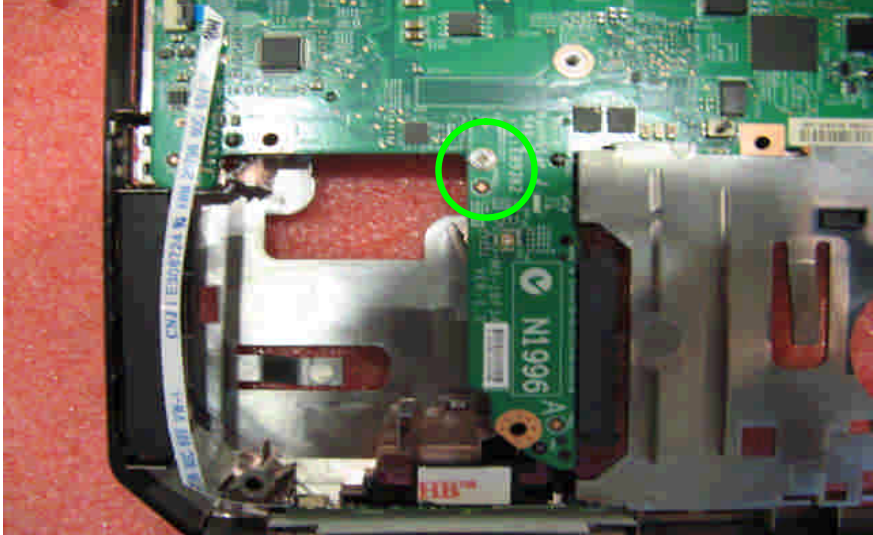
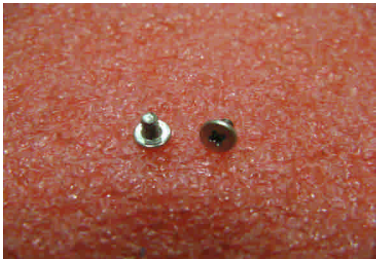


Photo	Screw specification	label
	(M2*L3MM) white	