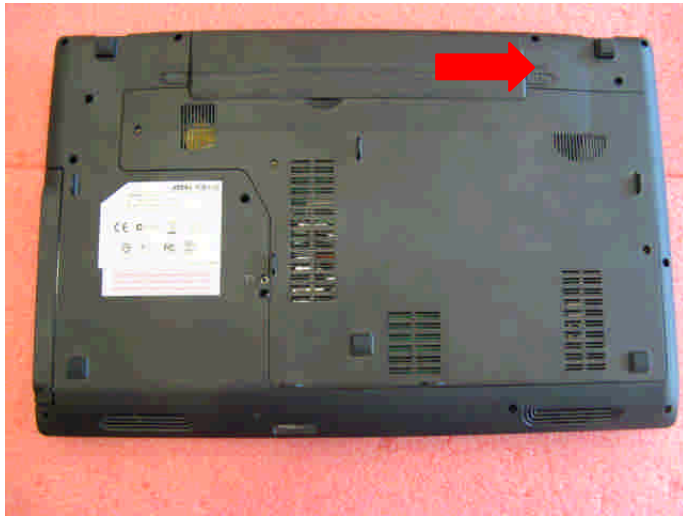


GE640 (MS-16GA) Disassembly Guide

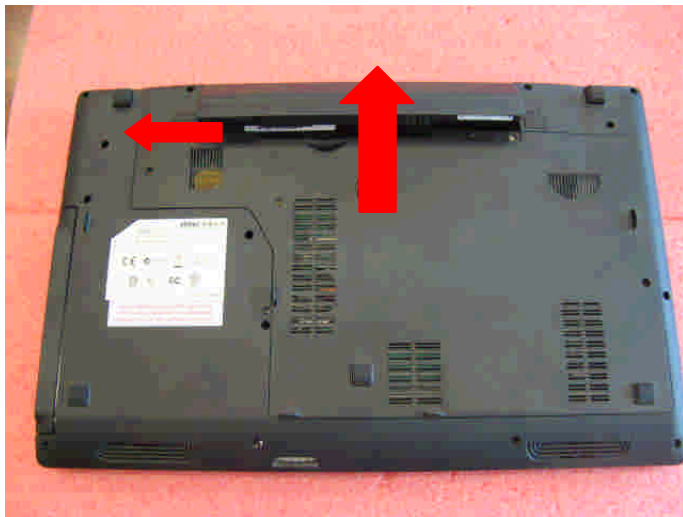
- 1、 BATTERY PACK
- 2、 BOTTOM DOOR ASSY
- 3、 HDD MODULE
- 4、 THERMAL-KIT、 CPU、 DRAM AND WIRELESS
- 5、 ODD MODULE
- 6、 SEPARATE UPPER CASE AND LOWER CASE
- 7、 LOWER CASE ASSY
- 8、 UPPER CASE ASSY
- 9、 LCD MODULE ASSY

GE640 (MS-16GA) Disassembly Guide

1、 BATTERY PACK



1.1: Move the “Unlock’ button base on left picture shows..

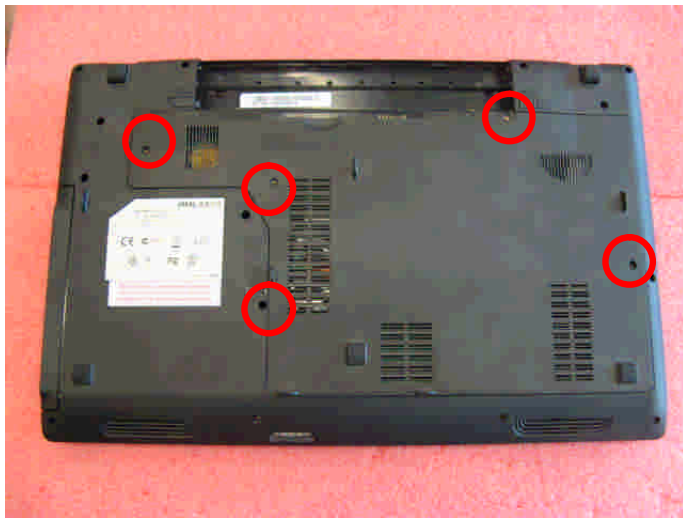


1.2: Release the “Release” button and move the battery pack base on left picture.

Component	P/N	Qty
Battery Pack	S9N-2262210-M47	1

GE640 (MS-16GA) Disassembly Guide

2、BOTTOM DOOR ASSY



2.1: Remove the 5 screws (M2.5*5mm). Then remove the Bottom door.

Attention: the screw driver torque is: 2.0-2.5 gf-cm

Component	P/N	Qty
Bottom door	307-6G1J214-P89	1
Screw	E43-1255001-G68	6

GE640 (MS-16GA) Disassembly Guide

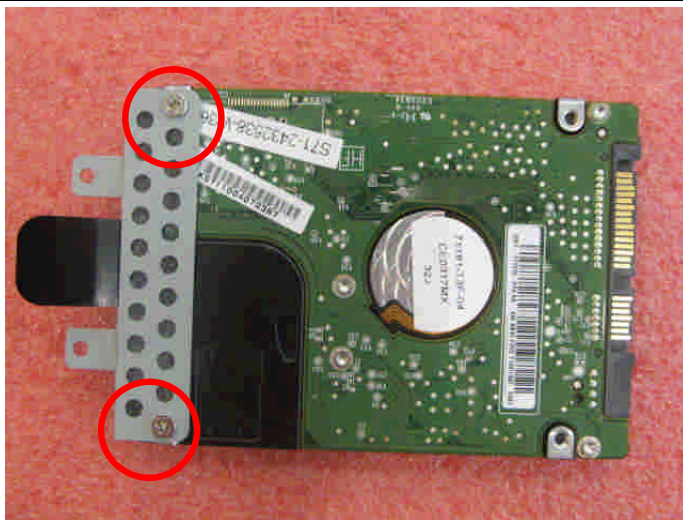
3、HDD MODULE



3.1: Remove the 2 screws (M2.5*5mm); then remove the HDD Module according to the direction as pic shows.

Attention: the screw driver torque is 2.0-2.5Kgf-cm

Component	P/N	Qty
Screw	E43-1255001-G68	2



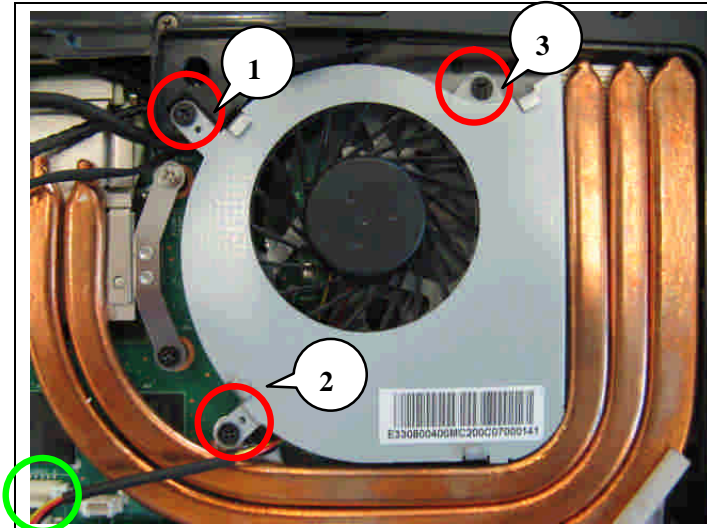
3.2: Remove the 2 screws (M3*3.5mm) that stabilize the HDD bracket, then remove the HDD bracket.

Attention: the screw driver torque is 3.0-3.5Kgf-cm

Component	P/N	Qty
Screw	E43-1303502-H29	2
HDD Bracket	307-6G10111-A89	1
HDD Module	S71-2475702-W36	1

GE640 (MS-16GA) Disassembly Guide

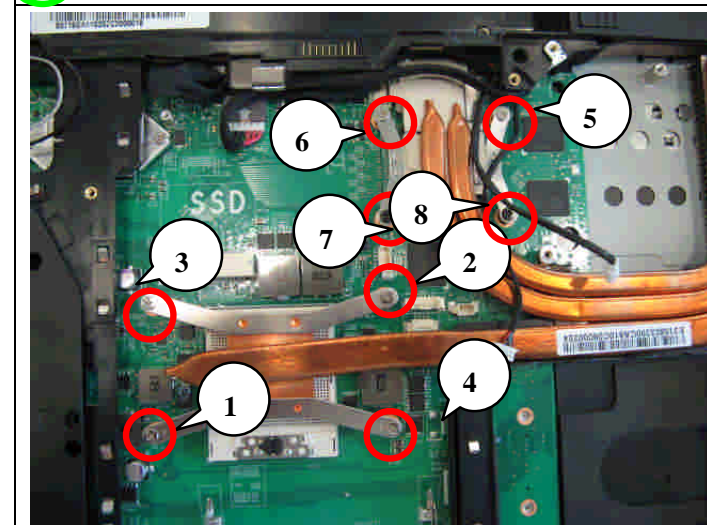
4、 THERMAL-KIT、 CPU 、 DRAM AND WIRELESS



4.1: Remove the 3 screws(M2.5*4mm) and FAN cable, after that remove the Fan.

Attention: the screw driver torque is 2.0-2.5Kgf-cm

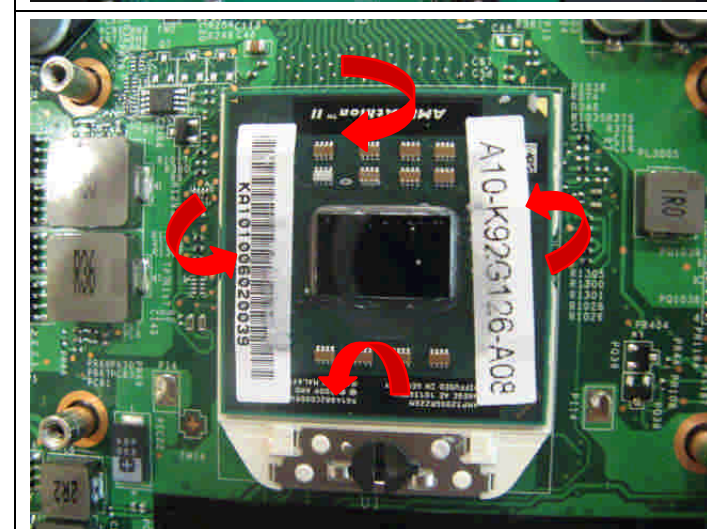
Component	P/N	Qty
Screw	E43-1254001-G68	3
FAN	E33-0800400-MC2	1



4.2: Remove the 8 screws (M2.5*4mm), after that remove the Heatsink.

Attention: the screw driver torque is 2.0-2.2Kgf-cm

Component	P/N	Qty
Screw	E43-1254001-G68	7
Heatsink	E31-0403231-TA9	1

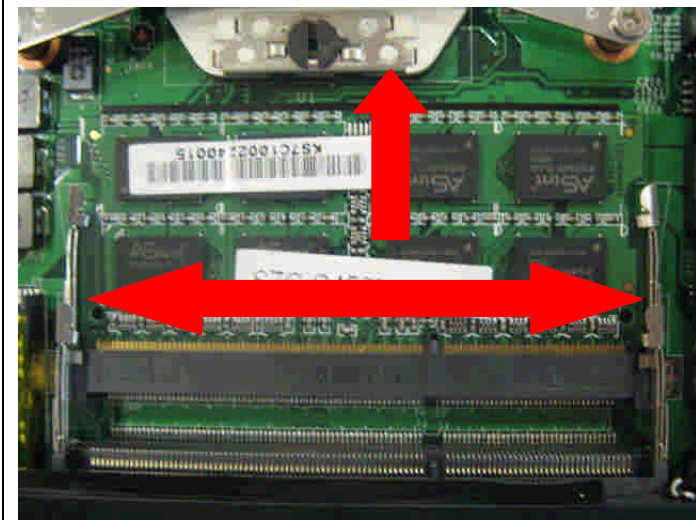


4.3: Open the CPU Slot with Screw Driver, then remove CPU Module as below.

Component	P/N	Qty
CPU	OA3-16F3011	1

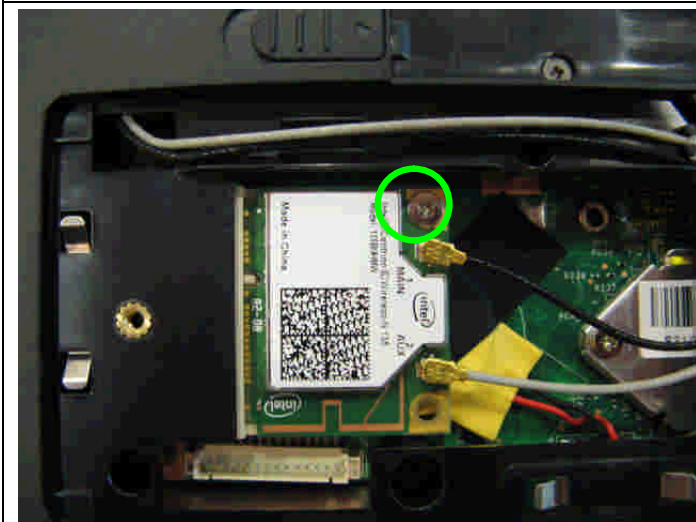
GE640 (MS-16GA) Disassembly Guide

4、 THERMAL-KIT、 CPU 、 DRAM AND WIRELESS



4.4: Push the two side shielding of RAM as pic shows; Then remove the RAM module according the direction as pic shows.

Component	P/N	Qty
RAM Module	S7C-S469H04-E54	1



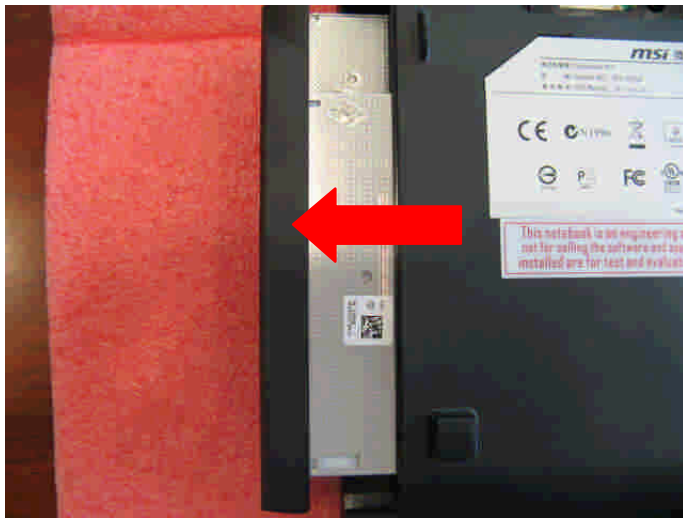
4.5: Remove 1 screw (M2*3mm); then remove the two side wireless card antenna as pic shows.

Attention: the screw driver torque is: 1.5-2.0Kgf-cm

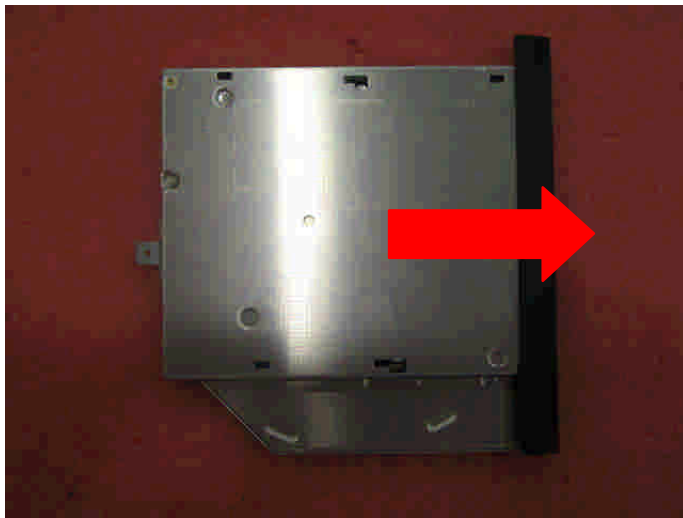
Component	P/N	Qty
WLAN Module	S57-08000F0-I06	1
Screw	E43-1203003-H29	1

GE640 (MS-16GA) Disassembly Guide

5. ODD MODULE

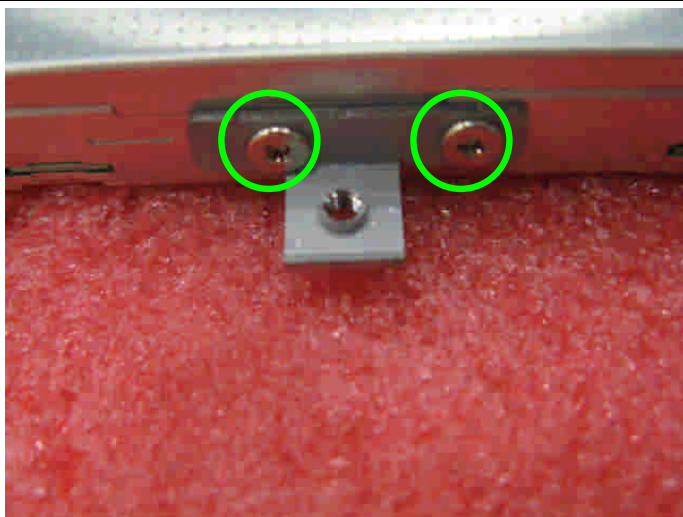


5.1: Remove the ODD Module according to the direction as pic shows.



5.2: Remove ODD Bezel as below.

Component	P/N	Qty
ODD Bezel	307-6G1F212-P89	1



5.3: Remove 2pcs (M2*3mm) Screws; Then remove ODD Bracket as below.

Attention: the screw driver torque is 1.5-2.0Kgf-cm

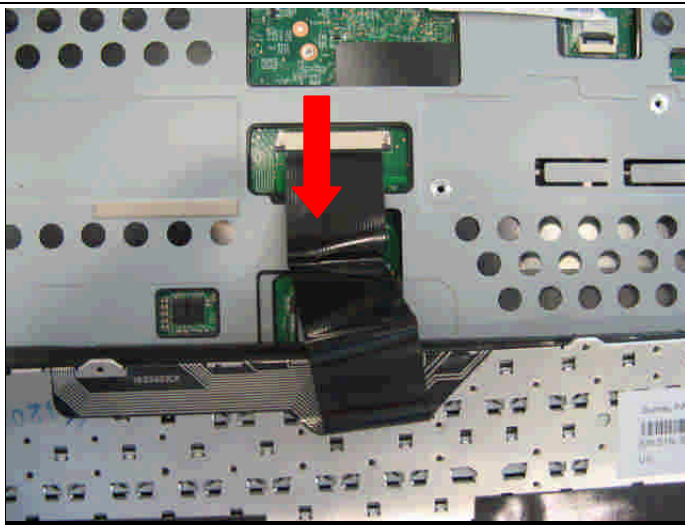
Component	P/N	Qty
Screw	E43-1203003-H29	2
ODD Bracket	E2M-6G10711-A89	1
ODD Module	S7D-2270076-T87	1

GE640 (MS-16GA) Disassembly Guide

6. SEPARATE UPPER CASE AND LOWER CASE

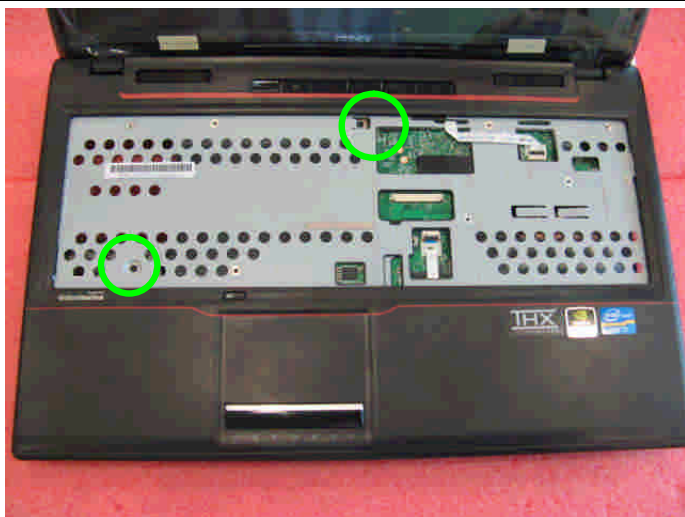


6.1: Remove the Keyboard. firstly from upside, then left side to right side, last remove down side.



6.2 : Firstly push connector according to the direction as pic shows; then remove the cable.

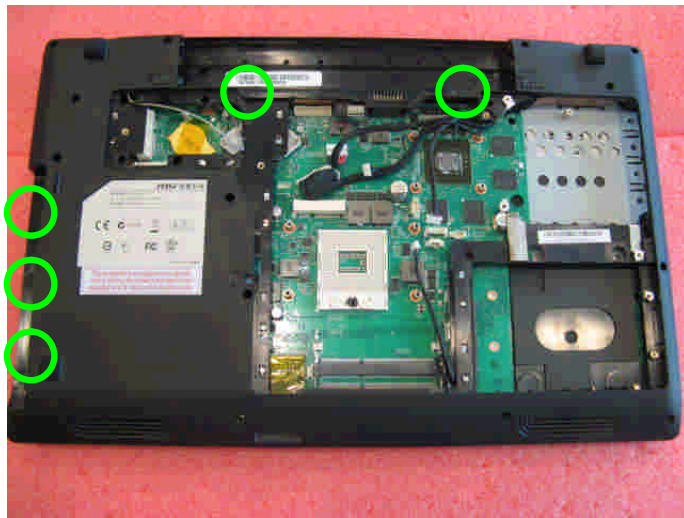
Component	P/N	Qty
Keyboard	S1N-3EUS2D1-SA0	1



6.3: Remove the cable.

GE640 (MS-16GA) Disassembly Guide

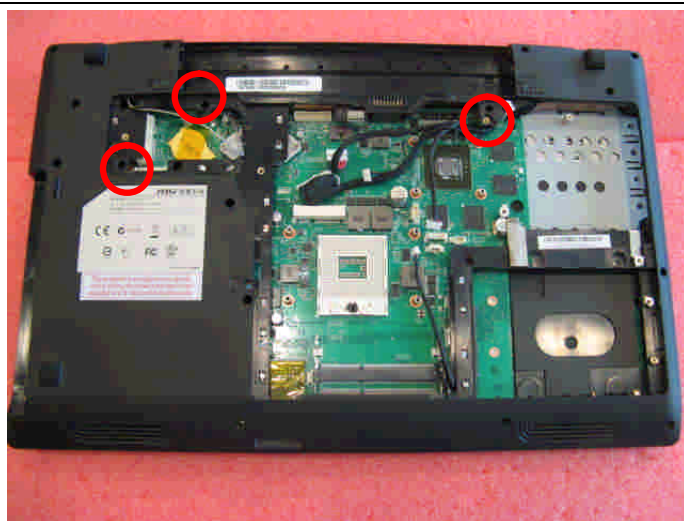
6、SEPARATE UPPER CASE AND LOWER CASE



6.4: Remove 5 screws (M2*3.5mm).

Attention: the screw driver torque is 1.5-2.0Kgf-cm

Component	P/N	Qty
Screw	E43-1203501-H29	5



6.5: Remove 3 screws (M2.5*5mm).

Attention: the screw driver torque is 2.0-2.5Kgf-cm

Component	P/N	Qty
Screw	E43-1255001-G68	3



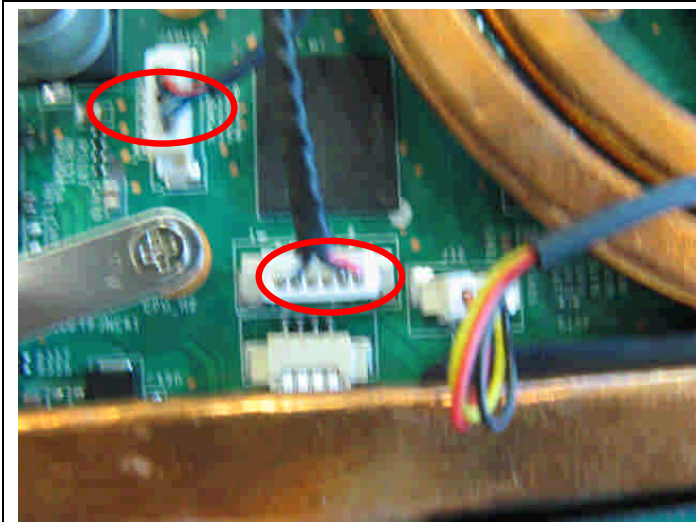
6.6: Remove the 14 screws (M2.5*5mm) .

Attention: the screw driver torque is 2.0-2.5Kgf-cm

Component	P/N	Qty
Screw	E43-1255001-G68	15

GE640 (MS-16GA) Disassembly Guide

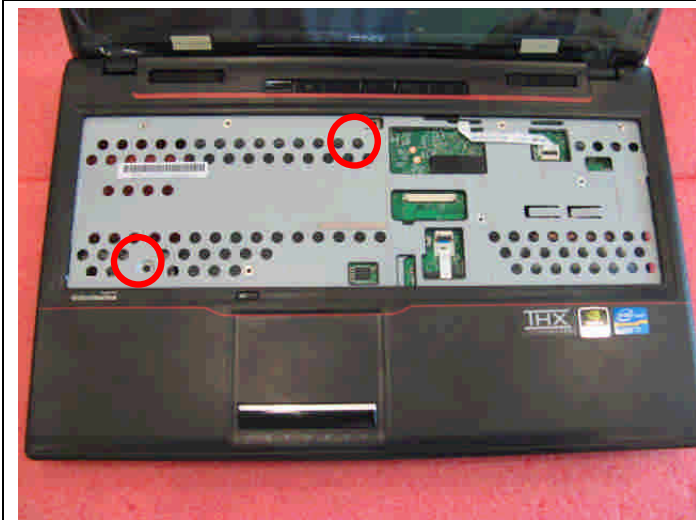
6、SEPARATE UPPER CASE AND LOWER CASE



6.7: Remove the speaker and MIC cable.



6.8: Remove the power and LVDS cable, as pic shows.



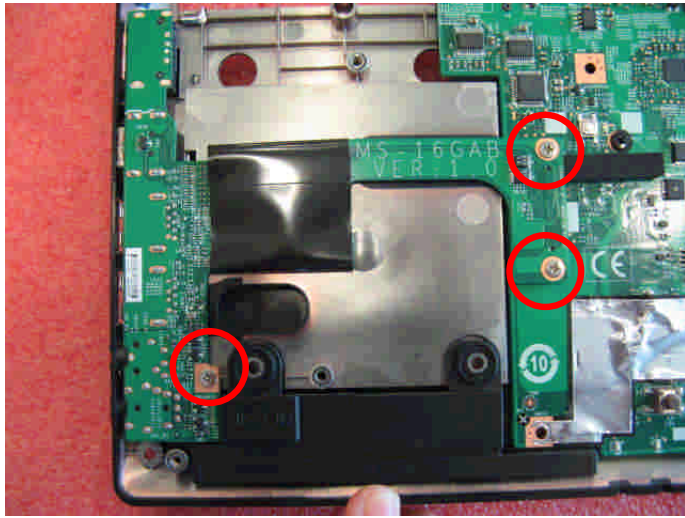
6.9: Remove the 2 screws (M2.5*5mm). then remove the upper case.

Attention: the screw driver torque is 2.0-2.5Kgf-cm

Component	P/N	Qty
Screw	E43-1255001-G68	2

GE640 (MS-16GA) Disassembly Guide

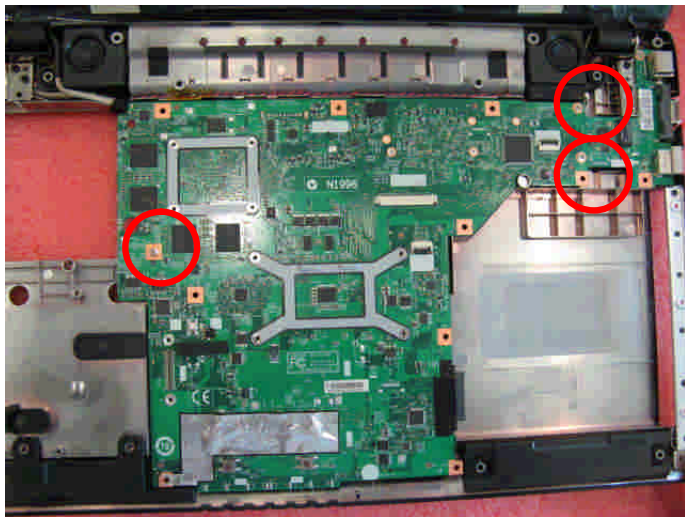
7、 LOWER CASE ASSY



7.1 : Remove the 3screws (M2.5*4mm).then remove the USB board.

Attention: the screw driver torque is 2.0-2.5Kgf-cm

Component	P/N	Qty
screw	E43-1254001-H29	3
USB board	607-16GAB-010	1



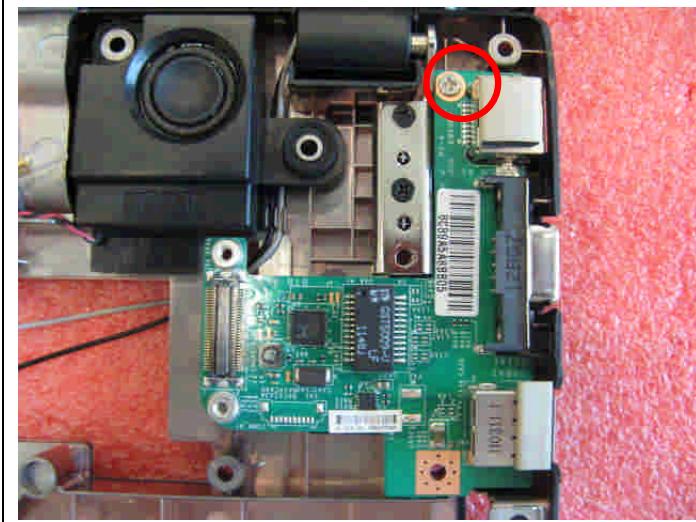
7.2 : Remove the 3 screws (M2.5*4mm).then remove the main board.

Attention: the screw driver torque is 2.0-2.5Kgf-cm

Component	P/N	Qty
screw	E43-1254001-H29	3
Main board	607-16GA1-040	1

GE640 (MS-16GA) Disassembly Guide

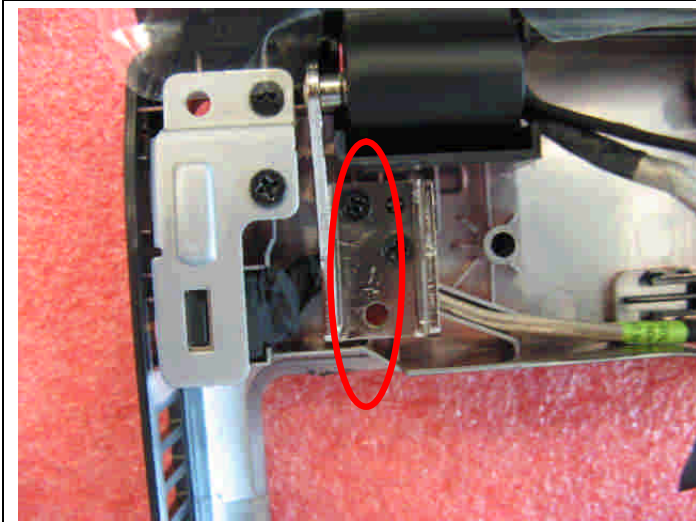
7、 LOWER CASE ASSY



7.3: Remove 1 screw (M2.5*4mm); then remove the IO board.

Attention: the screw driver torque is: 2.0-2.5Kgf-cm

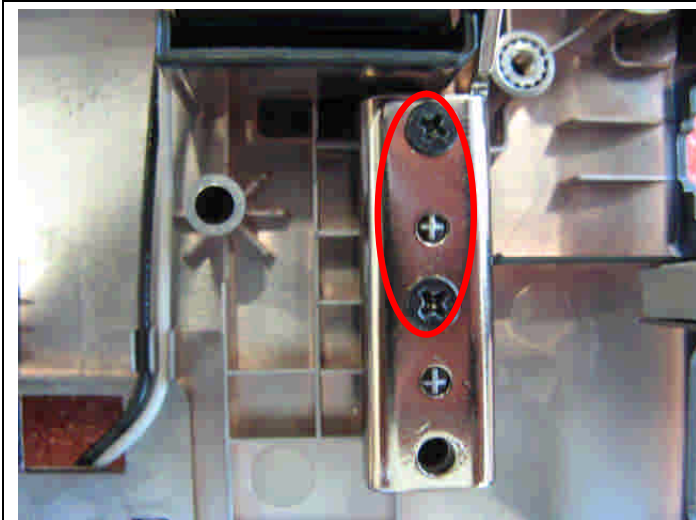
Component	P/N	Qty
IO board	607-16GAA-010	1
Screw	E43-1254001-H29	1



7.4 : Remove the 2 screws (M2.5*5mm) that stabilize the left LCD hinge.

Attention: the screw driver torque is 2.5-3.0Kgf-cm

Component	P/N	Qty
Screw	E43-1255001-G68	2



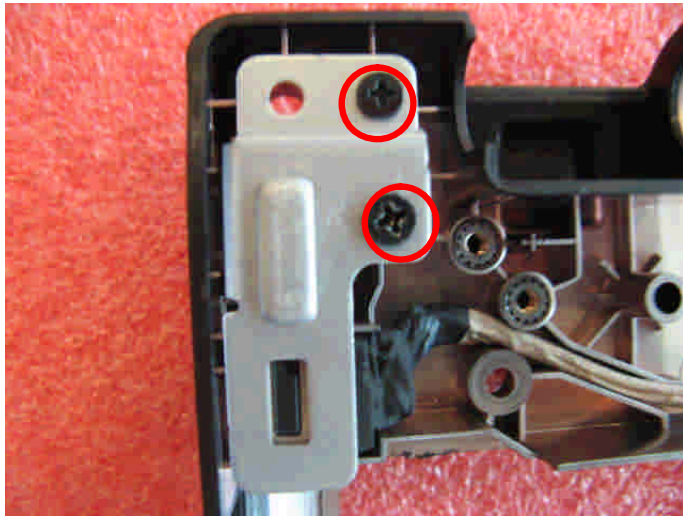
7.5 : Remove the 2screws (M2.5*5mm) that stabilize the right LCD hinge.

Attention: the screw driver torque is 2.5-3.0Kgf-cm

Component	P/N	Qty
Screw	E43-1255001-G68	2

GE640 (MS-16GA) Disassembly Guide

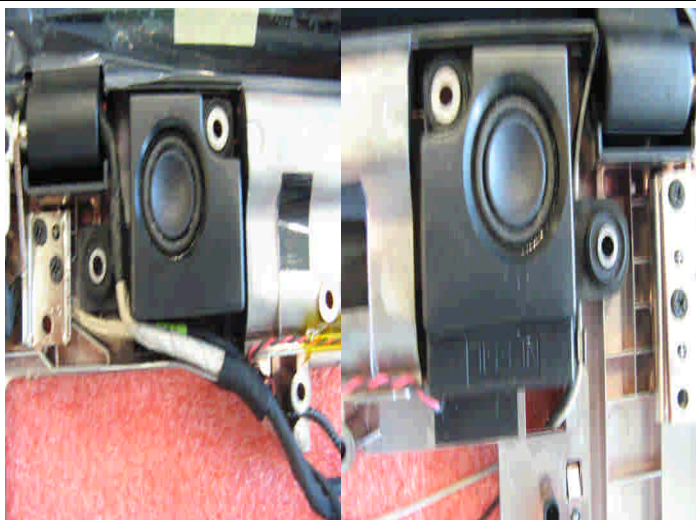
7、 LOWER CASE ASSY



7.6 : Remove the 2screws (M2.5*5mm), then remove the power conn.

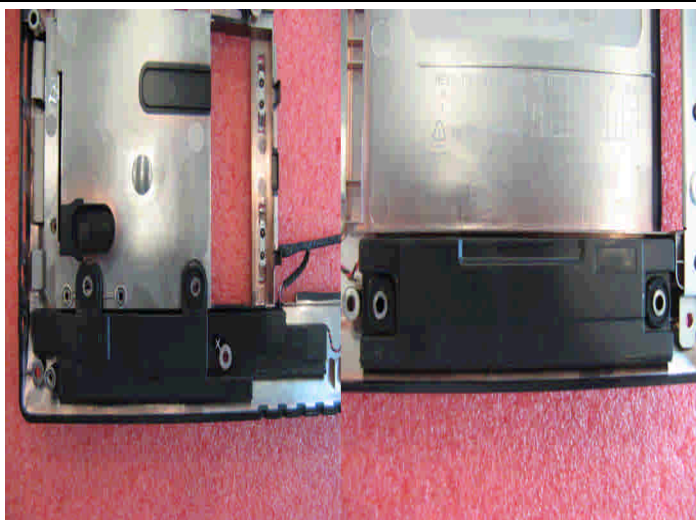
Attention: the screw driver torque is 2.5-3.0Kgf-cm

Component	P/N	Qty
Screw	E43-1255001-G68	2



7.7: Remove the Speaker module from lower case

Component	P/N	Qty
Speaker	S33-A020241-F33	1
Lower Case	307-6G1D237-P89	1

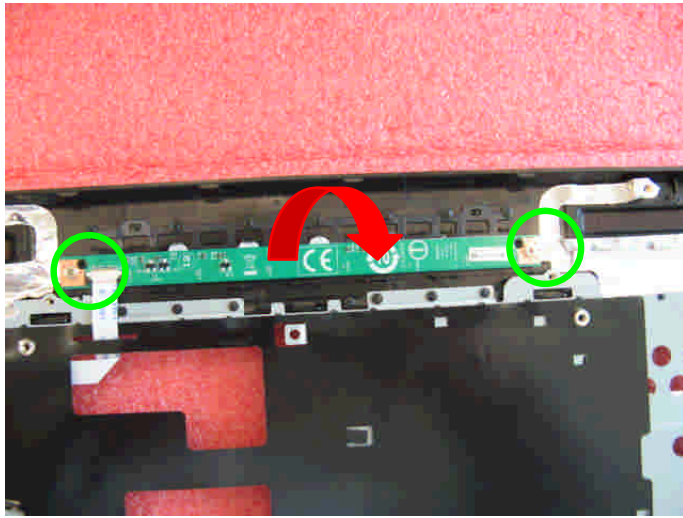


7.8: Remove the Speaker module

Component	P/N	Qty
Speaker	S33-A020240-F33	1

GE640 (MS-16GA) Disassembly Guide

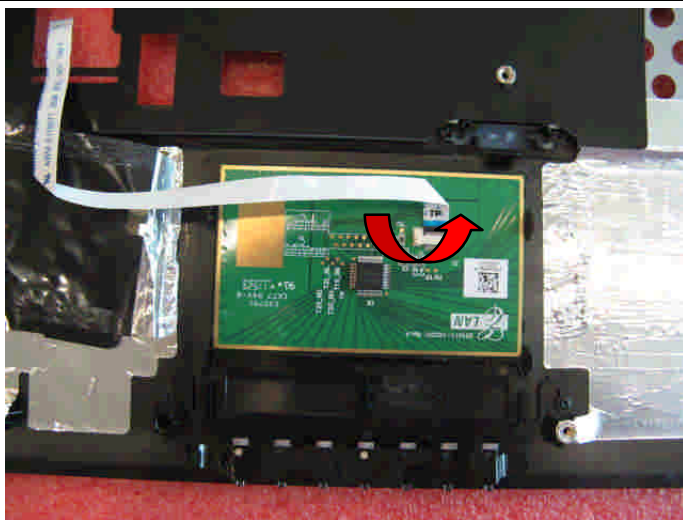
8、UPPER CASE ASSY



8.1: Remove 2 screws (M2*3mm), then remove the Power board.

Attention: the screw driver torque is 1.5-2.0Kgf-cm

Component	P/N	Qty
screw	E43-1203003-H29	2
Power board	607-16GAC-010	1

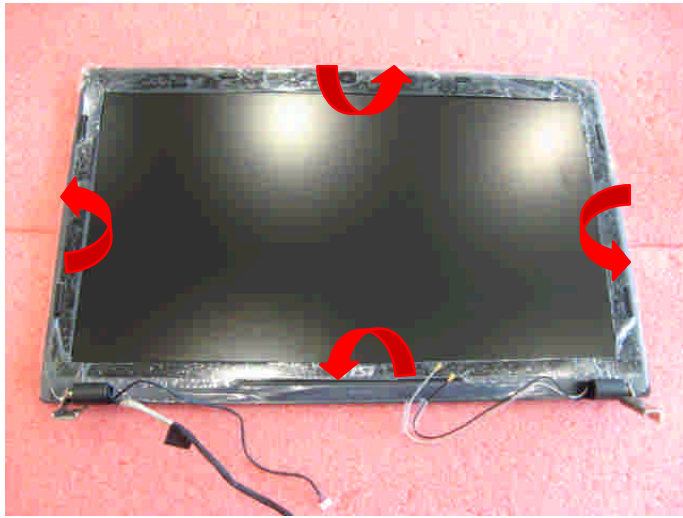


8.2 : Remove the Mylar, then release the connector that stabilizes the T/P Cable, after that remove the T/P module.

Component	P/N	Qty
Upper Case	307-6G4C512-TF1	1
Touchpad Module	S78-3700610-E47	1

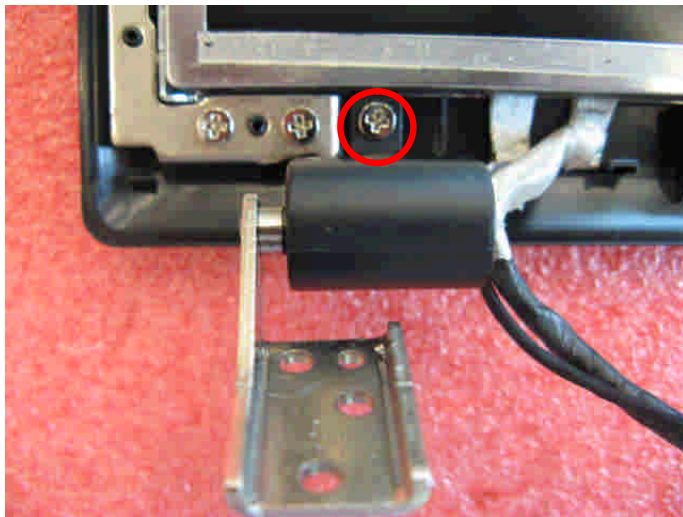
GE640 (MS-16GA) Disassembly Guide

9、 LCD MODULE ASSY



9.1: When removing the LCD bezel, should begin from the upside, then the two sides to downside.

Component	P/N	Qty
LCD Bezel	307-6G1B221-U22	1



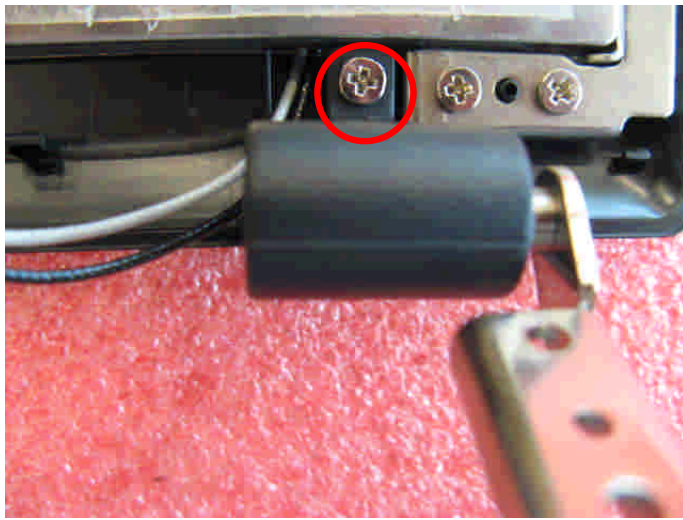
9.2: Remove the 1 screw (M2.5*4mm), then remove the left hinge cap.

Attention: the screw driver torque is 1.2-1.5Kgf-cm

Component	P/N	Qty
HINGE CAP_L	E2P-6G10111-P89	1
screw	E43-1254001-G68	1

GE640 (MS-16GA) Disassembly Guide

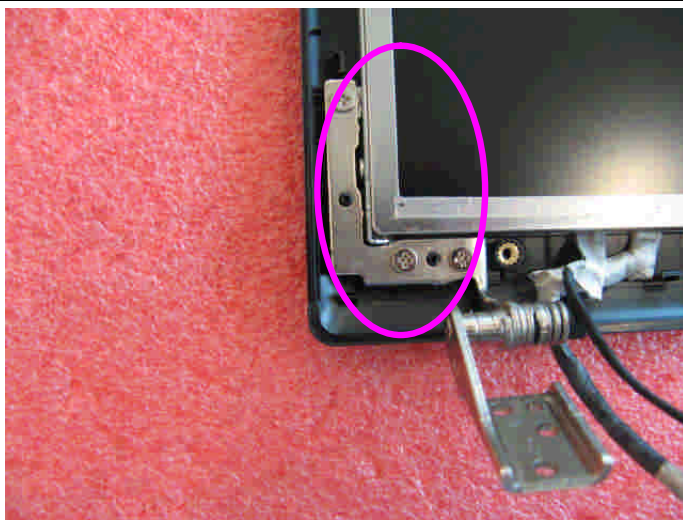
9、 LCD MODULE ASSY



9.3 : Remove the 1 screw (M2.5*4mm), then remove the right hinge cap.

Attention: the screw driver torque is 1.2-1.5Kgf-cm

Component	P/N	Qty
HINGE CAP_R	E2P-6G10211-P89	1
screw	E43-1254001-G68	1



9.4: Remove 3 screws (M2.5*4mm) that stabilize the left hinge.

Attention: the screw driver torque is 3.0-3.5Kgf-cm

Component	P/N	Qty
screw	E43-1254001-G68	2
Hinge L	E2M-6G10112-G60	1



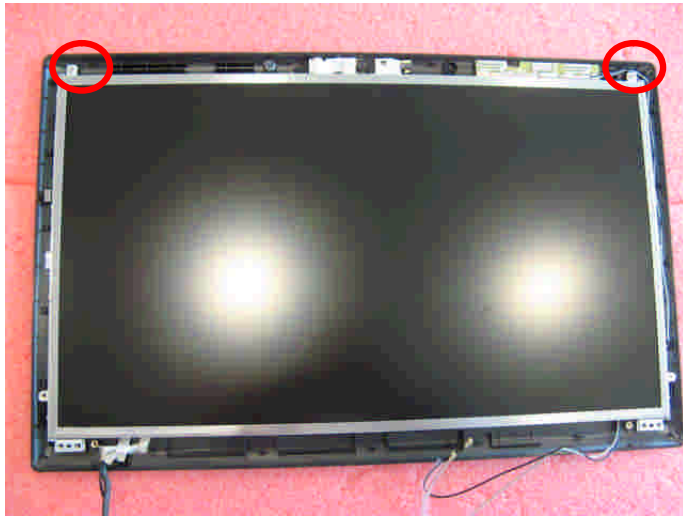
9.5: Remove 3 screws (M2.5*4mm) that stabilize the right hinge.

Attention: the screw driver torque is 3.0-3.5Kgf-cm

Component	P/N	Qty
screw	E43-1254001-G68	3
Hinge R	E2M-6G10212-G60	1

GE640 (MS-16GA) Disassembly Guide

9、 LCD MODULE ASSY



9.6 : Remove the 2 screws (M2.5*4mm), then remove the camera cable and remove the display module from LCD cover.

Attention: the screw driver torque is 3.0-3.5Kgf-cm

Component	P/N	Qty
Screw	E43-1254001-G68	2

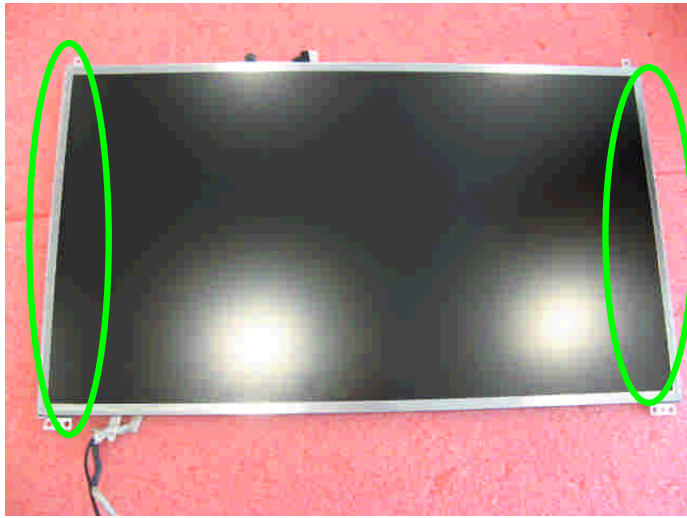


9.7: Remove the LVDS cable from display module

Component	P/N	Qty
LVDS Cable	K19-3032002-V03	1

GE640 (MS-16GA) Disassembly Guide

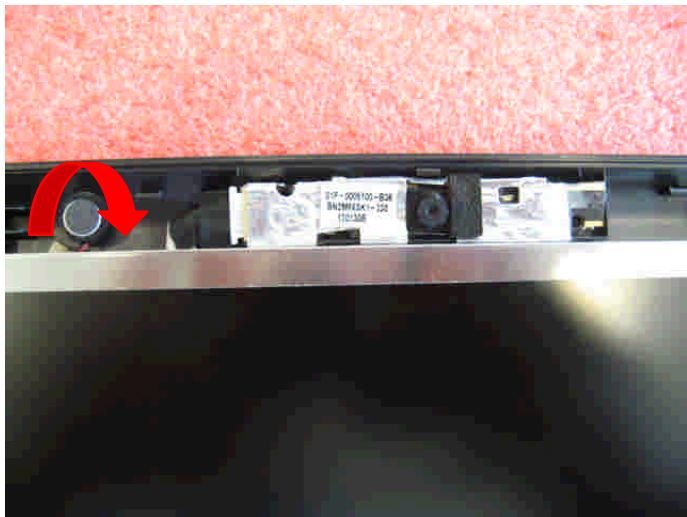
9、 LCD MODULE ASSY



9.8: Remove the 8 screws (M2*3mm).

Attention: the screw driver torque is 1.5-2.0Kgf-cm

Component	P/N	Qty
Display Module	S1J-6E0A002-L47	1
LCD BRACKET-L	E2M-6G10312-A89	1
LCD BRACKET-R	E2M-6G10412-A89	1
Screw	E43-1203003-G68	8

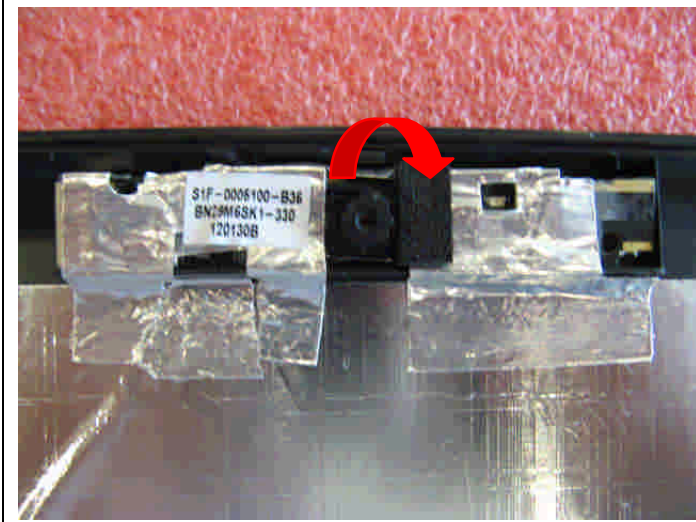


9.9: Remove the MIC Module as left picture show

Component	P/N	Qty
MIC Module	S34-2101200-K03	1

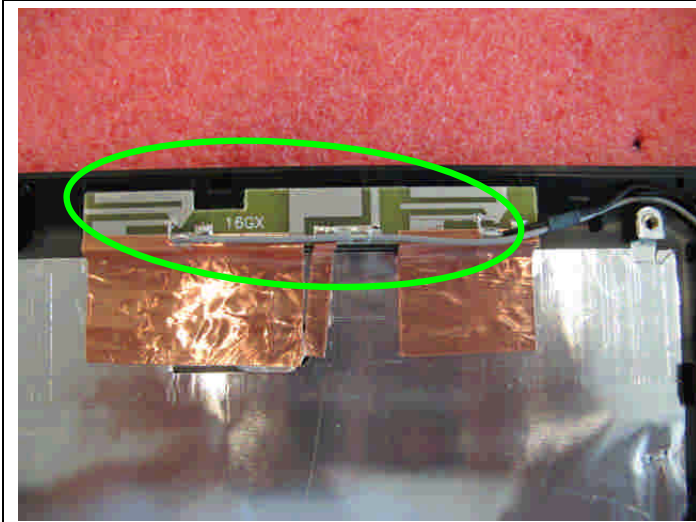
GE640 (MS-16GA) Disassembly Guide

9、 LCD MODULE ASSY



9.10: Remove the CMOS camera module according to the sequence as pic shows.


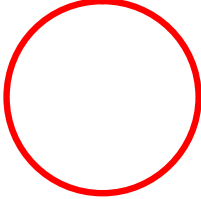
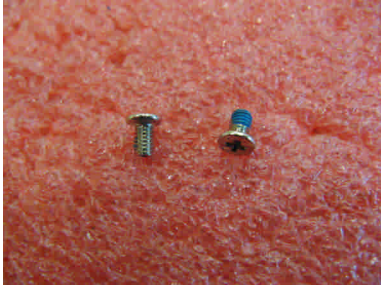
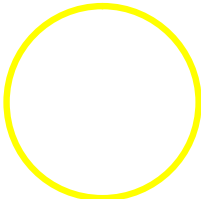
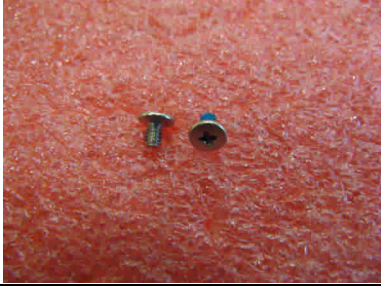
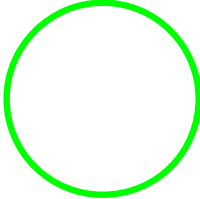
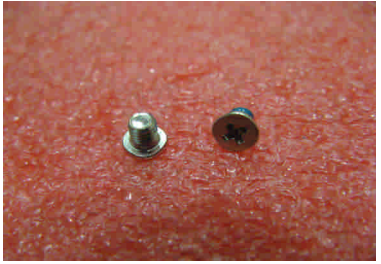
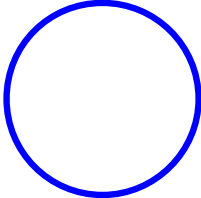
Component	P/N	Qty
Camera Module	S1F-0005050-B36	1



9.11: Remove the WIRELESS Antenna board from LCD Cover.

Component	P/N	Qty
Antenna	S79-1800Y20-J51	1
LCD Cover	307-6G1A132-P89	1

GE640 (MS-16GA) screws specification

Photo	Screw specification	Label
	(M2.5*L5MM)black	
	(M2.5*L4MM) white	
	(M2*L3MM)white	
	(M3*L3.5MM) white	

GE640 (MS-16GA) screws specification

■ 1、BOTTOM ASSY total 19 pcs screws

■ specification:

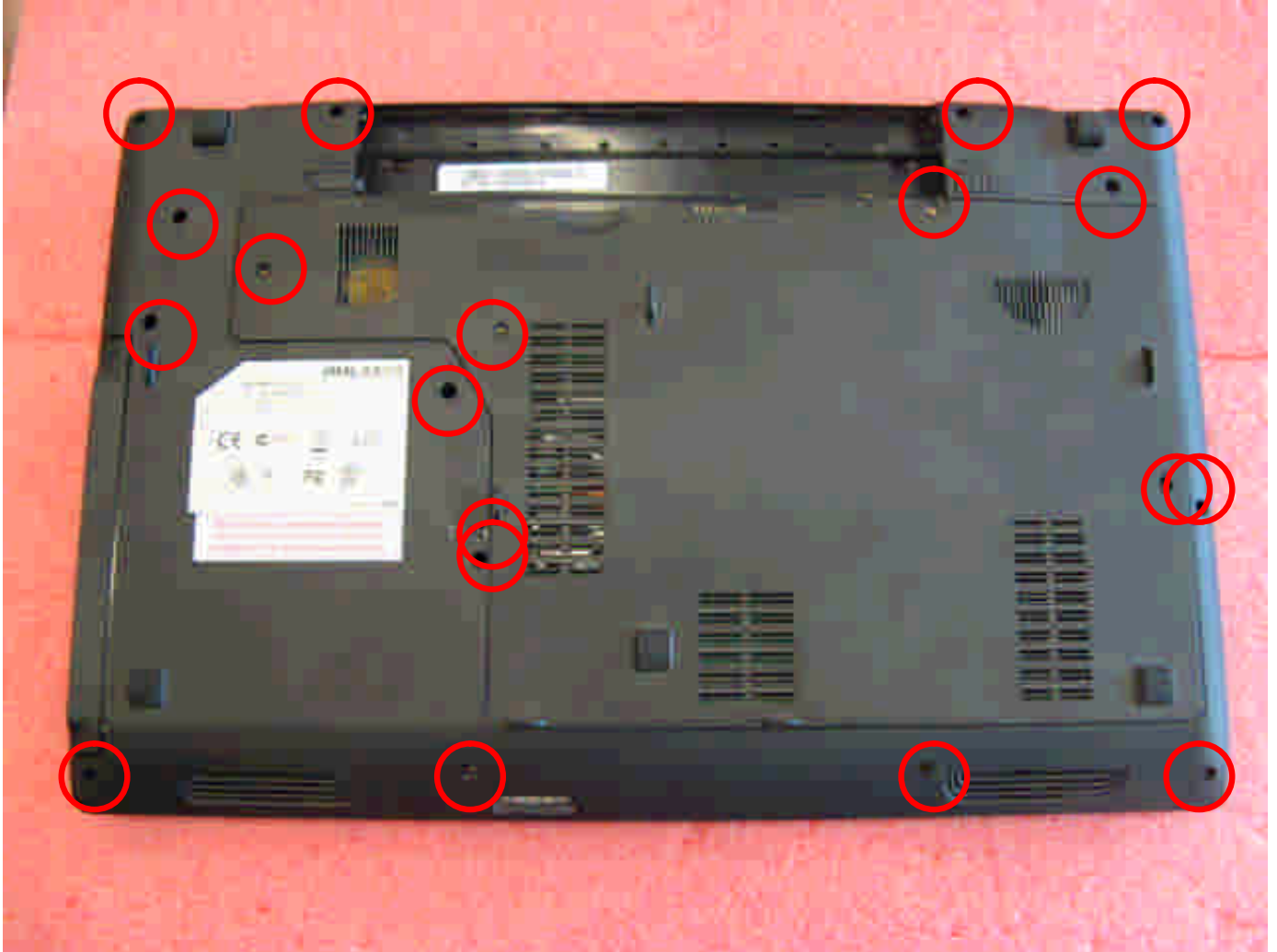

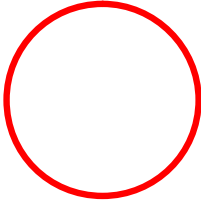


Photo	Screw specification	label
	(M2.5*L5MM) black	

GE640 (MS-16GA) screws specification

- 2、THERMAL-KIT total 8pcs screws
- specification:

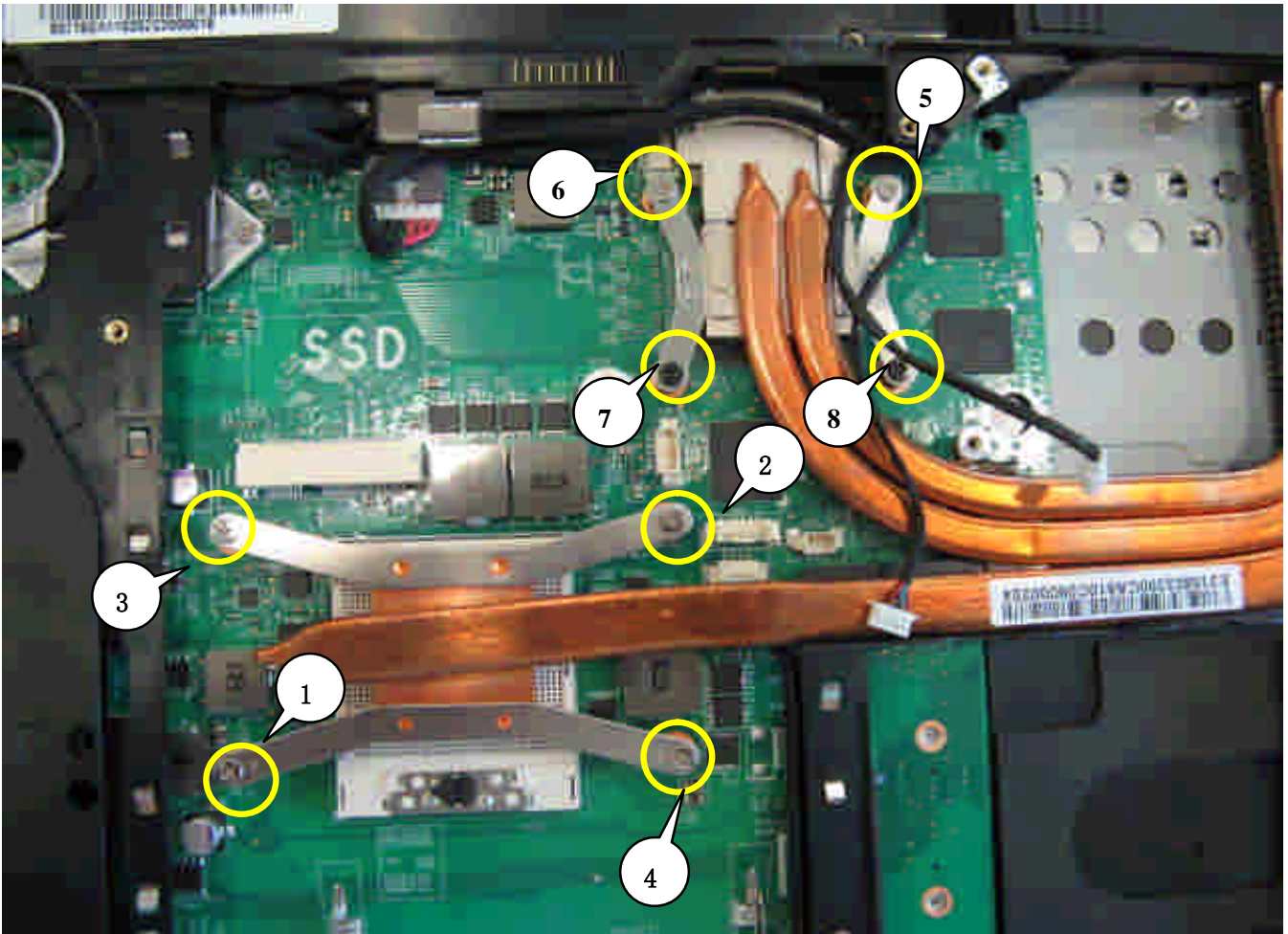
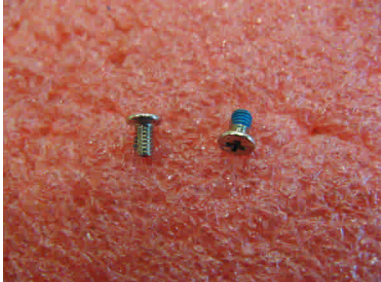
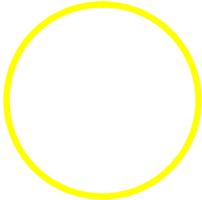


Photo	Screw specification	label
	(M2.5*L4MM) white	

GE640 (MS-16GA) screws specification

- 3、 WIRELESS CARD and HDD ASSY total 3pcs screws
- specification:

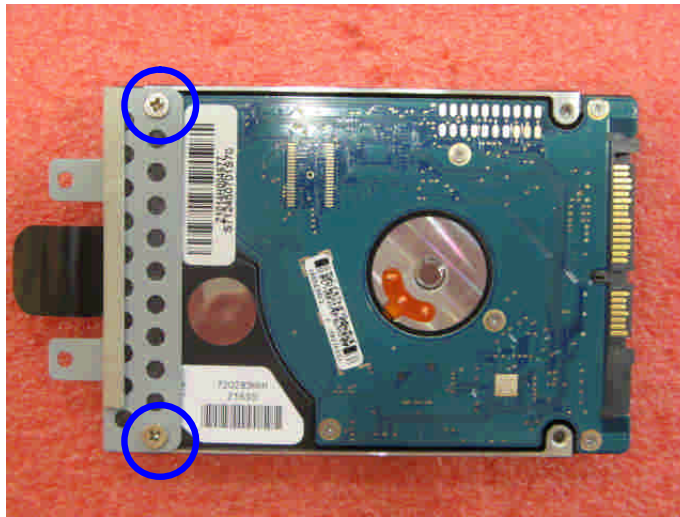
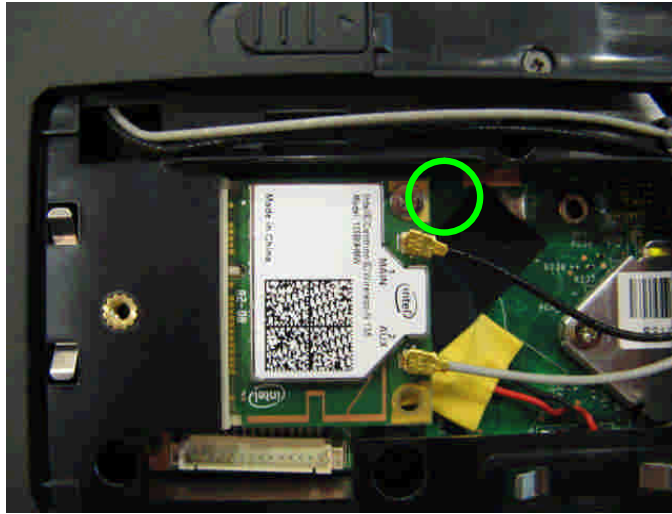
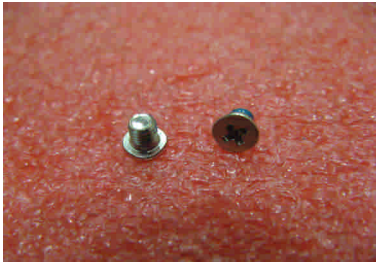
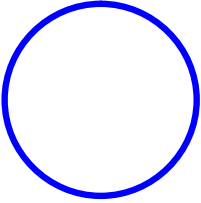
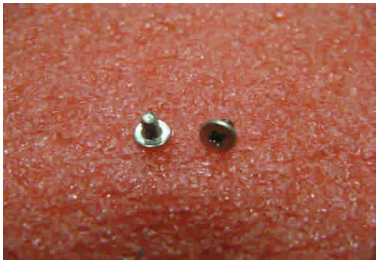
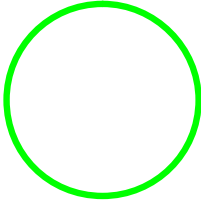


Photo	Screw specification	label
	(M3*L3.5MM) white	
	(M2*L3MM)white	

GE640 (MS-16GA) screws specification

■ 4、NB total 7pcs screws

■ specification:

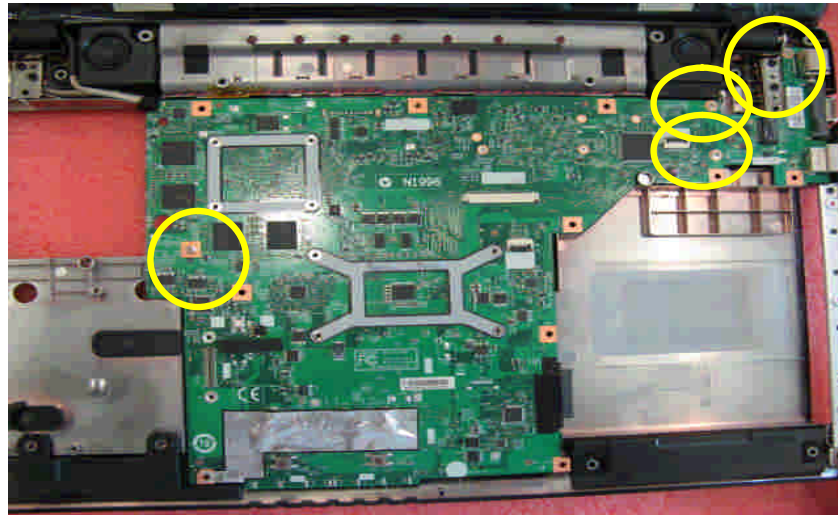
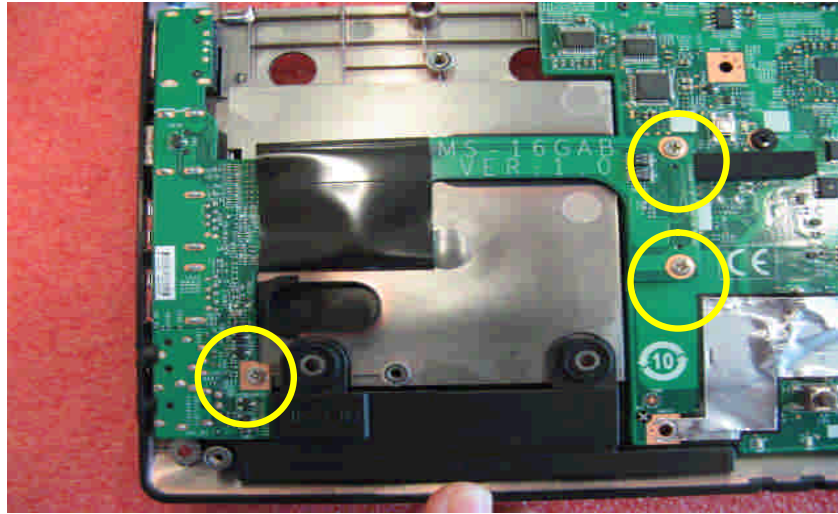
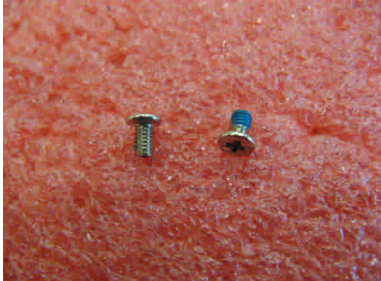
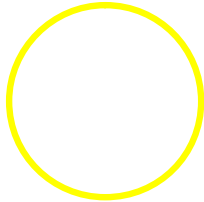


Photo	Screw specification	label
	(M2.5*L4MM) white	

GE640 (MS-16GA) screws specification

- 5、UPCASE ASSY total 4pcs screws
- specification:

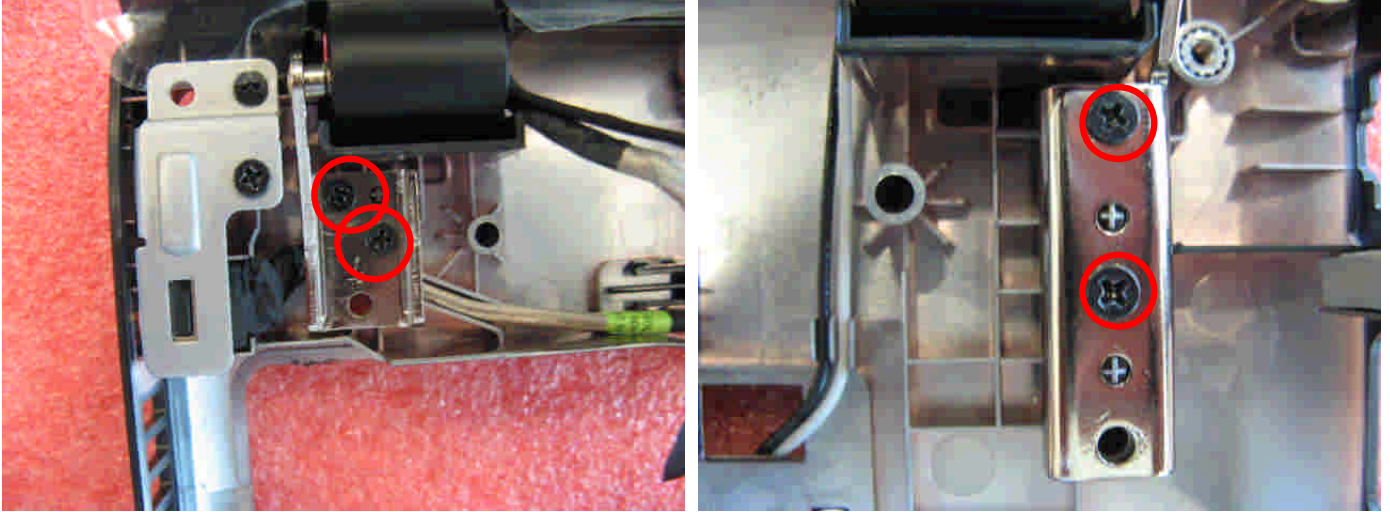

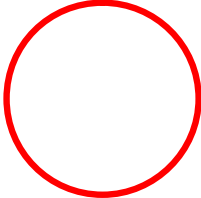


Photo	Screw specification	Label
	(M2.5*L5MM) black	

GE640 (MS-16GA) screws specification

■ 6、LCD Hinge Cap ASSY total 2pcs screws

■ specification:

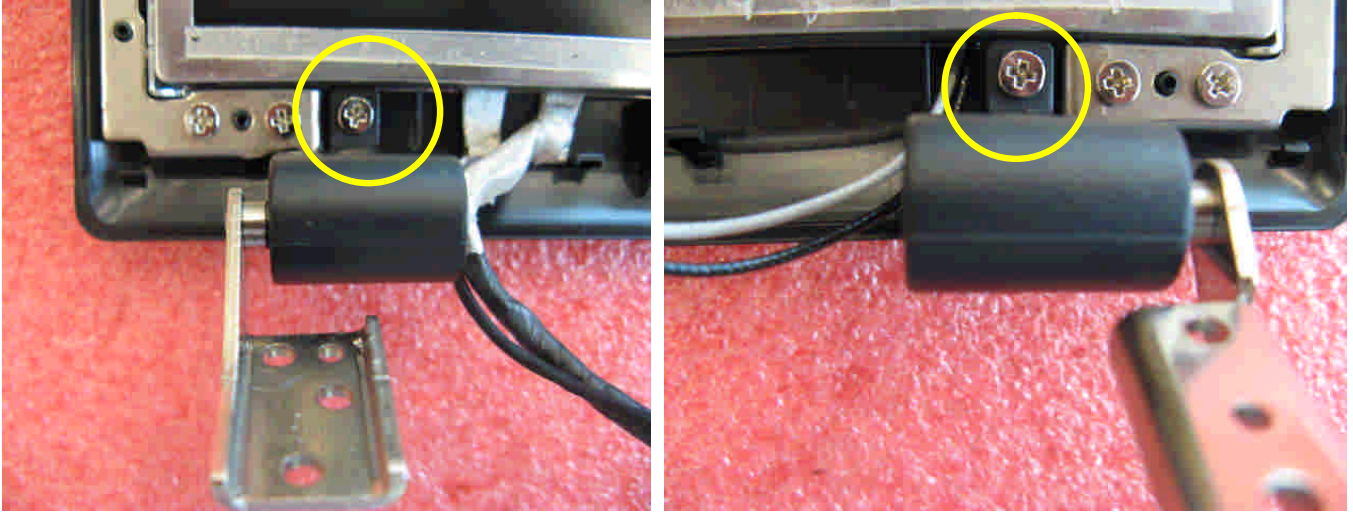
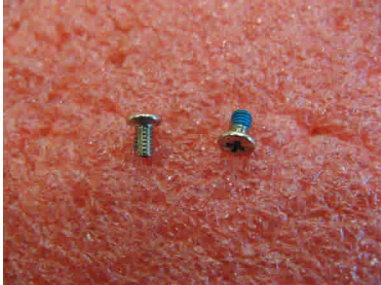
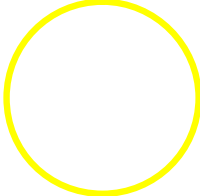



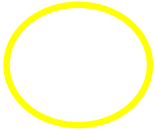
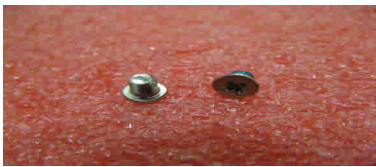
Photo	Screw specification	label
	(M2.5*L4MM) white	

GE640 (MS-16GA) screws specification

■ 7、LCD MODULE ASSY total 16pcs screws

■ specification:



Photo	Screw specification	label
	(M2.5*L4MM) white	
	(M2*L3MM)white	