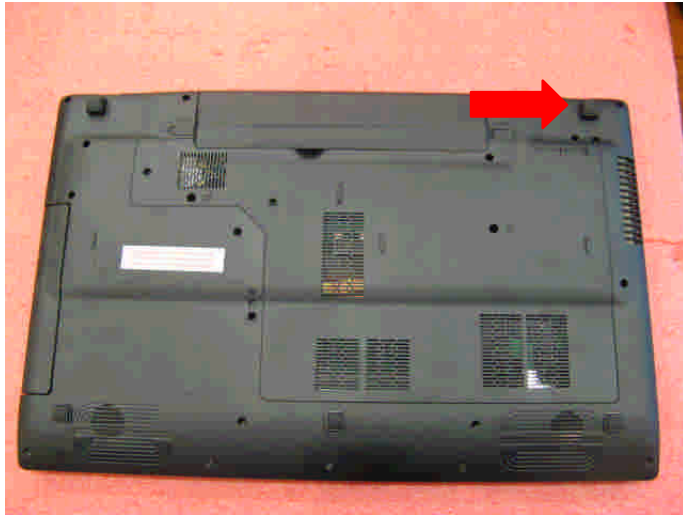


# **GE70 (MS-1756) Disassembly Guide**

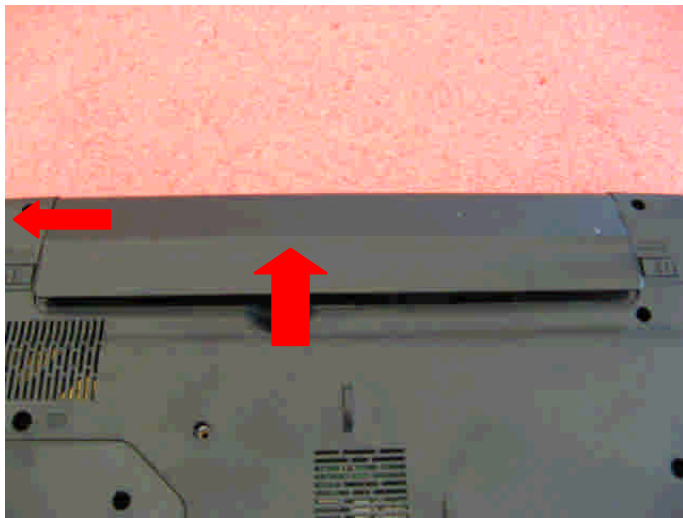
- 1、 BATTERY PACK
- 2、 BOTTOM DOOR ASSY
- 3、 HDD MODULE
- 4、 THERMAL-KIT、 CPU、 DRAM AND WIRELESS
- 5、 ODD MODULE
- 6、 SEPARATE UPPER CASE AND LOWER CASE
- 7、 LOWER CASE ASSY
- 8、 UPPER CASE ASSY
- 9、 LCD MODULE ASSY

# GE70 (MS-1756) Disassembly Guide

## 1、 BATTERY PACK



1.1: Move the “Unlock” button base on left picture shows.

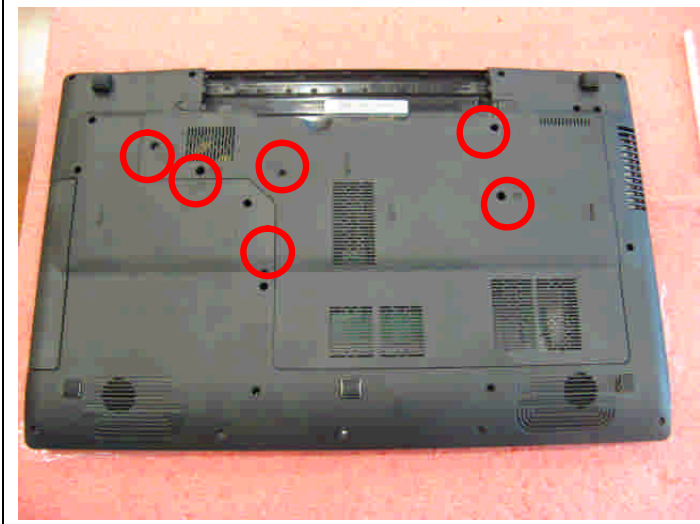


1.2: Release the “Release” button and move the battery pack base on left picture.

Component	P/N	Qty
Battery Pack	S9N-2262210-M47	1

## GE70 (MS-1756) Disassembly Guide

### 2、BOTTOM DOOR ASSY



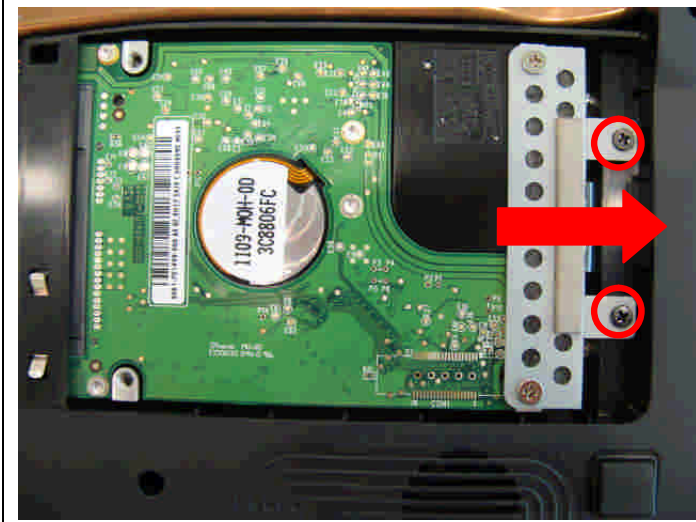
2.1 : Remove the 6 screws (M2.5\*5.5mm). Then remove the Bottom door.

**Attention: the screw driver torque is: 2.0-2.5 gf-cm**

Component	P/N	Qty
Bottom door	E2P-751J211-P89	1
Screw	E43-1255501-H29	6

# GE70 (MS-1756) Disassembly Guide

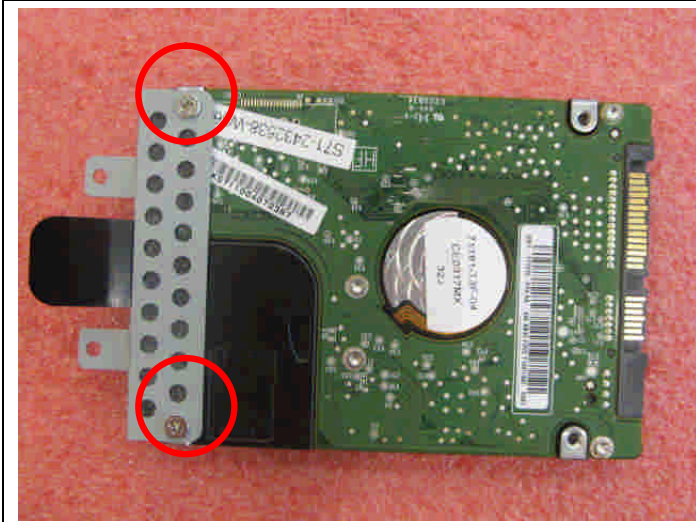
## 3、 HDD MODULE



3.1: Remove the 2 screws (M2.5\*5.5mm); then remove the HDD Module according to the direction as pic shows.

**Attention: the screw driver torque is 2.0-2.5Kgf-cm**

Component	P/N	Qty
Screw	E43-1255501-H29	2



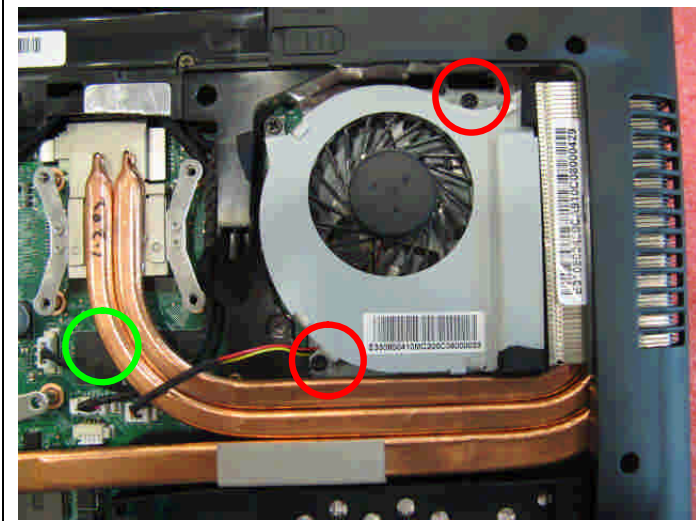
3.2: Remove the 2 screws (M3\*4mm) that stabilize the HDD bracket, then remove the HDD bracket.

**Attention: the screw driver torque is 3.0-3.5Kgf-cm**

Component	P/N	Qty
Screw	E43-1304009-G68	2
HDD Bracket	E2M-6G10811-A89	1
HDD Module	S71-2475704-H05	1

# GE70 (MS-1756) Disassembly Guide

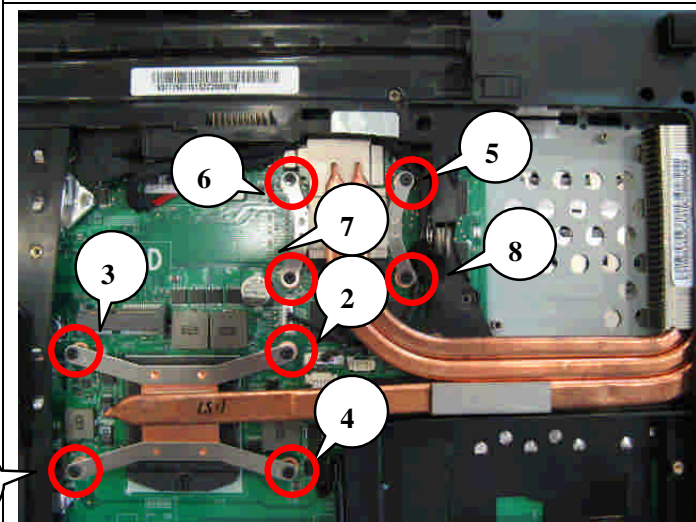
## 4、 THERMAL-KIT、 CPU 、 DRAM AND WIRELESS



4.1: Remove the 2 screw(M2.5\*5.5mm) and FAN cable, after that remove the Fan.

**Attention:** the screw driver torque is 2.0-2.5Kgf-cm

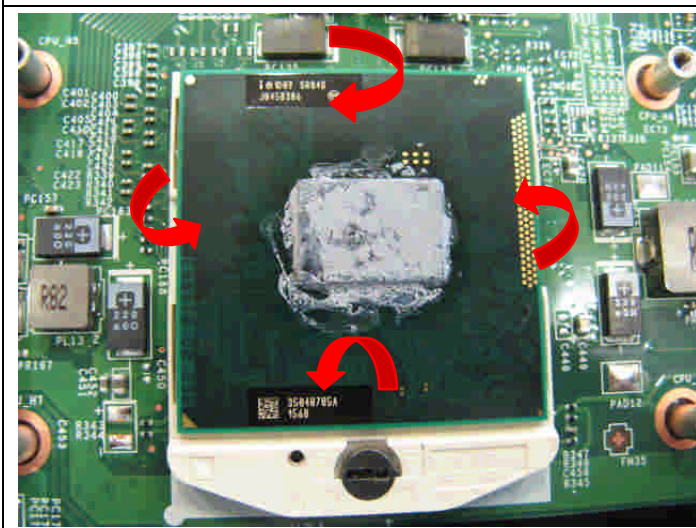
Component	P/N	Qty
Screw	E43-1255501-H29	1
FAN	E33-0800410-MC2	1



4.2: Remove the 8 screws (M2.5\*4.5mm), after that remove the Heatsink.

**Attention:** the screw driver torque is 2.0-2.5Kgf-cm

Component	P/N	Qty
Screw	E43-1254502-G68	6
Heatsink	E31-0403231-TA9	1

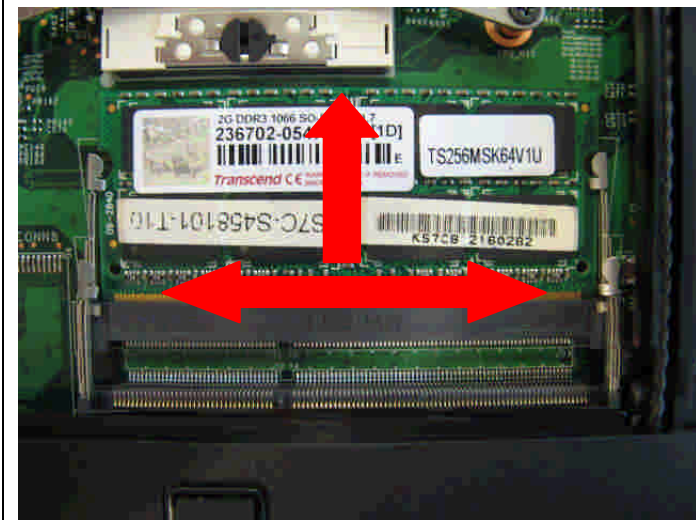


4.3: Open the CPU Slot with Screw Driver, then remove CPU Module as below.

Component	P/N	Qty
CPU	A13-2320186-I06	1

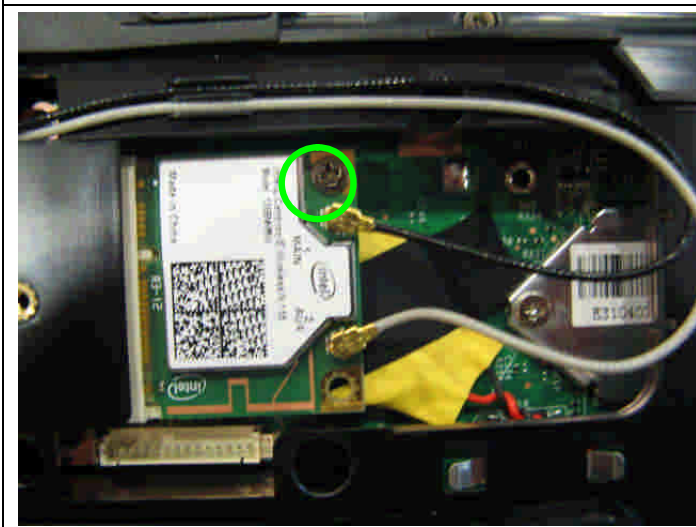
# GE70 (MS-1756) Disassembly Guide

## 4、 THERMAL-KIT、 CPU 、 DRAM AND WIRELESS



4.4: Push the two side shielding of RAM as pic shows; Then remove the RAM module according the direction as pic shows.

Component	P/N	Qty
RAM Module	S7C-S469H04-E54	1



4.5: Remove 1 screw (M2\*3.5mm); then remove the two side wireless card antenna as pic shows.

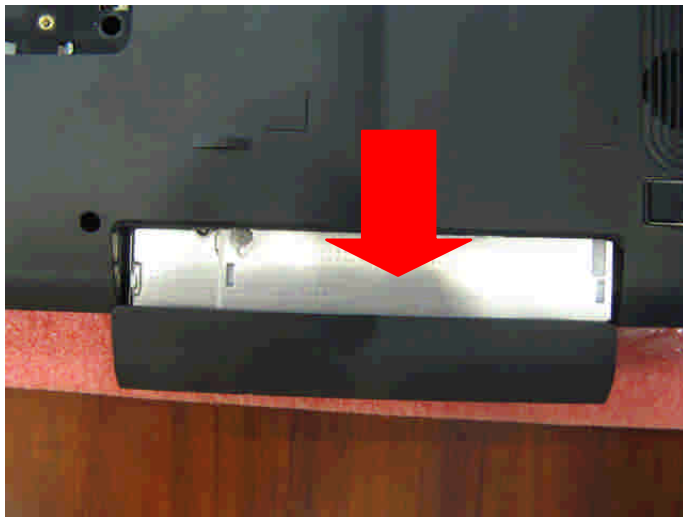
**Attention: the screw driver torque is: 1.5-2.0Kgf-cm**

Component	P/N	Qty
WLAN Module	S57-08000F0-I06	1
Screw	E43-1203501-G68	1



# GE70 (MS-1756) Disassembly Guide

## 5. ODD MODULE

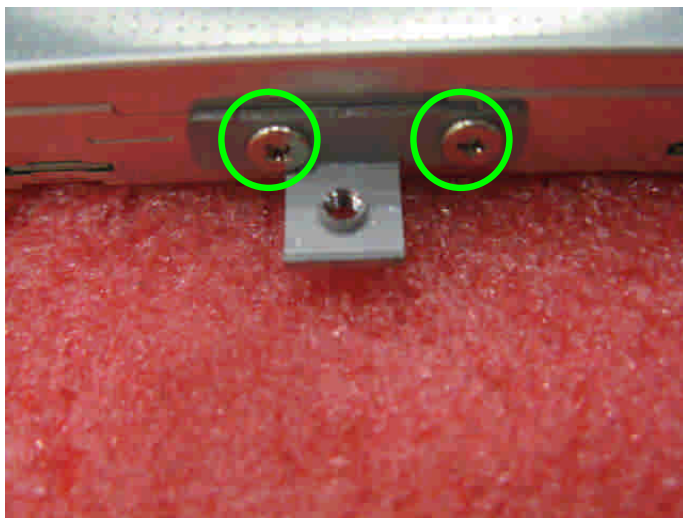


5.1: Remove the ODD Module according to the direction as pic shows.



5.2: Remove ODD Bezel as below.

Component	P/N	Qty
ODD Bezel	307-751F212-P89	1



5.3: Remove 2pcs (M2\*3mm) Screws; Then remove ODD Bracket as below.

**Attention: the screw driver torque is 1.5-2.0Kgf-cm**

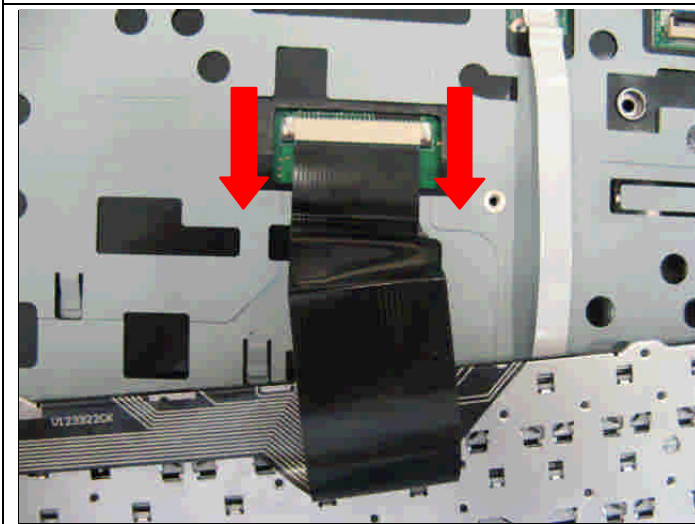
Component	P/N	Qty
Screw	E43-1203013-G68	2
ODD Bracket	E2M-6G10711-A89	1
ODD Module	S7D-2270076-T87	1

# GE70 (MS-1756) Disassembly Guide

## 6. SEPARATE UPPER CASE AND LOWER CASE

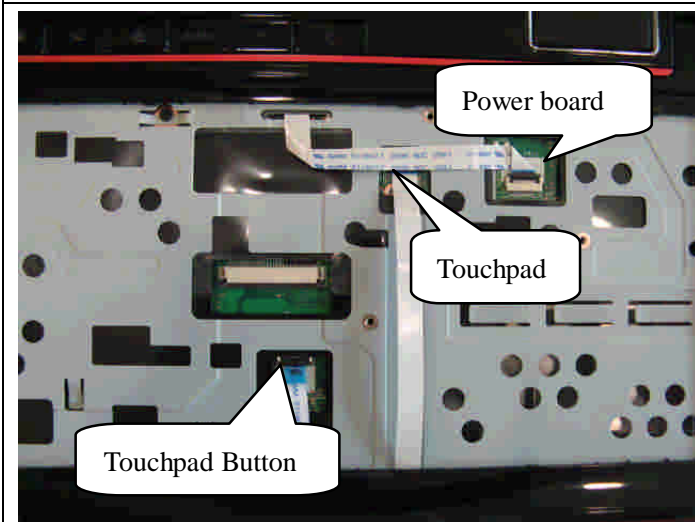


6.1: Remove the Keyboard. Firstly release the hook of the upside, then remove the upside, after that release the hook of the two sides, then remove the two sides, last remove down side.



6.2 : Firstly push connector according to the direction as pic shows; then remove the cable.

Component	P/N	Qty
Keyboard	S1N-3EUS231-SA0	1

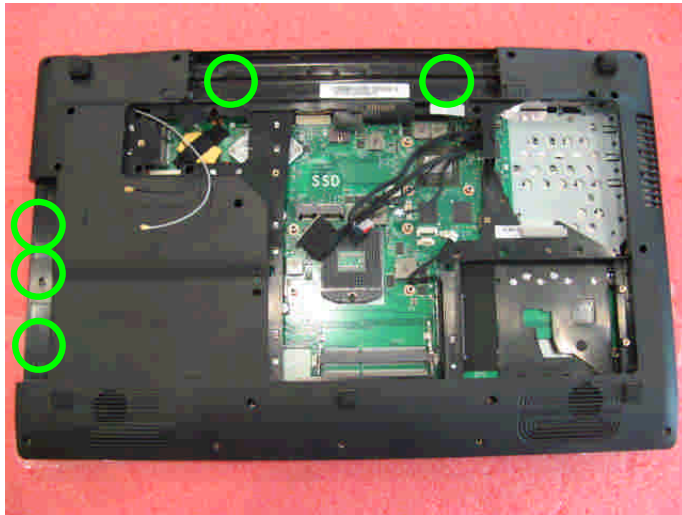


6.3: Firstly open the connector according to the direction as pic shows; then remove the Power board and Touchpad cable.



# GE70 (MS-1756) Disassembly Guide

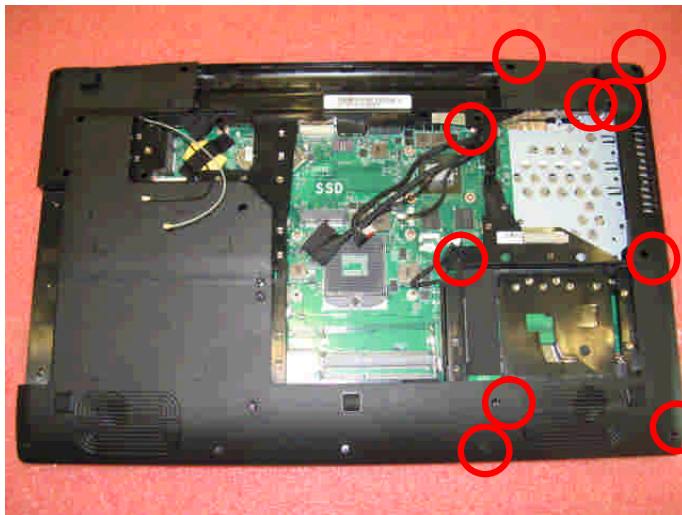
## 6. SEPARATE UPPER CASE AND LOWER CASE



6.4: Remove 5 screws (M2\*3.5mm).

Attention: the screw driver torque is 1.5-2.0Kgf-cm

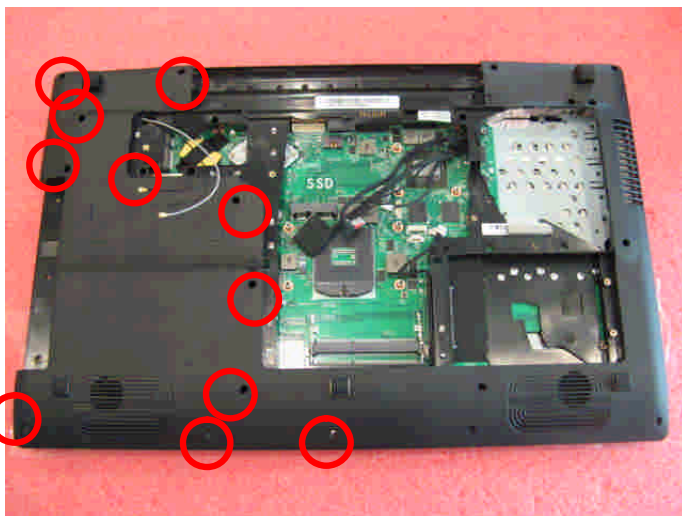
Component	P/N	Qty
Screw	E43-1203501-G68	5



6.5: Remove 10 screws (M2.5\*5.5mm).

Attention: the screw driver torque is 2.0-2.5Kgf-cm

Component	P/N	Qty
Screw	E43-1255501-H29	11



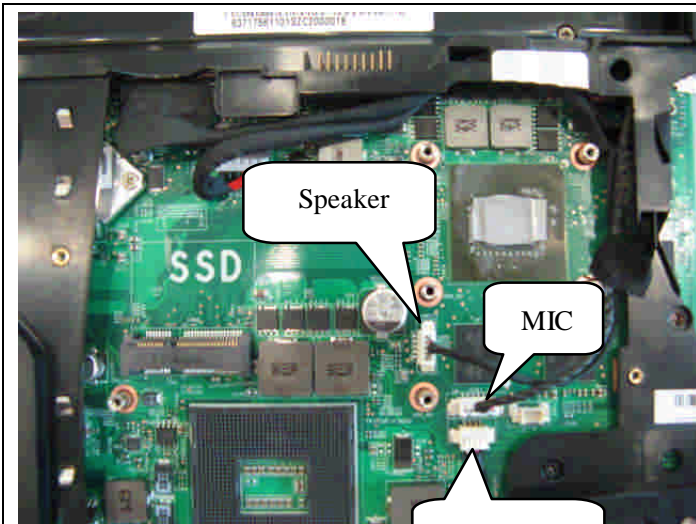
6.6: Remove the 11 screws (M2.5\*5.5mm).

Attention: the screw driver torque is 2.0-2.5Kgf-cm

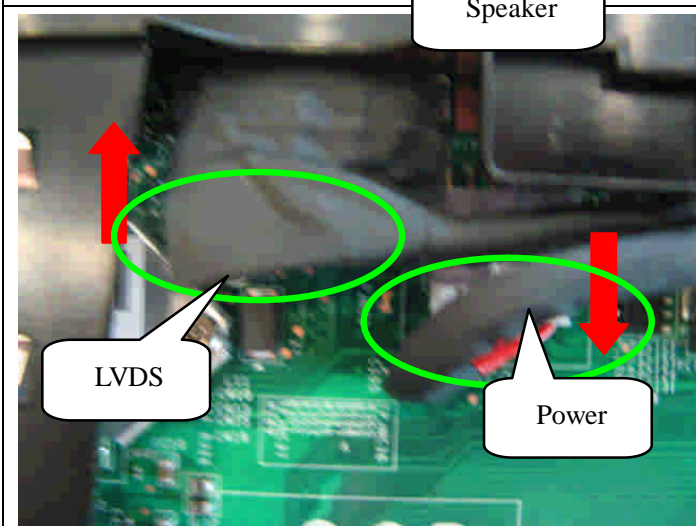
Component	P/N	Qty
Screw	E43-1255501-H29	12

# GE70 (MS-1756) Disassembly Guide

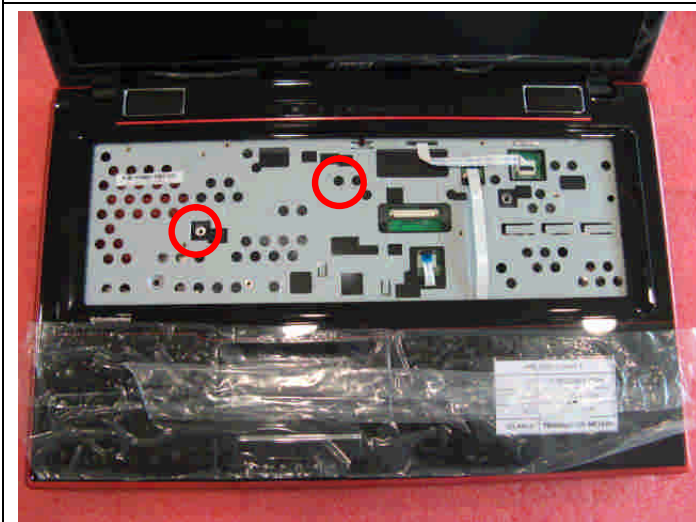
## 6. SEPARATE UPPER CASE AND LOWER CASE



6.7: Remove the speaker and MIC cable.



6.8: Remove the LVDS and power cable as pic shows.



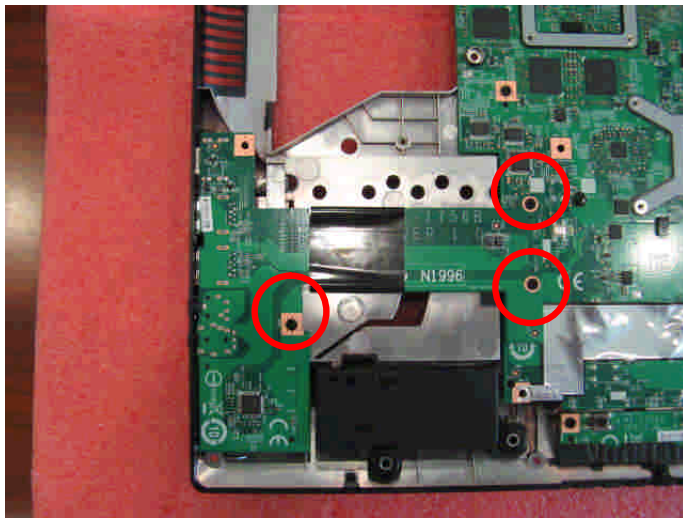
6.9: Remove the 2 screws (M2.5\*5.5mm). then remove the upper case.

**Attention: the screw driver torque is 2.0-2.5Kgf-cm**

Component	P/N	Qty
Screw	E43-1255501-H29	2

# GE70 (MS-1756) Disassembly Guide

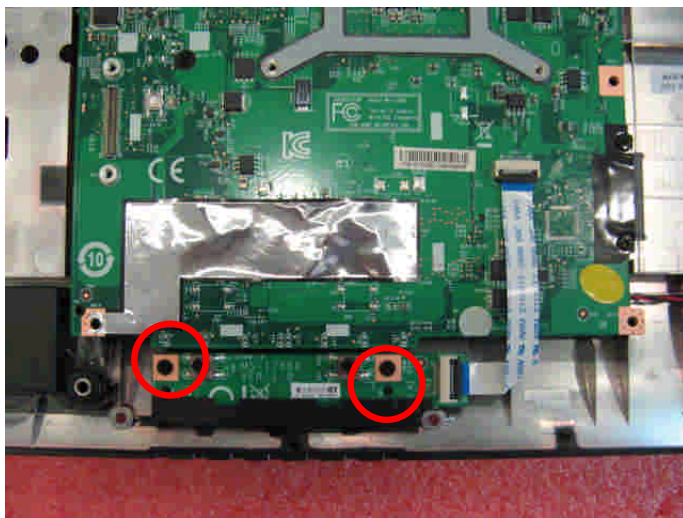
## 7、 LOWER CASE ASSY



7.1 : Remove the 3screws (M2.5\*4.5mm).then remove the Left I/O board.

Attention: the screw driver torque is 2.0-2.5Kgf-cm

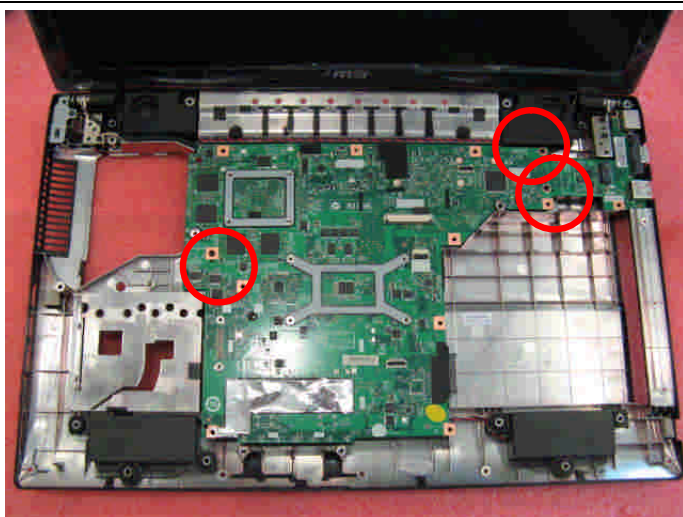
Component	P/N	Qty
screw	E43-1254502-G68	3
Left I/O board	607-1756B-01S	1



7.2: Remove the FFC, then remove the 2screws (M2.5\*4.5mm).last remove the T/P board.

Attention: the screw driver torque is 2.0-2.5Kgf-cm

Component	P/N	Qty
screw	E43-1254502-G68	2
T/P board	607-1756D-01S	1



7.3 : Remove the 3screws (M2.5\*4.5mm).then remove the main board.

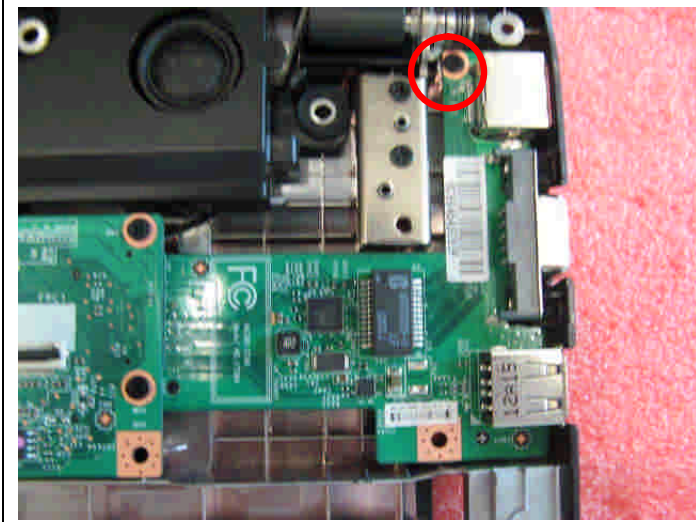
Attention: the screw driver torque is 2.0-2.5Kgf-cm

Component	P/N	Qty
screw	E43-1254502-G68	3
Main board	607-17561-01S	1



# GE70 (MS-1756) Disassembly Guide

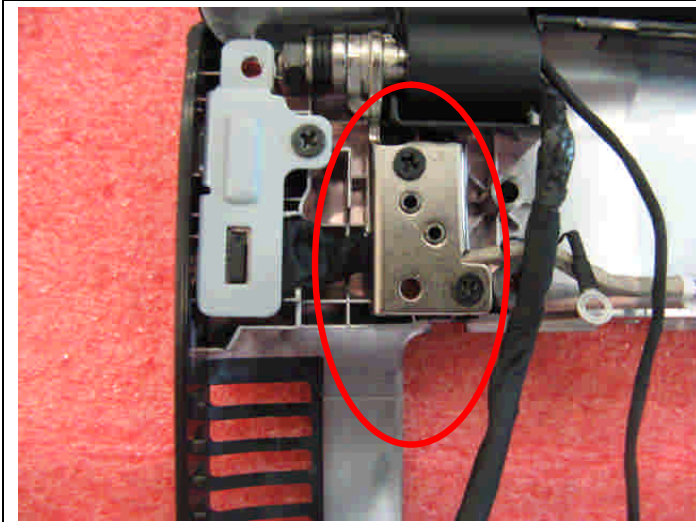
## 7、 LOWER CASE ASSY



7.4: Remove the Bluetooth cable and 1 screw (M2.5\*4.5mm); then remove the Right I/O board.

**Attention: the screw driver torque is: 2.0-2.5Kgf-cm**

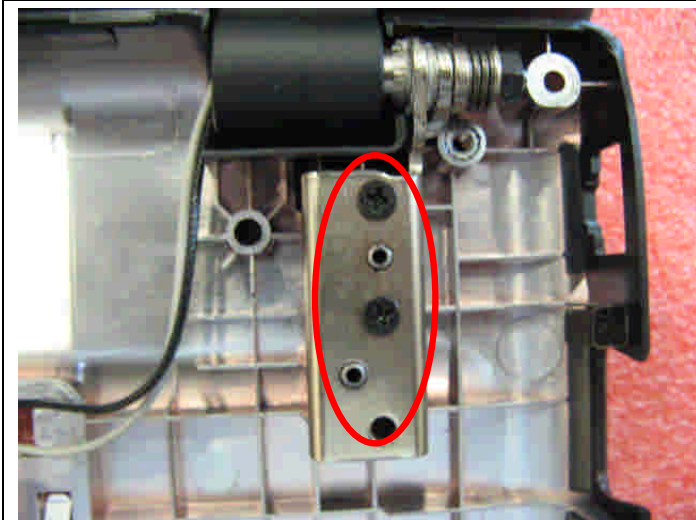
Component	P/N	Qty
Right I/O board	607-1756A-01S	1
Screw	E43-1254502-G68	1



7.5: Remove the 2 screws (M2.5\*5.5mm) that stabilize the left LCD hinge.

**Attention: the screw driver torque is 2.5-3.0Kgf-cm**

Component	P/N	Qty
Screw	E43-1255501-H29	2



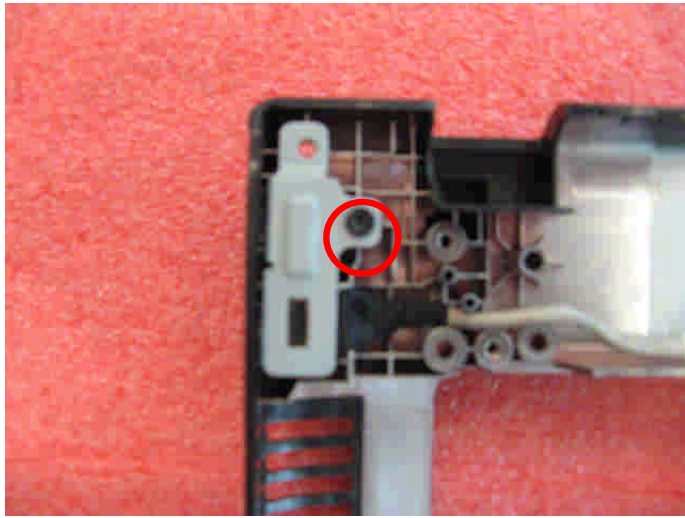
7.6: Remove the 2 screws (M2.5\*5.5mm) that stabilize the right LCD hinge.

**Attention: the screw driver torque is 2.5-3.0Kgf-cm**

Component	P/N	Qty
Screw	E43-1255501-H29	2

# GE70 (MS-1756) Disassembly Guide

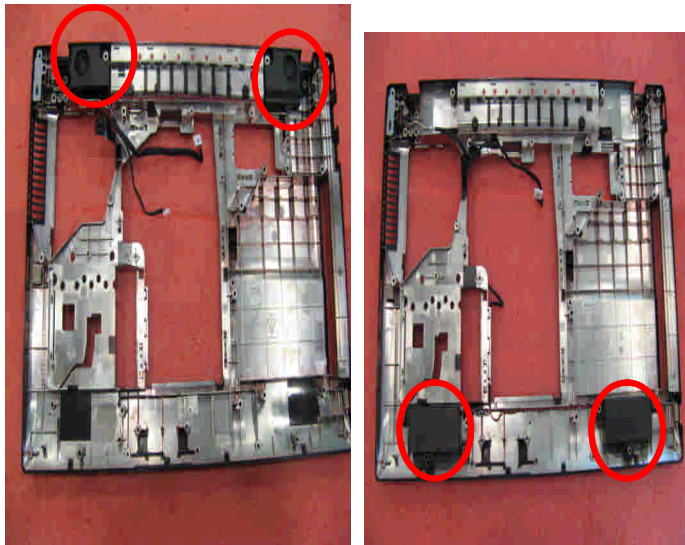
## 7、 LOWER CASE ASSY



7.7 : Remove the 1screw (M2.5\*5.5mm), then remove the power conn.

**Attention: the screw driver torque is 2.5-3.0Kgf-cm**

Component	P/N	Qty
Screw	E43-1255501-H29	1

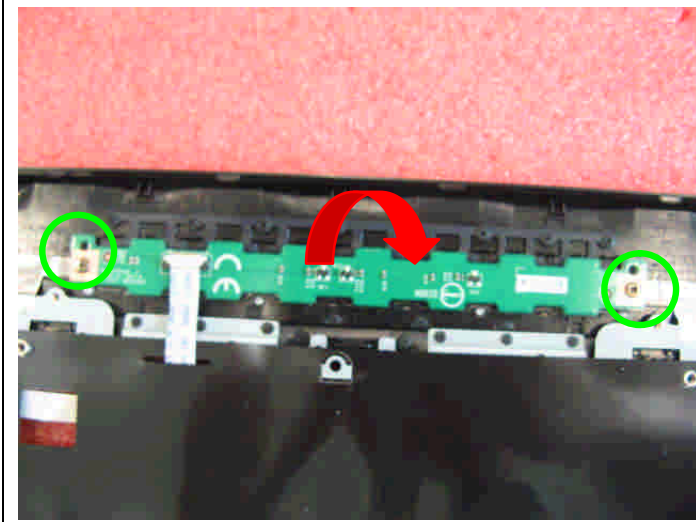


7.8 Remove the speaker.

Component	P/N	Qty
Speaker	S33-A020261-F33	1

# GE70 (MS-1756) Disassembly Guide

## 8. UPPER CASE ASSY



8.1: Remove 2 screws (M2\*3.5mm), then remove the Power board.

Attention: the screw driver torque is 1.5-2.0Kgf-cm

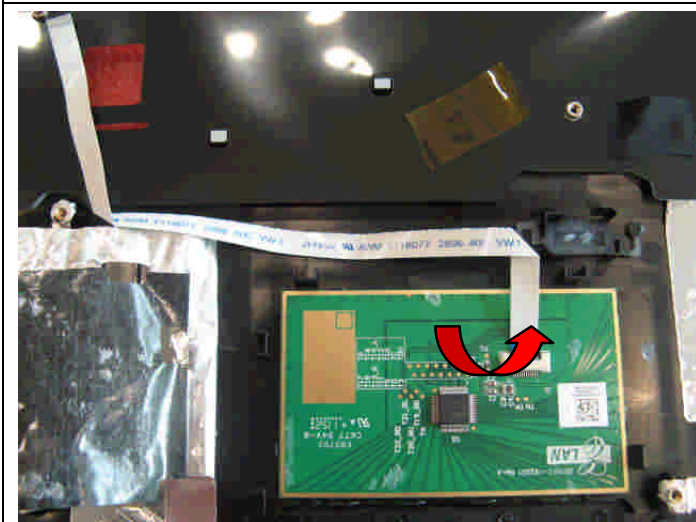
Component	P/N	Qty
screw	E43-1203501-G68	2
Power board	607-1756C-01S	1



8.2: Remove 1 screw (M2\*3.5mm), then remove the USB board.

Attention: the screw driver torque is 1.5-2.0Kgf-cm

Component	P/N	Qty
screw	E43-1203501-G68	1
USB board	607-1756E-01S	1



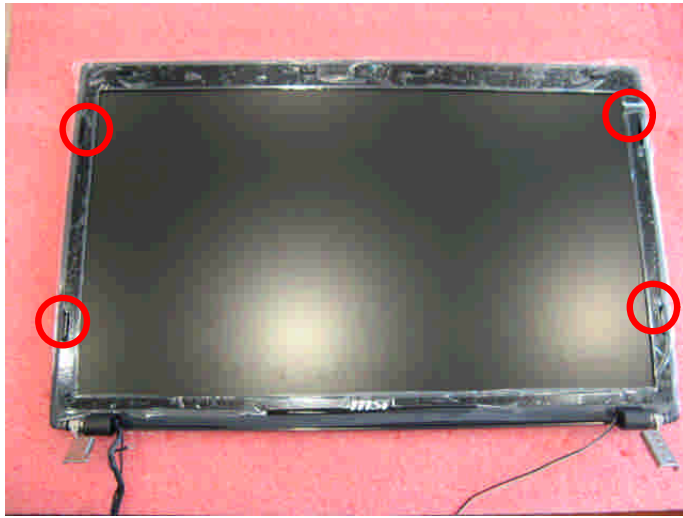
8.3: Release the connector that stabilize the T/P Cable, then remove the T/P module.

Component	P/N	Qty
Upper Case	307-756C211-P89	1
Touchpad Module	S78-3700610-E47	1



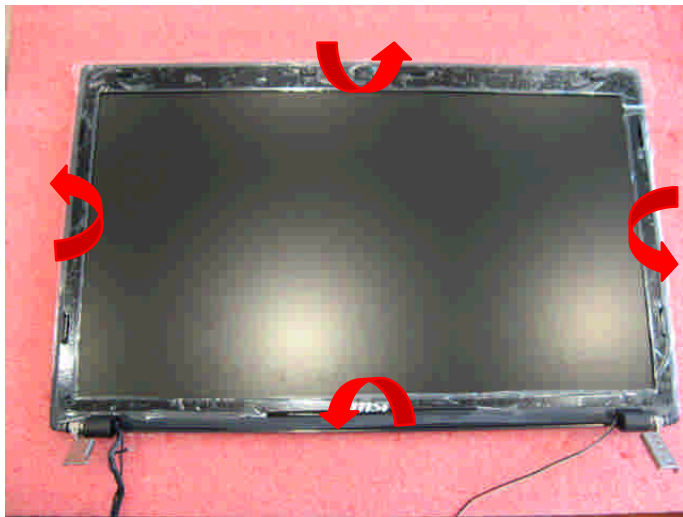
# GE70 (MS-1756) Disassembly Guide

## 9、 LCD MODULE ASSY



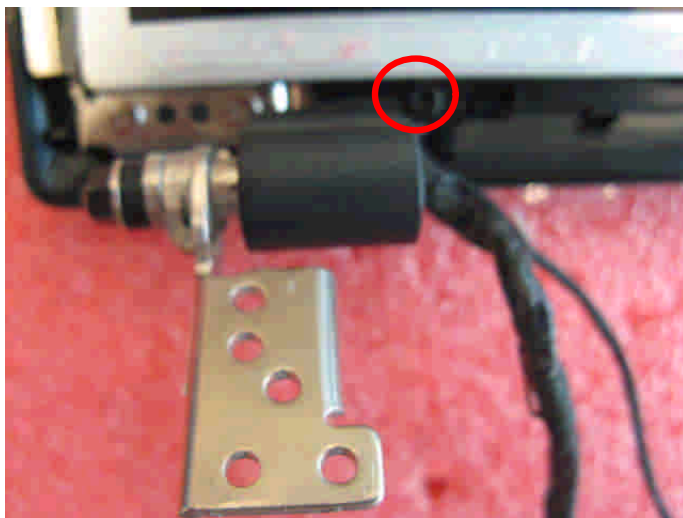
9.1: Remove the 4 cover rubber.

Component	P/N	Qty
Rubber	E2Y-6G10511-Y40	4



9.2: When remove the LCD bezel, should begin from the upside, then the two sides to downside.

Component	P/N	Qty
LCD Bezel	307-751B213-U22	1



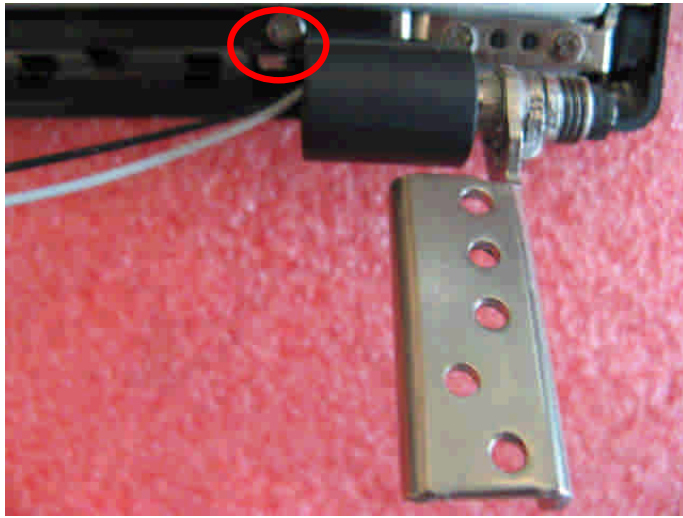
9.3 : Remove the 1 screw (M2.5\*4mm), then remove the left hinge cap.

**Attention: the screw driver torque is 1.5-2.0Kgf-cm**

Component	P/N	Qty
HINGE CAP_L	E2P-7510812-P89	1
screw	E43-1254502-G68	1

# GE70 (MS-1756) Disassembly Guide

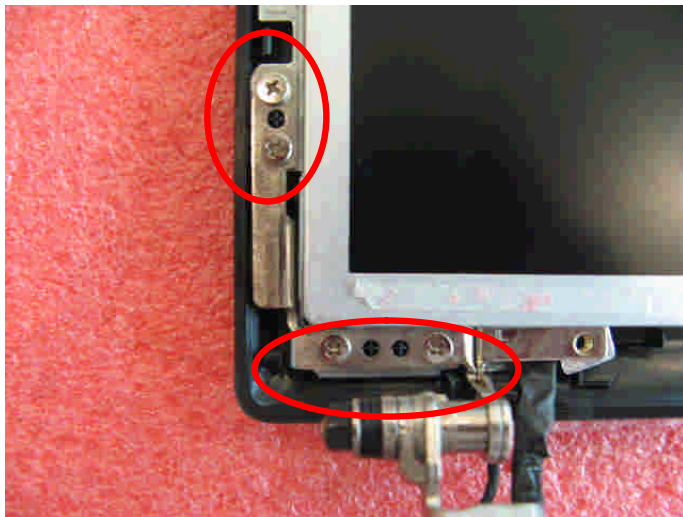
## 9、 LCD MODULE ASSY



9.4: Remove the 1 screw (M2.5\*4.5mm), then remove the right hinge cap.

**Attention: the screw driver torque is 1.5-2.0Kgf-cm**

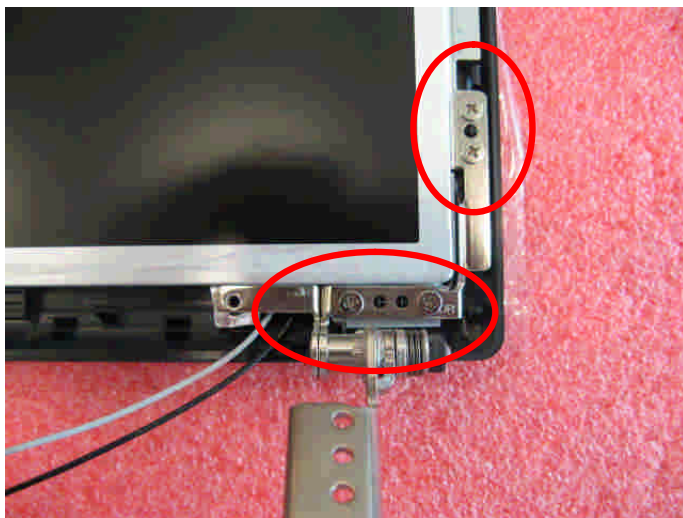
Component	P/N	Qty
HINGE CAP_R	E2P-7510912-P89	1
screw	E43-1254502-G68	1



9.5: Remove the 4 screws (M2.5\*4.5mm) that stabilize the left hinge.

**Attention: the screw driver torque is 2.8-3.2Kgf-cm**

Component	P/N	Qty
screw	E43-1254502-G68	4
Hinge L	E2M-7510412-G60	1



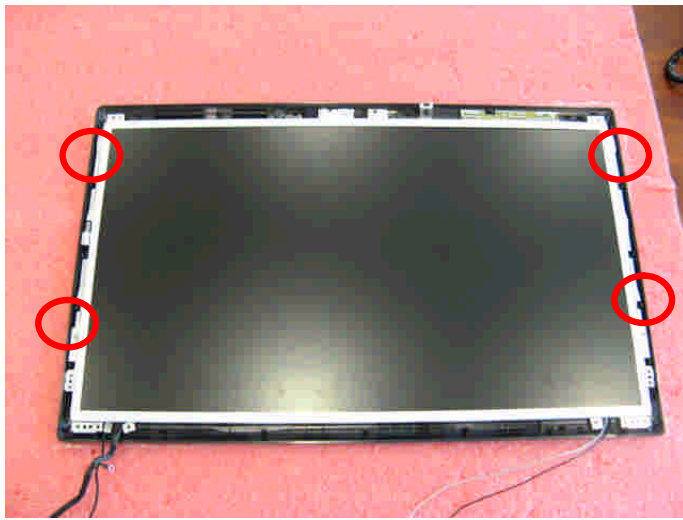
9.6: Remove the 4 screws (M2.5\*4.5mm) that stabilize the right hinge.

**Attention: the screw driver torque is 2.8-3.2Kgf-cm**

Component	P/N	Qty
screw	E43-1254502-G68	4
Hinge R	E2M-7510512-G60	1

## GE70 (MS-1756) Disassembly Guide

### 9、 LCD MODULE ASSY



9.7: Remove the 4 screws (M2.5\*4.5mm), then remove the camera cable and remove the display module from LCD cover.

**Attention: the screw driver torque is 2.8-3.2Kgf-cm**

Component	P/N	Qty
Screw	E43-1254502-G68	4

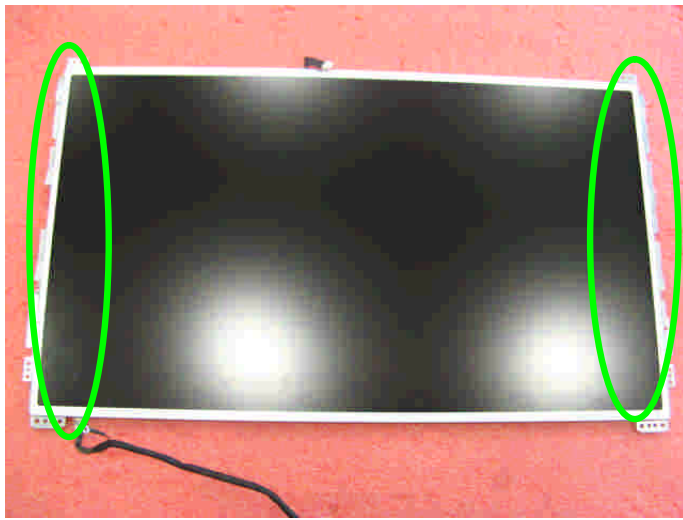


9.8: Remove the LVDS cable from display module.

Component	P/N	Qty
LVDS Cable	K19-3040026-H39	1

## GE70 (MS-1756) Disassembly Guide

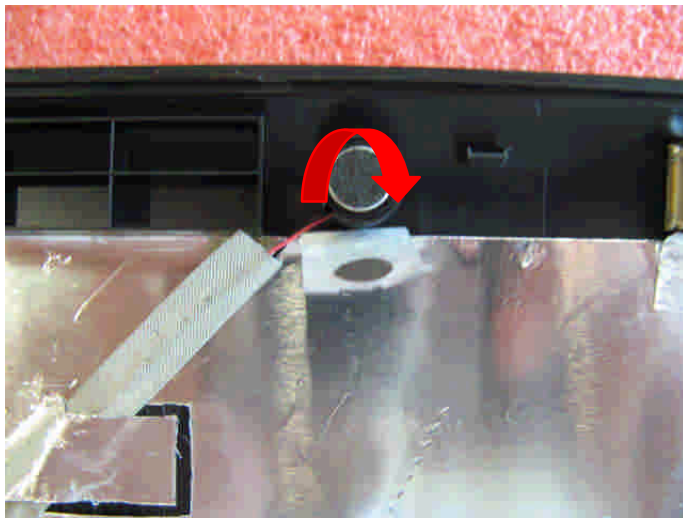
### 9、 LCD MODULE ASSY



9.9: Remove the 8 screws (M2\*3mm)

Attention: the screw driver torque is 1.5-2.0Kgf-cm

Component	P/N	Qty
Display Module	S1J-7E0A004-CC1	1
LCD BRACKET-L	E2M-7510611-C22	1
LCD BRACKET-R	E2M-7510711-C22	1
Screw	E43-1203013-G68	8

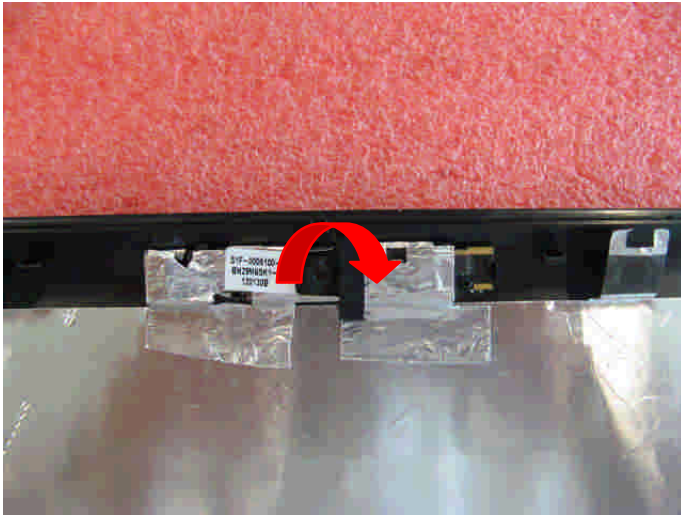


9.10: Remove the CMOS camera module according to the sequence as pic shows.

Component	P/N	Qty
MIC Module	S34-2101240-N44	1

## GE70 (MS-1756) Disassembly Guide

### 9、 LCD MODULE ASSY



9.11: Remove the CMOS camera module according to the sequence as pic shows.

Component	P/N	Qty
Camera Module	S1F-0005100-B36	1

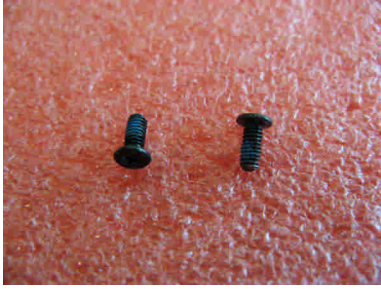
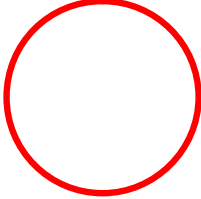

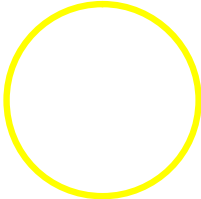

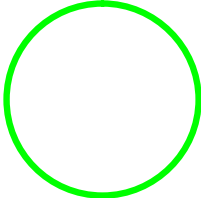

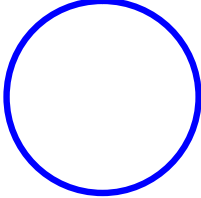


9.12: Remove the WIRELESS Antenna board from LCD Cover.

Component	P/N	Qty
Antenna	S79-1801280-V03	1
LCD Cover	307-756A211-P89	1



## GE70 (MS-1756) screws specification

Photo	Screw specification	Label
	(M2.5*L5.5MM)black	
	(M2.5*L4.5MM)white	
	(M2*L3MM) black	
	(M2*L3.5MM) black	



## GE70 (MS-1756)screws specification

■ 1、BOTTOM ASSY total 24 pcs screws

■ specification:

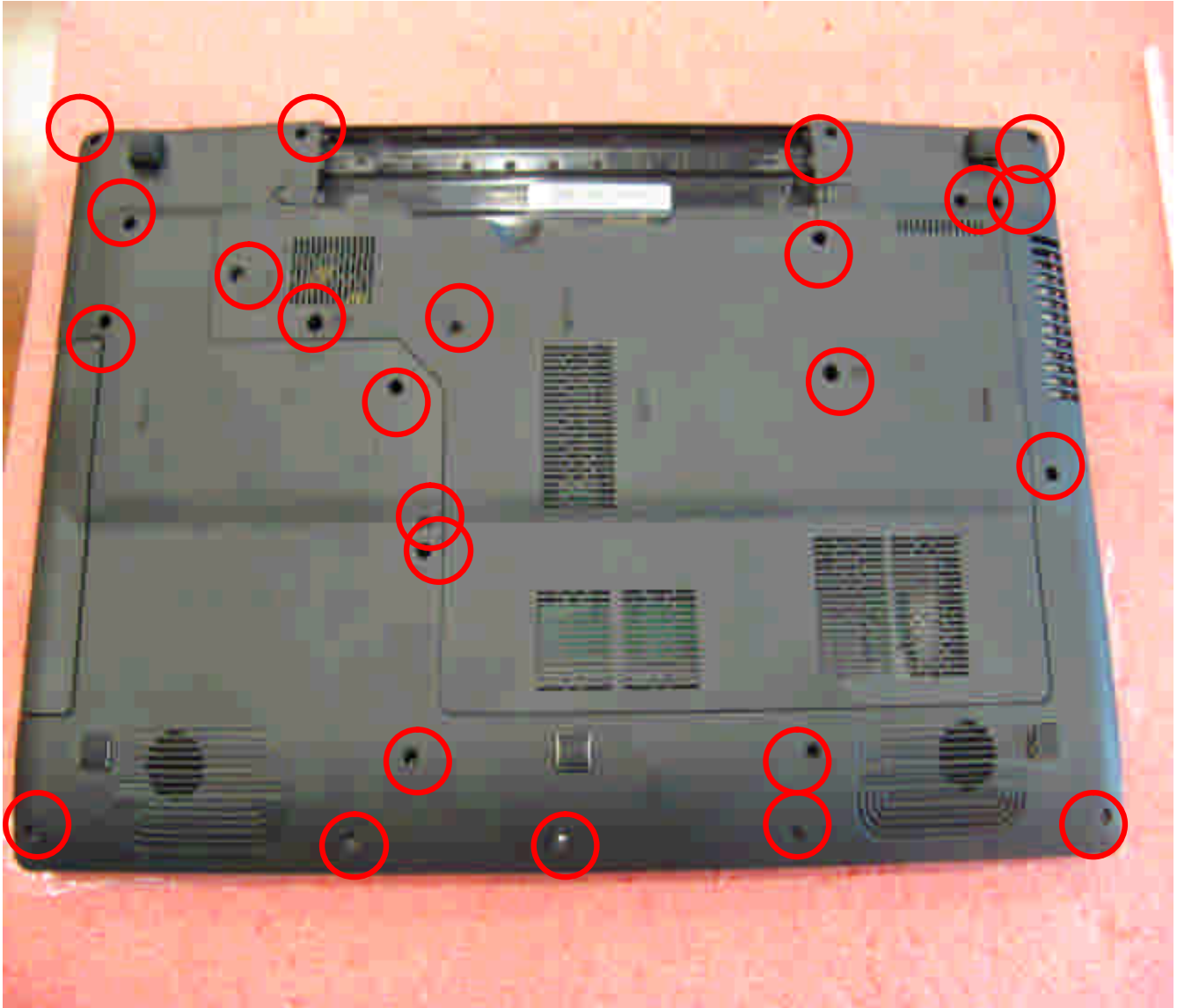
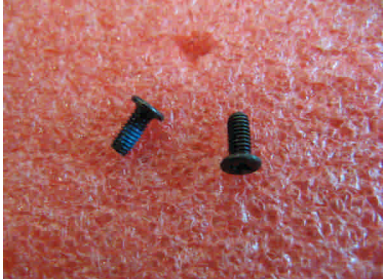
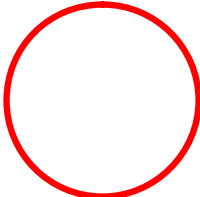


Photo	Screw specification	label
	(M2.5*L5.5MM) black	

## GE70 (MS-1756)screws specification

■ 2、THERMAL-KIT total 8pcs screws

■ specification:

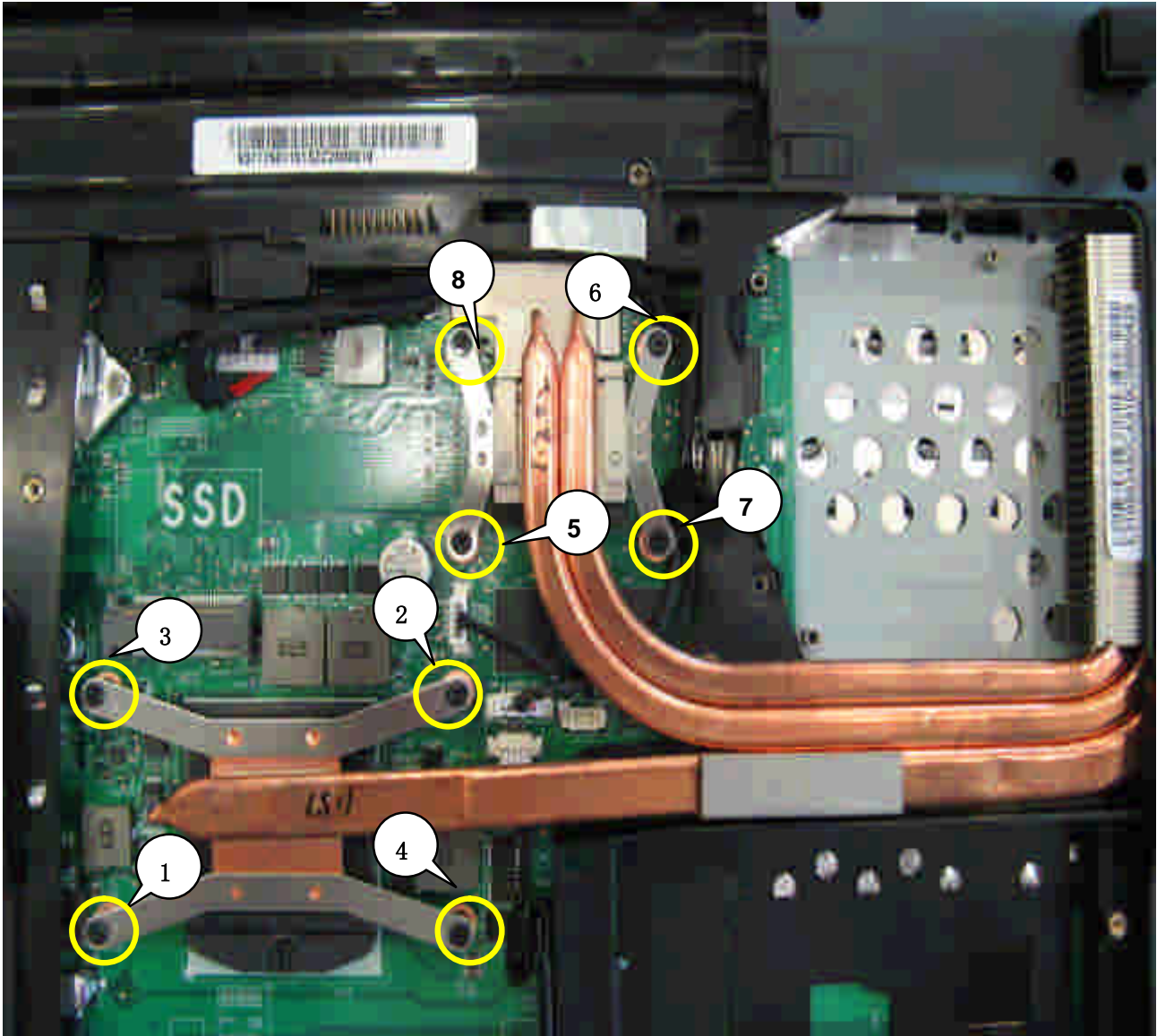

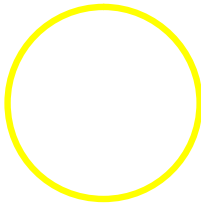

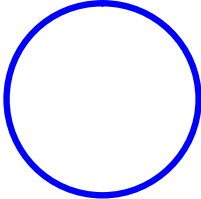


Photo	Screw specification	label
	(M2.5*L4.5MM) black	

## GE70 (MS-1756)screws specification

- 3、 WIRELESS CARD ASSY total 1pcs screw
- specification:



Photo	Screw specification	label
	(M2*L3.5MM) black	



## GE70 (MS-1756)screws specification

- 4、NB total 3 pcs screws
- specification:

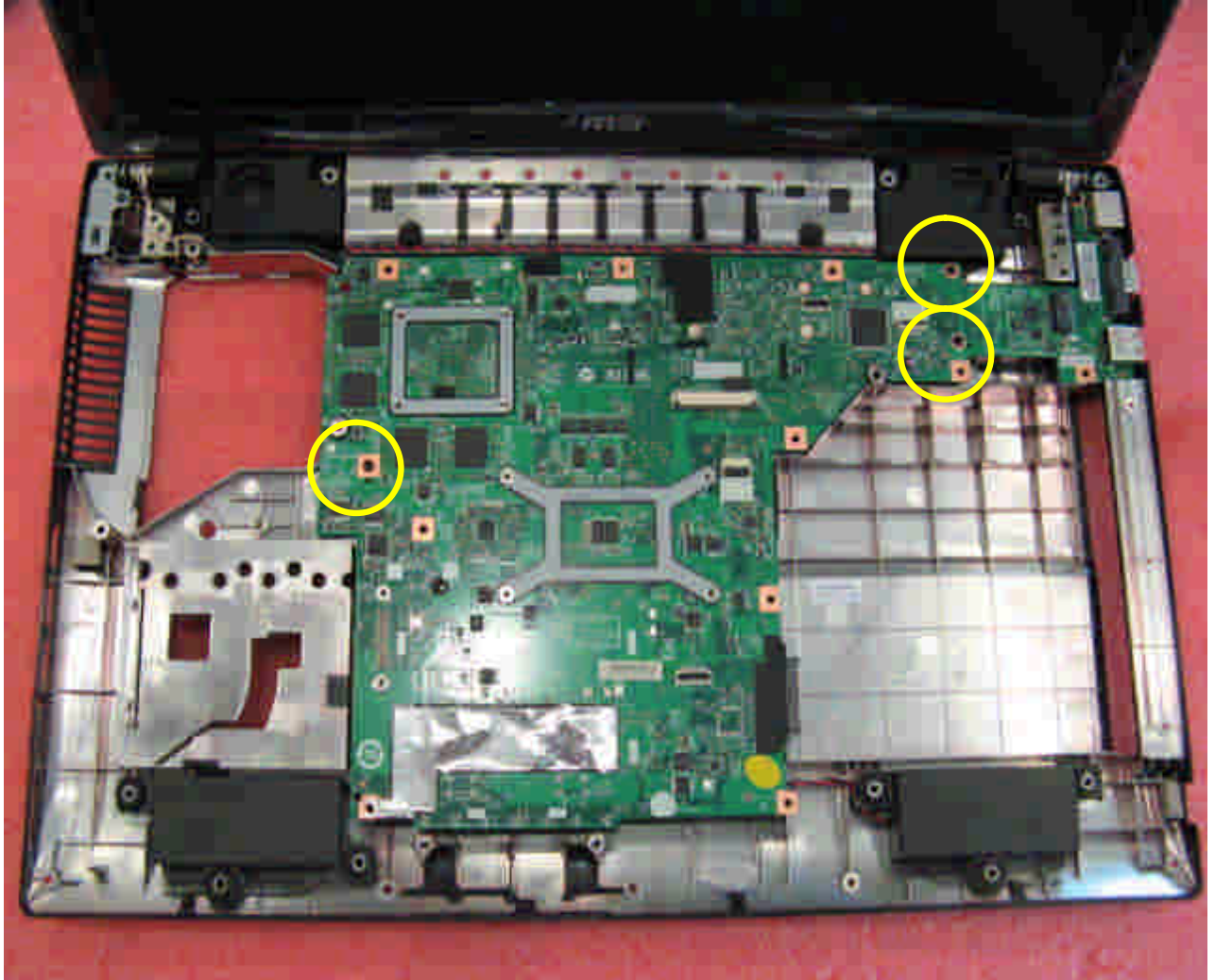

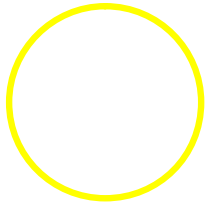


Photo	Screw specification	label
	(M2.5*L4.5MM)black	

## GE70 (MS-1756)screws specification

- 5、LCD HINGE ASSY total 4pcs screws
- specification:

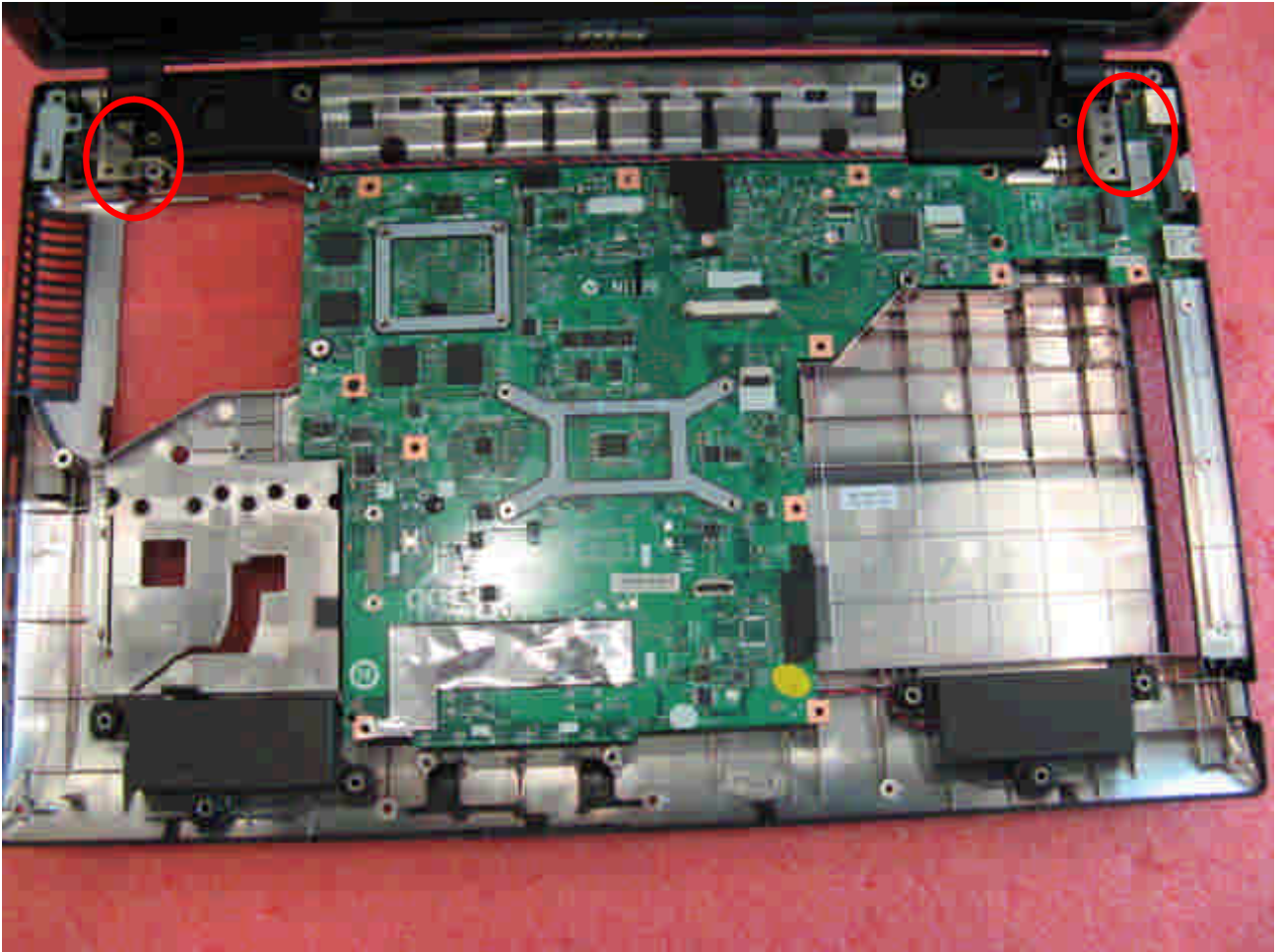

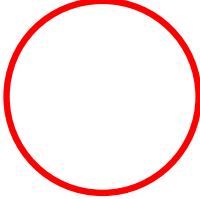


Photo	Screw specification	Label
	(M2.5*L5.5MM)black	

## GE70 (MS-1756)screws specification

■ 6、LCD Hinge Cap ASSY total 2pcs screws

■ specification:

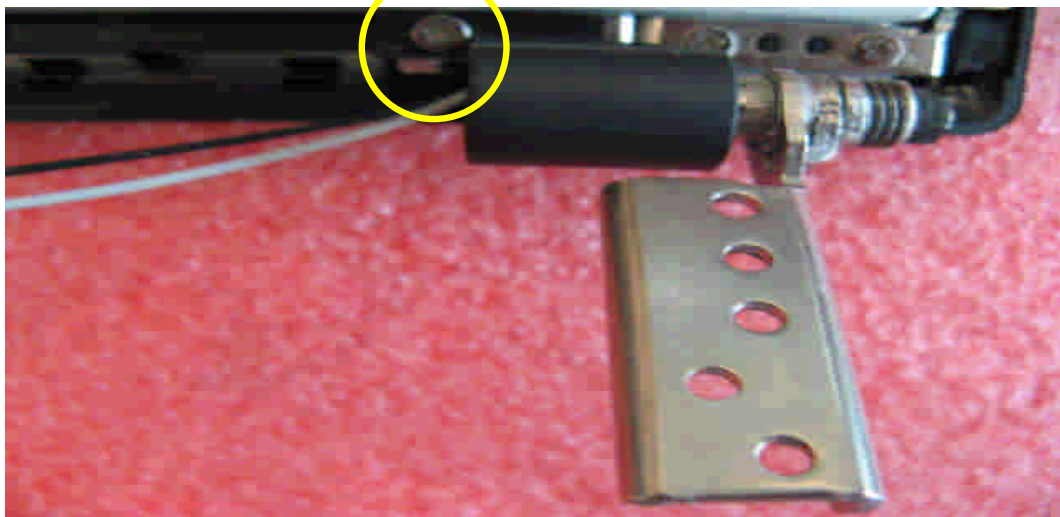
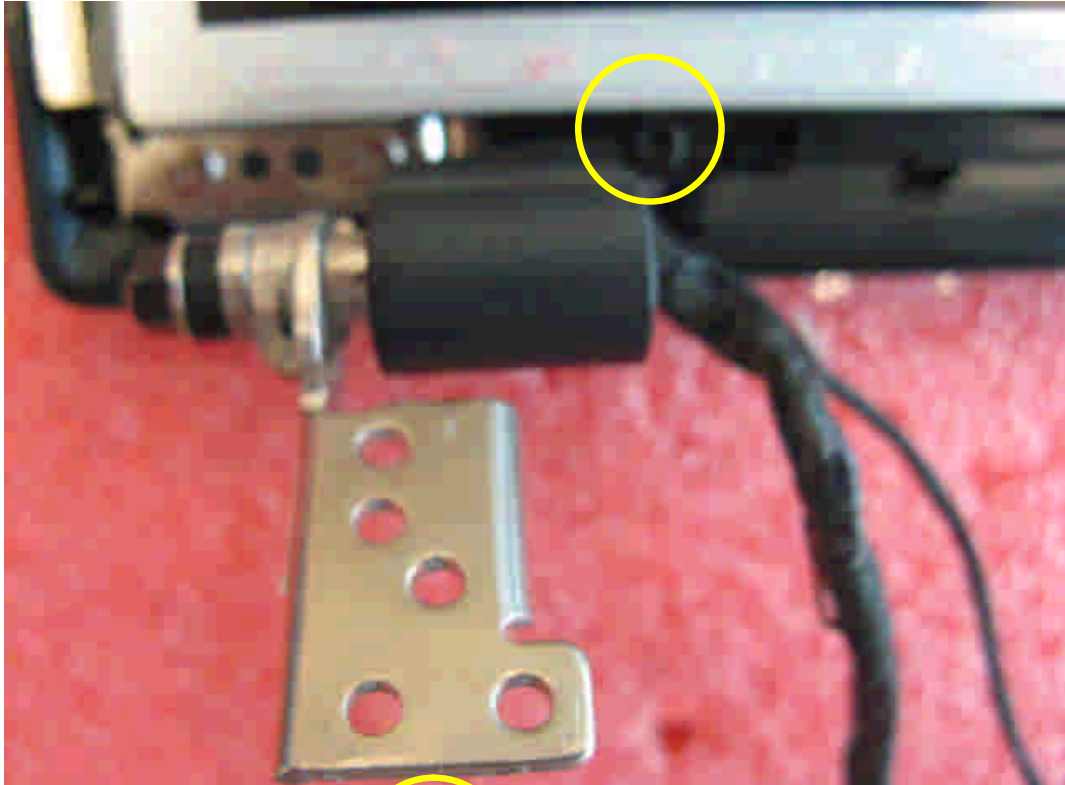

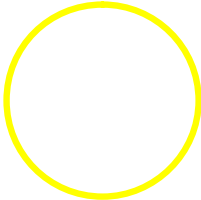


Photo	Screw specification	label
	(M2.5*L4.5MM)black	


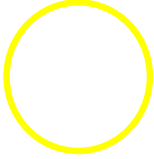



## GE70 (MS-1756)screws specification

■ 7、LCD MODULE ASSY total 20pcs screws

■ specification:



Photo	Screw specification	label
	(M2.5*L4.5MM)white	
	(M2*L3MM) black	