

SX20 (MS-1161) Disassembly Guide

- 1、 MIDDLE COVER DIS
- 2、 KEYBOARD \ UPPER CASE DIS
- 3、 CABLE \ BATTERY DIS
- 4、 DRAM \ FAN \ HEATSINK \ SPEAKER MODULE DIS
- 5、 DRAM MODULE \ SSD CARD \ MB MODULE DIS
- 6、 LAN BOARD \ ANTENNA DIS
- 7、 LCD MODULE DIS

SX20 (MS-1161) Disassembly Guide

1、 MIDDLE COVER DIS



1.1: Remove 1 pcs M2*6 Screw and 3 pcs M2*5 Screw.

Co ponent	P/N	Qty
Middle Cover	307-161E111-P89	1
Screw	E43-1206001-H29	1
Screw	E43-1205006-H 9	3



1.2: Lock MB Switch.

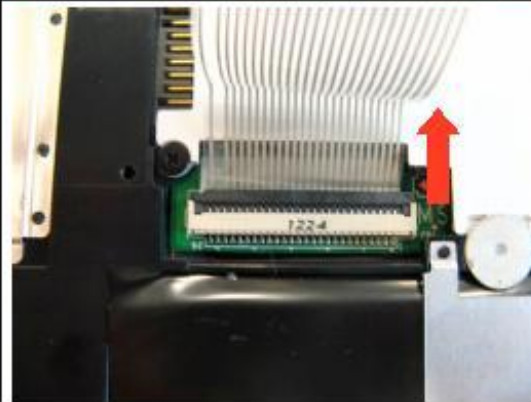
SX20 (MS-1161) Disassembly Guide

2. KEYBOARD \ UPPER CASE DIS



2.1: Disassemble the Keyboard.

Component	P/N	Qty
Keyboard	S1N-1UU.S3Q1-SA0	1



2.2: Disassemble the Keyboard cable.



2.3: Disassemble the Upper Case and Lower Case; then Remove 10 pcs M2*4 Screws and Remove 1 pcs M2*6 Screw.

Attention: the screw driver torque is 1.5-2.0Kgf-cm

Component	P/N	ty
Upper Case	307-161C311-P89	1
Screw	E43-1206001-H29	1
Screw	E43-1204005-H29	1

SX20 (MS-1161) Disassembly Guide

3. CABLE \ BATTERY DIS

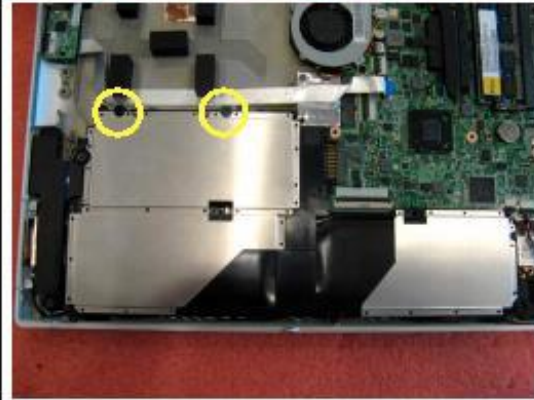
	<p>3.1: Remove 4 pcs M2*4 Screws and Remove 1 pcs M2*3 Screw.</p> <p>Attention: the screw driver torque is 1.5-2.0Kgf-cm</p> <table border="1" data-bbox="824 682 1310 798"><thead><tr><th>Component</th><th>P/N</th><th>Qty</th></tr></thead><tbody><tr><td>Screw</td><td>E43-1204005-H29</td><td>4</td></tr><tr><td>Screw</td><td>E43-1203003-H29</td><td>1</td></tr></tbody></table>	Component	P/N	Qty	Screw	E43-1204005-H29	4	Screw	E43-1203003-H29	1
Component	P/N	Qty								
Screw	E43-1204005-H29	4								
Screw	E43-1203003-H29	1								
	<p>3.2: Disassemble the LCD Module.</p>									
	<p>3.3: Disconnect LAN Cable.</p>									

SX20 (MS-1161) Disassembly Guide

3. CABLE \ BATTERY DIS



3.4. Connect LVDS Cable.






3.5. Disassemble the Battery; then Remove 2 pcs M2*4 Screws.

Attention: the screw driver torque is 1.5-2.0Kgf-cm

Component	P/N	Qty
Battery	S9N-493F100-SE3	1
Screw	E43-1204005-H29	2




SX20 (MS-1161) Disassembly Guide

4. DRAM \ FAN \ HEATSINK \ SPEAKER MODULE DIS

	<p>4.1: Remove DRAM Module.</p> <table border="1" data-bbox="824 611 1310 684"> <thead> <tr> <th>Component</th> <th>P/N</th> <th>Qty</th> </tr> </thead> <tbody> <tr> <td>DRAM Module</td> <td>S7C-S469H04- 54</td> <td>1</td> </tr> </tbody> </table>	Component	P/N	Qty	DRAM Module	S7C-S469H04- 54	1									
Component	P/N	Qty														
DRAM Module	S7C-S469H04- 54	1														
	<p>4.2: Remove Heatsink and fan ,then Disconnect Fan cable ,Remove 3 pcs M2.5*4 Screws and 2 pcs M2*4 Screws.</p> <p><i>Attention: the screw driver torque is 1.5-2.0Kgf-cm</i></p> <table border="1" data-bbox="824 1087 1310 1276"> <thead> <tr> <th>Component</th> <th>P/N</th> <th>Qty</th> </tr> </thead> <tbody> <tr> <td>Heatsink</td> <td>E31-0803690-CA9</td> <td>1</td> </tr> <tr> <td>FAN</td> <td>E33-0800420-MC2</td> <td>1</td> </tr> <tr> <td>Screw</td> <td>E43-1254002-G68</td> <td>3</td> </tr> <tr> <td>Screw</td> <td>E43-1204005-H29</td> <td>2</td> </tr> </tbody> </table>	Component	P/N	Qty	Heatsink	E31-0803690-CA9	1	FAN	E33-0800420-MC2	1	Screw	E43-1254002-G68	3	Screw	E43-1204005-H29	2
Component	P/N	Qty														
Heatsink	E31-0803690-CA9	1														
FAN	E33-0800420-MC2	1														
Screw	E43-1254002-G68	3														
Screw	E43-1204005-H29	2														
	<p>4.3: Disassemble the Speaker Module and MIC Module; then Remove 1 pcs M2*4 Screw.</p> <p><i>Attention: the screw driver torque is 1.5-2.0Kgf-cm</i></p> <table border="1" data-bbox="824 1491 1310 1644"> <thead> <tr> <th>Component</th> <th>P/N</th> <th>Qty</th> </tr> </thead> <tbody> <tr> <td>Speaker Module</td> <td>S33-A000240-F33</td> <td>1</td> </tr> <tr> <td>MIC Module</td> <td>S34-2101380-K03</td> <td>1</td> </tr> <tr> <td>Screw</td> <td>E43-1204005-H29</td> <td>1</td> </tr> </tbody> </table>	Component	P/N	Qty	Speaker Module	S33-A000240-F33	1	MIC Module	S34-2101380-K03	1	Screw	E43-1204005-H29	1			
Component	P/N	Qty														
Speaker Module	S33-A000240-F33	1														
MIC Module	S34-2101380-K03	1														
Screw	E43-1204005-H29	1														

SX20 (MS-1161) Disassembly Guide

5、DRAM MODULE \ SSD CARD \ MB MODULE DIS

	<p>5.1: Remove the WLAN Module; then Disconnect Antenna to WLAN Module and Remove 1 pcs M2*2.5 Screw.</p> <p style="color: red; font-size: small;">Attention: the screw driver torque is 1.0-1.5Kgf-cm</p>
	<p>5.2: Remove SSD Card and Remove 1 pcs M2*2.5 Screw.</p> <p style="color: red; font-size: small;">Attention: the screw driver torque is 1.0-1.5Kgf-cm</p>
	<p>5.3: Remove MB Back To Lower Case.</p>

Component	P/N	Qty
Wlan Module	S57-08000C0-I06	1
Screw	E43-1202507-H29	1

Component	P/N	Qty
SSD CARD	S78-4406340-S77	1

Component	P/N	Qty
MB	607-11611-02S	1

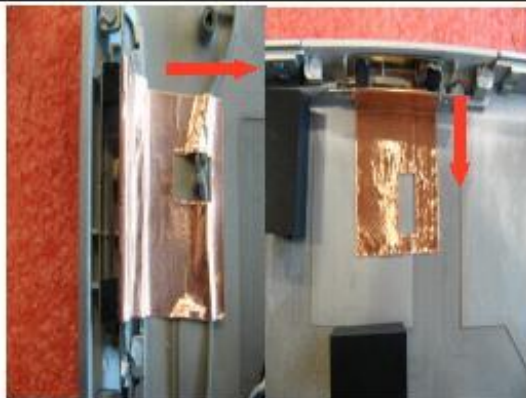
SX20 (MS-1161) Disassembly Guide

6. LAN BOARD \ ANTENNA DIS



6.1: Remove the LAN Board.

Component	P/N	Qty
LAN Board	607-1161A-01S	1

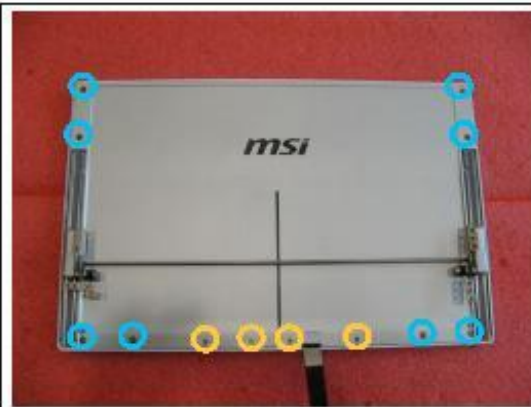


6.2: Remove the Antenna.

Component	P/N	Qty
Antenna(gray)	S79-1802140-V03	1
Antenna(black)	S79-1802150-V03	1

SX20 (MS-1161) Disassembly Guide

7. LCD MODULE DIS



7.1: Remove 8 pcs M2*3 Screws and Remove 4 pcs M2*2 Screws.

Attention: the screw driver torque is 1.0-1.5Kgf-cm

Component	P/N	Qty
Screw	E43-1203003-H29	8
Screw	E43-1202003-G68	4
Hinge	E2M-1610111-G60	1



7.2: Remove LCD Left/Right Hinge; then Remove 14 pcs M2*2 Screws.

Attention: the screw driver torque is 1.0-1.5Kgf-cm

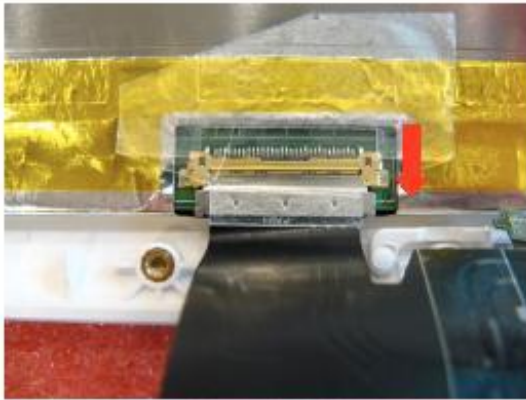
Component	P/N	Qty
Screw	E43-1202010-G68	14



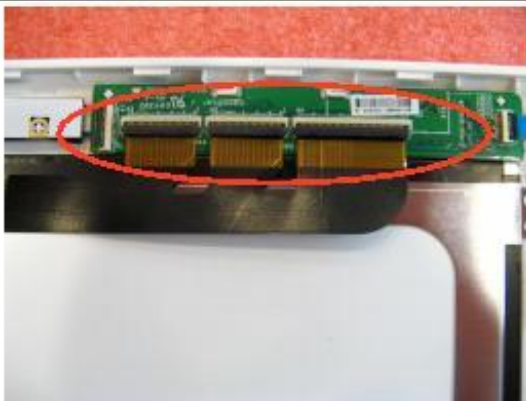
7.3: Disconnect the LVDS Cable.

SX20 (MS-1161) Disassembly Guide

7. LCD MODULE DIS

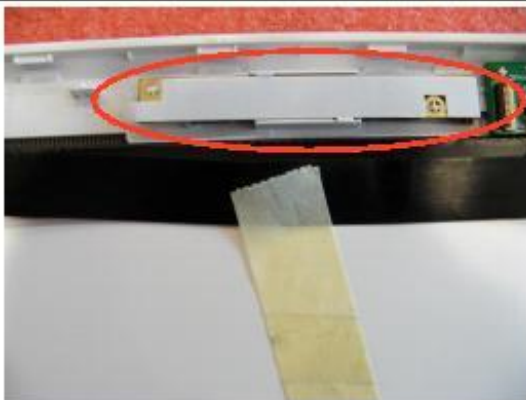


7.4: Disconnect the LVDS Cable.



7.5: Remove the Touchpad Board, then Disconnect the Touchpad Cable.

Component	P/N	Qty
Touchpad Board	607-1161B-01S	1



7.6: Disassemble the Camera Module.

Component	P/N	Qty
Camera Module	S1F-0005290-B36	1

SX20 (MS-1161) Disassembly Guide

7. LCD MODULE DIS



7.7: Disassemble the Display Module with the Bezel.



Component	P/N	Qty
Display Module	S1J-EB0A001-CC1	1