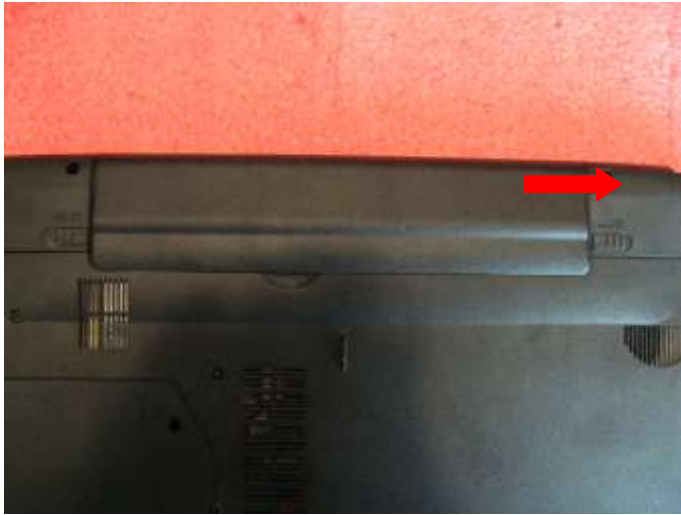


## **GE60 (MS-16GC) Disassembly Guide**

- 1、 BATTERY PACK
- 2、 BOTTOM DOOR ASSY
- 3、 HDD MODULE
- 4、 THERMAL-KIT、 CPU、 DRAM AND WIRELESS
- 5、 ODD MODULE
- 6、 SEPARATE UPPER CASE AND LOWER CASE
- 7、 LOWER CASE ASSY
- 8、 UPPER CASE ASSY
- 9、 LCD MODULE ASSY

# GE60 (MS-16GC) Disassembly Guide

## 1、 BATTERYPACK



1.1: Move the "Unlock" button base on left picture shows.

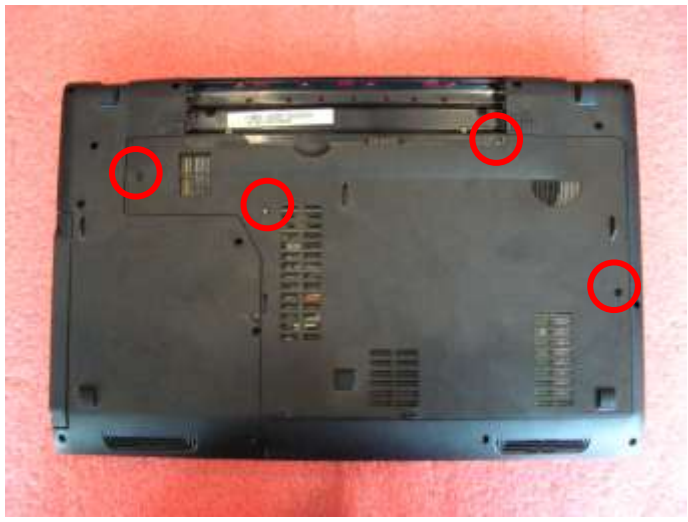


1.2: Release the "Release" button and move the battery pack base on left picture.

Component	P/N	Qty
Battery Pack	S9N-2262210-M47	1

# GE60 (MS-16GC) Disassembly Guide

## 2、BOTTOM DOOR ASSY



2.1: Remove the 4 screws (M2.5\*5mm). Then remove the Bottom door.

**Attention: the screw driver torque is: 2.0-2.5 gf-cm**

Component	P/N	Qty
Bottom door	307-6G1J214-P89	1
Screw	E43-1255001-G68	6

# GE60 (MS-16GC) Disassembly Guide

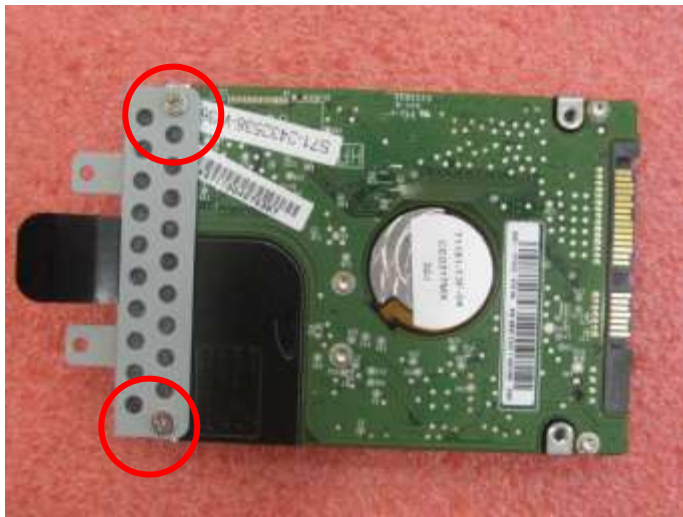
## 3、HDD MODULE



3.1: Remove the 2 screws (M2.5\*5mm); then remove the HDD Module according to the direction as pic shows.

**Attention: the screw driver torque is 2.0-2.5Kgf-cm**

Component	P/N	Qty
Screw	E43-1255001-G68	2



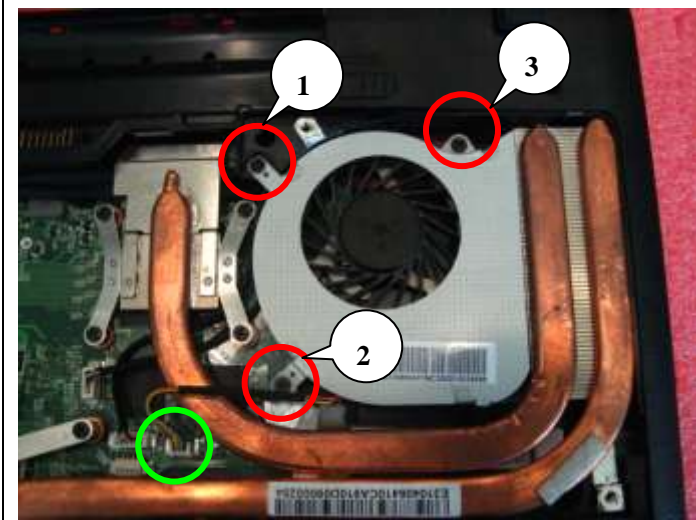
3.2: Remove the 2 screws (M3\*3.5mm) that stabilize the HDD bracket, then remove the HDD bracket.

**Attention: the screw driver torque is 3.0-3.5Kgf-cm**

Component	P/N	Qty
Screw	E43-1303502-G68	2
HDD Bracket	307-6G10111-A89	1
HDD Module	S71-2475702-W36	1

# GE60 (MS-16GC) Disassembly Guide

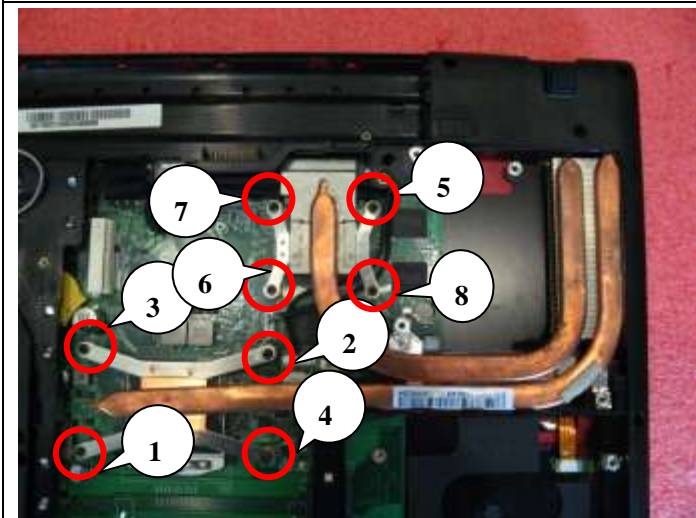
## 4、 THERMAL-KIT、 CPU 、 DRAM AND WIRELESS



4.1: Remove the 3 screws(M2.5\*4mm) and FAN cable, after that remove the Fan.

**Attention:** the screw driver torque is 2.0-2.5Kgf-cm

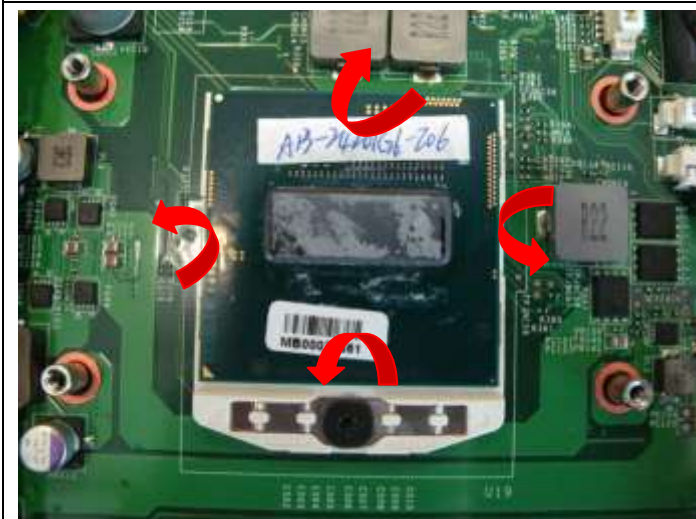
Component	P/N	Qty
Screw	E43-1254001-G68	3
FAN	E33-0800401-MC2	1



4.2: Remove the 8 screws (M2.5\*4mm), after that remove the Heatsink.

**Attention:** the screw driver torque is 2.0-2.2Kgf-cm

Component	P/N	Qty
Screw	E43-1254001-G68	7
Heatsink	E31-0406410-CA9.	1

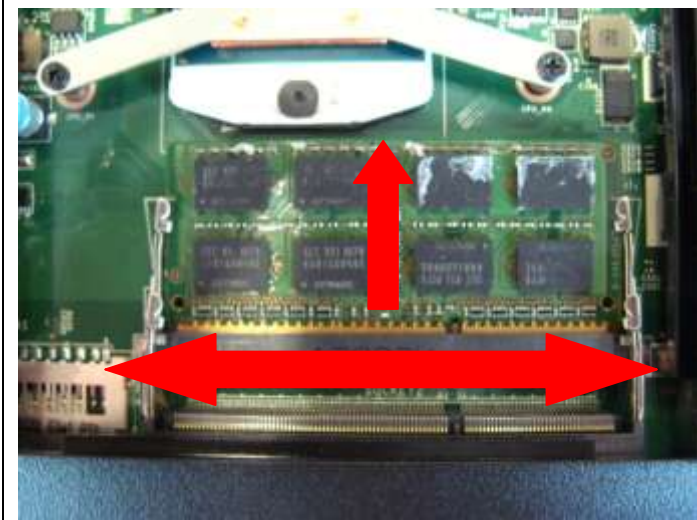


4.3: Open the CPU Slot with Screw Driver, then remove CPU Module as below.

Component	P/N	Qty
CPU	A13-24201G6-I06	1

# GE60 (MS-16GC) Disassembly Guide

## 4、 THERMAL-KIT、 CPU 、 DRAM AND WIRELESS



4.4: Push the two side shielding of RAM as pic shows; Then remove the RAM module according the direction as pic shows.

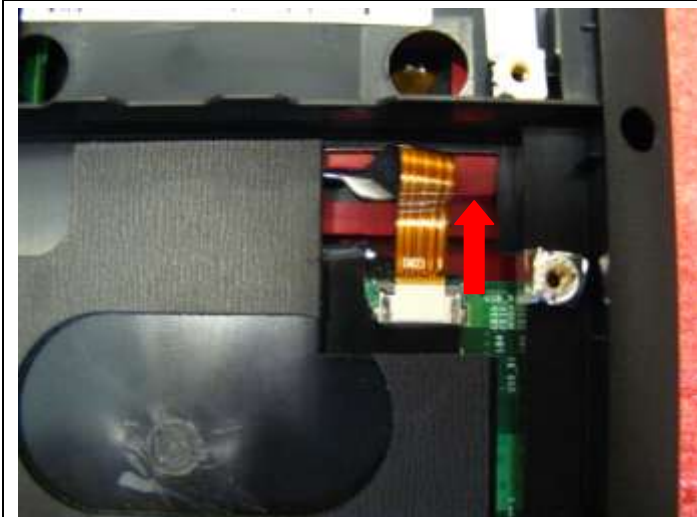
Component	P/N	Qty
RAM Module	S7C-S56AD01-K37	1



4.5: Remove 1 screw (M2\*3mm); then remove the two side wireless card antenna as pic shows.

**Attention: the screw driver torque is: 1.5-2.0Kgf-cm**

Component	P/N	Qty
WLAN Module	S57-08000J0-T46	1
Screw	E43-1203003-G68	1



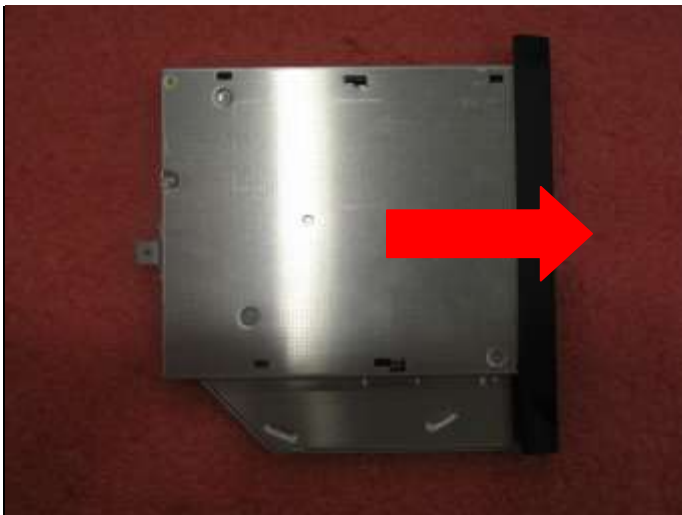
4.6: Disconnect LED Cable.

# GE60 (MS-16GC) Disassembly Guide

## 5、 ODD MODULE

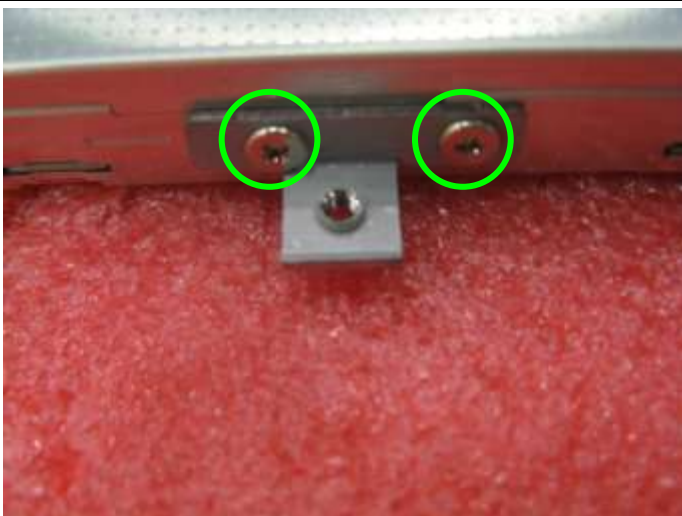


5.1: Remove the ODD Module according to the direction as pic shows.



5.2: Remove ODD Bezel as below.

Component	P/N	Qty
ODD Bezel	307-6G1F212-P89	1



5.3: Remove 2pcs (M2\*3mm) Screws; Then remove ODD Bracket as below.

**Attention: the screw driver torque is 1.5-2.0Kgf-cm**

Component	P/N	Qty
Screw	E43-1203003-H29	2
ODD Bracket	E2M-6G10711-A89	1
ODD Module	S7D-2270087-T87	1

# GE60 (MS-16GC) Disassembly Guide

## 6、SEPARATE UPPER CASE AND LOWER CASE



6.1: Remove the Keyboard Upper cover.

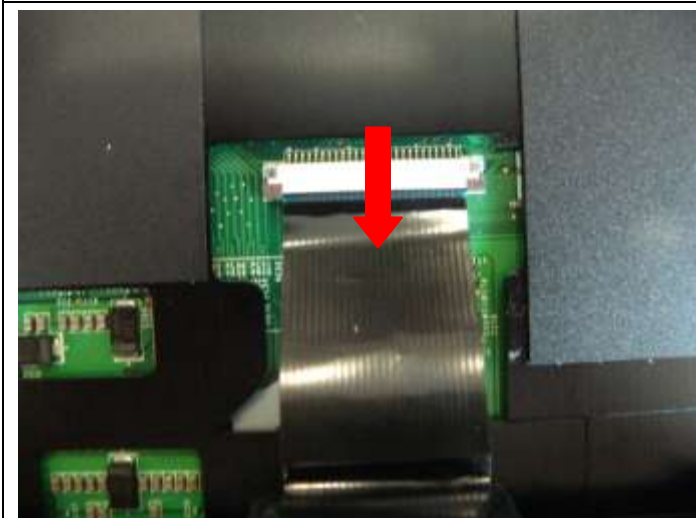
Component	P/N	Qty
K/B upper cover	E2P-6GC0411-G40	1



6.2: Remove 5pcs (M2\*4mm) Screws; Then remove Keyboard.

**Attention: the screw driver torque is 1.5-2.0Kgf-cm**

Component	P/N	Qty
Screw	E43-1204002-G68	5
Keyboard	S1N-3EUS214-SA0	1



6.3 : Firstly push connector according to the direction as pic shows; then remove the cable.

Component	P/N	Qty
Keyboard	S1N-3EUS214-SA0	1

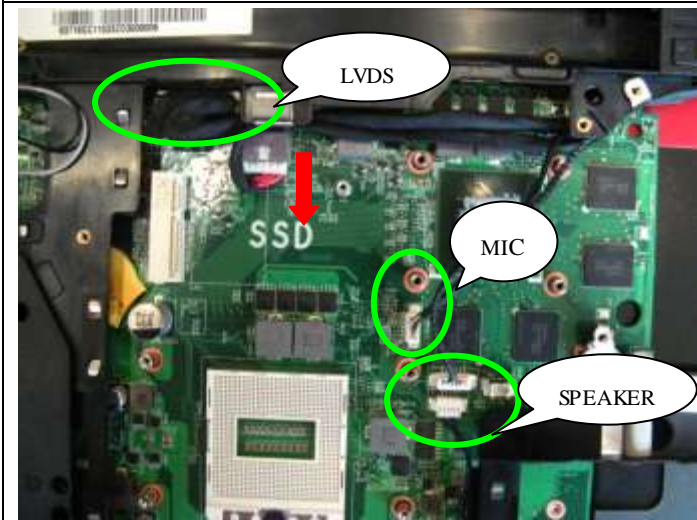


# GE60 (MS-16GC) Disassembly Guide

## 6、SEPARATE UPPER CASE AND LOWER CASE



6.4: Remove Power cable and T/P cable.



6.5: Remove LVDS Cable & MIC Cable & DC Jack cable & Speaker cable.



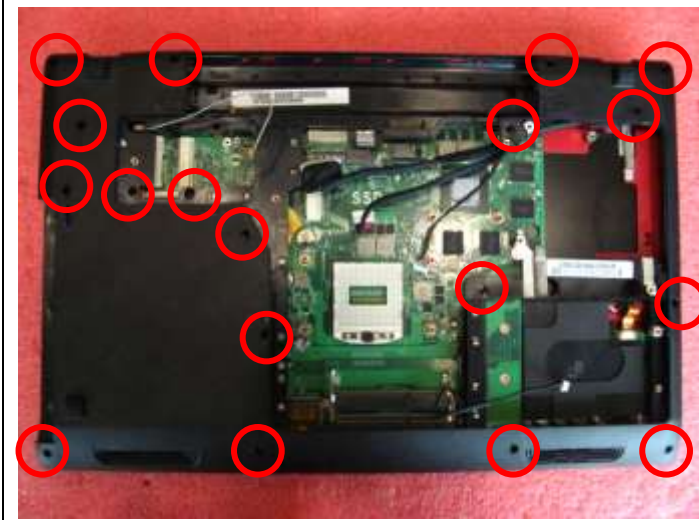
6.6: Remove 5 screws (M2\*3.5mm).

**Attention: the screw driver torque is 1.5-2.0Kgf-cm**

Component	P/N	Qty
Screw	E43-1203501-G68	5

# GE60 (MS-16GC) Disassembly Guide

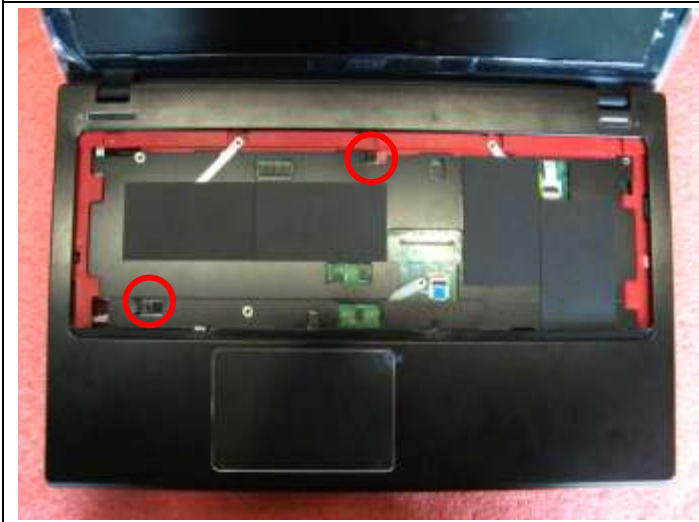
## 6、SEPARATE UPPER CASE AND LOWER CASE



6.7: Remove 18 screws (M2.5\*5mm).

Attention: the screw driver torque is 2.0-2.5Kgf-cm

Component	P/N	Qty
Screw	E43-1255001-G68	18



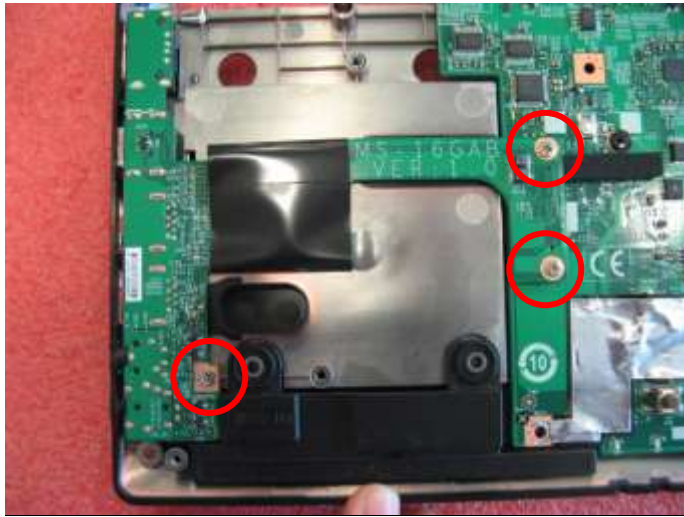
6.8: Remove 2 pcs (M2.5\*5mm) Screws; Then remove upper case.

Attention: the screw driver torque is 1.5-2.0Kgf-cm

Component	P/N	Qty
Screw	E43-1255001-G68	2
Upper case	307-6GCC412-Y31	1

# GE60 (MS-16GC) Disassembly Guide

## 7、 LOWER CASE ASSY



7.1 : Remove the 3screws (M2.5\*4mm).then remove the I/O board(L).

**Attention: the screw driver torque is 2.0-2.5Kgf-cm**

Component	P/N	Qty
screw	E43-1254001-G68	3
I/O board(L)	607-16GCB-01S	1



7.2 : Remove the 3 screws (M2.5\*4mm).then remove the main board.

**Attention: the screw driver torque is 2.0-2.5Kgf-cm**

Component	P/N	Qty
screw	E43-1254001-H29	3
Main board	607-16GC1-03S	1

# GE60 (MS-16GC) Disassembly Guide

## 7、 LOWER CASE ASSY



7.3: Remove 1 screw (M2.5\*4mm); then remove the I/O board(R).

**Attention: the screw driver torque is: 2.0-2.5Kgf-cm**

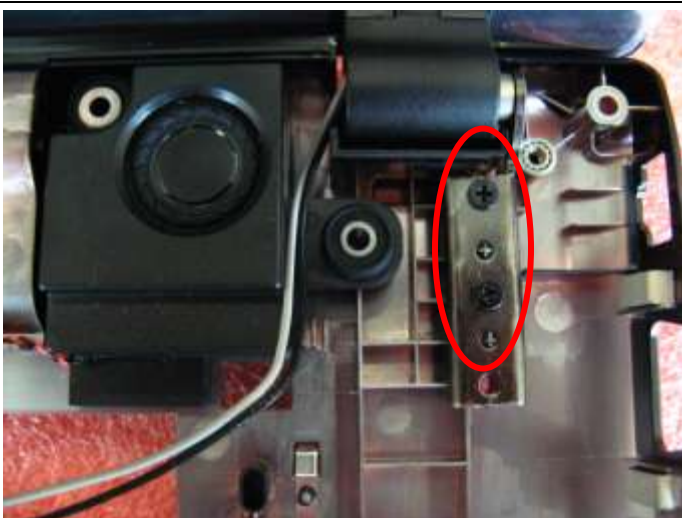
Component	P/N	Qty
I/O board(R)	607-16GCA-01S	1
Screw	E43-1254001-G68	1



7.4: Remove the 2 screws (M2.5\*5mm) that stabilize the left LCD hinge.

**Attention: the screw driver torque is 2.5-3.0Kgf-cm**

Component	P/N	Qty
Screw	E43-1255001-G68	2



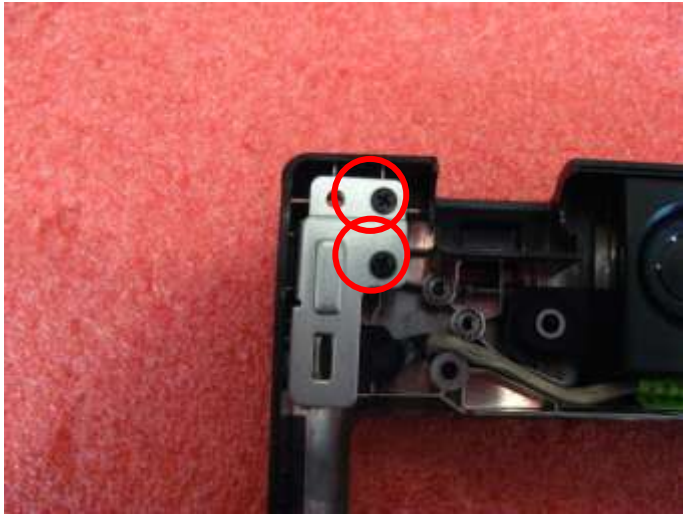
7.5: Remove the 2 screws (M2.5\*5mm) that stabilize the right LCD hinge.

**Attention: the screw driver torque is 2.5-3.0Kgf-cm**

Component	P/N	Qty
Screw	E43-1255001-G68	2

# GE60 (MS-16GC) Disassembly Guide

## 7、 LOWER CASE ASSY



7.6 : Remove the 2screws (M2.5\*5mm), then remove the power conn.

**Attention: the screw driver torque is 2.5-3.0Kgf-cm**

Component	P/N	Qty
Screw	E43-1255001-G68	2



7.7: Remove the Speaker module from lower case

Component	P/N	Qty
Speaker	S33-A020241-F33	1
Lower Case	307-6G3D213-P89	1

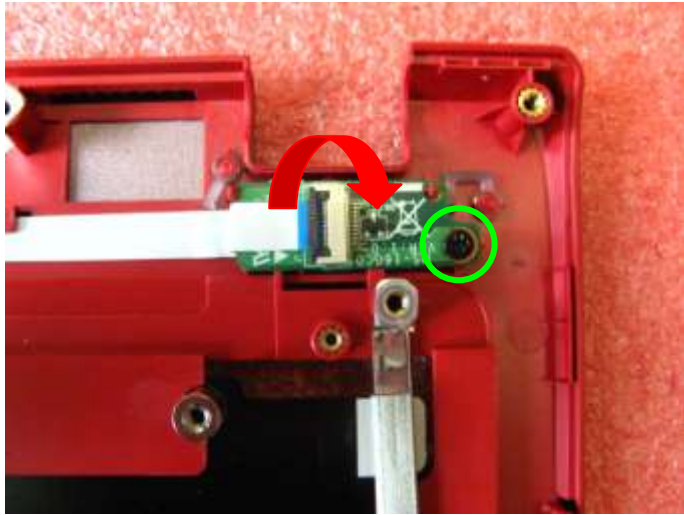


7.8: Remove the Speaker module

Component	P/N	Qty
Speaker	S33-A020251-F33	1

# GE60 (MS-16GC) Disassembly Guide

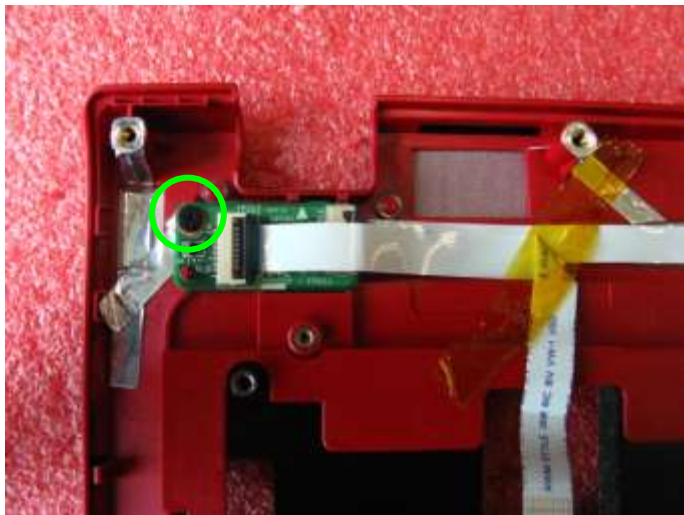
## 8、UPPER CASE ASSY



8.1: Remove 1 screws (M2.5\*4mm), then remove the Launch board.

Attention: the screw driver torque is 1.5-2.0Kgf-cm

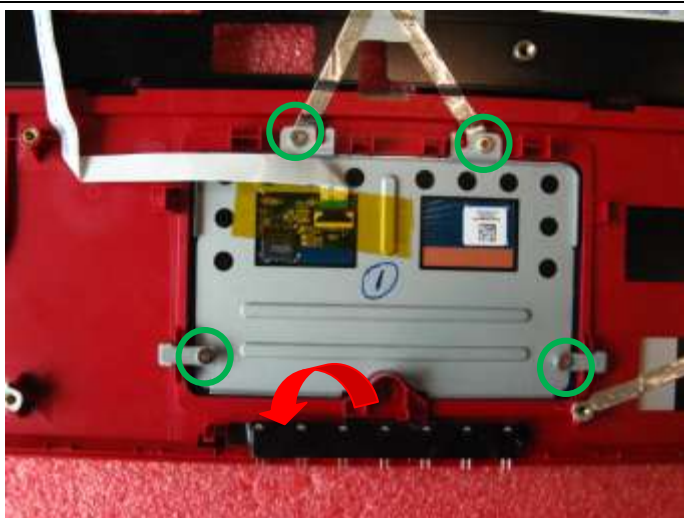
Component	P/N	Qty
screw	E43-1254001-G68	1
Launch board	607-16GCD-01S	1



8.2: Remove 1 screws (M2.5\*4mm), then remove the Power board.

Attention: the screw driver torque is 1.5-2.0Kgf-cm

Component	P/N	Qty
screw	E43-1254001-G68	1
Power board	607-16GCC-01S	1



8.3: Remove 4 screws (M2\*3mm), after that remove the T/P module.

Component	P/N	Qty
Screw	E43-1203003-G68	1
Touchpad Module	S78-3700830-E47	1

# GE60 (MS-16GC) Disassembly Guide

## 9、 LCD MODULE ASSY



9.1: When removing the LCD bezel, should begin from the upside, then the two sides to downside.

Component	P/N	Qty
LCD Bezel	307-6G1B241-U22	1



9.2 : Remove the 1 screw (M2.5\*4.5mm), then remove the left hinge cap.

**Attention: the screw driver torque is 1.2-1.5Kgf-cm**

Component	P/N	Qty
HINGE CAP_L	E2P-6G10112-P89	1
screw	E43-1254502-G68	1



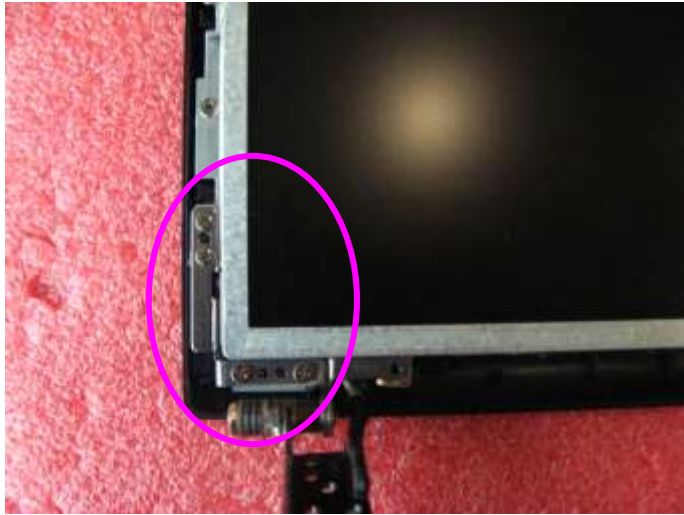
9.3 : Remove the 1 screw (M2.5\*4.5mm), then remove the right hinge cap.

**Attention: the screw driver torque is 1.2-1.5Kgf-cm**

Component	P/N	Qty
HINGE CAP_R	E2P-6G10212-P89	1
screw	E43-1254502-G68	1

# GE60 (MS-16GC) Disassembly Guide

## 9、 LCD MODULE ASSY



9.4: Remove 4 screws (M2.5\*4.5mm) that stabilize the left hinge.

**Attention: the screw driver torque is 3.0-3.5Kgf-cm**

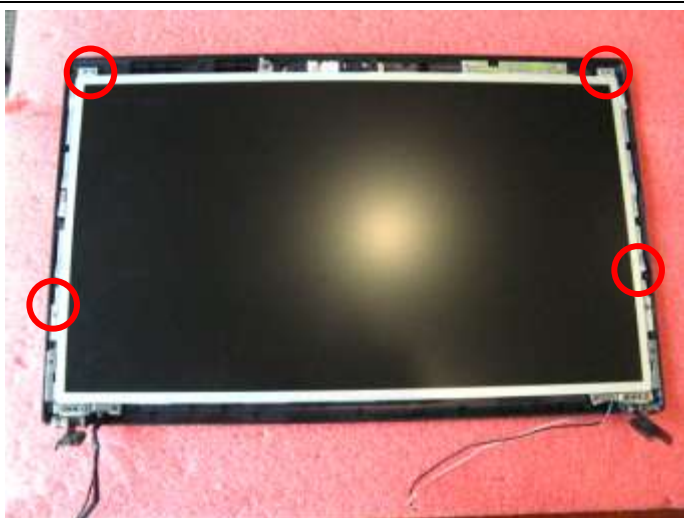
Component	P/N	Qty
screw	E43-1254502-G68	2
Hinge L	E2M-6GC0211-G60	1



9.5: Remove 4 screws (M2.5\*4.5mm) that stabilize the right hinge.

**Attention: the screw driver torque is 3.0-3.5Kgf-cm**

Component	P/N	Qty
screw	E43-1254502-G68	3
Hinge R	E2M-6GC0311-G60	1



9.6: Remove the 2 screws (M2.5\*4.5mm), then remove the camera cable and remove the display module from LCD cover.

**Attention: the screw driver torque is 3.0-3.5Kgf-cm**

Component	P/N	Qty
Screw	E43-1254502-G68	2



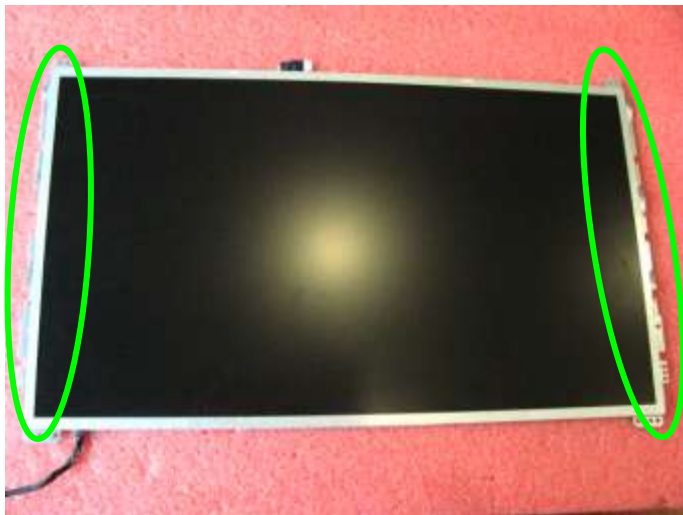
# GE60 (MS-16GC) Disassembly Guide

## 9、 LCD MODULE ASSY



9.7: Remove the LVDS cable from display module

Component	P/N	Qty
LVDS Cable	K19-3032002-V03	1



9.8: Remove the 8 screws (M2\*3mm).

**Attention: the screw driver torque is 1.5-2.0Kgf-cm**

Component	P/N	Qty
Display Module	S1J-6E0A002-L47	1
LCD BRACKET-L	E2M-6G10312-A89	1
LCD BRACKET-R	E2M-6G10412-A89	1
Screw	E43-1203003-G68	8

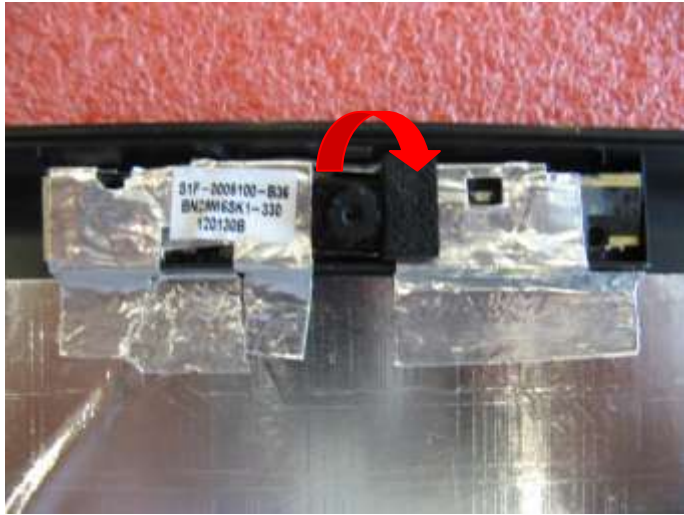


9.9: Remove the MIC Module as left picture show

Component	P/N	Qty
MIC Module	S34-2101200-K03	1

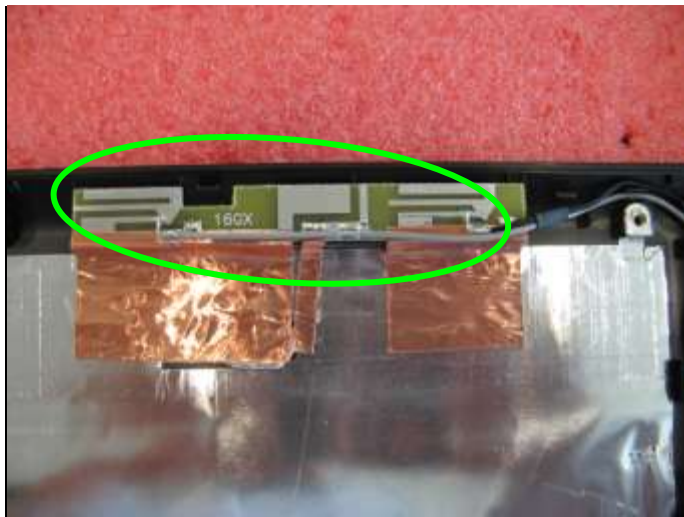
# GE60 (MS-16GC) Disassembly Guide

## 9、 LCD MODULE ASSY



9.10: Remove the CMOS camera module according to the sequence as pic shows.

Component	P/N	Qty
Camera Module	S1F-0005320-B36	1



9.11: Remove the WIRELESS Antenna board from LCD Cover.

Component	P/N	Qty
Antenna	S79-1800Y20-J51	1
LCD Cover	307-6G2AD13-P89	1