

GX70 (MS-176K) Disassembly Guide

- 1、 BATTERY PACK
- 2、 ODD MODULE
- 3、 BOTTOM DOOR ASSY
- 4、 HDD MODULE
- 5、 THERMAL-KIT、 CPU、 DRAM、 SSD CARD AND SATA BOARD
- 6、 SEPARATE UPPER CASE AND LOWER CASE
- 7、 LOWER CASE ASSY
- 8、 UPPER CASE ASSY
- 9、 LCD MODULE ASSY

GX70 (MS-176K) Disassembly Guide

1、 BATTERYPACK



1.1: Move the "Unlock" button base on left picture shows.



1.2: Release the "Release" button and move the battery pack base on left picture.

Component	P/N	Qty
Battery Pack	S9N-3496200-M47	1

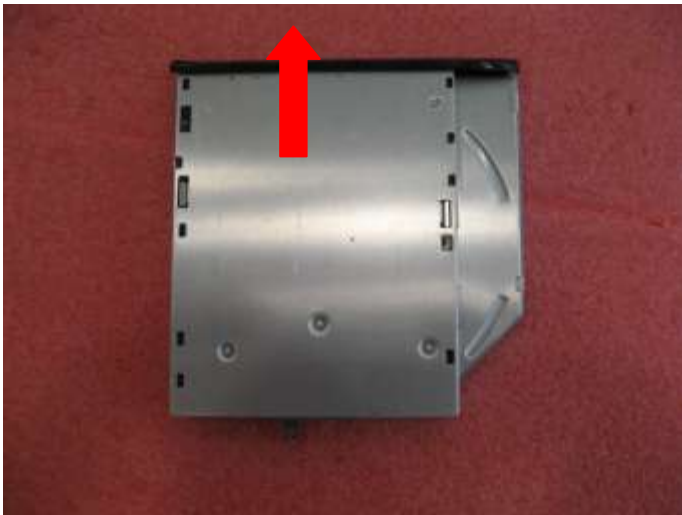
GX70 (MS-176K) Disassembly Guide

2、 ODD MODULE



2.1 : Remove the 1 screws (M2.5*7mm) Then Remove the ODD Module according to the direction as pic shows.

Component	P/N	Qty
screw	E43-1257002-G68	1



2.2: Remove ODD Bezel as below.

Co ponent	P/N	Qty
ODD Bezel	307-762F211-Y31	1



2.3: Remove 2 Screws (M2*3mm); Then remove ODD Bracket as below.

Attention: the screw driver torque is 1.0-1.5Kgf-cm

Component	P/N	Qty
Screw	E43-1203003-H29	2
ODD Bracket	E2M-7611311-C22	1
ODD Module	S7D-2270066-H44	1

GX70 (MS-176K) Disassembly Guide

3、BOTTOM DOOR ASSY



3.1: Remove the 7 screws (M2.5*7mm). Then remove the Bottom door.

Attention: the screw driver torque is: 1.8-2.2 gf-cm

Component	P/N	Qty
Bottom door	307-761J213-Y31	1
Screw	E43-1257002-G68	7

GX70 (MS-176K) Disassembly Guide

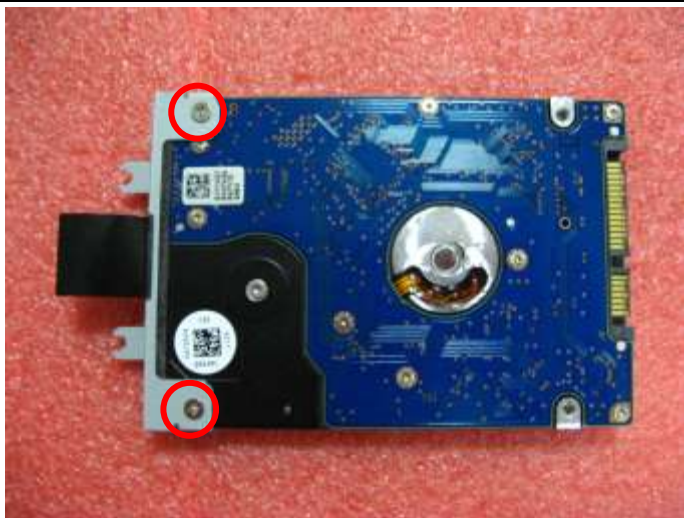
4、HDD MODULE



4.1: Remove the 2 screws (M2.5*5mm); then remove the HDD Module according to the direction as pic shows.

Attention: the screw driver torque is 1.8-2.2Kgf-cm

Component	P/	Qty
Screw	E43-1255002-G68	2



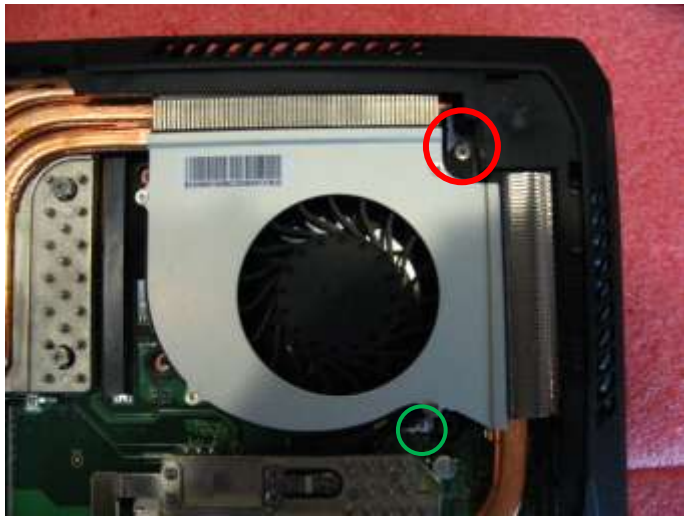
4.2: Remove the 2 screws (M3*4mm) that stabilize the HDD brackets, then remove the HDD bracket.

Attention: the screw driver torque is 1.8-2.2Kgf-cm

Component	P/N	Qty
Screw	E43-1304009-G68	2
HDD Bracket	307-6F10112-C22	1
HDD Module	S71-2475702-W36	1

GX70 (MS-176K) Disassembly Guide

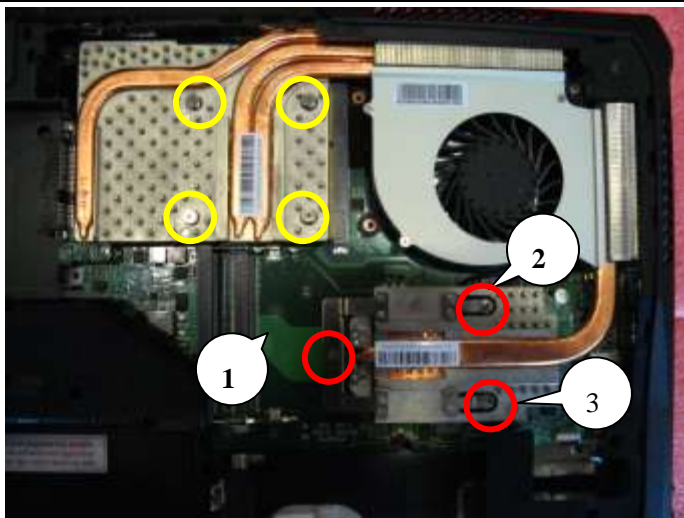
5、 THERMAL-KIT、 CPU AND DRAM



5.1: Remove the 1 screw(M2.5*5mm) and FAN cable, after that remove the Fan.

Attention: the screw driver torque is 1.8-2.2Kgf-cm

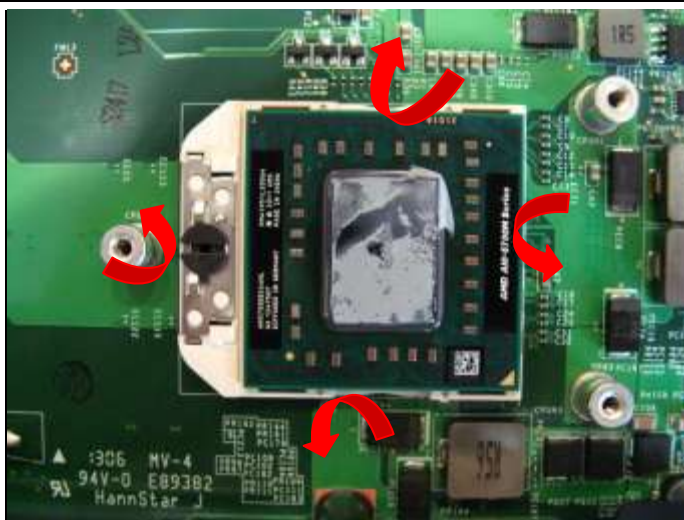
Component	P/N	Qty
Screw	E43-1255002-G68	1
FAN	E33-0800183-MC2	1



5.2: Remove the 3 screws (M2.5*5mm) and 4 spring screws, after that remove the two Heatsink.

Attention: the screw driver torque is 1.8-2.2Kgf-cm

Component	P/N	Qty
Screw	E43-1255002-G68	3
Heatsink	E31-0406091-Y31	1
Heatsink	E31-0803750-Y31	1

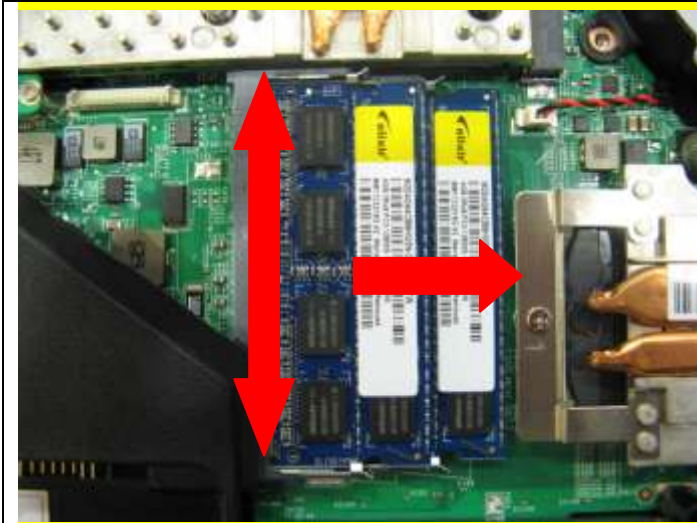


5.3: Open the CPU Slot with Screw Driver, then remove CPU Module as below.

Component	P/N	Qty
CPU	A10-K103506-A08	1

GX70 (MS-176K) Disassembly Guide

5、 THERMAL-KIT、 CPU AND DRAM



5.4: Push the two side shielding of DRAM as pic shows; Then remove the DRAM Module according the direction as pic shows.

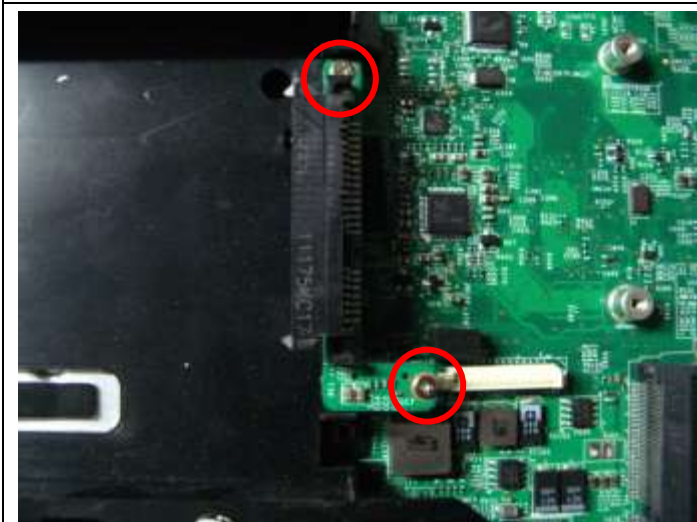
Component	P/N	Qty
DRAM Module	S7C-S48A501-A97	2



5.5: Remove 1 screw (M2.5*5mm); then remove the VGA card as pic shows.

Attention: the screw driver torque is: 1.8-2.2Kgf-cm

Component	P/N	Qty
VGA Card	607-1W0D1-01S	1
Screw	E43-1255002-G68	1



5.6: Remove 2 screws(M2*4m); then remove the HDD2 Board.

Attention: the screw driver torque is: 1.2-1.6Kgf-cm

Component	P/N	Qty
HDD2 Board	607-176KD-01S	1
Screw	E43-1204002-G68	2

GX70 (MS-176K) Disassembly Guide

6、SEPARATE UPPER CASE AND LOWER CASE



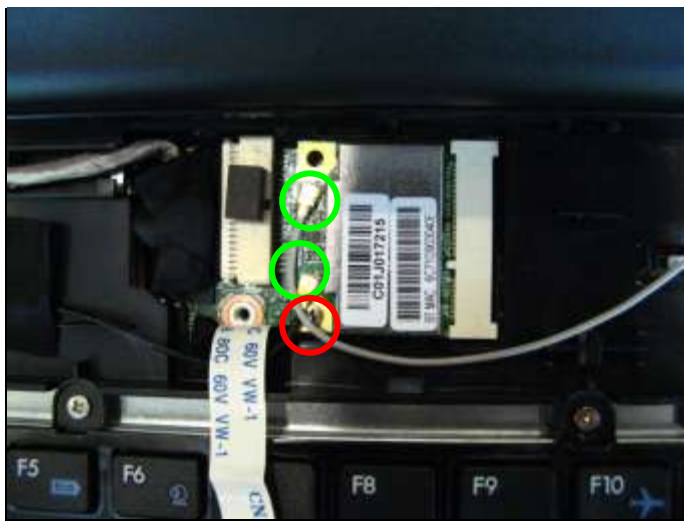
6.1: Before remove K/B, firstly remove the Middle Cover. Care the Sensor board FPC below the cover.

Component	P/N	Qty
Middle Cover	307-761E213-Y31	1



6.2: Remove the Sensor board.

Component	P/N	Qty
Sensor Board	607-17622-01S	1



6.3: Remove 1 screw(M2*3mm),then remove the wlan Antenna and wlan card.

Attention: the screw driver torque is: 1.2-1.6Kgf-cm

Component	P/N	Qty
WLAN Module	S57-08000J0-T46	1
Screw	E43-1203003-H29	1

GX70 (MS-176K) Disassembly Guide

6、SEPARATE UPPER CASE AND LOWER CASE

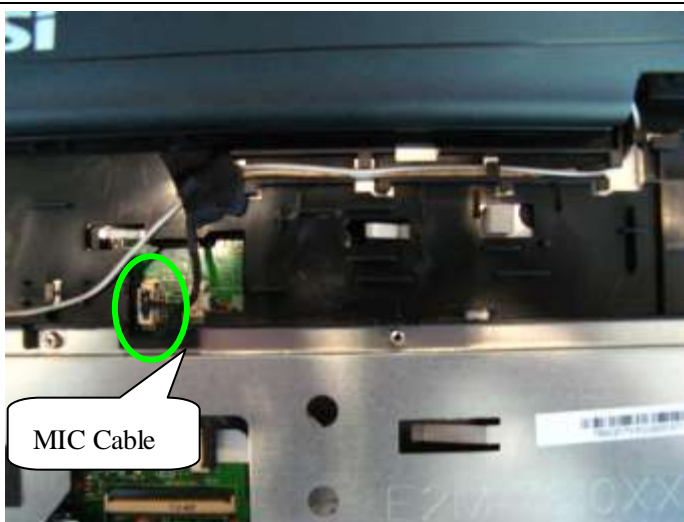


6.4: Remove the left and right hinge caps.

Component	P/N	Qty
Left Hinge cap	E2P-7610223-Y31	1
Right Hinge cap	E2P-7610323-Y31	1



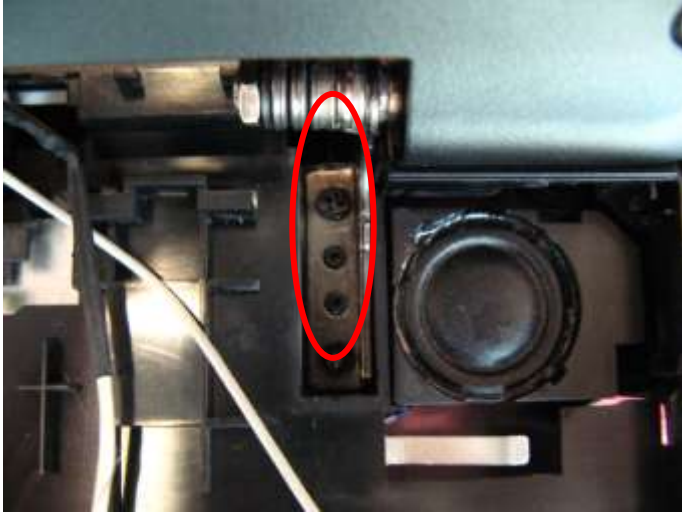
6.5: Remove the LVDS cable as pic shows.



6.6: Remove MIC cable.

GX70 (MS-176K) Disassembly Guide

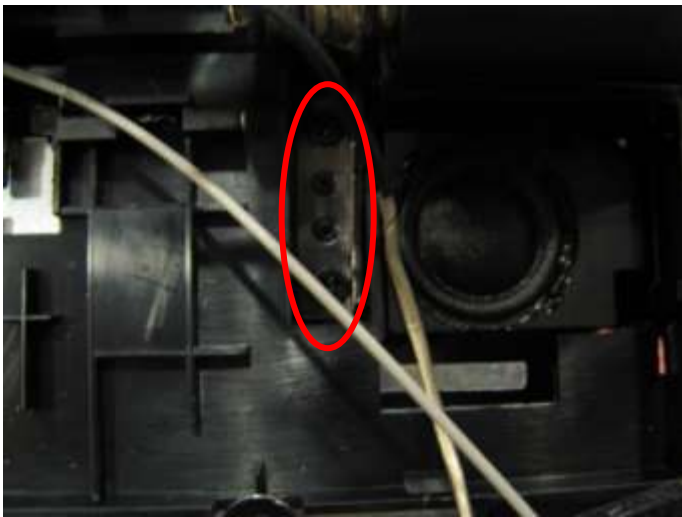
6、SEPARATE UPPER CASE AND LOWER CASE



6.7: Remove the 2 screws (M2.5*7mm) that stabilize the right LCD hinge.

Attention: the screw driver torque is 3.0-3.5Kgf-cm

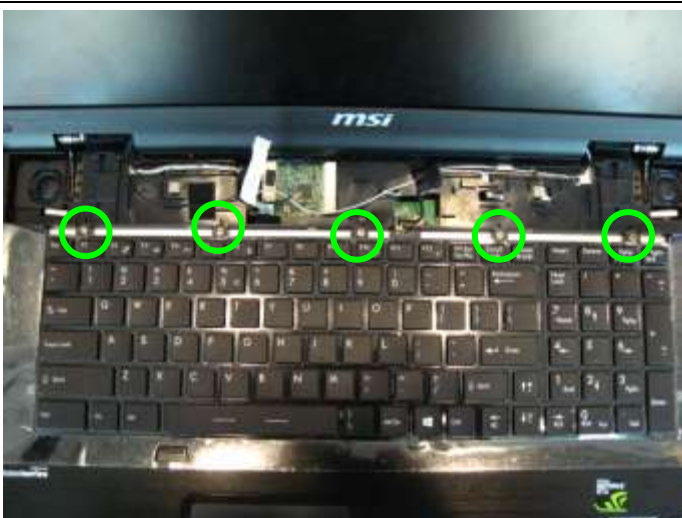
Component	P/N	Qty
Screw	E43-1257002-G68	2
R-Hinge	E2M-7610412-G60	1



6.8: Remove the 2 screws (M2.5*7mm) that stabilize the left LCD hinge.

Attention: the screw driver torque is 3.0-3.5Kgf-cm

Component	P/N	Qty
Screw	E43-1257002-G68	2
L-Hinge	E2M-7610512-G60	1



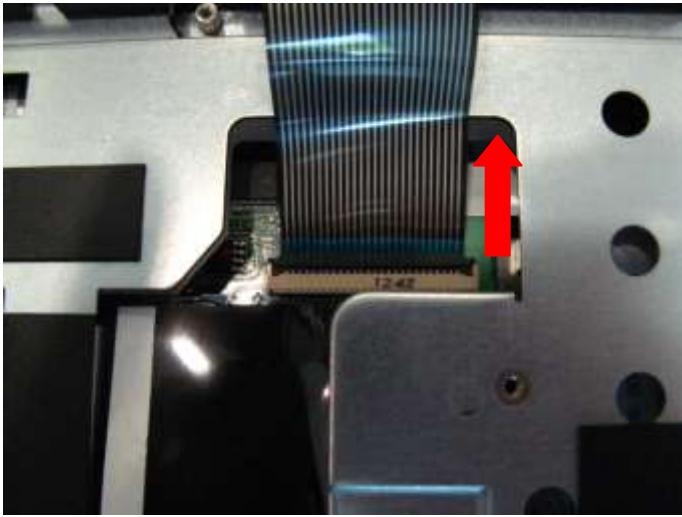
6.9: Remove the 5 screws (M2*4mm) that stabilize the keyboard. Then remove the Keyboard.

Attention: the screw driver torque is 1.2-1.6Kgf-cm

Component	P/N	Qty
Screw	E43-1204002-G68	5

GX70 (MS-176K) Disassembly Guide

6、SEPARATE UPPER CASE AND LOWER CASE



6.10: Firstly push connector according to the direction as pic shows; then remove the cable.

Compon nt	P/N	Qty
Keyboard	S1N-3EUS2Y1-SA0	1



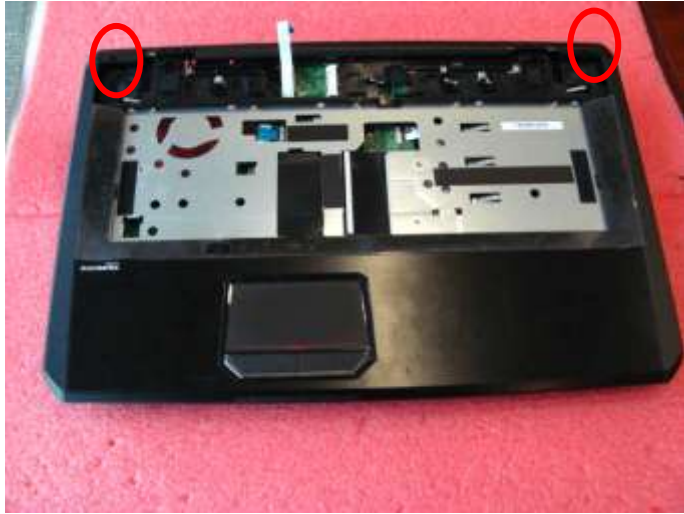
6.12: Remove 12 screws (M2.5*7mm).

Attention: the screw driver torque is 1.8-2.2Kgf-cm

Component	P/N	Qty
Screw	E43-1257002-G68	11

GX70 (MS-176K) Disassembly Guide

6、SEPARATE UPPER CASE AND LOWER CASE



6.13: Remove the 2 screws (M2.5*7mm) , then remove the upper case.

Attention: the screw driver torque is 1.8-2.2Kgf-cm

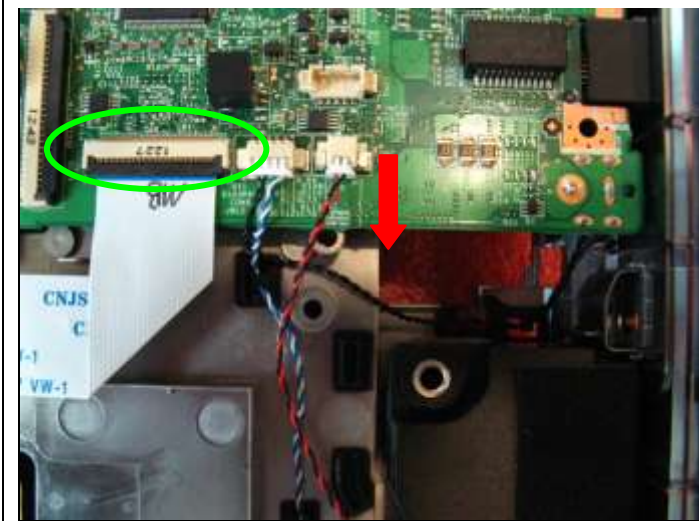
Component	P/N	Qty
Screw	E43-1257002-G68	2



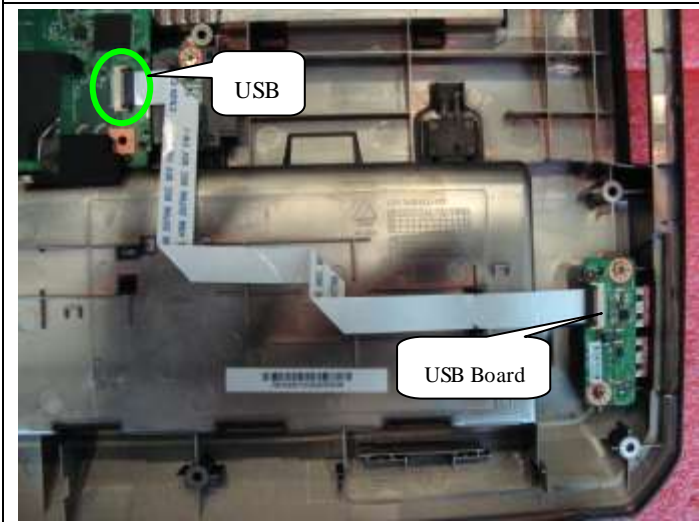
6.14: Remove the Touchpad FFC.

GX70 (MS-176K) Disassembly Guide

7、LOWER CASE ASSY



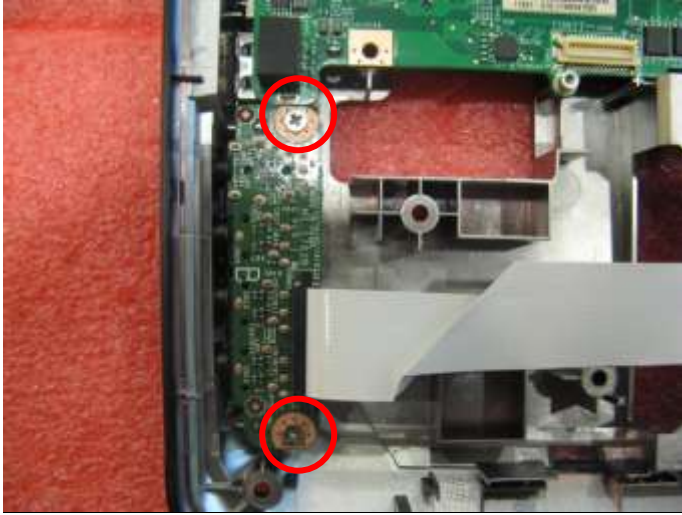
7.1: Remove the Speaker cable and Audio Cable.



7.2: Remove the USB Cable.

GX70 (MS-176K) Disassembly Guide

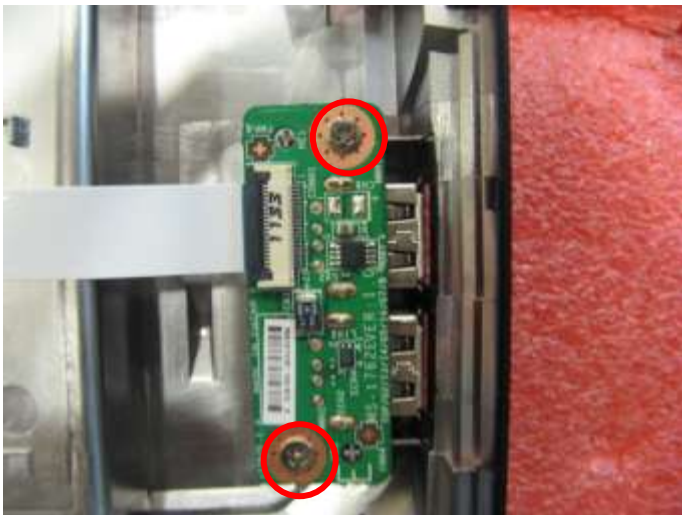
7、LOWER CASE ASSY



7.3: Remove the 2 screws (M2.5*5mm).then remove the Audio board.

Attention: the screw driver torque is 1.8-2.2Kgf-cm

Component	P/N	Qty
screw	E43-1255002-G68	2
Audio board	607-176KB-01S	1



7.4: Remove the 2 screws (M2.5*5mm).then remove the USB board.

Attention: the screw driver torque is 1.8-2.2Kgf-cm

Component	P/N	Qty
Screw	E43-1255002-G68	2
USB board	607-176KE-01S	1



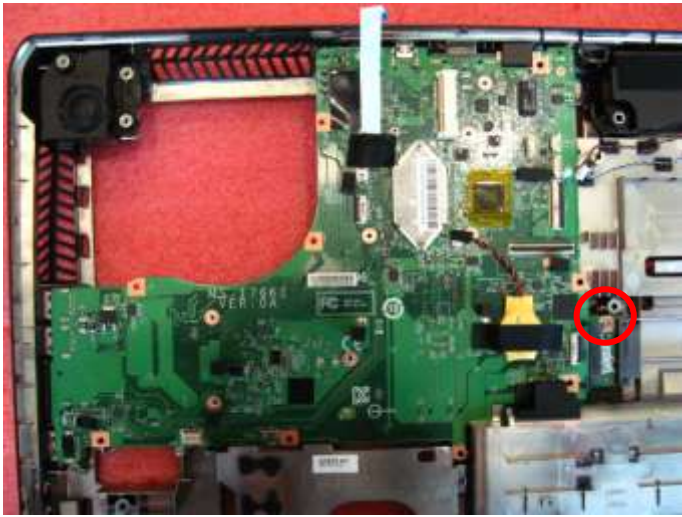
7.5: Remove the 1screw (M2*4mm).then remove the HDD1 Board.

Attention: the screw driver torque is 1.2-1.6Kgf-cm

Component	P/N	Qty
Screw	E43-1204002-G68	1
HDD1 Board	607-176KA-01S	1

GX70 (MS-176K) Disassembly Guide

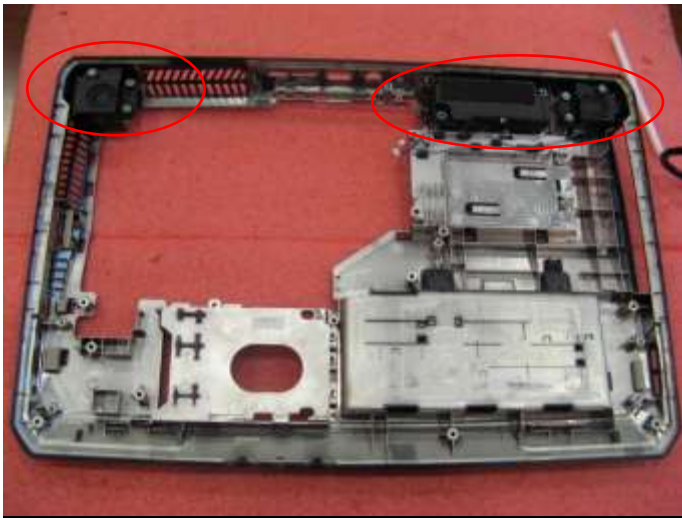
7、LOWER CASE ASSY



7.6: Remove the 1 screw (M2.5*5mm).then remove the main board from Lower case.

Attention: the screw driver torque is 1.8-2.2Kgf-cm

Component	P/N	Qty
Screw	E43-1255002-G68	1
Main Board	607-176K1-01S	1

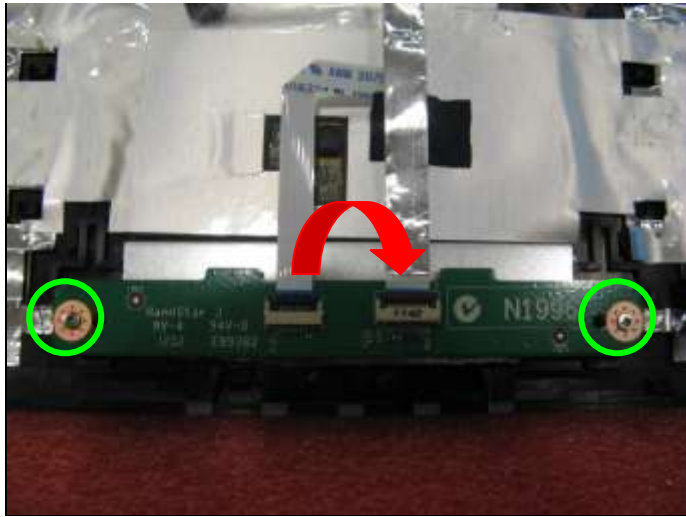


7.7: Remove the Speaker and woofer module from lower case.

Component	P/N	Qty
Woofer	S33-S030111-F33	1
Speaker Module	S33-A020230-F33	1
Lower Case	307-761D232-Y31	1

GX70 (MS-176K) Disassembly Guide

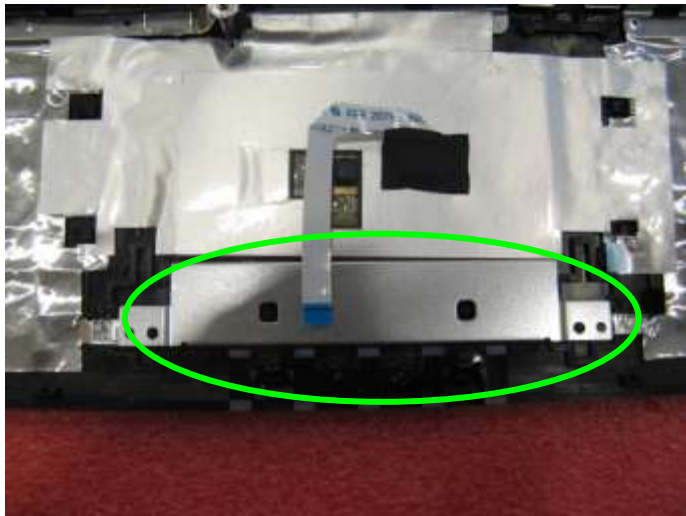
8、UPPER CASE ASSY



8.1: Remove 2 screws (M2*3mm), then remove the T/P board.

Attention: the screw driver torque is 1.2-1.6Kgf-cm

Component	P/N	Qty
screw	E43-1203003-H29	2
Touchpad board	607-176KC-01S	1
Upper Case	307-762C217-Y31	1



8.2: : Remove the T/P iron shielding.



8.3: Remove the T/P module.

Component	P/N	Qty
Touchpad Module	S78-3700630-E47	1

GX70 (MS-176K) Disassembly Guide

9、 LCD MODULE ASSY



9.1: Remove the 2 cover rubber.

Component	P/N	Qty
Rubber	E2Y-6320931-Y40	4



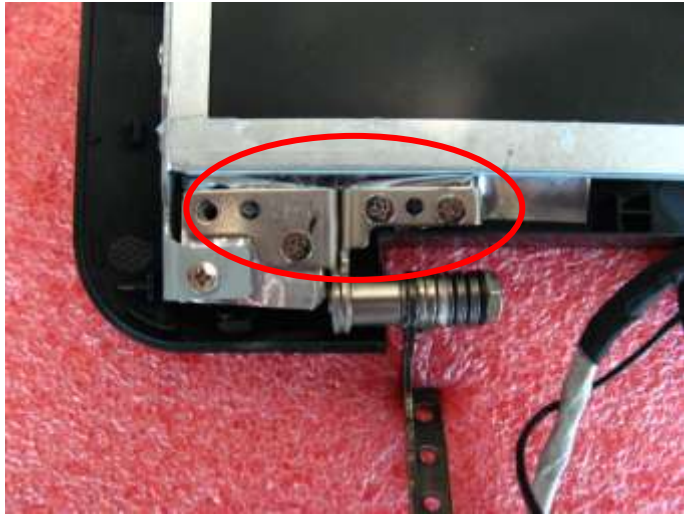
9.2 Remove the 2 screws (M2.5*5mm), then remove the LCD bezel, should begin from the two sides, then the upside to downside.

Attention: the screw driver torque is 1.8-2.2Kgf-cm

Component	P/N	Qty
Screw	E43-1255002-G68	2
LCD Bezel	307-763B218-U22	1

GX70 (MS-176K) Disassembly Guide

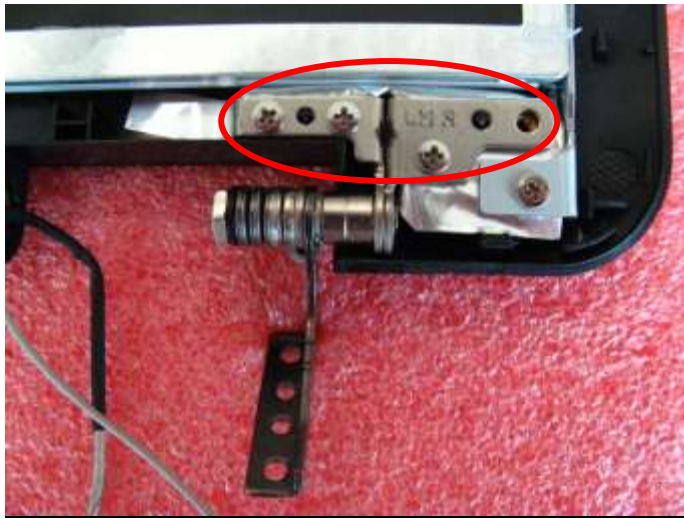
9、 LCD MODULE ASSY



9.3: Remove the 3 screws (M2.5*5mm) that stabilize the left hinge.

Attention: the screw driver torque is 3.0-3.5Kgf-cm

Component	P/N	Qty
screw	E43-1255002-G68	3
Hinge L	E2M-7610512-G60	1



9.4: Remove the 3 screws (M2.5*5mm) that stabilize the right hinge.

Attention: the screw driver torque is 3.0-3.5Kgf-cm

Component	P/N	Qty
Screw	E43-1255002-G68	3
Hinge R	E2M-7610412-G60	1



9.5: Remove the 6 screws (M2.5*5mm).

Attention: the screw driver torque is 1.8-2.2Kgf-cm

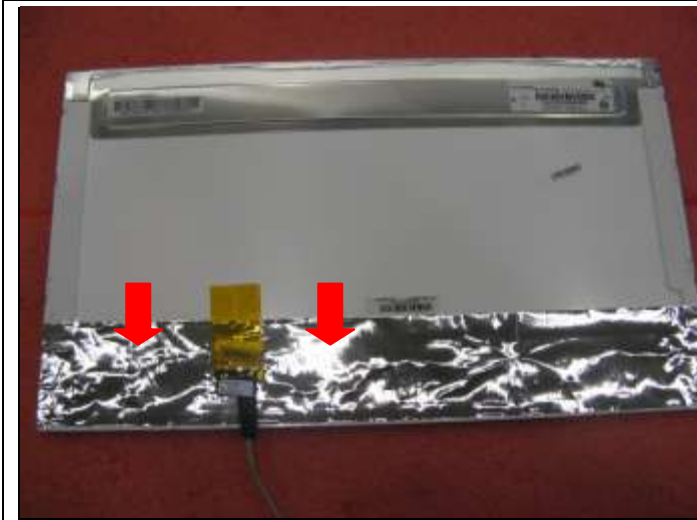
Component	P/N	Qty
screw	E43-1255002-G68	6

GX70 (MS-176K) Disassembly Guide

9、 LCD MODULE ASSY



9.6: Remove the camera cable, and then remove the display module from LCD cover.



9.7: Remove the LVDS cable from display module.

Component	P/N	Qty
LVDS Cable	K19-3031005-H39	1



9.8: Remove the 6 screws (M2*3mm).

Attention: the screw driver torque is 1.2-1.6Kgf-cm

Component	P/N	Qty
Display Module	S1J-7E0A004-CC1	1
LCD BRACKET-L	E2M-7610311-C22	1
LCD BRACKET-R	E2M-7610211-C22	1
Screw	E43-1203003-G68	6

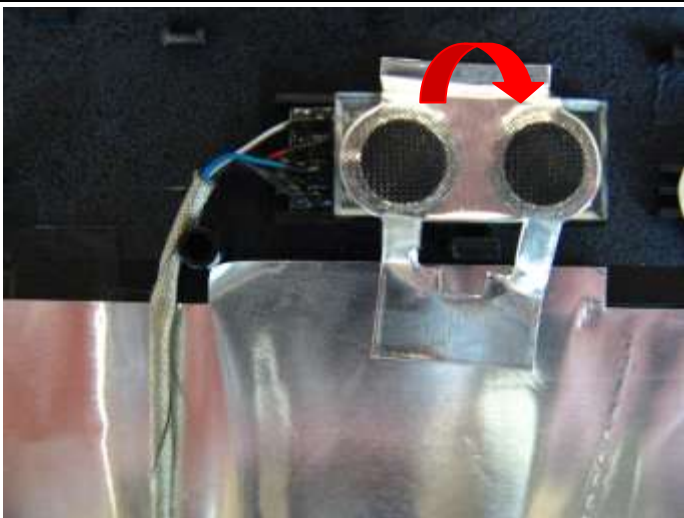
GX70 (MS-176K) Disassembly Guide

9、 LCD MODULE ASSY



9.9: Remove the CMOS camera module according to the sequence as pic shows.

Component	P/N	Qty
Camera Module	S1F-0005300-B36	1



9.10: Remove the MIC Module as left picture show.

Component	P/N	Qty
MIC Module	S34-2101260-N44	1

GX70 (MS-176K) Disassembly Guide

9、 LCD MODULE ASSY



9.11: Remove the WIRELESS L-Antenna board from LCD Cover.

Component	P/N	Qty
L-Antenna	S79-1801240-V03	1



9.12: Remove the WIRELESS R-Antenna board from LCD Cover.

Component	P/N	Qty
R-Antenna	S79-1801250-V03	1
LCD Cover	307-761A215-Y31	1