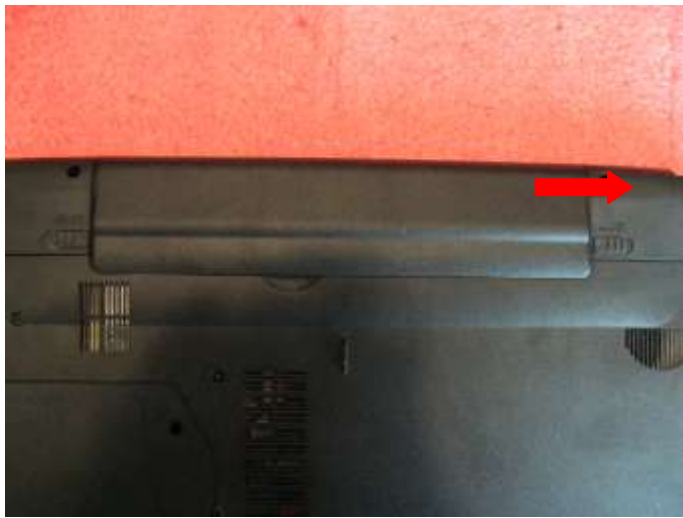


GE70 (MS-1757) Disassembly Guide

- 1、 BATTERY PACK
- 2、 BOTTOM DOOR ASSY
- 3、 HDD MODULE
- 4、 THERMAL-KIT、 CPU、 DRAM AND WIRELESS
- 5、 ODD MODULE
- 6、 SEPARATE UPPER CASE AND LOWER CASE
- 7、 LOWER CASE ASSY
- 8、 UPPER CASE ASSY
- 9、 LCD MODULE ASSY

GE70 (MS-1757) Disassembly Guide

1、 BATTERYPACK



1.1: Move the "Unlock" button base on left picture shows.

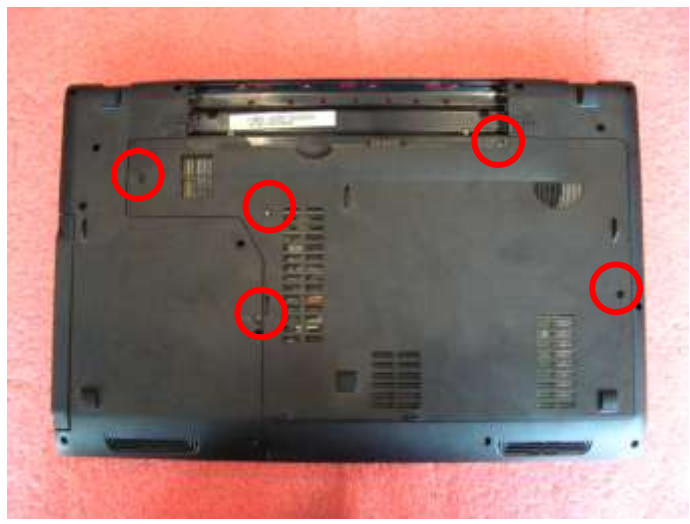


1.2: Release the "Release" button and move the battery pack base on left picture.

Component	P/N	Qty
Battery Pack	S9N-2262210-M47	1

GE70 (MS-1757) Disassembly Guide

2、BOTTOM DOOR ASSY



2.1 : Remove the 5 screws (M2.5*5.5mm). Then remove the Bottom door.

Attention: the screw driver torque is: 2.0-2.5 gf-cm

Component	P/N	Qty
Bottom door	E2P-751J211-P89	1
Screw	E43-1255501-H29	5

GE70 (MS-1757) Disassembly Guide

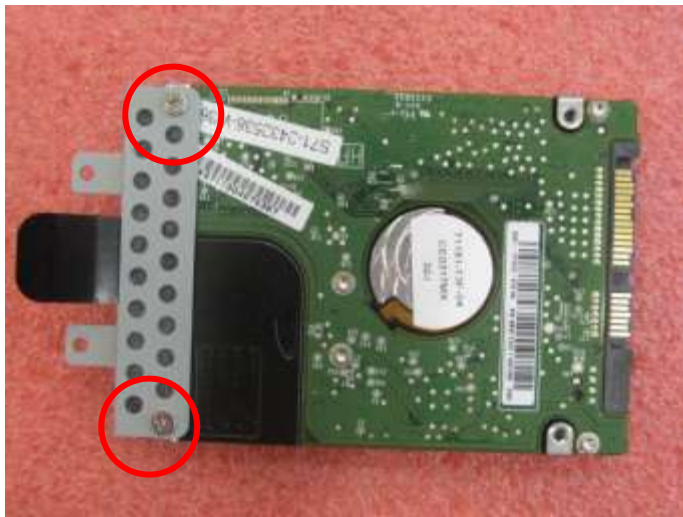
3、HDD MODULE



3.1: Remove the 2 screws (M2.5*4.5mm); then remove the HDD Module according to the direction as pic shows.

Attention: the screw driver torque is 2.0-2.5Kgf-cm

Component	P/N	Qty
Screw	E43-1254503-G68	2



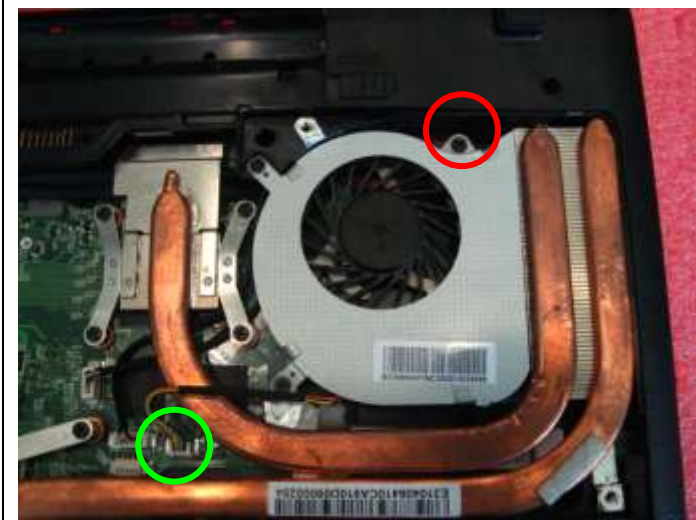
3.2: Remove the 2 screws (M3*3.5mm) that stabilize the HDD bracket, then remove the HDD bracket.

Attention: the screw driver torque is 3.0-3.5Kgf-cm

Component	P/N	Qty
Screw	E43-1303502-G68	2
HDD Bracket	307-6G10111-A89	1
HDD Module	S71-2475702-W36	1

GE70 (MS-1757) Disassembly Guide

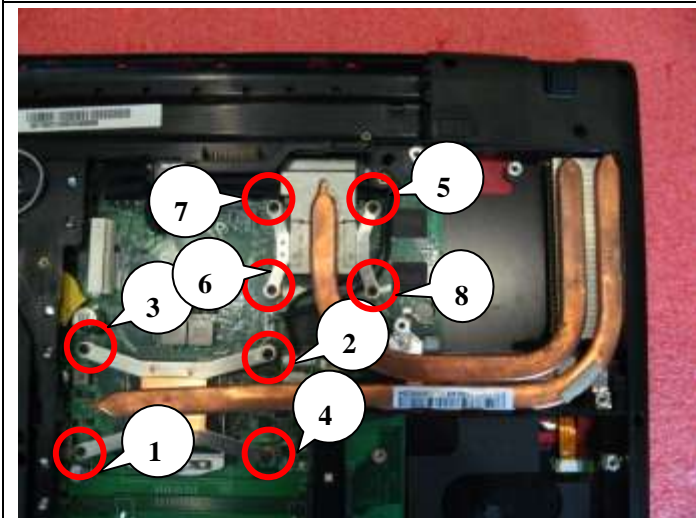
4、 THERMAL-KIT、 CPU 、 DRAM AND WIRELESS



4.1: Remove the 1 screws(M2.5*5.5mm) and FAN cable, after that remove the Fan.

Attention: the screw driver torque is 2.0-2.5Kgf-cm

Component	P/N	Qty
Screw	E43-1255501-H29	1
FAN	E33-0800413-MC2	1



4.2: Remove the 8 screws (M2.5*4.5mm), after that remove the Heatsink.

Attention: the screw driver torque is 2.0-2.2Kgf-cm

Component	P/N	Qty
Screw	E43-1254503-G68	8
Heatsink	E31-2500081-CA9	1

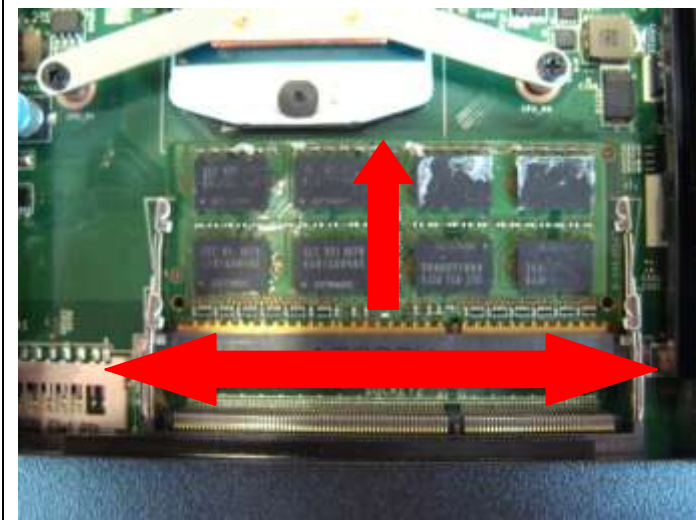


4.3: Open the CPU Slot with Screw Driver, then remove CPU Module as below.

Component	P/N	Qty
CPU	A13-24201G6-I06	1

GE70 (MS-1757) Disassembly Guide

4、 THERMAL-KIT、 CPU 、 DRAM AND WIRELESS



4.4: Push the two side shielding of RAM as pic shows; Then remove the RAM module according the direction as pic shows.

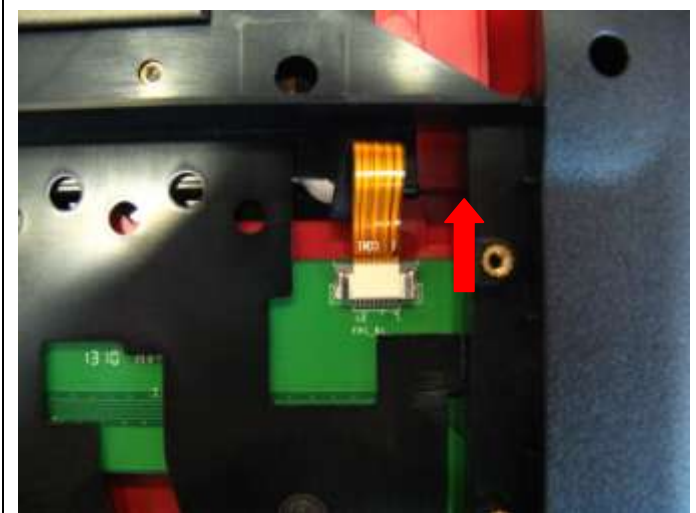
Component	P/N	Qty
RAM Module	S7C-S56AD01-K37	1



4.5: Remove 1 screw (M2*3mm); then remove the two side wireless card antenna as pic shows.

Attention: the screw driver torque is: 1.5-2.0Kgf-cm

Component	P/N	Qty
WLAN Module	S57-08000J0-T46	1
Screw	E43-1203003-G68	1



4.6: Disconnect LED Cable.

GE70 (MS-1757) Disassembly Guide

5、 ODD MODULE

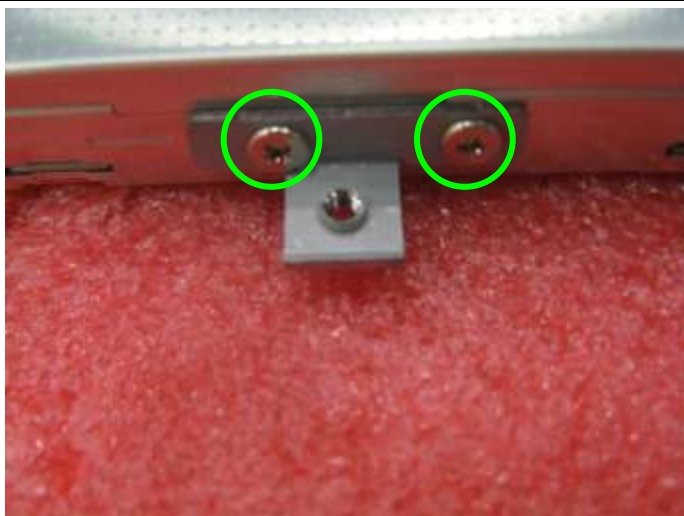


5.1: Remove the ODD Module according to the direction as pic shows.



5.2: Remove ODD Bezel as below.

Component	P/N	Qty
ODD Bezel	307-751F214-P89	1



5.3: Remove 2pcs (M2*3mm) Screws; Then remove ODD Bracket as below.

Attention: the screw driver torque is 1.5-2.0Kgf-cm

Component	P/N	Qty
Screw	E43-1203013-G68	2
ODD Bracket	E2M-6G10711-A89	1
ODD Module	S7D-2270076-T87	1

GE70 (MS-1757) Disassembly Guide

6、SEPARATE UPPER CASE AND LOWER CASE



6.1: Remove the Keyboard Upper cover.

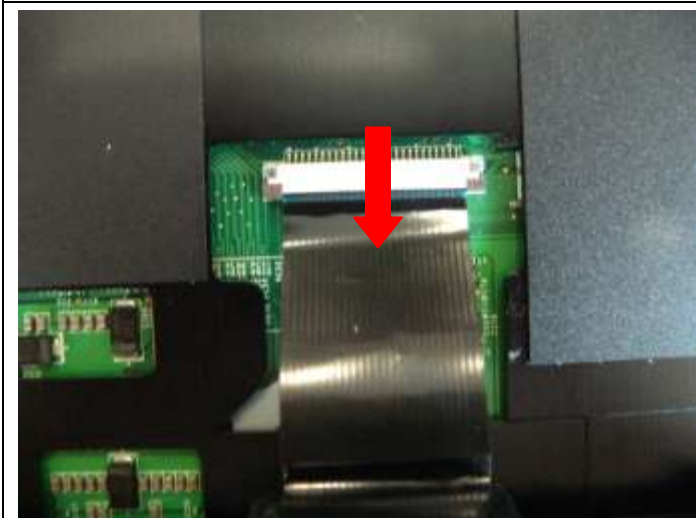
Component	P/N	Qty
K/B upper cover	E2P-7570211-G40	1



6.2: Remove 5pcs (M2*3.5mm) Screws; Then remove Keyboard.

Attention: the screw driver torque is 1.5-2.0Kgf-cm

Component	P/N	Qty
Screw	E43-1203501-G68	5

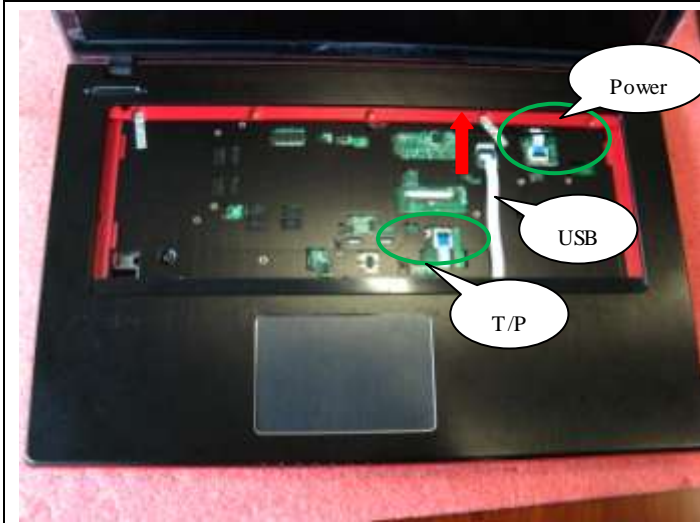


6.3: Firstly push connector according to the direction as pic shows; then remove the cable.

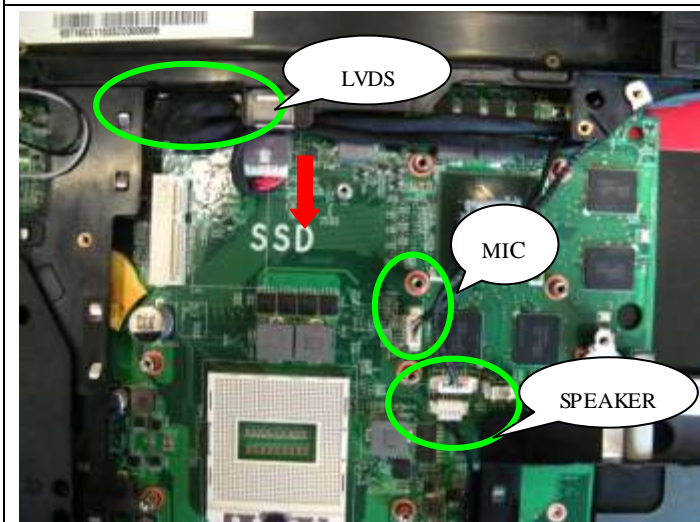
Component	P/N	Qty
Keyboard	S1N-3EUS214-SA0	1

GE70 (MS-1757) Disassembly Guide

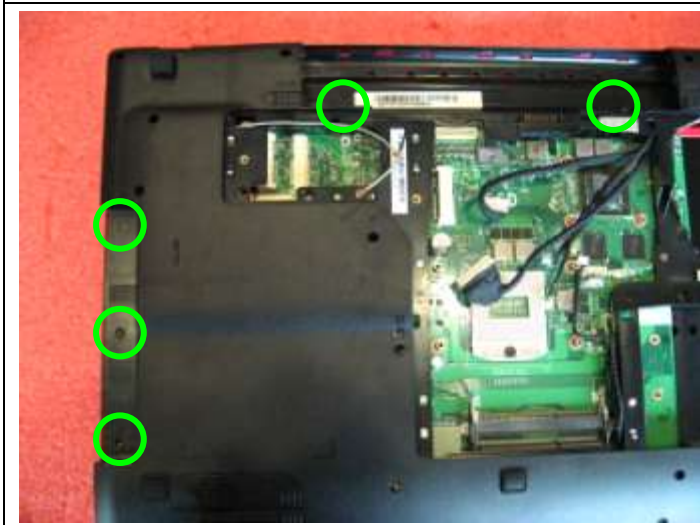
6、SEPARATE UPPER CASE AND LOWER CASE



6.4: Remove Power cable and USB cable & T/P cable.



6.5: Remove LVDS Cable & MIC Cable & DC Jack cable & Speaker cable.



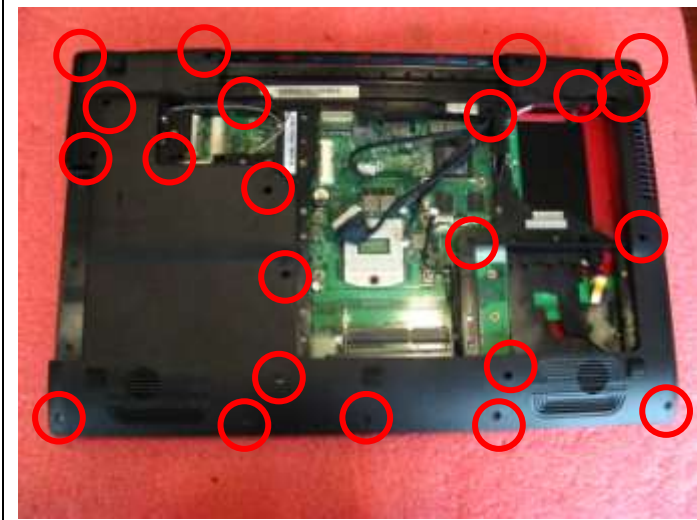
6.6: Remove 5 screws (M2*3.5mm).

Attention: the screw driver torque is 1.5-2.0Kgf-cm

Component	P/N	Qty
Screw	E43-1203501-G68	5

GE70 (MS-1757) Disassembly Guide

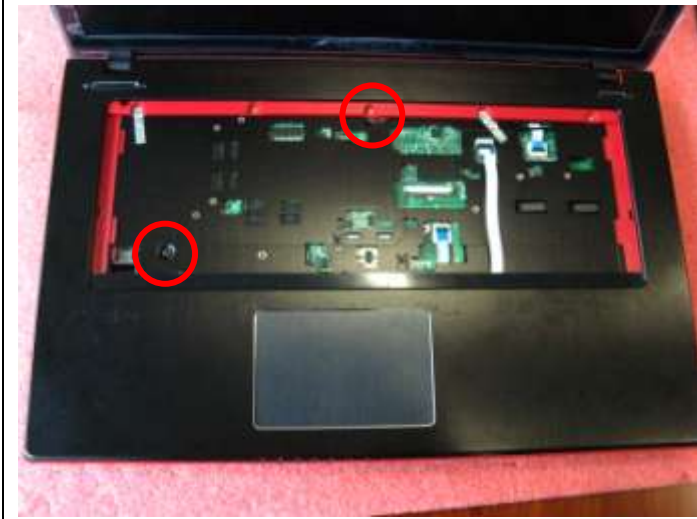
6、SEPARATE UPPER CASE AND LOWER CASE



6.7: Remove 23 screws (M2.5*5.5mm).

Attention: the screw driver torque is 2.0-2.5Kgf-cm

Component	P/N	Qty
Screw	E43-1255501-H29	23



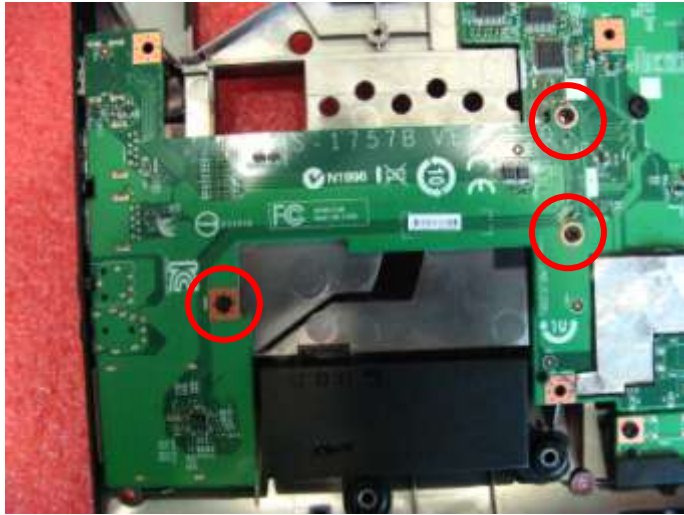
6.8: Remove 2 pcs (M2.5*5.5mm) Screws; Then remove upper case.

Attention: the screw driver torque is 1.5-2.0Kgf-cm

Component	P/N	Qty
Screw	E43-1255501-H29	2
Upper case	307-757C213-Y31	1

GE70 (MS-1757) Disassembly Guide

7、 LOWER CASE ASSY



7.1: Remove the 3screws (M2.5*4.5mm).then remove the HMI/USB/AUDIO board.

Attention: the screw driver torque is 2.0-2.5Kgf-cm

Component	P/N	Qty
screw	E43-1254503-G68	3
HMI/USB/AUDIO board	607-1757B-01S	1



7.2: Remove the 2screws (M2.5*4.5mm).then remove the Touch/LED Board.

Attention: the screw driver torque is 2.0-2.5Kgf-cm

Component	P/N	Qty
screw	E43-1254503-G68	2
Touch/LED Board	607-1757D-01S	1



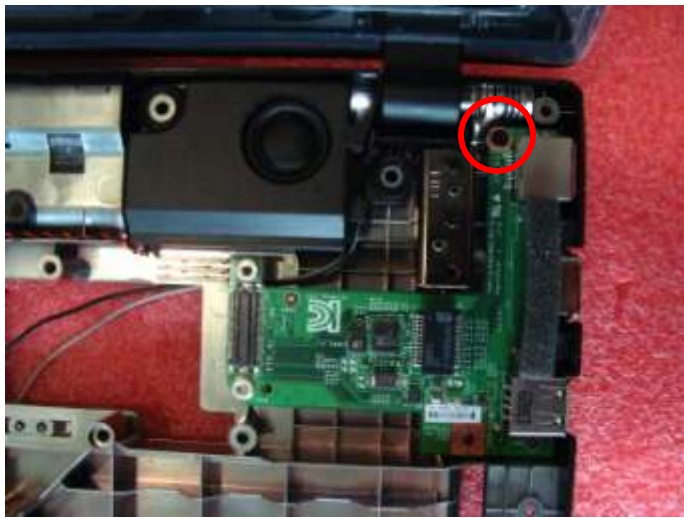
7.3:Remove the 3 screws (M2.5*4.5mm).then remove the main board.

Attention: the screw driver torque is 2.0-2.5Kgf-cm

Component	P/N	Qty
screw	E43-1254503-G68	3
Main board	607-17571-01S	1

GE70 (MS-1757) Disassembly Guide

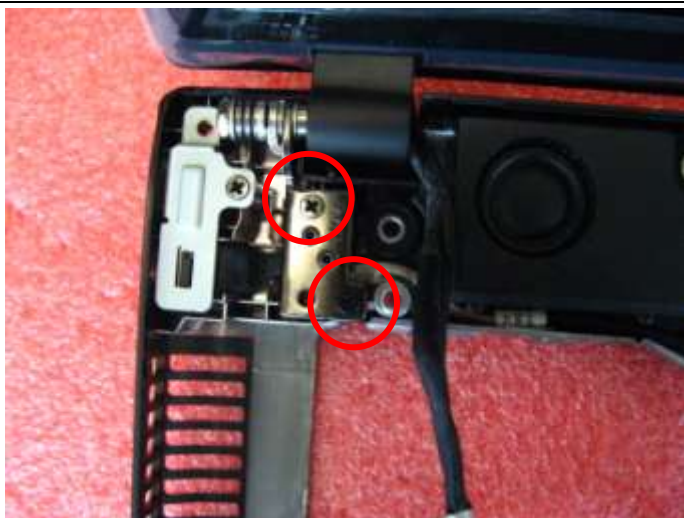
7、 LOWER CASE ASSY



7.4: Remove 1 screw (M2.5*4.5mm); then remove the USB/CRT/LAN board

Attention: the screw driver torque is: 2.0-2.5Kgf-cm

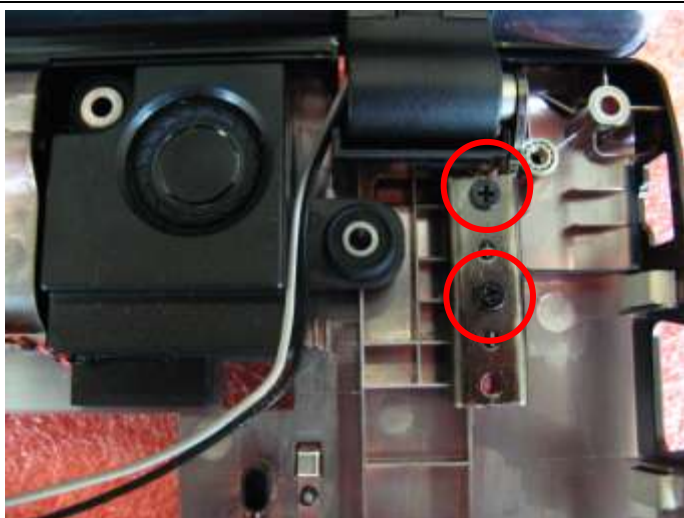
Component	P/N	Qty
USB/CRT/LAN board	607-1757A-01S	1
Screw	E43-1254503-G68	1



7.5: Remove the 2 screws (M2.5*5.5mm) that stabilize the left LCD hinge.

Attention: the screw driver torque is 2.5-3.0Kgf-cm

Component	P/N	Qty
Screw	E43-1255501-H29	2



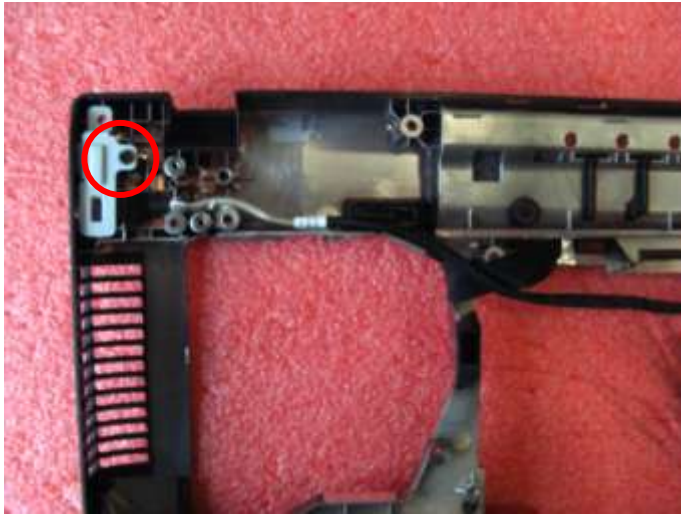
7.6: Remove the 2 screws (M2.5*5.5mm) that stabilize the right LCD hinge.

Attention: the screw driver torque is 2.5-3.0Kgf-cm

Component	P/N	Qty
Screw	E43-1255501-H29	2

GE70 (MS-1757) Disassembly Guide

7、 LOWER CASE ASSY



7.7: Remove the 1screw (M2.5*5.5mm), then remove the bracket , finally remove the DC IN

Attention: the screw driver torque is 2.5-3.0Kgf-cm

Component	P/N	Qty
Screw	E43-1255501-H29	2
DC IN	K10-3004183-H39	1



7.8: Remove the Speaker module from lower case

Component	P/N	Qty
Speaker	S33-A020261-F33	1
Lower Case	307-751D219-P89	1

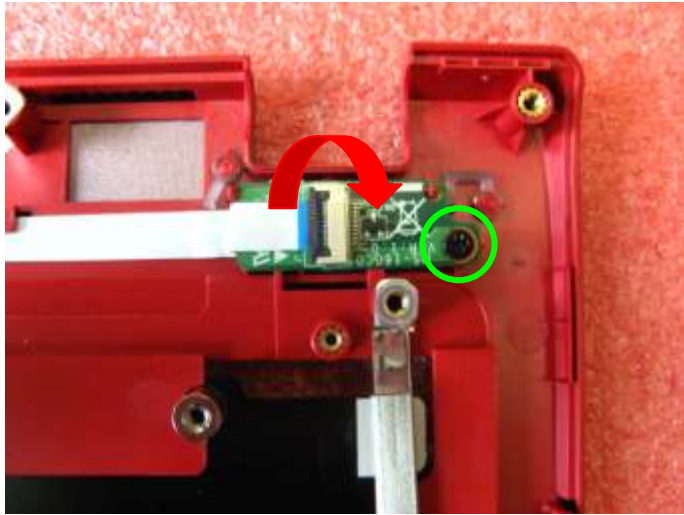


7.9: Remove the Speaker module

Component	P/N	Qty
Speaker	S33-A020270-F33	1

GE70 (MS-1757) Disassembly Guide

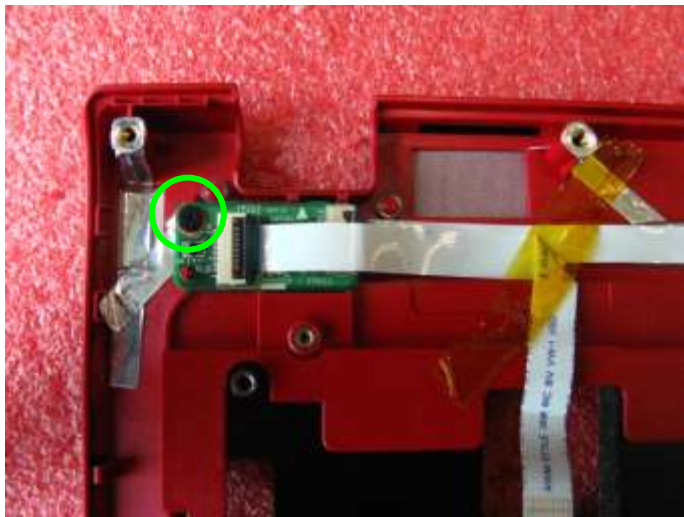
8、UPPER CASE ASSY



8.1: Remove 1 screws (M2.5*4.5), then remove the Launch board.

Attention: the screw driver torque is 1.5-2.0Kgf-cm

Component	P/N	Qty
screw	E43-1254503-G68	1
Launch board	607-1757F-01S	1



8.2: Remove 1 screws (M2.5*4.5), then remove the Power board.

Attention: the screw driver torque is 1.5-2.0Kgf-cm

Component	P/N	Qty
screw	E43-1254503-G68	1
Power board	607-1757C-01S	1

GE70 (MS-1757) Disassembly Guide

8、UPPER CASE ASSY



8.3: Remove 1 screws (M2*3.5mm), then remove the USB board.

Attention: the screw driver torque is 1.5-2.0Kgf-cm

Component	P/N	Qty
screw	E43-1203501-G68	1
USB board	607-1757E-01S	1



8.4: Remove 4 screws (M2*3mm), after that remove the T/P module.

Component	P/N	Qty
Screw	E43-1203013-G68	1
Touchpad Module	S78-3700830-E47	1

GE70 (MS-1757) Disassembly Guide

9、 LCD MODULE ASSY



9.1: When removing the LCD bezel, should begin from the upside, then the two sides to downside.

Component	P/N	Qty
LCD Bezel	307-751B233-U22	1



9.2 : Remove the 1 screw (M2.5*4.5mm), then remove the left hinge cap.

Attention: the screw driver torque is 1.2-1.5Kgf-cm

Component	P/N	Qty
HINGE CAP_L	E2P-7510812-P89	1
screw	E43-1254503-G68	1



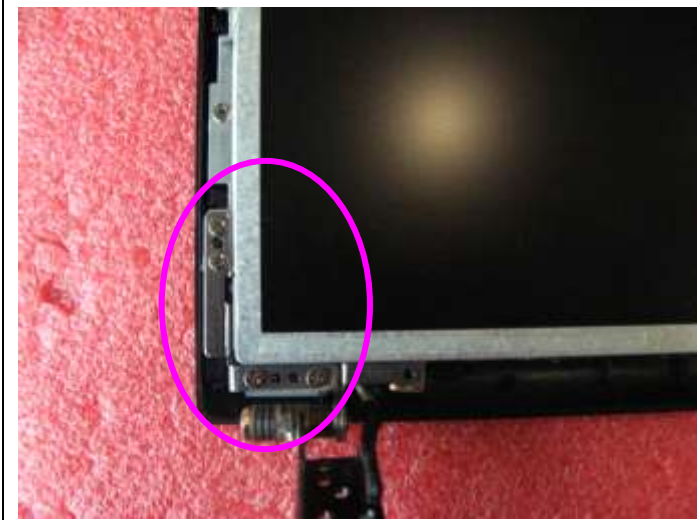
9.3 : Remove the 1 screw (M2.5*4.5mm), then remove the right hinge cap.

Attention: the screw driver torque is 1.2-1.5Kgf-cm

Component	P/N	Qty
HINGE CAP_R	E2P-7510912-P89	1
screw	E43-1254503-G68	1

GE70 (MS-1757) Disassembly Guide

9、 LCD MODULE ASSY



9.4: Remove 4 screws (M2.5*4.5mm) that stabilize the left hinge.

Attention: the screw driver torque is 3.0-3.5Kgf-cm

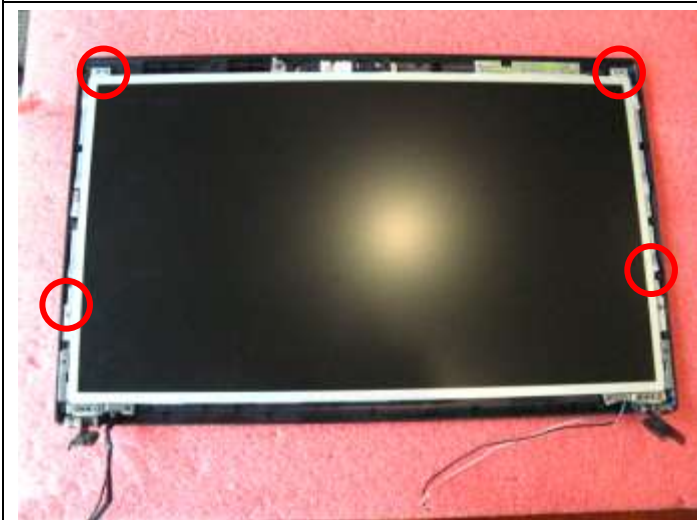
Component	P/N	Qty
screw	E43-1254503-G68	2
Hinge L	E2M-7570111-G60	1



9.5: Remove 4 screws (M2.5*4.5mm) that stabilize the right hinge.

Attention: the screw driver torque is 3.0-3.5Kgf-cm

Component	P/N	Qty
screw	E43-1254503-G68	3
Hinge R	E2M-7570211-G60	1



9.6: Remove the 4 screws (M2.5*4.5mm), then remove the camera cable and remove the display module from LCD cover.

Attention: the screw driver torque is 3.0-3.5Kgf-cm

Component	P/N	Qty
Screw	E43-1254503-G68	4

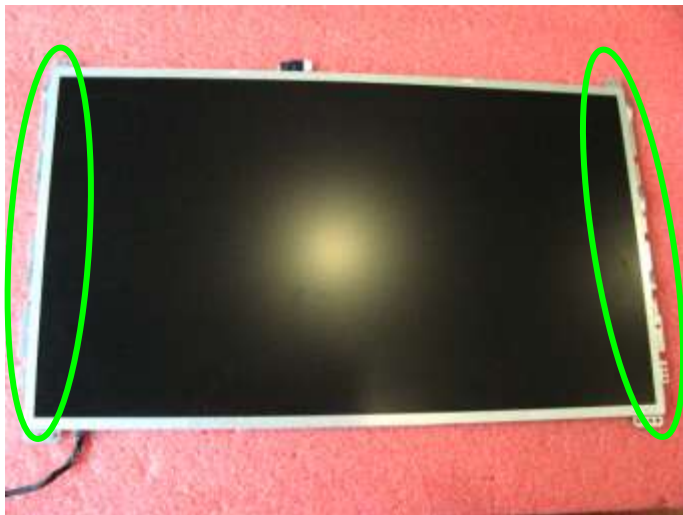
GE70 (MS-1757) Disassembly Guide

9、 LCD MODULE ASSY



9.7: Remove the LVDS cable from display module

Component	P/N	Qty
LVDS Cable	K19-3040026-H39	1



9.8: Remove the 8 screws (M2*3mm).

Attention: the screw driver torque is 1.5-2.0Kgf-cm

Component	P/N	Qty
Display Module	S1J-7E0A004-CC1	1
LCD BRACKET-L	E2M-7510611-C22	1
LCD BRACKET-R	E2M-7510711-C22	1
Screw	E43-1203013-G68	8

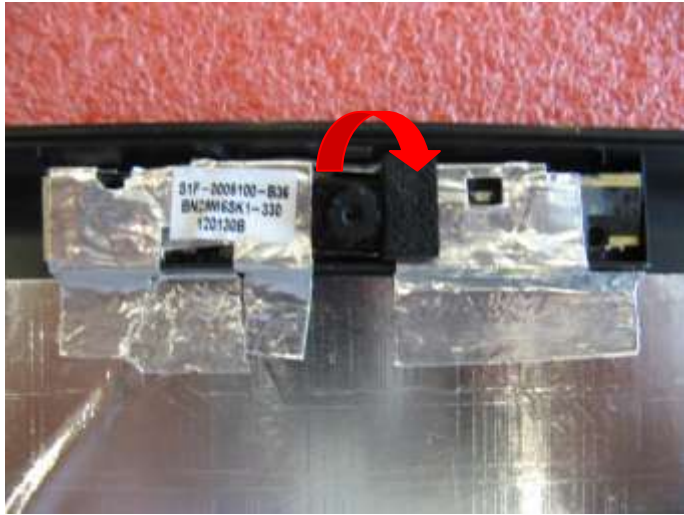


9.9: Remove the MIC Module as left picture show

Component	P/N	Qty
MIC Module	S34-2101240-N44	1

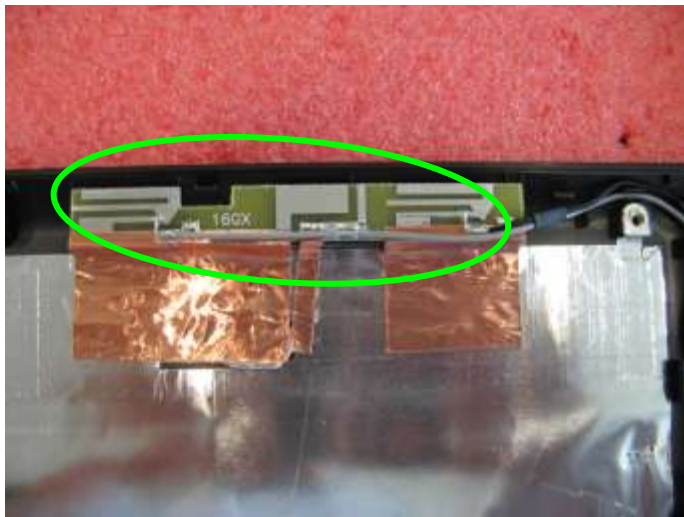
GE70 (MS-1757) Disassembly Guide

9、 LCD MODULE ASSY



9.10: Remove the CMOS camera module according to the sequence as pic shows.

Component	P/N	Qty
Camera Module	S1F-0005100-B36	1



9.11: Remove the WIRELESS Antenna board from LCD Cover.

Component	P/N	Qty
Antenna	S79-1801280-V03	1
LCD Cover	307-757A212-P89	1