

# **CR640&CX640 (MS-16Y1) Disassembly Guide**

- 1、 BATTERY PACK
- 2、 BOTTOM DOOR ASSY
- 3、 HDD MODULE
- 4、 THERMAL-KIT、 CPU、 DRAM AND WIRELESS
- 5、 ODD MODULE
- 6、 SEPARATE UPPER CASE AND LOWER CASE
- 7、 LOWER CASE ASSY
- 8、 UPPER CASE ASSY
- 9、 LCD MODULE ASSY

# CR640&CX640 (MS-16Y1) Disassembly Guide

## 1、 BATTERY PACK



1.1: Move the "Unlock" button base on left picture shows.

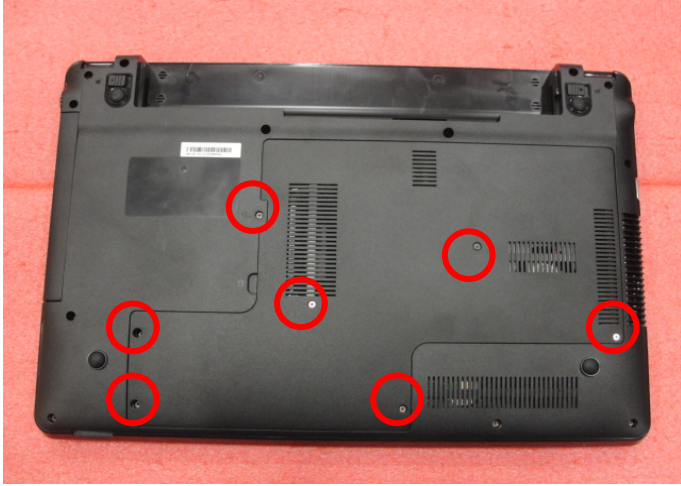


1.2: Release the "Release" button and move the battery pack base on left picture.

Component	P/N	Qty
Battery Pack	0B20-00X3000	1

# CR640&CX640 (MS-16Y1) Disassembly Guide

## 2、BOTTOM DOOR ASSY



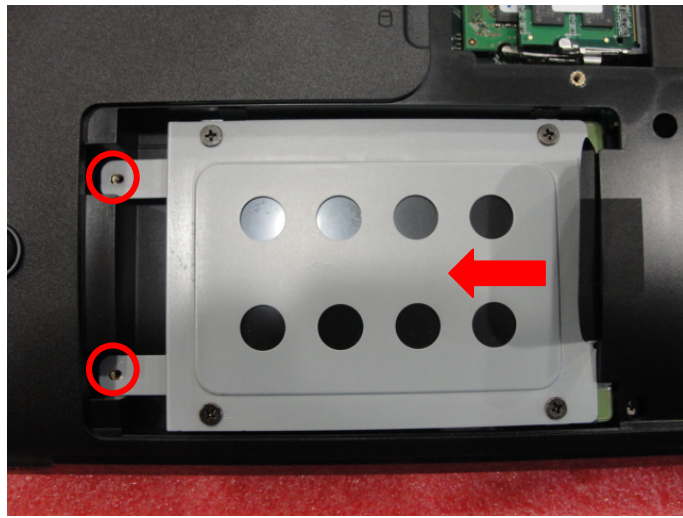
2.1: Remove the 7screws (M2.5\*5mm). Then remove the Bottom door.

**Attention: the screw driver torque is: 2.0-2.5 gf-cm**

Component	P/N	Qty
Bottom door	13N0-Y2P0501	1
Screw	131B-001F000	7

# CR640&CX640 (MS-16Y1) Disassembly Guide

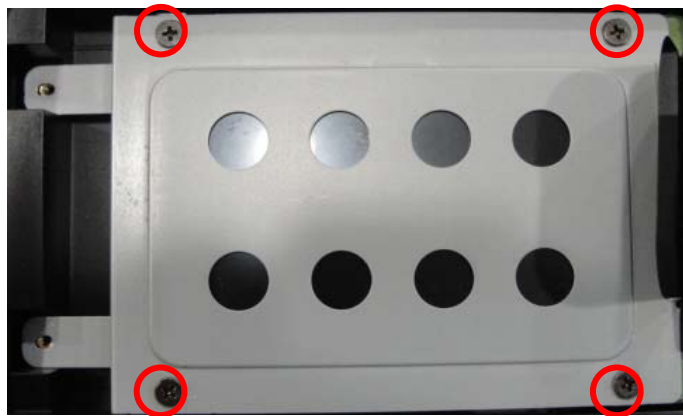
## 3、HDD MODULE



3.1: Remove the 2 screws (M2.5\*5mm); then remove the HDD Module according to the direction as pic shows.

**Attention: the screw driver torque is 2.0-2.5Kgf-cm**

Component	P/N	Qty
Screw	131B-0025000	2



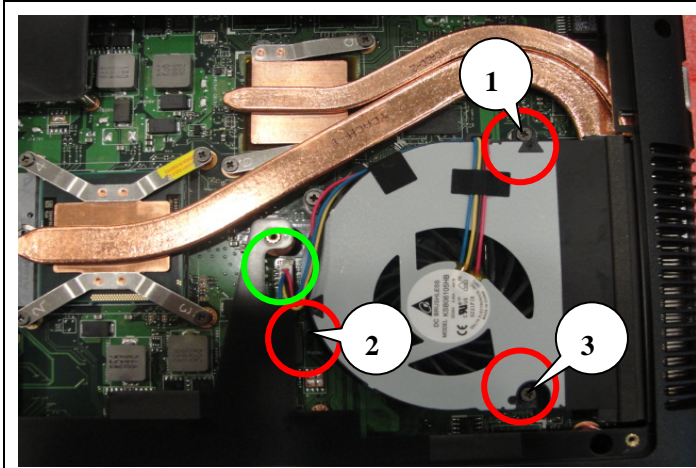
3.2: Remove the 4 screws (M3\*3.5mm) that stabilize the HDD bracket, then remove the HDD bracket.

**Attention: the screw driver torque is 3.0-3.5Kgf-cm**

Component	P/N	Qty
Screw	131B-002H000	4
HDD Bracket	13N0-XXA0801	1

# CR640&CX640 (MS-16Y1) Disassembly Guide

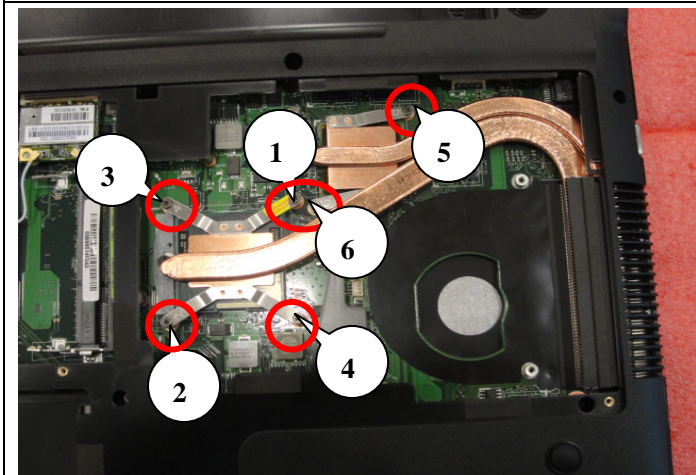
## 4、 THERMAL-KIT、 CPU 、 DRAM AND WIRELESS



4.1: Remove the 3 screws (M2.5\*4mm) and FAN cable, after that remove the Fan.

**Attention:** the screw driver torque is 2.0-2.5Kgf-cm

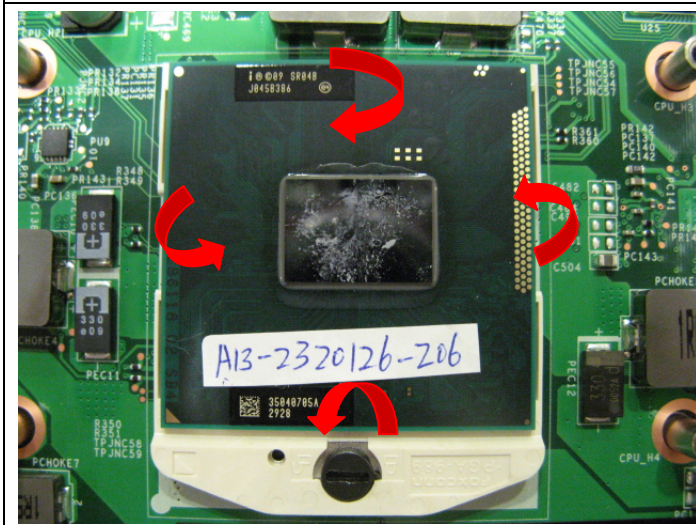
Component	P/N	Qty
Screw	131B-0025000	3
FAN	13N0-XTA0201	1



4.2: Remove the 6 screws (M2.5\*4mm), after that remove the Heatsink.

**Attention:** the screw driver torque is 2.0-2.2Kgf-cm

Component	P/N	Qty
Screw	131B-0025000	6
Heatsink	13N0-XXA0A01	1

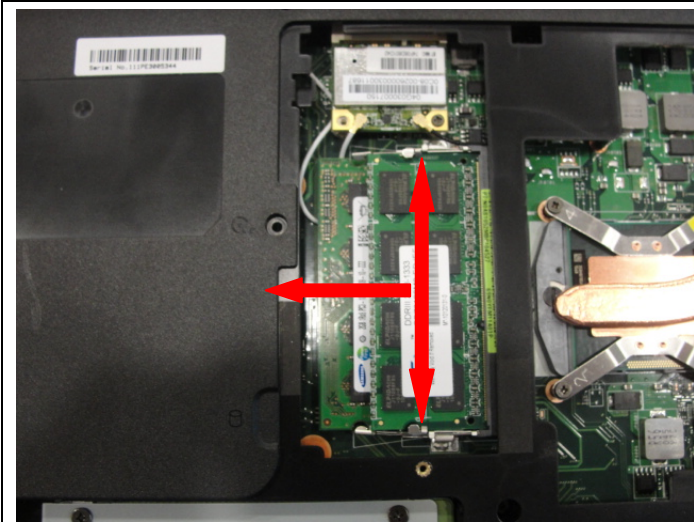


4.3: Open the CPU Slot with Screw Driver, then remove CPU Module as below.



## CR640&CX640 (MS-16Y1) Disassembly Guide

### 4、 THERMAL-KIT、 CPU 、 DRAM AND WIRELESS



4.4: Push the two side shielding of RAM as pic shows; Then remove the RAM module according the direction as pic shows.

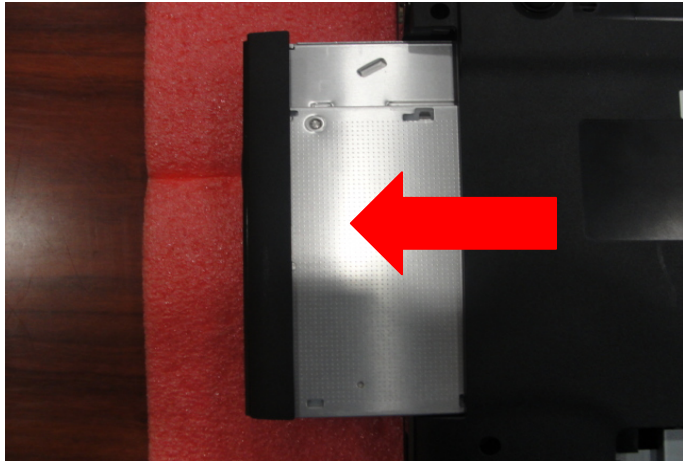


4.5: Remove 1 screw (M2\*3mm); then remove the two side wireless card antenna as pic shows.

**Attention: the screw driver torque is: 1.5-2.0Kgf-cm**

# CR640&CX640 (MS-16Y1) Disassembly Guide

## 5、 ODD MODULE



5.1: Remove the ODD Module according to the direction as pic shows.



5.2: Remove ODD Bezel as below.

Component	P/N	Qty
ODD Bezel	0B20-00X3000	1



5.3: Remove 2pcs (M2\*3mm) Screws; Then remove ODD Bracket as below.

**Attention: the screw driver torque is 1.5-2.0Kgf-cm**

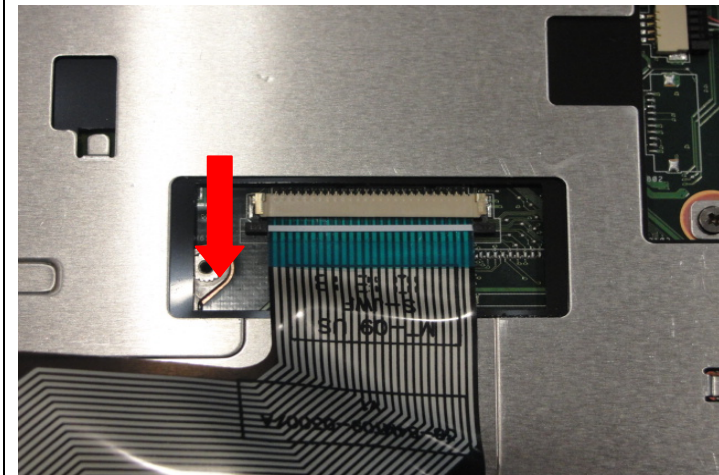
Component	P/N	Qty
Screw	131B-0013000	2
ODD Bracket	13N0-3AM0K01	1

# CR640&CX640 (MS-16Y1) Disassembly Guide

## 6、SEPARATE UPPER CASE AND LOWER CASE

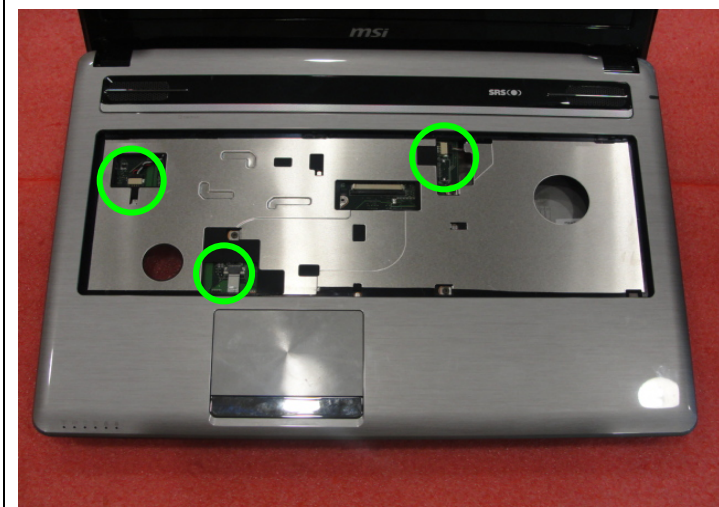


6.1: Remove the Keyboard. firstly from upside, then left side to right side, last remove down side.



6.2 : Firstly push connector according to the direction as pic shows; then remove the cable.

Component	P/N	Qty
Keyboard	0KN0-XV1US18	1

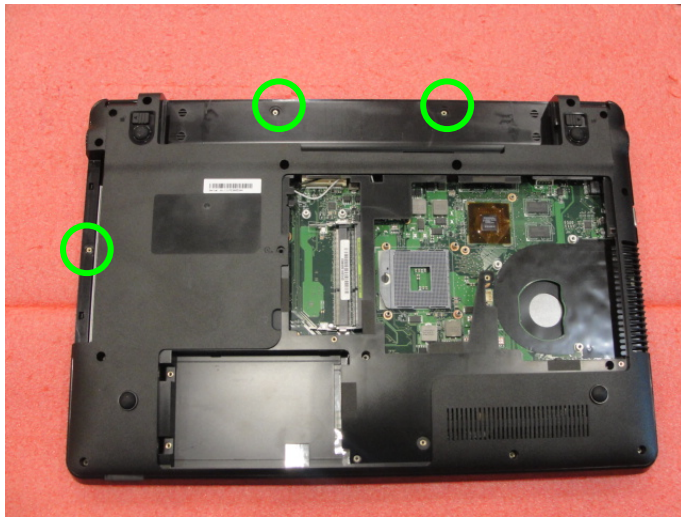


6.3: Remove the cable.



# CR640&CX640 (MS-16Y1) Disassembly Guide

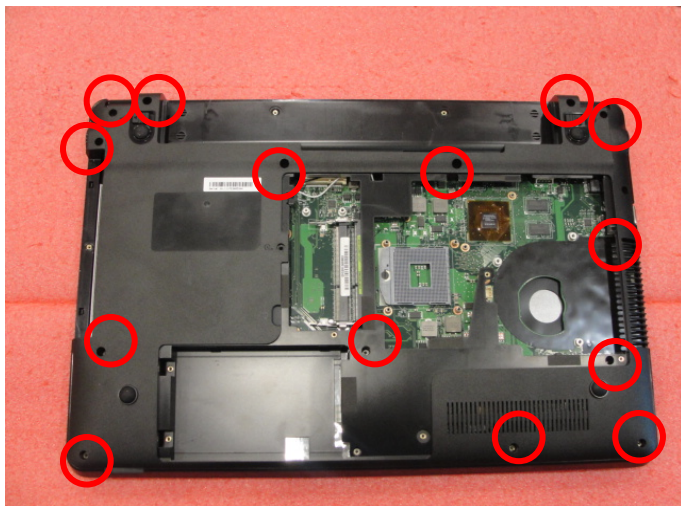
## 6、SEPARATE UPPER CASE AND LOWER CASE



6.4: Remove 3 screws (M2\*2mm).

Attention: the screw driver torque is 1.5-2.0Kgf-cm

Component	P/N	Qty
Screw	131B-00J0000	3



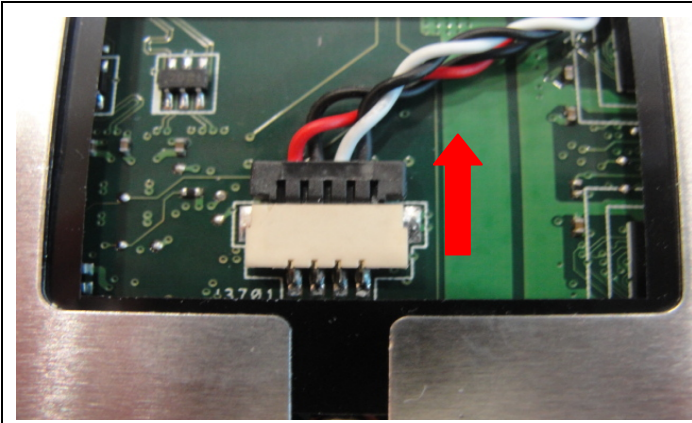
6.5: Remove the 14 screws (M2.5\*5mm) .

Attention: the screw driver torque is 2.0-2.5Kgf-cm

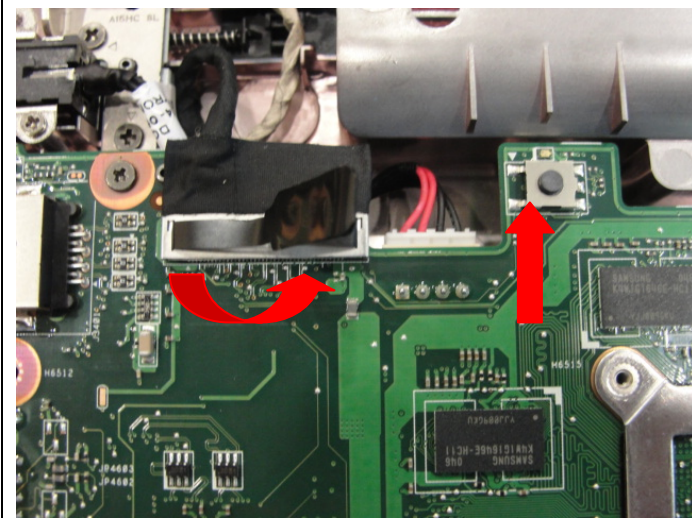
Component	P/N	Qty
Screw	131B-001F000	14

# CR640&CX640 (MS-16Y1) Disassembly Guide

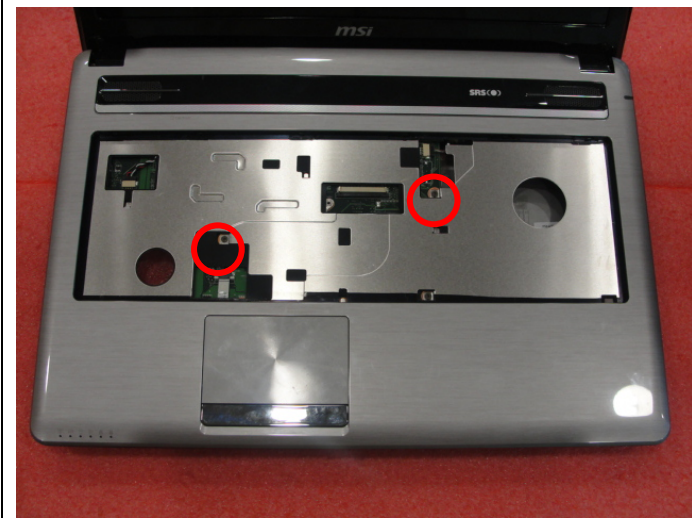
## 6、SEPARATE UPPER CASE AND LOWER CASE



6.6: Remove the speaker and MIC cable.



6.7: Remove the LVDS and power cable as pic shows.



6.8: Remove the 2 screws (M2.5\*4mm). then remove the upper case.

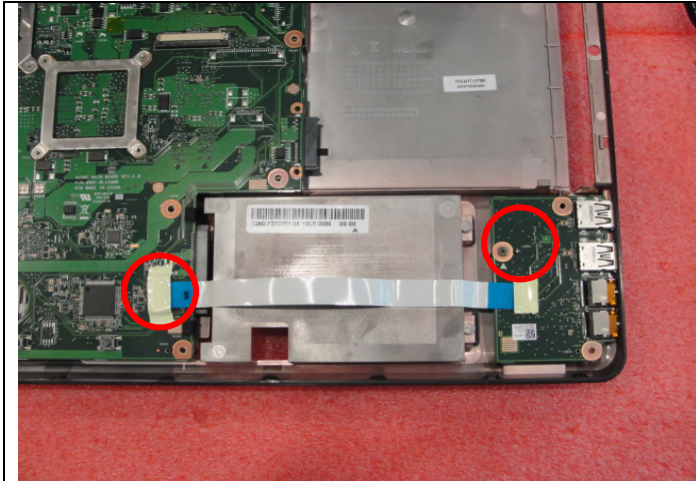
**Attention: the screw driver torque is 2.0-2.5Kgf-cm**

Component	P/N	Qty
Screw	131B-0025000	2



# CR640&CX640 (MS-16Y1) Disassembly Guide

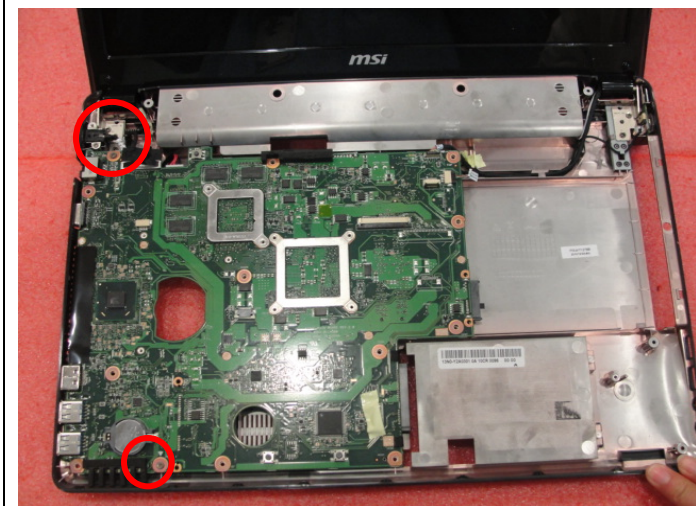
## 7、 LOWER CASE ASSY



7.1 : Remove the 3screws (M2.5\*4mm).then remove the IO board.

Attention: the screw driver torque is 2.0-2.5Kgf-cm

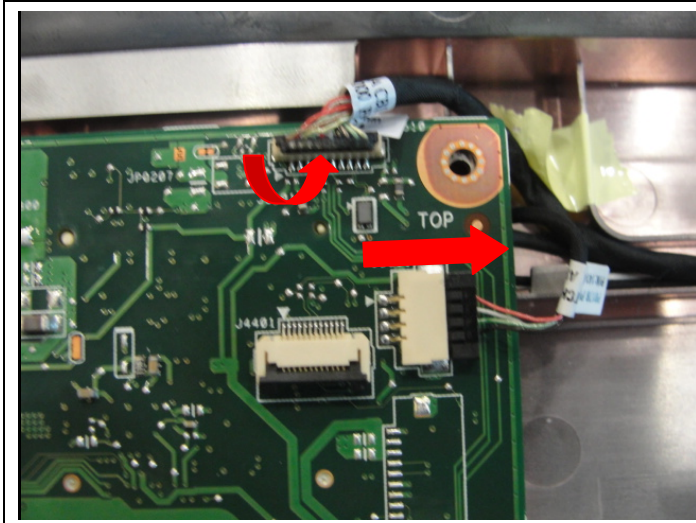
Component	P/N	Qty
screw	131B-0025000	1
IO board	69N0XXB10C01P	1



7.2 : Remove the 2screws (M2.5\*4mm).then remove the main board.

Attention: the screw driver torque is 2.0-2.5Kgf-cm

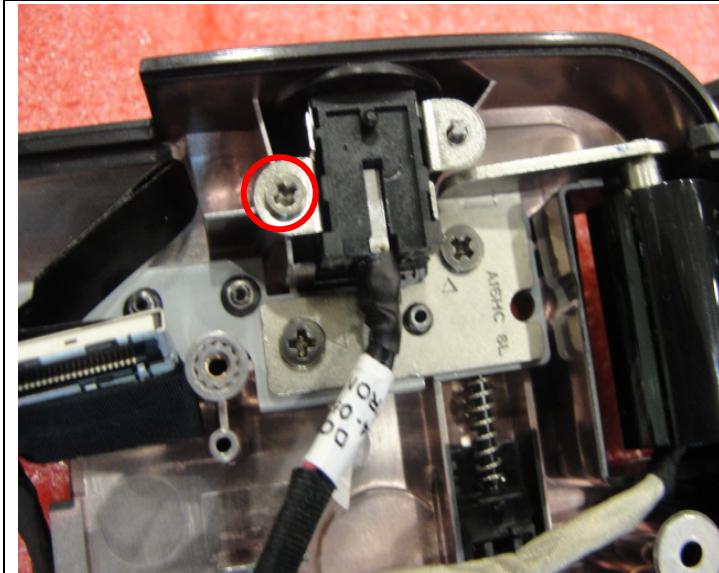
Component	P/N	Qty
screw	131B-0025000	2
Main board	69N0YEM11A01P	1



7.3: Remove the Bluetooth cable.

# CR640&CX640 (MS-16Y1) Disassembly Guide

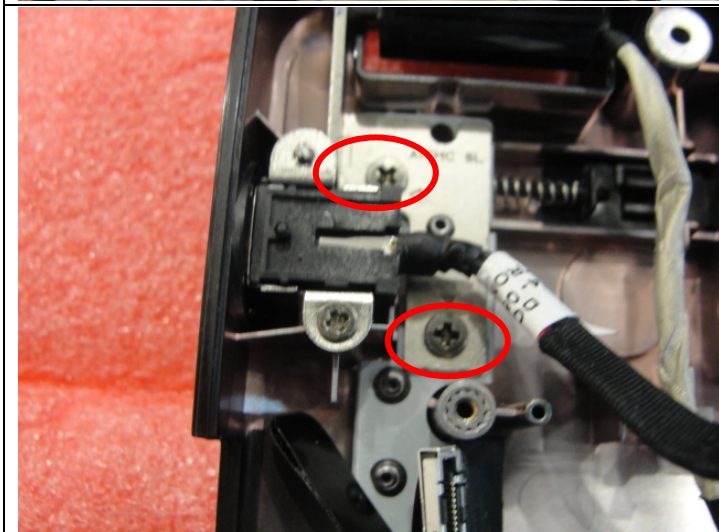
## 7、LOWER CASE ASSY



7.4: Remove 1 screw (M2.5\*4mm); then remove the Lan board.

**Attention: the screw driver torque is: 2.0-2.5Kgf-cm**

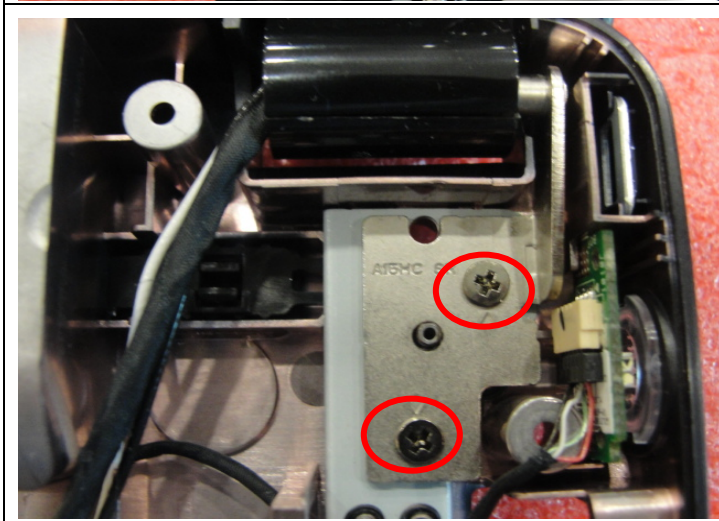
Component	P/N	Qty
Screw	131B-0025000	1



7.5: Remove the 2 screws (M2.5\*5mm) that stabilize the left LCD hinge.

**Attention: the screw driver torque is 2.5-3.0Kgf-cm**

Component	P/N	Qty
Screw	131B-001F000	2



7.6: Remove the 2 screws (M2.5\*5mm) that stabilize the right LCD hinge.

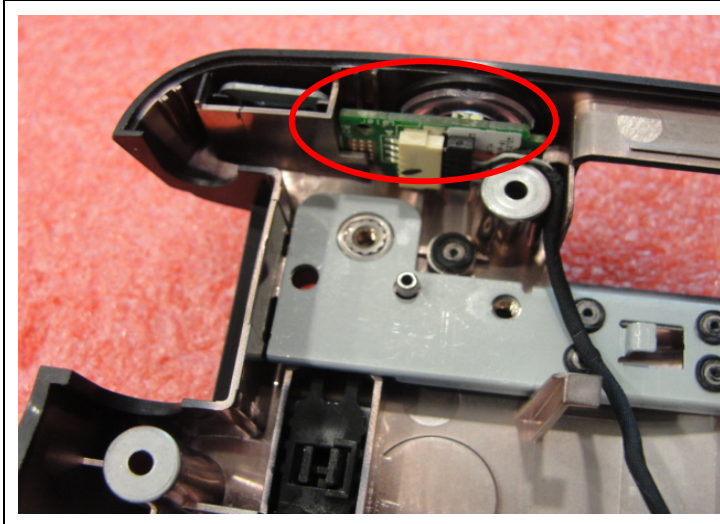
**Attention: the screw driver torque is 2.5-3.0Kgf-cm**

Component	P/N	Qty
Screw	131B-001F000	2



# CR640&CX640 (MS-16Y1) Disassembly Guide

## 7、LOWER CASE ASSY



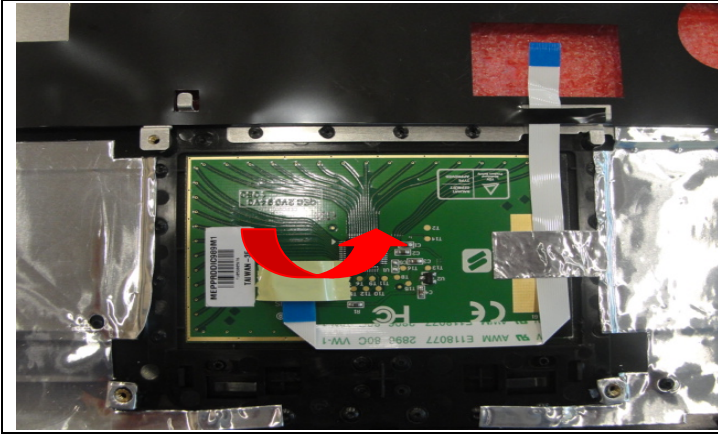
7.7 : Remove the 1screw (M2.5\*5mm), then remove the power conn.

Attention: the screw driver torque is 2.5-3.0Kgf-cm

Component	P/N	Qty
Screw	69N0YCC10B01P	1

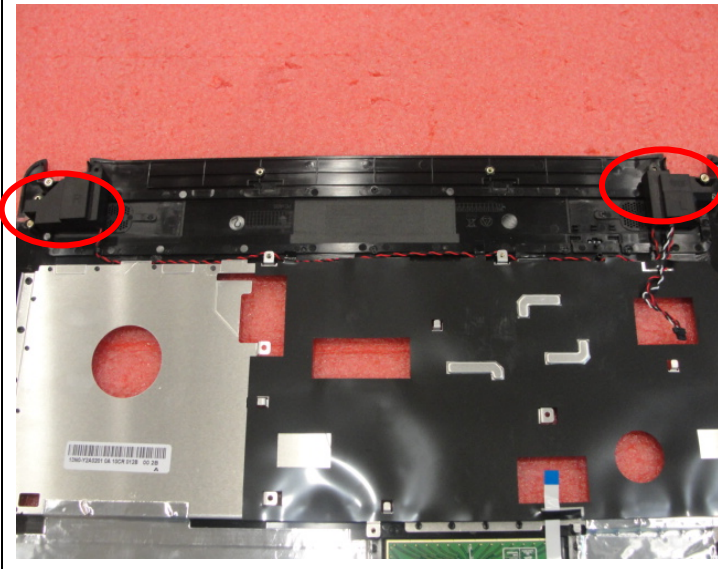
# CR640&CX640 (MS-16Y1) Disassembly Guide

## 8、UPPER CASE ASSY



8.1: Release the connector that stabilize the T/P Cable, then remove the T/P module.

Component	P/N	Qty
Touchpad Module	04A1-006D000	1



8.2: Remove Speaker.

# CR640&CX640 (MS-16Y1) Disassembly Guide

## 9、 LCD MODULE ASSY



9.1: Remove the 6 cover rubber.

Component	P/N	Qty
Screw	131B-0025000	6



9.2: When removing the LCD bezel, should begin from the upside, then the two sides to downside.

Component	P/N	Qty
LCD Bezel	13N0-Y2A0101	1



9.3: Remove the 1 screw (M2.5\*4mm), then remove the left hinge cap.

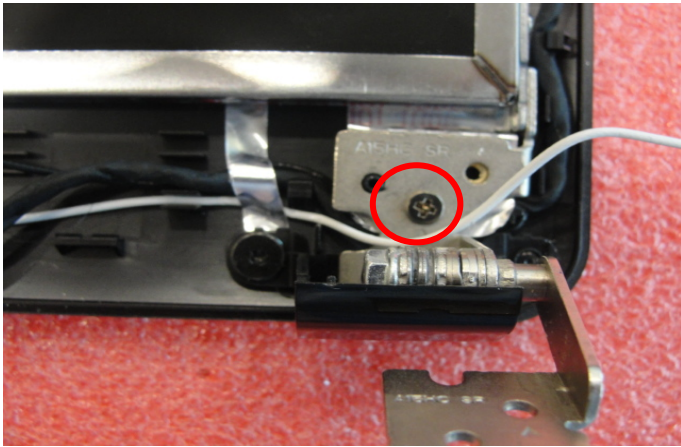
**Attention: the screw driver torque is 1.2-1.5Kgf-cm**

Component	P/N	Qty
screw	131B-001F000	1



# CR640&CX640 (MS-16Y1) Disassembly Guide

## 9、 LCD MODULE ASSY



9.4: Remove the 1 screw (M2.5\*4mm), then remove the right hinge cap.

Attention: the screw driver torque is 1.2-1.5Kgf-cm

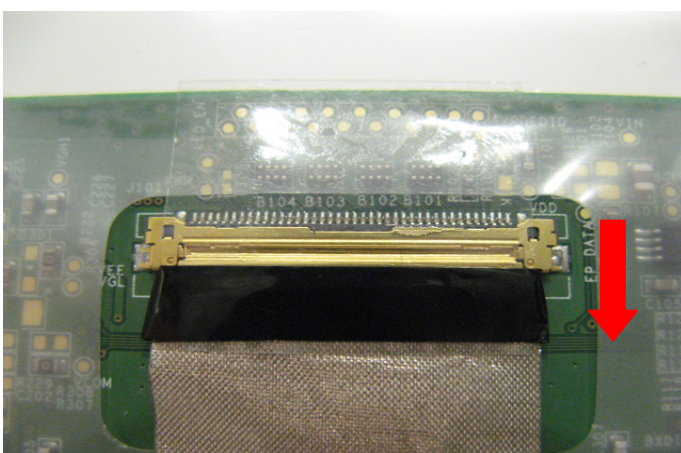
Component	P/N	Qty
screw	131B-001F000	1



9.5: Remove the 2 screws (M2.5\*4mm), then remove the camera cable and remove the display module from LCD cover.

Attention: the screw driver torque is 3.0-3.5Kgf-cm

Component	P/N	Qty
Screw	131B-001F000	2



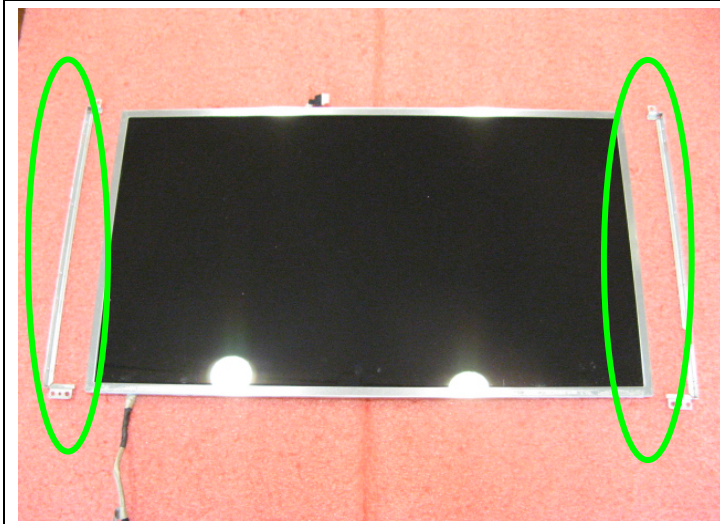
9.6: Remove LVDS cable.

Component	P/N	Qty
LVDS Cable	1422-00WD000	1



# CR640&CX640 (MS-16Y1) Disassembly Guide

## 9、 LCD MODULE ASSY



9.7: Remove the 8 screws (M2\*3mm)

Attention: the screw driver torque is 1.5-2.0Kgf-cm

Component	P/N	Qty
Display Module	OS1-168X001	1
LCD BRACKET-L	13N0-XXM0302	1
LCD BRACKET-R	13N0-XXM0201	1
Screw	131B-0013000	8



9.8: Remove the MIC Module as left picture show


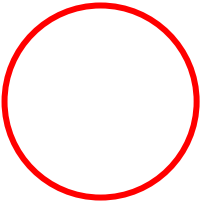

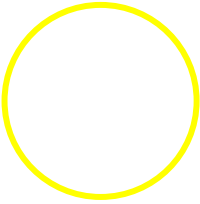

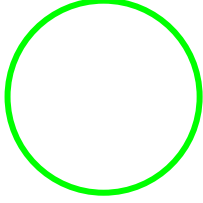

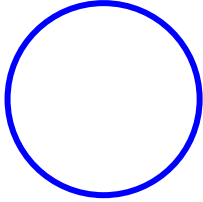

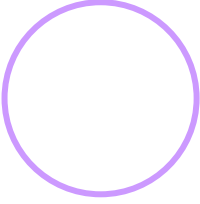

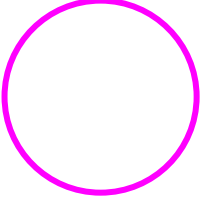
Component	P/N	Qty
Camera Module	0420-006W000	1



9.9: Remove the WIRELESS Antenna board from LCD Cover.

Component	P/N	Qty
Antenna	1415-01KJ000	1
LCD Cover	13N0-Y2A0301	1

## CR640&CX640 (MS-16Y1) screws specification

Photo	Screw specification	Label
	(M2*L2MM)black	
	(M2.5*L5MM)black	
	(M2.5*L8MM) black	
	(M3*L3MM) black	
	(M2*L3MM) black	
	(M2.5*L4MM) black	



# CR640&CX640 (MS-16Y1) screws specification

■ 1、BOTTOM ASSY total 21pcs screws

■ specification :

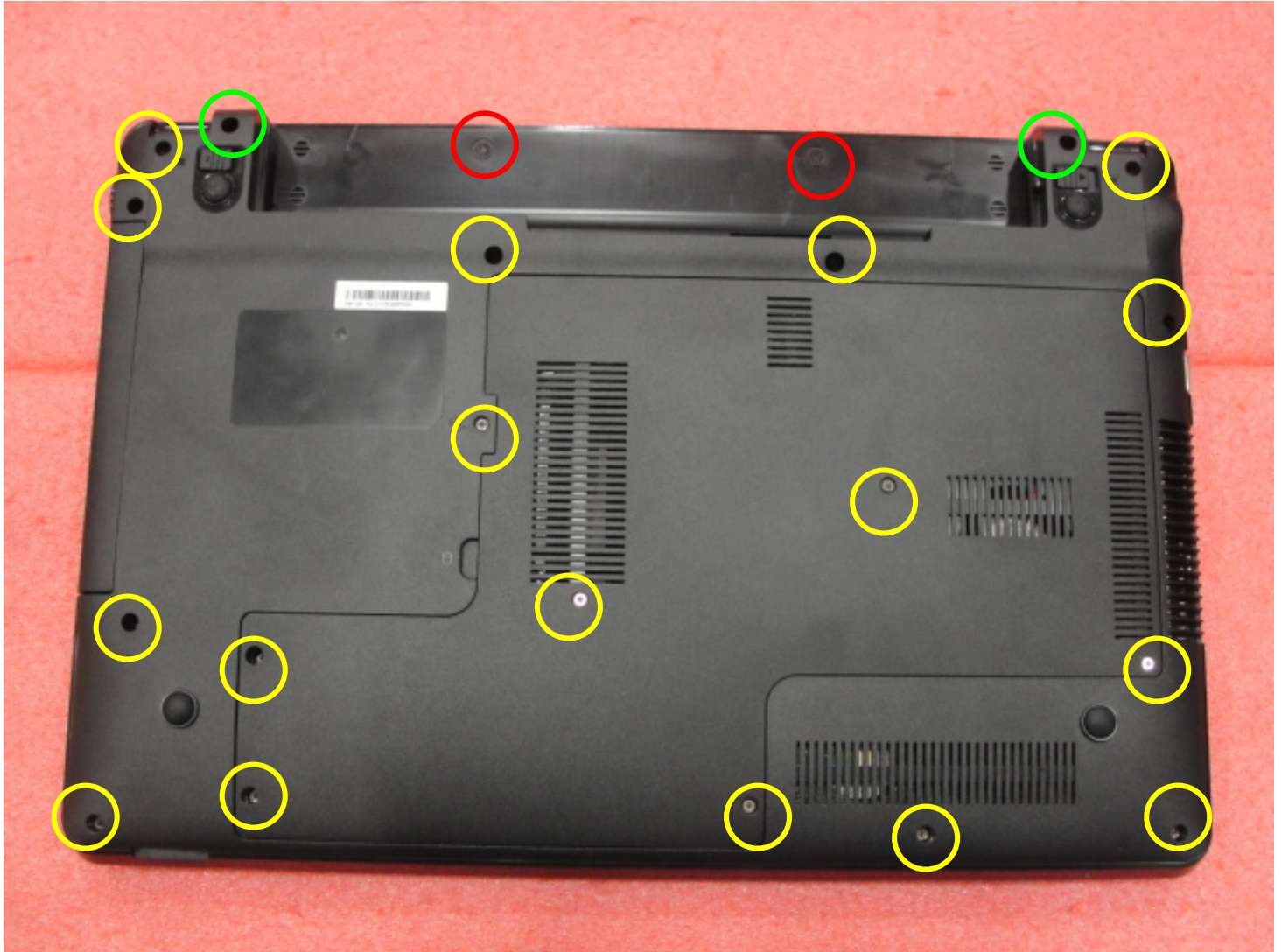

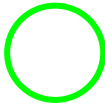
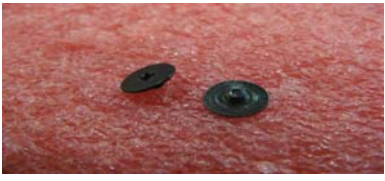
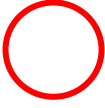

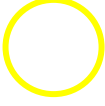


Photo	Screw specification	label
	(M2.5*L8MM) black	
	(M2*L2MM)black	
	(M2.5*L5MM)black	

# CR640&CX640 (MS-16Y1) screws specification

- 2 - THERMAL-KIT total 9pcs screws
- specification :

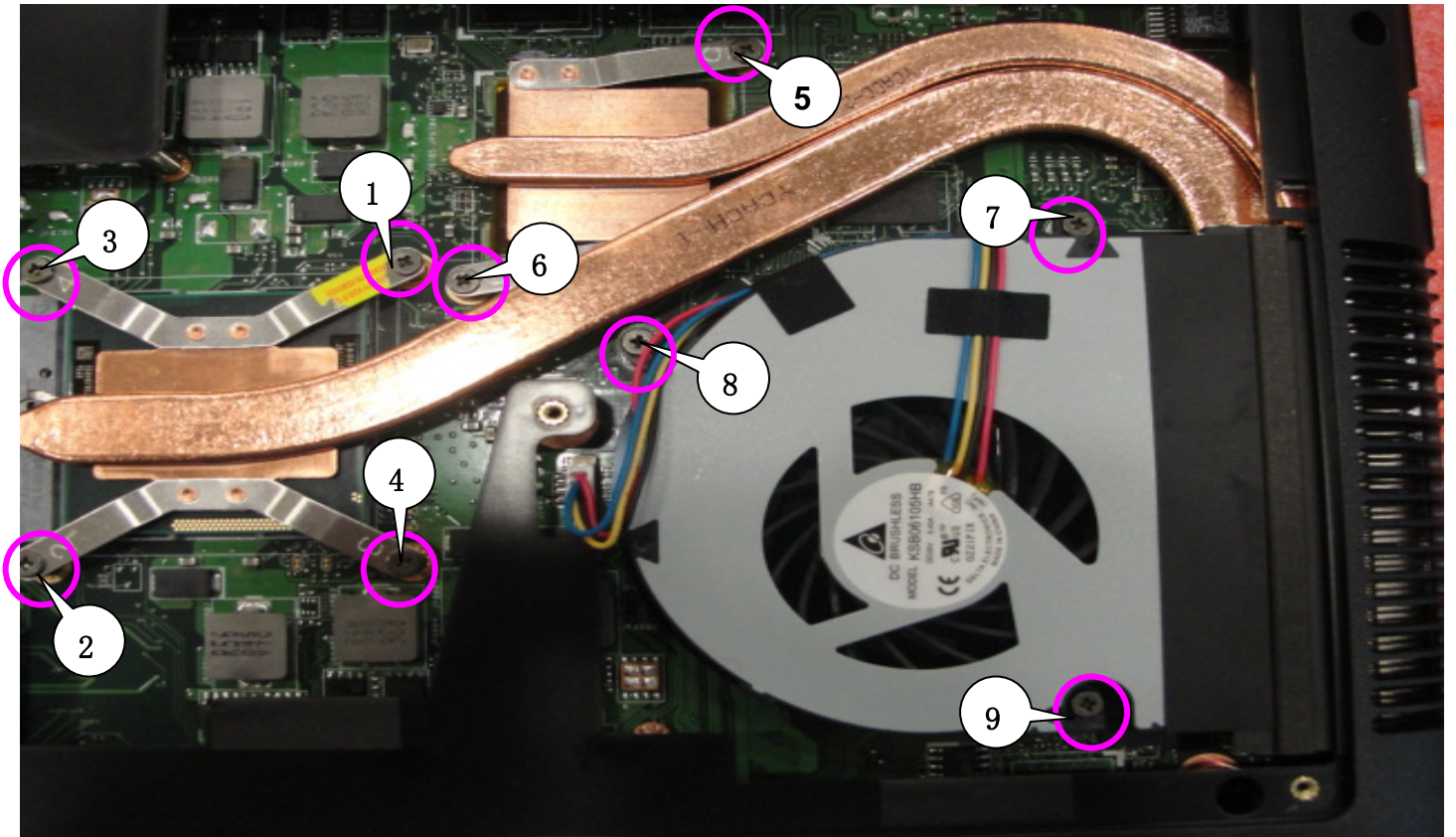

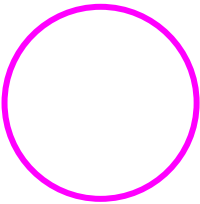


Photo	Screw specification	label
	(M2.5*L4MM) black	



# CR640&CX640 (MS-16Y1) screws specification

■ 3、WIRELESS CARD and HDD ASSY total 5pcs screws

■ specification :

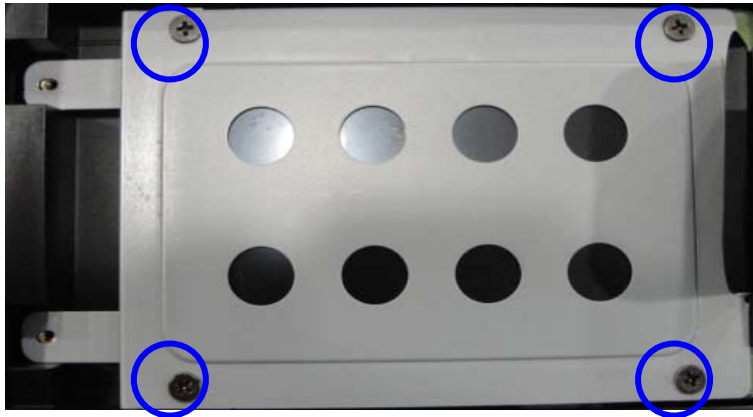

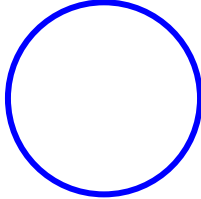

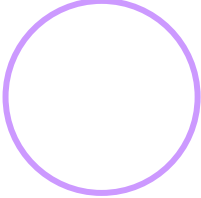



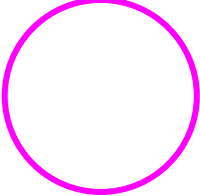
Photo	Screw specification	label
	(M3*L3MM) black	
	(M2*L3MM) black	

# CR640&CX640 (MS-16Y1) screws specification

■ 4 - NB total 3pcs screws

■ specification :



Photo	Screw specification	label
	(M2.5*L4MM) black	



## CR640&CX640 (MS-16Y1) screws specification

■ 5、UPCASE ASSY total 5pcs screws

■ specification :

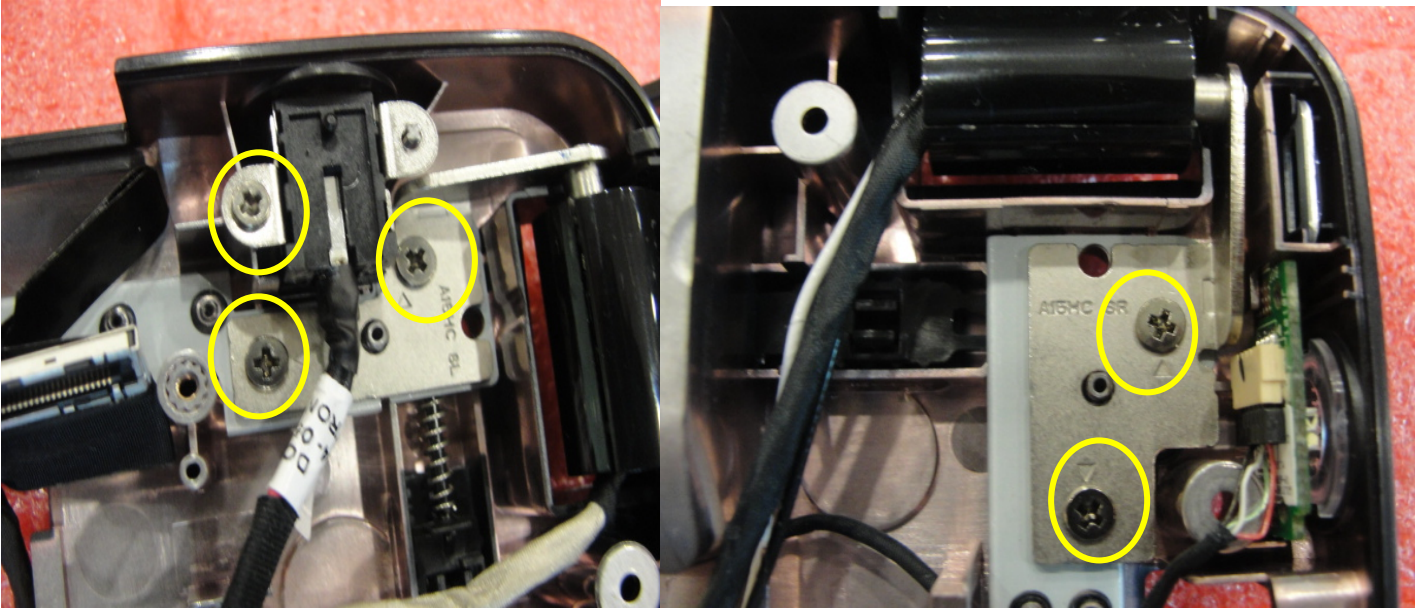

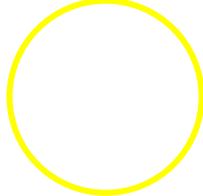


Photo	Screw specification	Label
	(M2.5*L5MM) black	



## CR640&CX640 (MS-16Y1) screws specification

■ 6、LCD MODULE ASSY total 12pcs screws

■ specification :

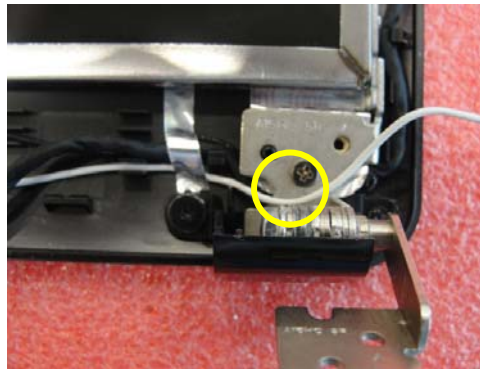

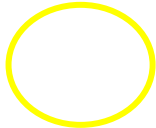





Photo	Screw specification	label
	(M2.5*L5MM) black	
	(M2*L3MM) black	

## CR640&CX640 (MS-16Y1) screws specification

■ 7、LCD MODULE ASSY total 6pcs screws

■ specification :



Photo	Screw specification	label
	(M2.5*L4MM) black	