

GE40/CR42 (MS-1492) Disassemble Guide

- 1、 BATTERY PACK
- 2、 HDD&ODD MODULE/BOTTOM DOOR
- 3、 THERMAL-KIT、 DRAM MODULE
- 4、 CPU&WLAN MODULE
- 5、 SEPARATE UPPER CASE AND LOWER CASE
- 6、 LOWER CASE ASSY
- 7、 LCD MODULE ASSY

GE40/CR42 (MS-1492) Disassemble Guide

1、 BATTERYPACK



1.1: Move the "Unlock" button base on left picture shows;

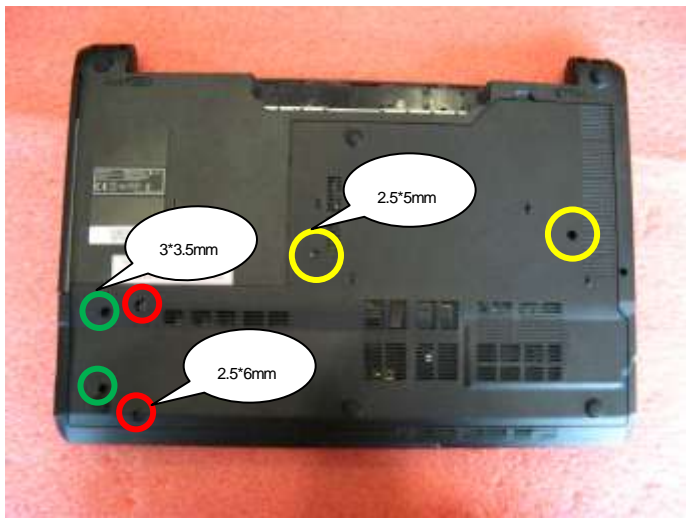


1.2: Push the "Release" button and move the battery pack base on left picture.

Component	P/N	Qty
Battery Pack	S9N-4362210-M47	1

GE40/CR42 (MS-1492) Disassemble Guide

2、HDD&ODD MODULE/BOTTOM DOOR



2.1: Remove the 2 screws (M2.5*5mm), then Remove the 2 screws (M2.5*6mm),last Remove the 2 screws (M3*3.5mm), remove the Bottom door.

Attention: the screw driver torque is: 1.7-2.0Kgf-cm

Component	P/N	Qty
Bottom door	307-491J213-Y31	1
Screw	E43-1303013-G68	2
Screw	E43-1256001-H29	2
Screw	E43-1255001-H29	2



2.2 : Remove the 1 screws (M2.5*5mm);then remove ODD Module.

Attention: the screw driver torque is: 1.7-2.0Kgf-cm

Component	P/N	Qty
ODD MODULE	S7D-2170016-T87	1
screw	E43-1255001-H29	1

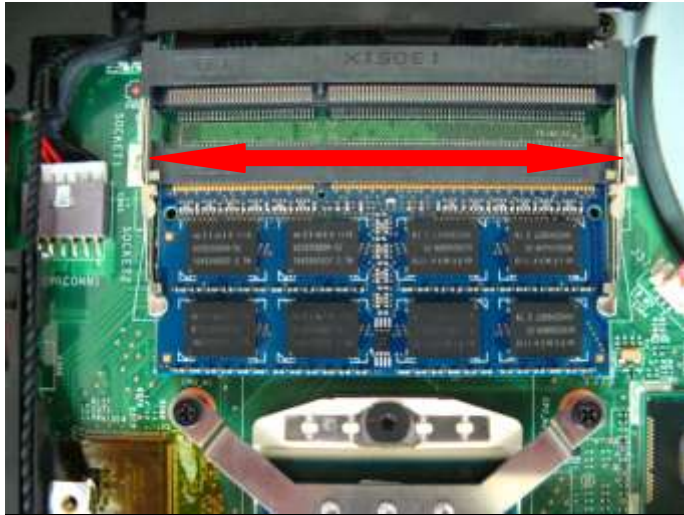


2.3 : Remove the HDD Module according to the direction as pic shows.

Component	P/N	Qt
HDD MODULE	S71-2475702-W36	1

GE40/CR42 (MS-1492) Disassemble Guide

3、 THERMAL-KIT、 DRAM MODULE



3.1: Push the two side shielding of DRAM as pic shows;.

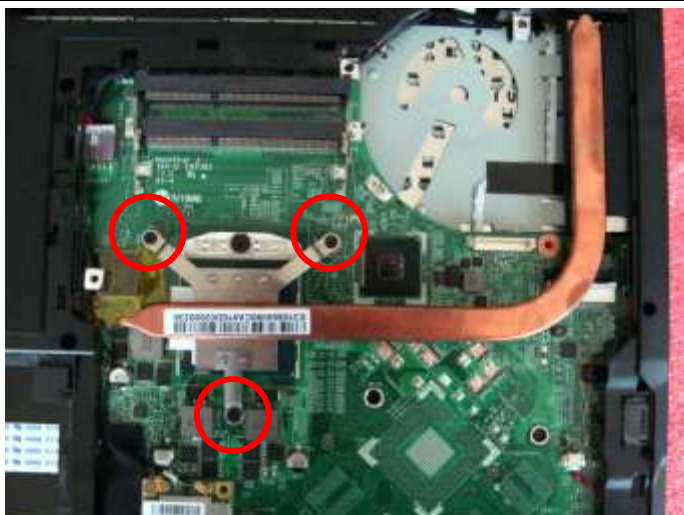
Component	P/N	Qty
DRAM Module	S7C-S56AD01-K37	2



3.2: Remove the 2 screws(M2.5*5mm) and FAN cable, after that remove the Fan.

Attention: the screw driver torque is 1.5-2.0Kgf-cm

Component	P/N	Qty
Fan	E33-0800261-MC2	1
Screw	E43-1255001-H29	2



3.3: Remove the 3 screws (M2.5*5mm) , after that remove the heatsink.

Attention: the screw driver torque is 1.2-2.0Kgf-cm

Component	P/	Qty
Screw	E43-1255001-H29	3
HEATSINK	E31-0804090-CA9	1

GE40/CR42 (MS-1492) Disassemble Guide

4、CPU&WLAN MODULE



4.1: Open the CPU Slot with hexagonal screwdriver , then remove CPU Module as below.

Component	P/N	Qty
CPU	A13-22201G6-I06	1



4.2: Remove 1 screw(M2*3mm); then remove the two sides wireless card antenna as pic shows:

Attention: the screw driver torque is: 1.8-2.0Kgf-cm

Component	P/N	Qty
W reless card	S57-08000J0-T46	1
Screw	E43-1203003-H29	1

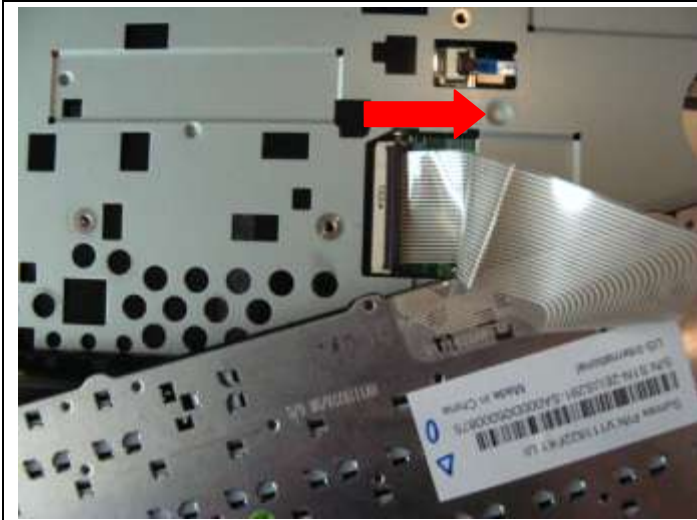
GE40/CR42 (MS-1492) Disassemble Guide

5、SEPARATE UPPER CASE AND LOWER CASE



5.1: Remove the Keyboard as pic shows.

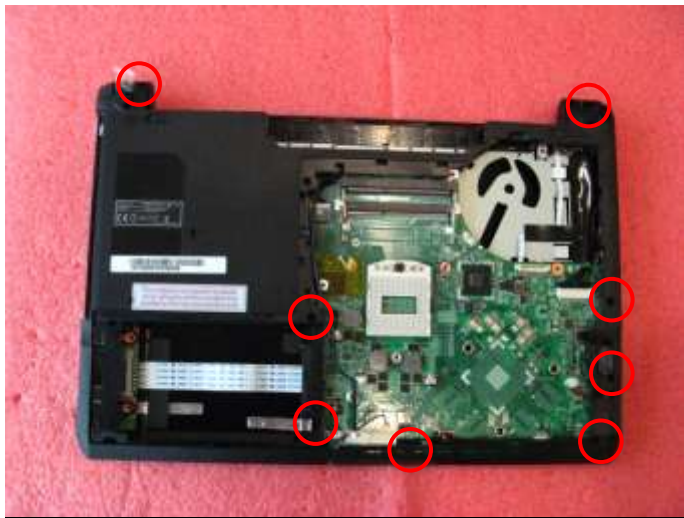
Componen	P/N	Qty
Keyboard	S1N-2EUS291-SA0	1



5.2: Disconnect Keyboard Cable as pic shows.

GE40/CR42 (MS-1492) Disassemble Guide

5. SEPARATE UPPER CASE AND LOWER CASE



5.3: Remove the 8 screws(M2.5*5mm);

Attention: the screw driver torque is: 2.0-2.5Kgf-cm

Component	P/N	Qty
Screw	E43-1255001-H29	8



5.4: Remove lower case, then remove DC IN Module;

Component	P/N	Qty
DC IN	K10-3006142-V03	1

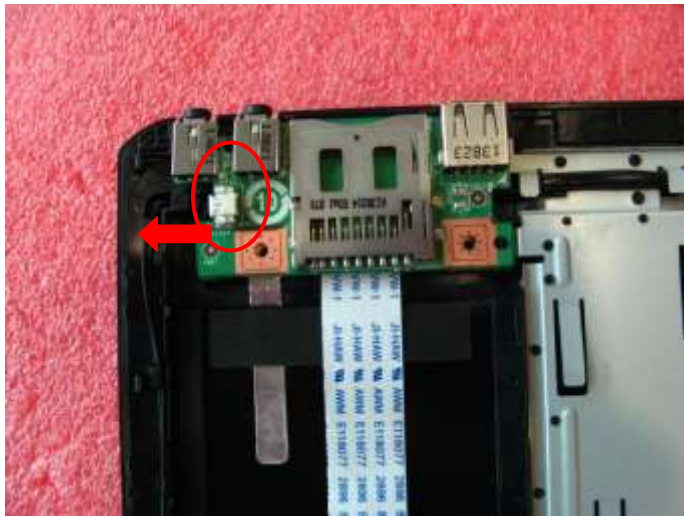


5.5: Remove the LVDS cable as pic shows:

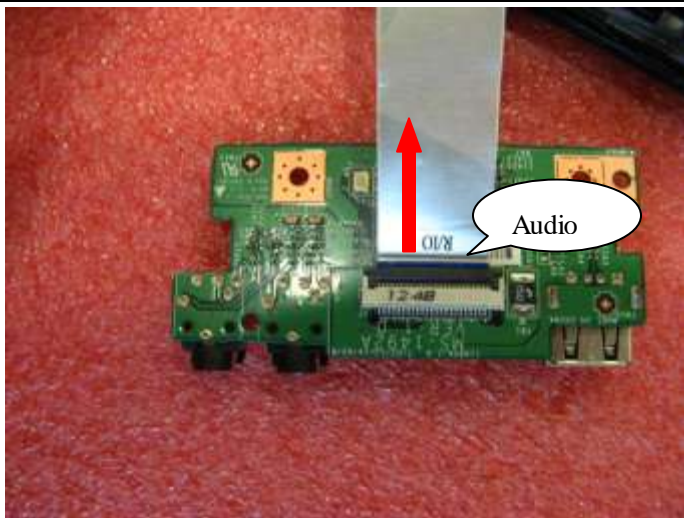
Component	P/N	Qty
LVDS Cable	K19-3040045-H39	1

GE40/CR42 (MS-1492) Disassemble Guide

6、 LOWER CASE ASSY



6.1: Remove the MIC cable as pic shows:



6.2: Remove the Audio Board, Then Remove the Audio cable as pic shows.

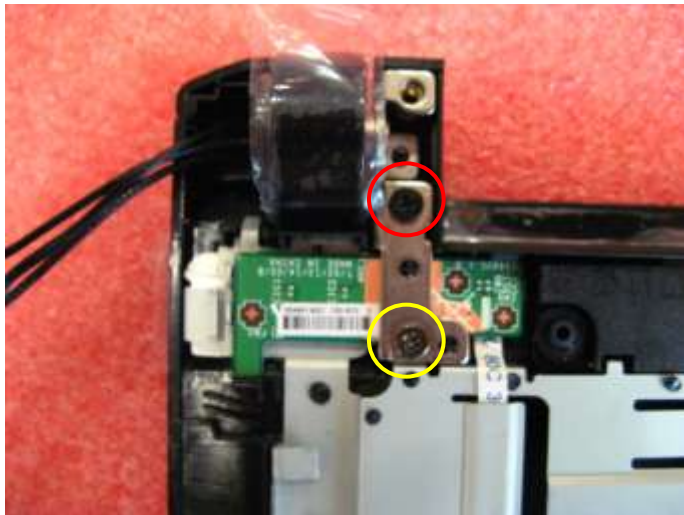
Component	P/N	Qty
Audio Board	607-1492A-02S	1



6.3: Draw Out Antenna and MIC Cable as pic shows.

GE40/CR42 (MS-1492) Disassemble Guide

6、 LOWER CASE ASSY



6.4: Remove the 1 screws (M2.5*5mm)and Remove the 1 screws (M2*3.5mm)that stabilize the left LCD hinge.

Attention: the screw driver torque is 3.0-3.5Kgf-cm

Component	P/N	Qty
Screw	E43-1255001-H29	1
Screw	E43-1203501-H29	1



6.5: Remove the 1 screws (M2.5*5mm)and Remove the 1 screws (M2*3.5mm)that stabilize the Right LCD hinge.

Attention: the screw driver torque is 3.0-3.5Kgf-cm

Component	P/N	Qty
screw	E43-1255001-H29	1
screw	E43-1203501-H29	1

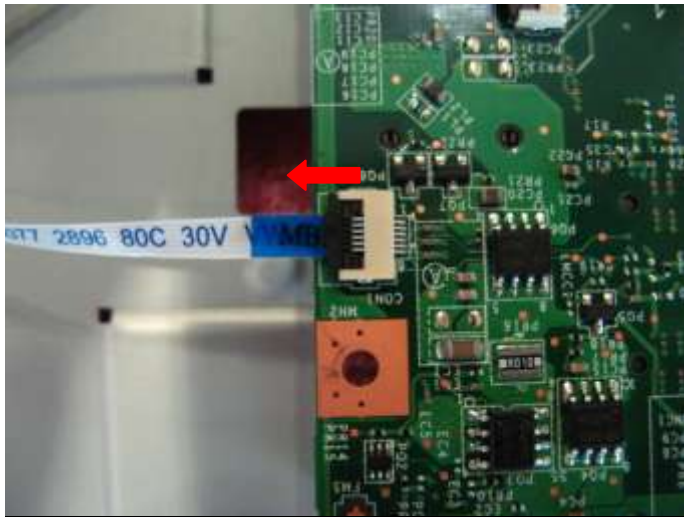


6.6:Disconnect Touchpad Cable as pic shows,then remove MB.

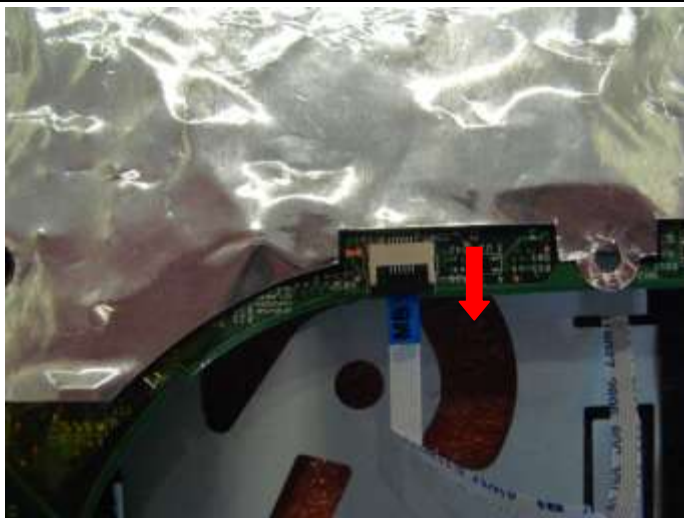
Component	P/N	Qty
MB	607-14921-02S	1

GE40/CR42 (MS-1492) Disassemble Guide

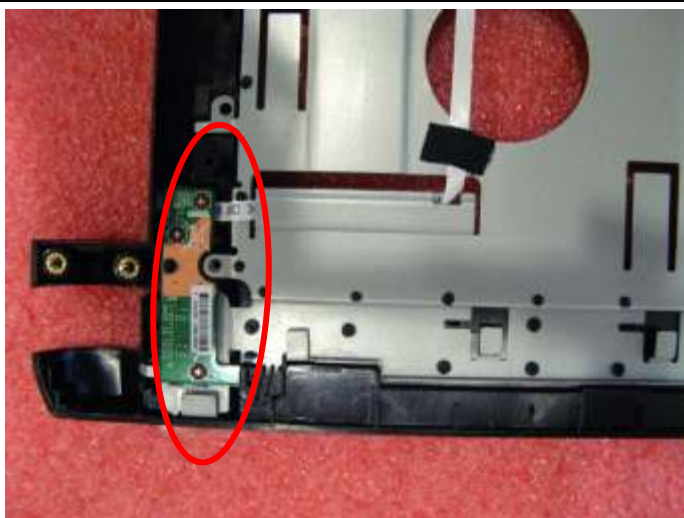
6、 LOWER CASE ASSY



6.7: Remove the left Power cable.



6.8: Remove the Hall Switch cable.

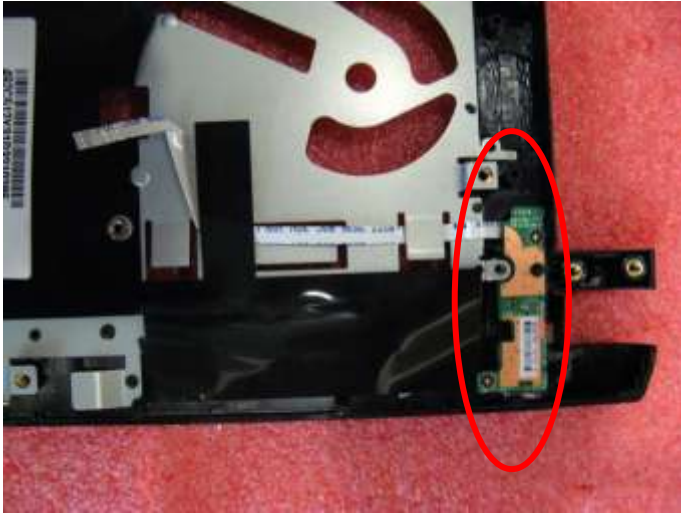


6.9: Remove the Power board.

Component	P/N	Qty
Power board	607-1492B-01S	1

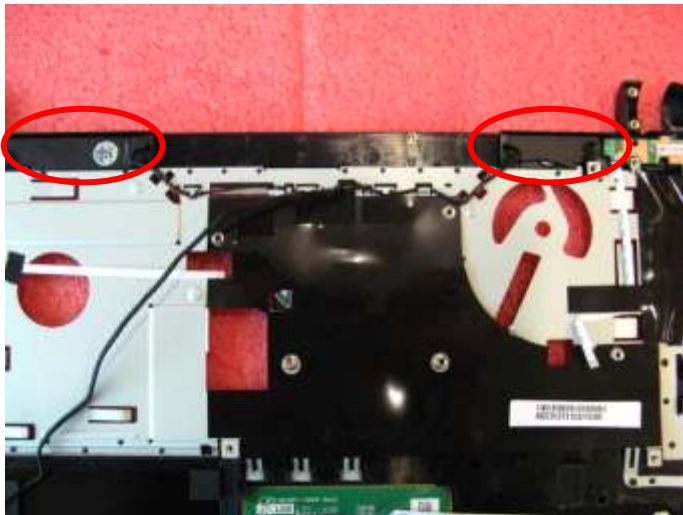
GE40/CR42 (MS-1492) Disassemble Guide

6、 LOWER CASE ASSY



6.10: Remove the Hall Switch Board.

Component	P/N	Qty
Hall Switch Board	607-1492C-01S	1



6.11 : Disassemble the Speaker module, then Disassemble the speaker Cable.

Component	P/N	Qty
Speaker Module	S33-A010142-F33	1



6.12: Remove Touchpad Module.

Component	P/N	Qty
Touchpad Module	S78-3700630-E47	1
Upper case	307-492C513-Y31	1

GE40/CR42 (MS-1492) Disassemble Guide

7、LCD MODULE



7.1 : Remove the LCD bezel, should begin from downside to left side, then the upside to right side;

Component	P/N	Qty
LCD Bezel	307-491B214-U22	1



7.2: Remove the 2 screws (M2*3mm),Remove LCD Panel.

Attention: the screw driver torque is 3.0-3.5Kgf-cm

Component	P/N	Qty
LCD Panel	OS1-1491002	1
Screw	E43-1203003-H29	2

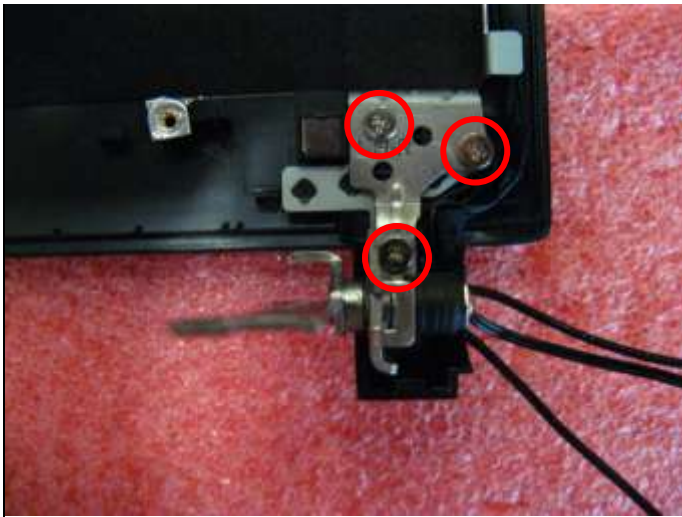


7.3: Remove LVDS Cable.

Component	P/N	Qty
LVDS Cable	K19-3040045-H39	1

GE40/CR42 (MS-1492) Disassemble Guide

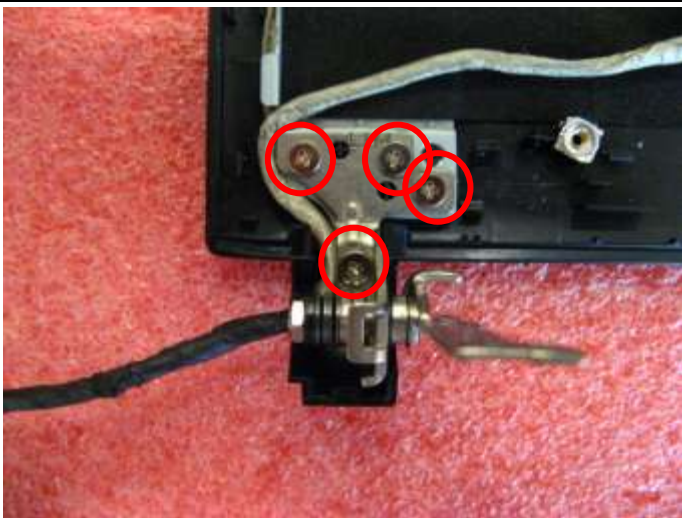
7、 LCD MODULE ASSY



7.4: Remove the 3 screws (M2*3mm); Remove the Right LCD hinge.

Attention: the screw driver torque is 3.0-3.5Kgf-cm

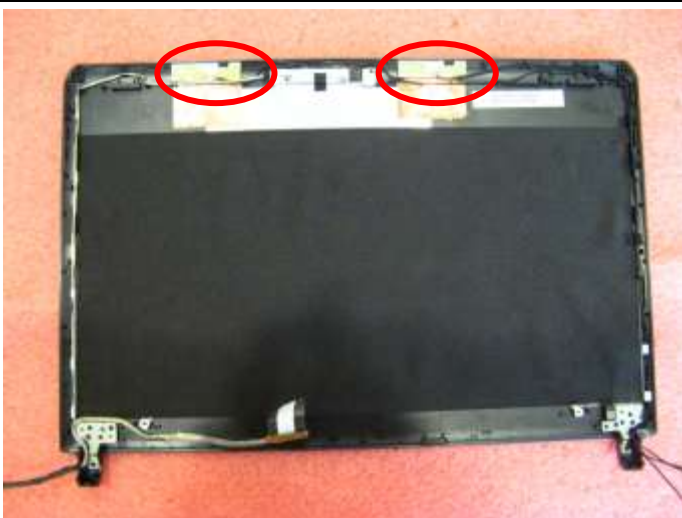
Component	P/N	Qty
Screw	E43-1203003-H29	3
Hinge R	E2M-4920411-G60	1



7.5: Remove the 4 screws (M2*3mm); Remove the Left LCD hinge.

Attention: the screw driver torque is 3.0-3.5Kgf-cm

Component	P/N	Qty
Screw	E43-1203003-H29	4
Hinge L	E2M-4920311-G60	1

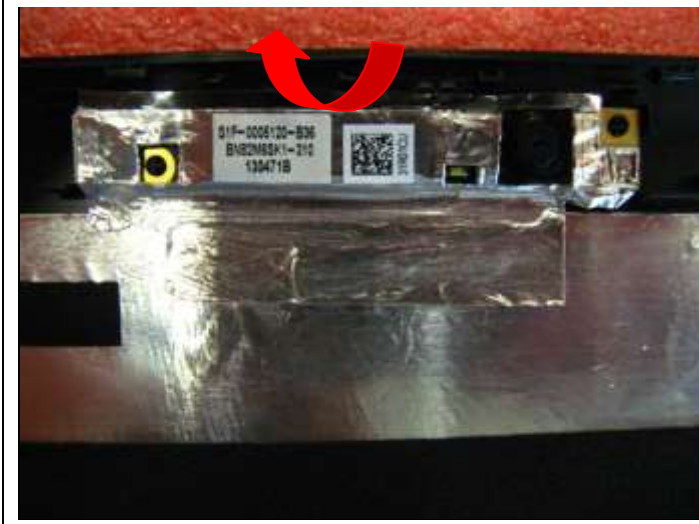


7.6: Remove the WIRELESS Antenna board from LCD Cover.

Component	P/N	Qty
Antenna	S79-1801700-J51	2
LCD Cover	307-492A231-Y31	1

GE40/CR42 (MS-1492) Disassemble Guide

7、 LCD MODULE ASSY



7.7: Remove the CMOS camera module according to the sequence as pic shows;

Component	P/N	Qty
Camera Module	S1F-0005120-B36	1