

S30 (MS-1358) Disassemble Guide

- 1、 BATTERY
- 2、 KEYBOARD
- 3、 UPPER CASE
- 4、 HDD MODULE
- 5、 LOWER CASE
- 6、 WLAN MODULE
- 7、 MOTHER BOARD AND TOUCHPAD MODULE
- 8、 LCD MODULE

S30 (MS-1358) Disassemble Guide

1、 BATTERY

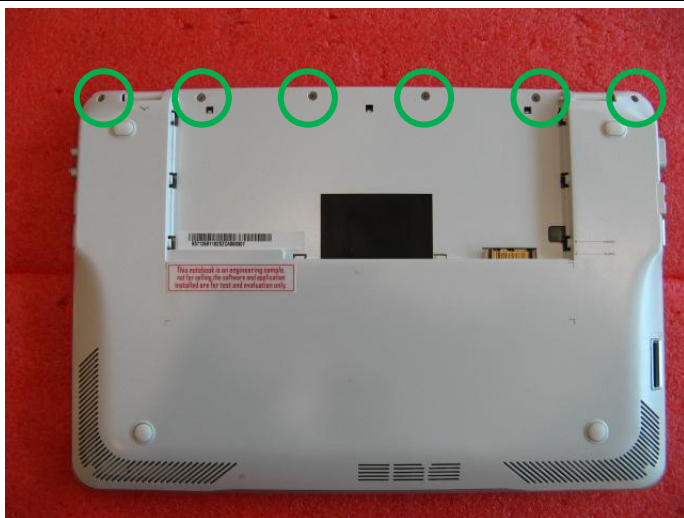


1.1: Move the "Unlock" button base on left picture shows.



1.2: Release the "Release" button and move the battery pack base on left picture.

Component	P/N	Qty
Battery Pack	S9N-2141400-SB3	1



1.3: Remove the 6 screws (M2*3mm).

Attention: the screw driver torque is: 1.5-2.0Kgf-cm

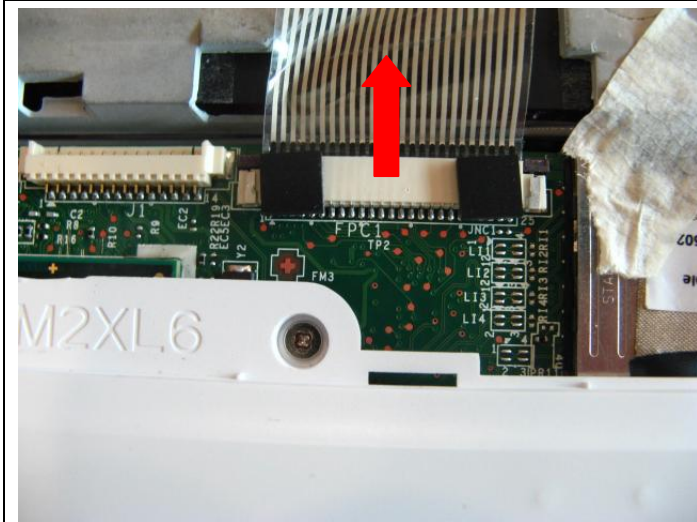
Component	P/N	Qty
Screw	E43-1203003-H29	6

S30 (MS-1358) Disassemble Guide

2、KEYBOARD



2.1: Remove the Keyboard.

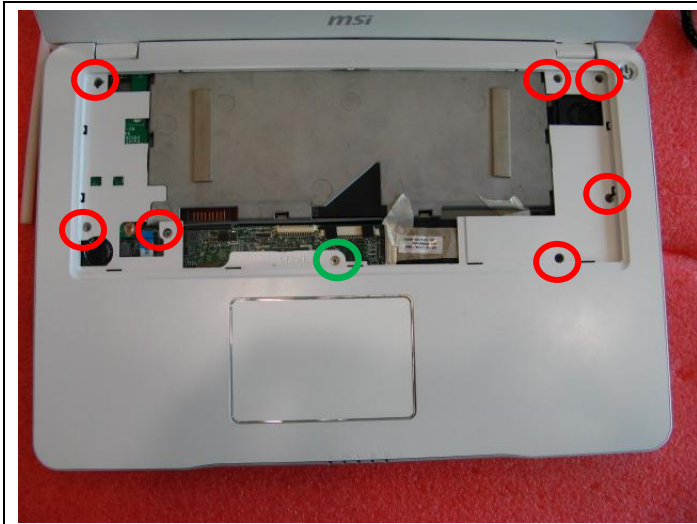


2.2: Firstly push the handspike on two sides of the K/B cable connector according to the direction as pic shows; then remove the cable.

Component	P/N	Qty
Keyboard	S1N-2EUS341-SA0	1

S30 (MS-1358) Disassemble Guide

3、UPPER CASE

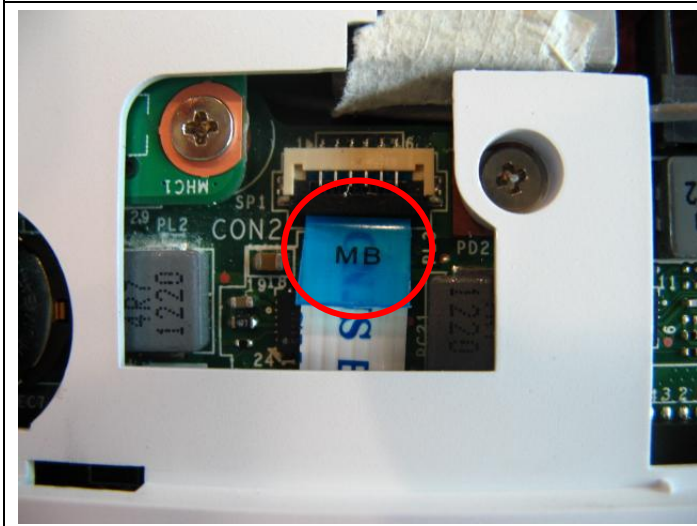


3.1 : Remove the 7 screws (M2*3mm) and 1 screw (M2*6mm)..

Attention: the screw driver torque is: 1.0-1.5Kgf-cm

Attention: the screw driver torque is: 1.5-1.8Kgf-cm

Component	P/N	Qty
Screw	E43-1206001-H29	1
Screw	E43-1203003-H29	7



3.2: Disconnect Touchpad Cable.

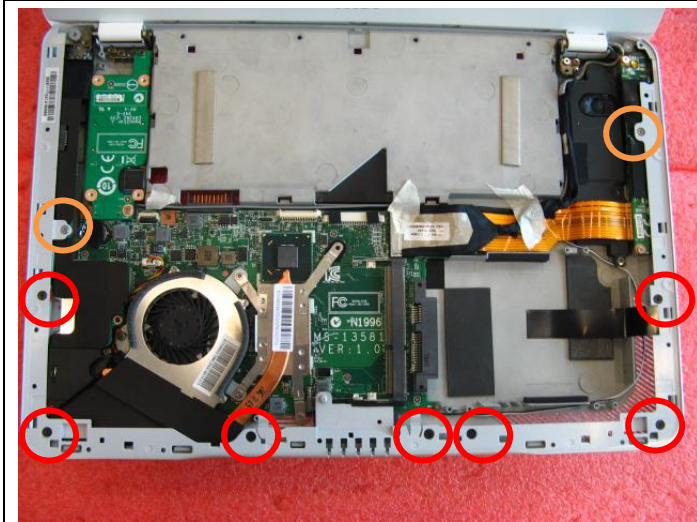
S30 (MS-1358) Disassemble Guide



3.3: When remove the Upper case, first remove the two sides, then remove the down side, last detach the Upper case down side from Lower case.

Attention: Don't use the heavy strength to pull the Upper case; and the Touchpad cable is connected with the main board.

Component	P/N	Qty
Upper Case	307-358C111-TA2	1



3.4: Remove the 7 screws (M2*3mm) and 2 screws (M2*5mm).then remove the Upper Case Frame.

Attention: the screw driver torque is: 1.0-1.5Kgf-cm

Attention: the screw driver torque is: 1.5-1.8Kgf-cm

Component	P/N	Qty
Upper Case Frame	307-358E111-TA2	1
Screw	E43-1203009-H29	7
Screw	E43-1206701-H29	2

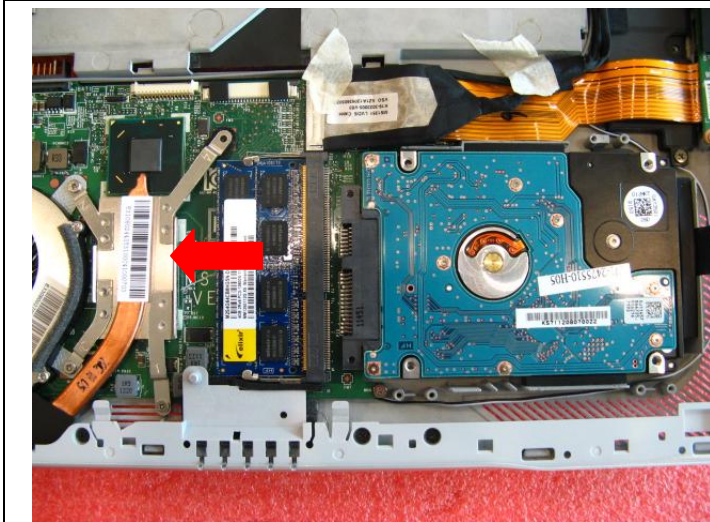
S30 (MS-1358) Disassemble Guide

4、HDD MODULE



4.1: Remove the HDD Module according to the direction as pic shows;

Component	P/N	Qty
HDD Module	S71-2450547-W36	1

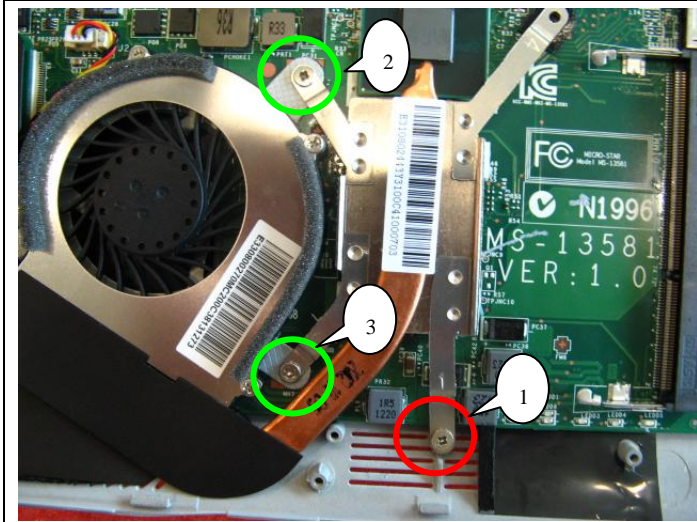


4.2 : Remove the DRAM Module according to the direction as pic shows;

Component	/N	Qty
DRAM Module	S7C-S45AH02-E54	1

S30 (MS-1358) Disassemble Guide

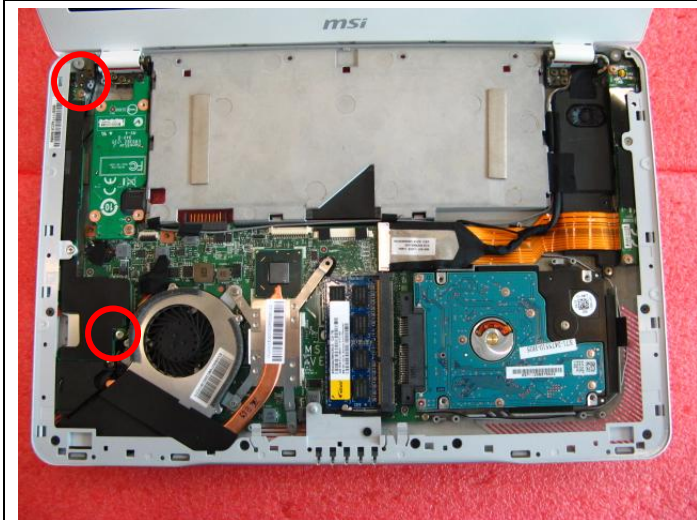
5. LOWER CASE



5.1: Remove the 3 screw(M2*3mm)

Attention: the screw driver torque: 1.0-1.5Kgf-cm

Component	P/N	Qty
Heatsink	E31-0802443-Y31	1
Screw	E43-1203003-H29	3



5.2: Remove the 2 screw(M2*3.5mm)

Attention: the screw driver torque: 1.0-1.5Kgf-cm

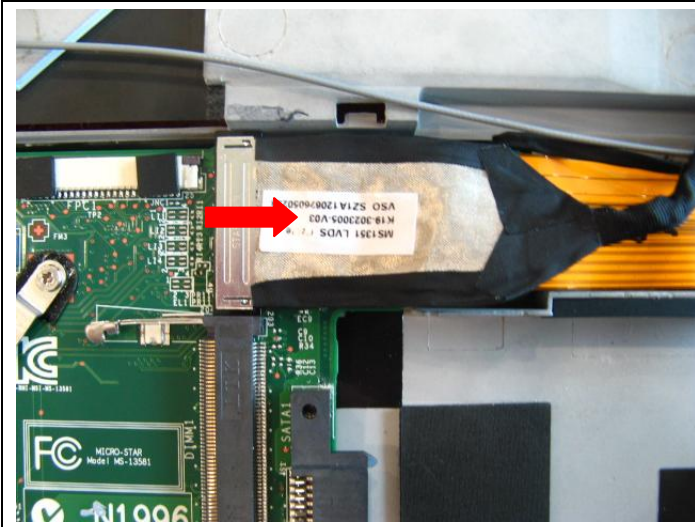
Component	P/N	Qty
Screw	E43-1203501-H29	2



5.3 : Remove the I/O Board

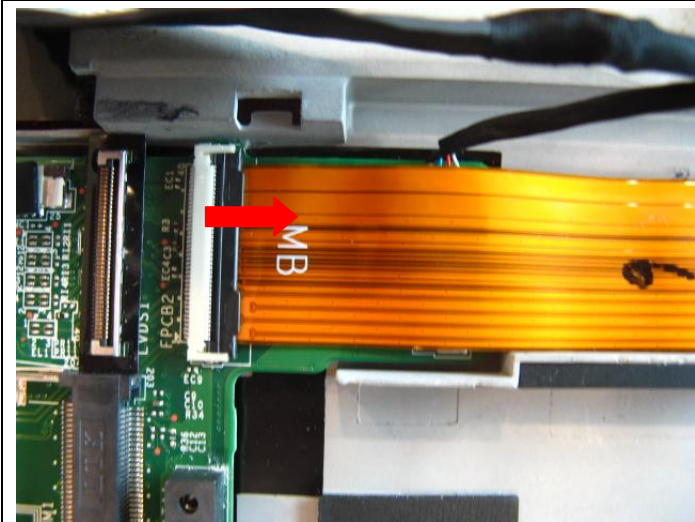
Component	P/N	Qty
I/O Board	607-1358B-01S	1

S30 (MS-1358) Disassemble Guide

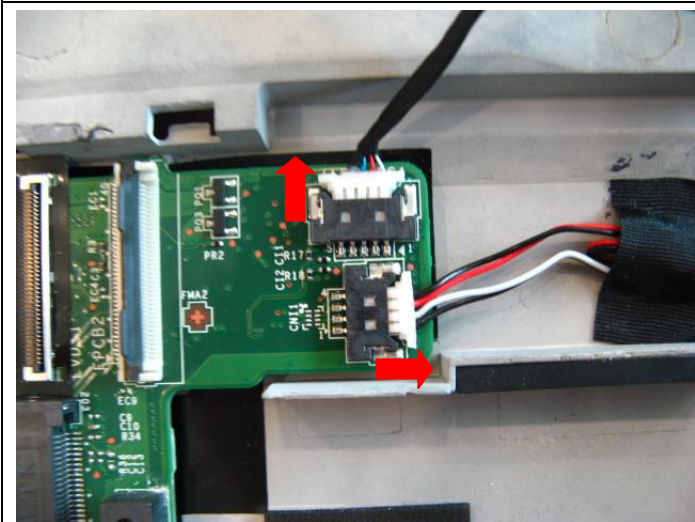


5.4 : Remove LVDS Cable.

Component	P/N	Qty
LVDS Cable	K19-3023005-V03	1



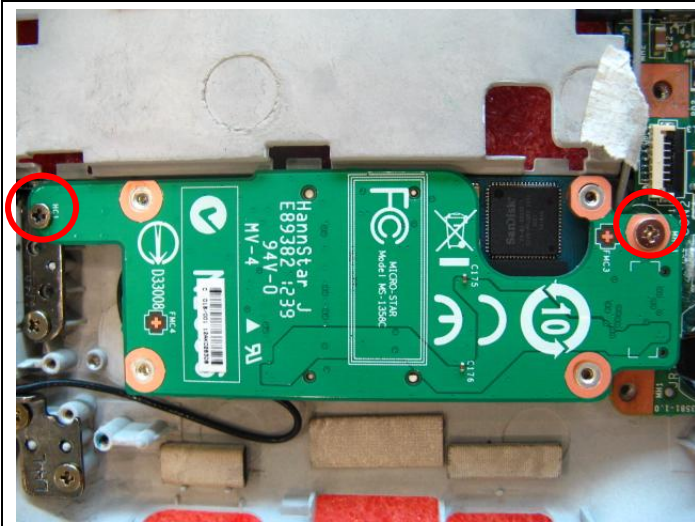
5.5 : Remove Power Cable.



5.6 : Remove Camera Cable and Speaker Cable.

S30 (MS-1358) Disassemble Guide

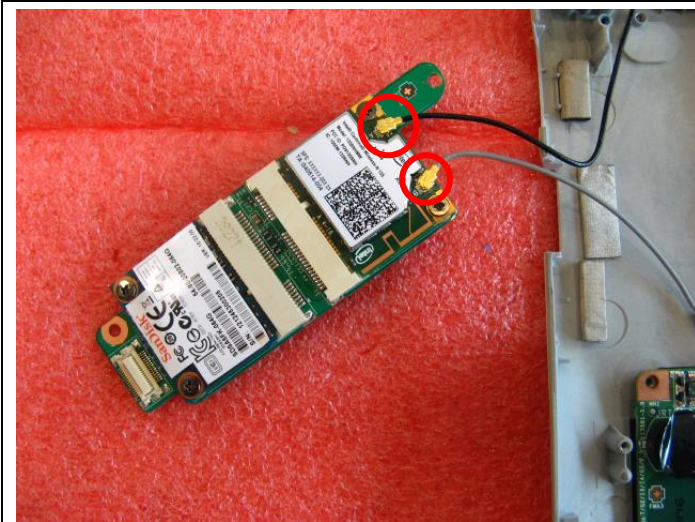
6、WLAN MODULE



6.1: Remove the 2 screw(M2*3.5mm)

Attention: the screw driver torque: 1.0-1.5Kgf-cm

Component	P/N	Qty
Screw	E43-1203501-H29	2



6.2: Remove the Wlan board as left pic shows, then remove the two side wireless card antenna as pic shows.

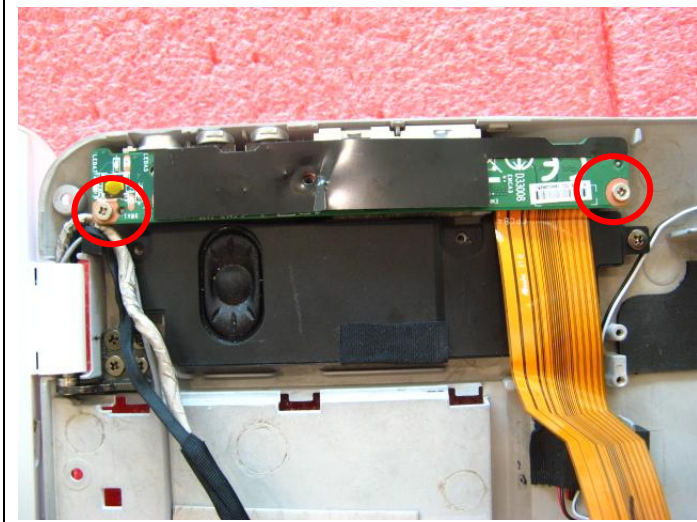


6.3: Remove 2 screw (M2*3.5mm), then remove the WLAN module according to the direction of pic shows.

Attention: the screw driver torque is: 1.5-1.8Kgf-cm

Component	P/N	Qty
WLAN Card	S78-4404300-S77	1
Screw	E43-1203501-H29	2

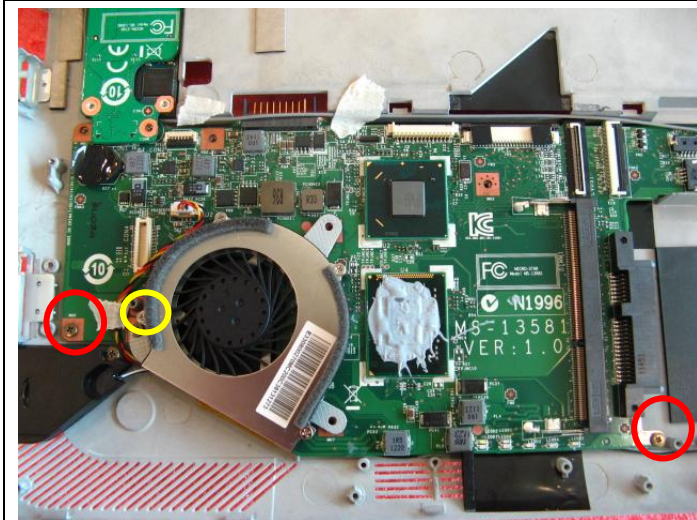
S30 (MS-1358) Disassemble Guide



6.4 : Remove the 2 screw(M2*3.5mm), then remove the Power Board

Attention: the screw driver torque is 1.0-1.5Kgf-cm

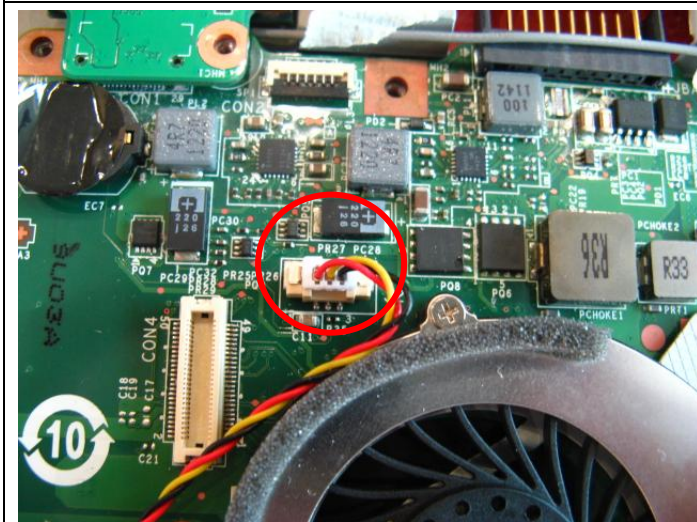
Component	P/N	Qty
Power Board	607-1358A-01S	1
Screw	E43-1203501-H29	2



6.5: Remove the 3 screw (M2*3.5mm),

Attention: the screw driver torque is 1.0-1.5Kgf-cm

Component	P/N	Qty
Screw	E43-1203501-H29	3



6.6: Disconnect Fan Cable,then remove the FAN..

Component	P/N	Qty
FAN	E33-0800270-MC2	1

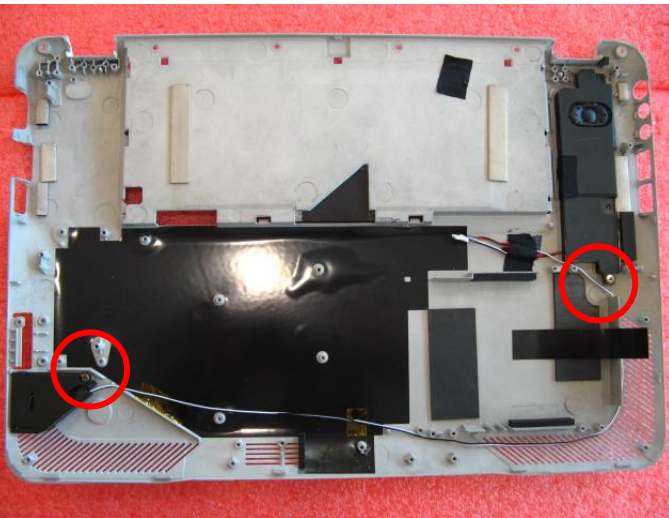
S30 (MS-1358) Disassemble Guide

7、MOTHER BOARD AND TOUCHPAD MODULE



7.1: Disassemble the main board to Lower case

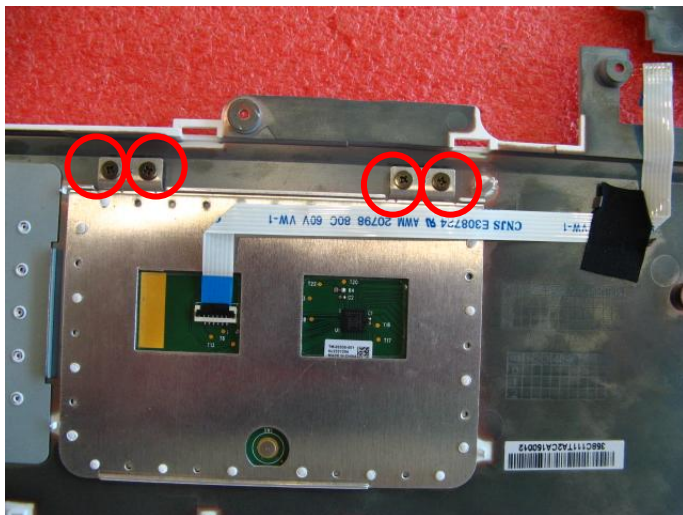
Component	P/N	Qty
Main Board	607-13581-01S	1



7.2 : Remove the 2 screw(M2*3.5mm), then remove the Speaker Module.

Attention: the screw driver torque is 1.0-1.5Kgf-cm

Component	P/N	Qty
Screw	E43-1203501-H29	2
Speaker	S33-A020213-F33	2



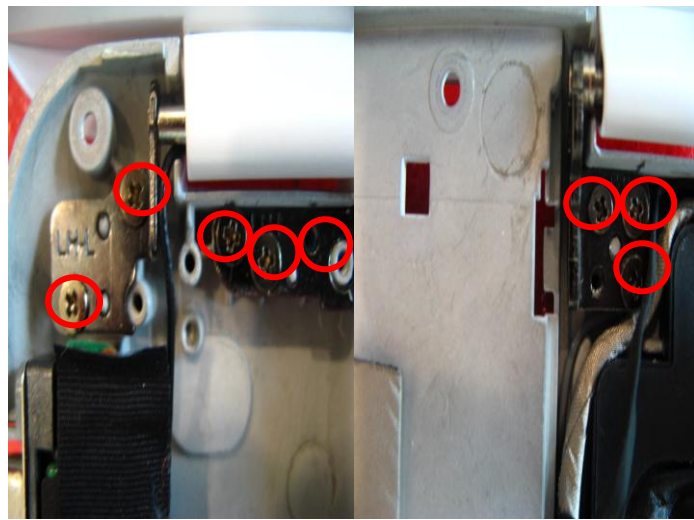
7.3: Remove the 4 screw(M2*3mm), then remove the Touchpad Module.

Attention: the screw driver torque is 1.0-1.5Kgf-cm

Component	P/N	Qty
Screw	E43-1203003-H29	4
Touchpad Module	S78-3700740-SD2	1

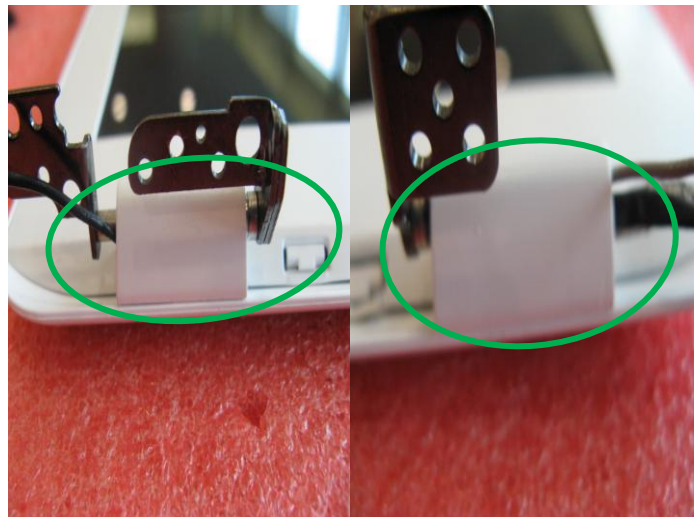
S30 (MS-1358) Disassemble Guide

8、LCD MODULE



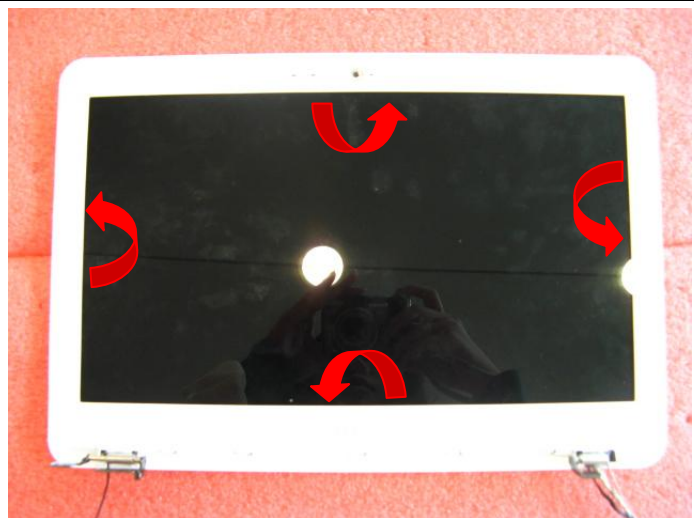
8.1: Remove 8 screw (M2*3.5mm), then remove the LCD module according to the direction of pic shows.

Component	P/N	Qty
LCD Moduel	S1J-342G003-A90	1
Screw	E43-1203501-H29	8



8.2: Remove the 2 LCD Hinge cap.

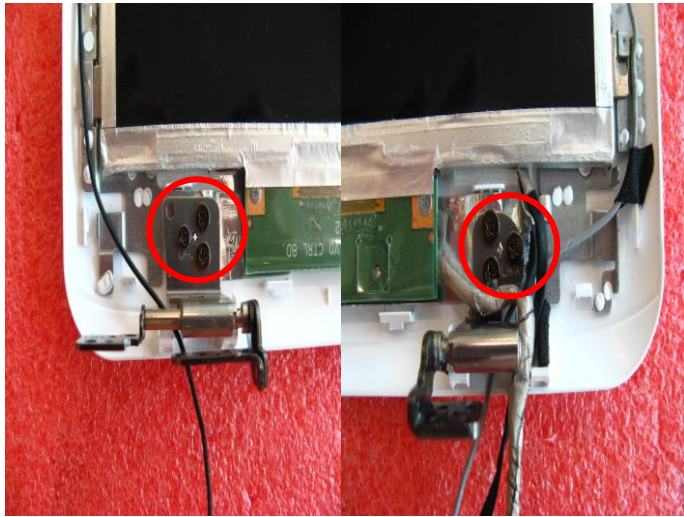
Component	P/N	Qty
Hinge cap	E2P-3580311-TA2	2



8.3: Remove the LCD bezel.

Component	P/N	Qty
LCD Bezel	307-351B121-TC7	1

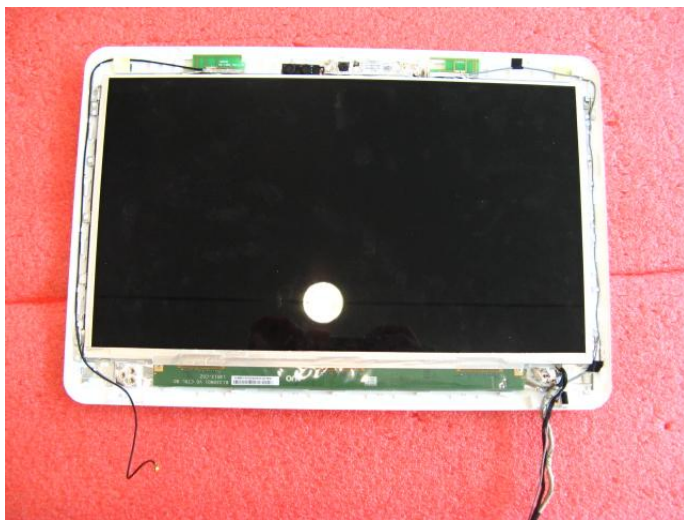
S30 (MS-1358) Disassemble Guide



8.4: Remove the 6 screws (M2*3.5mm)

Attention: the screw driver torque is 3.0-3.5Kgf-cm

Component	P/N	Qty
Screw	E43-1203501-H29	6
Hinge R	E2M-3580311-G60	1
Hinge L	E2M-3580211-G60	1



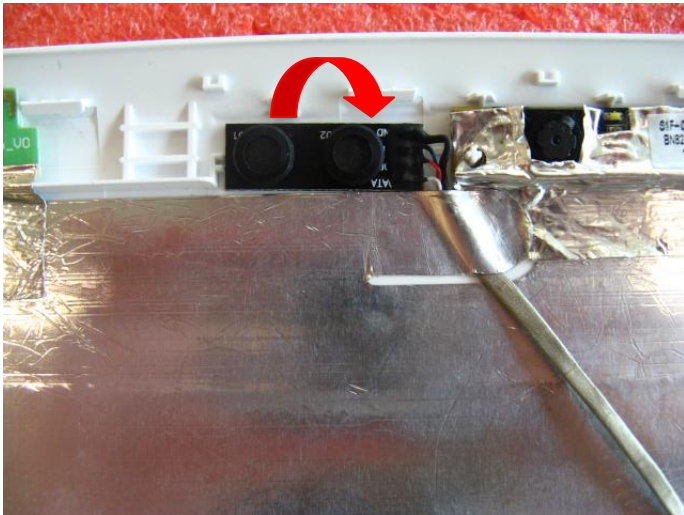
8.5 : Remove the display module from LCD cover;



8.6 : Remove the LVDS cable from display module;

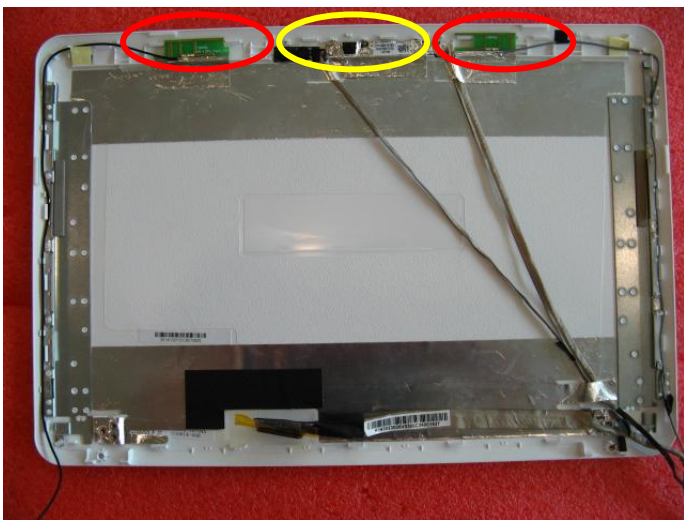
Component	P/N	Qty
LVDS Cable	K19-3023005-V03	1

S30 (MS-1358) Disassemble Guide



8.7: Remove the MIC Module as left picture show

Component	P/N	Qty
MIC Module	S34-2100901-N44	1



8.8: Remove Antenna, then Remove Camera Module;

Component	P/N	Qty
Antenna	S34-2100901-N44	1
LCD Cover	307-358A111-Y31	1
Camera Module	S1F-0005110-B36	1