

GT60 (MS-16F4) Disassembly Guide

- 1、 BATTERY PACK
- 2、 D CASE
- 3、 KEYBOARD/MIDDLE COVER/WLAN MODULE
- 4、 SEPARATE UPPER CASE AND LOWER CASE&ODD MODULE
- 5、 LOWER CASE ASSY
- 6、 UPPER CASE ASSY
- 7、 LCD MODULE ASSY

GT60 (MS-16F4) Disassembly Guide

1、 BATTERYPACK



1.1: Move the "Unlock" button base on left picture shows.

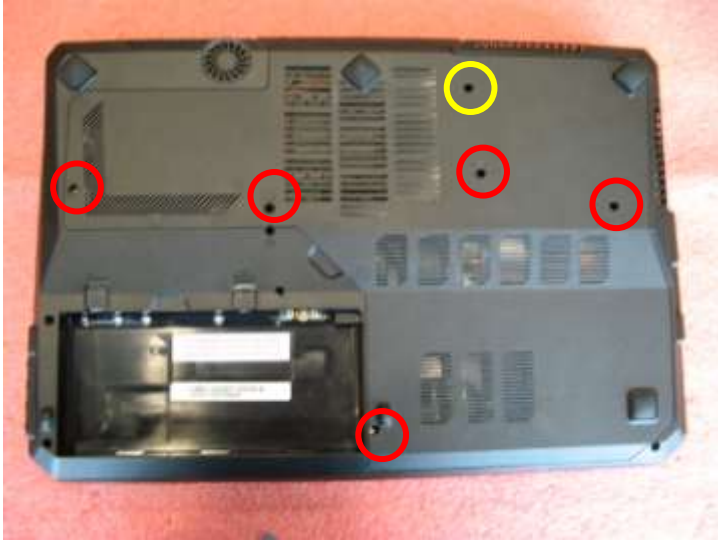


1.2: Release the "Release" button and move the battery pack base on left picture.

Component	P/N	Qty
Battery Pack	S9N-3496200-M47	1

GT60 (MS-16F4) Disassembly Guide

2、DCASE



2.1: Remove the 5 pcs screws (M2.5*5mm).then remove the 1 pcs screws (M2.5*7mm). Finally remove the bottom door

Attention: the screw driver touque is: 2.5-3.0 Kgf-cm

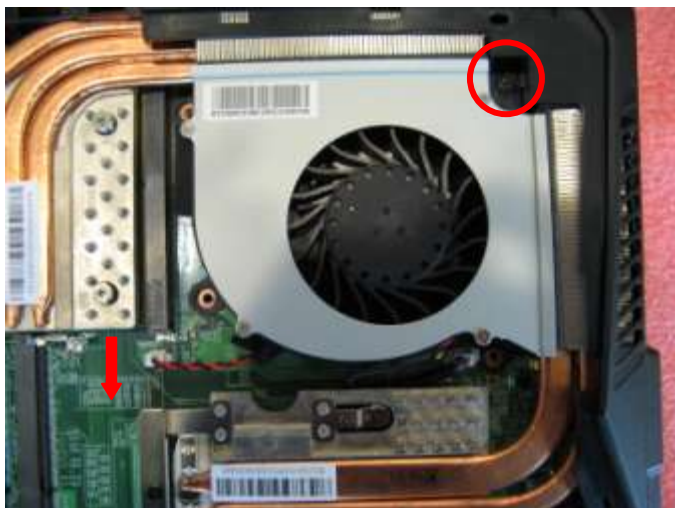
Comp nent	P/N	Q y
Screw	E43-1255001-H29	5
Screw	E43-1257002-G68	1
Bottom door	307-6F1J215-P89	1



2.2: Remove the 2 pcs screws (M2.5*5mm). Then remove the 2 pcs HDD Module.

Attention: the screw driver touque is: 2.5-3.0 Kgf-cm

omponen	P/N	Qty
Screw	E43-1255001-H29	2
HDD	S71-2475704-H05	2



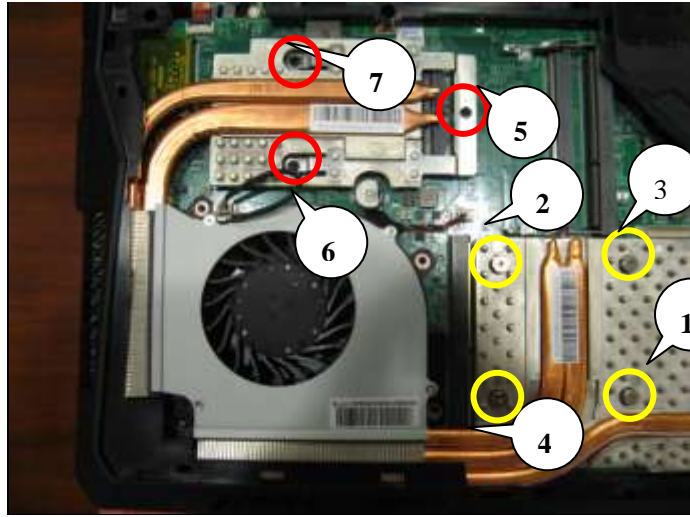
2.3 : Remove the 1 pcs screw(M2.5*5mm) and FAN cable, after that remove the Fan.

Attention: the screw driver torque is 2.5-3.0Kgf-cm

Component	P/N	Qty
Screw	E43-1255001-H29	1
FAN	E33-0800183-MC2	1

GT60 (MS-16F4) Disassembly Guide

2、DCASE



2.4: Remove the 3 pcs screws (M2.5*5mm) and 4 spring screws, after that remove the Heatsink › Finally remove the thermal module.

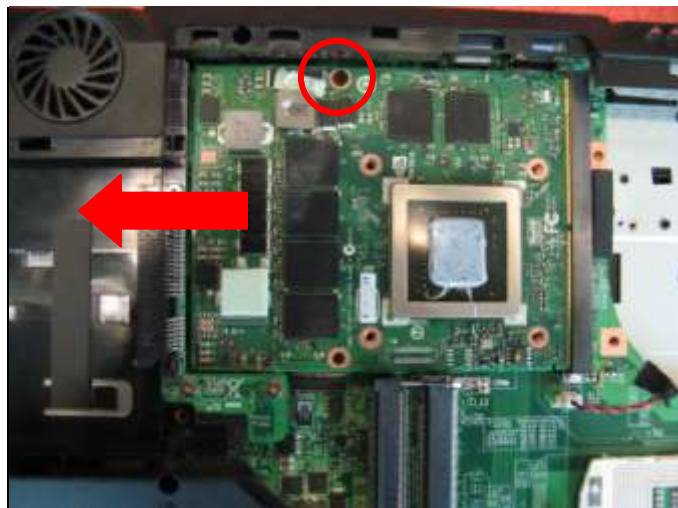
Attention: the screw driver torque is 2.5-3.0Kgf-cm

Component	P/N	Qt
Screw	E43-1255001-H29	3
Heatsink	E31-0900336-Y31	1
Heatsink	E31-0406163-Y31	1



2.5: Open the CPU Slot with Screw Driver, then remove CPU Module as below.

Component	P/N	Qty
CPU	A13-24201G6-I06	1



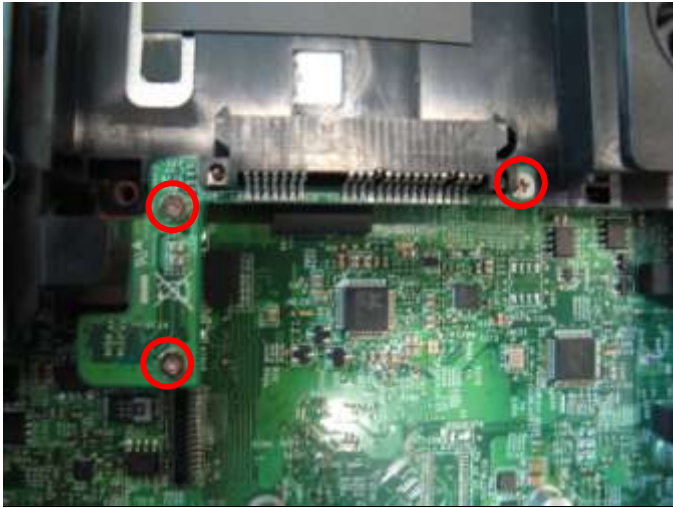
2.6: Remove 1 pcs screw (M2.5*5.5mm); then remove the VGA card as pic shows.

Attention: the screw driver torque is: 2.5-3.0Kgf-cm

Component	P/N	Qty
VGA Card	607-1W0B1-01S	1
Screw	E43-1255001-H29	1

GT60 (MS-16F4) Disassembly Guide

2、DCASE



2.7: Remove 3 pcs screws (M2*3mm); then remove the HDD Board.

Attention: the screw driver torque is: 1.5-2.0Kgf-cm

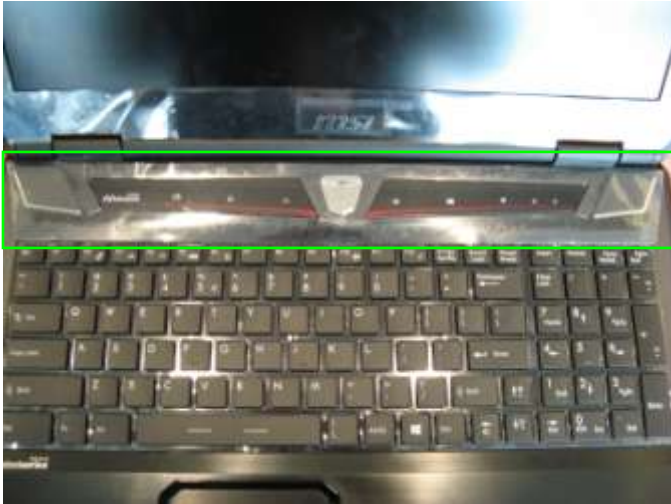
Component	P/N	Qty
HDD Board	607-16F4C-C10	1
Screw	E43-1203003-H29	3



2.8: Before remove Keyboard, firstly remove the LED Cable.

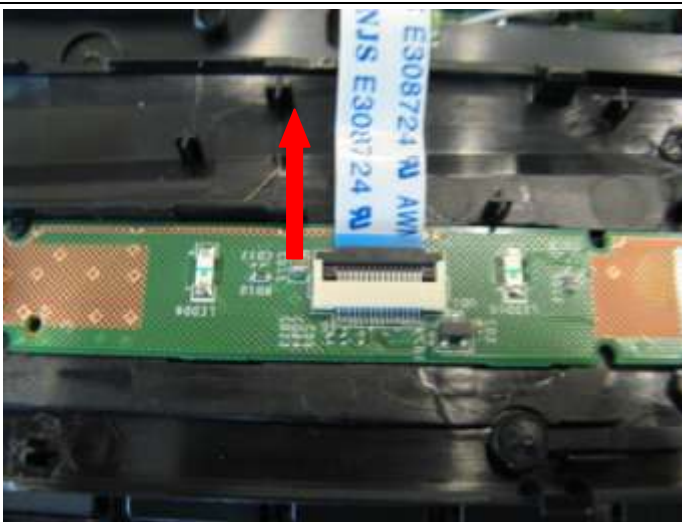
GT60 (MS-16F4) Disassembly Guide

3、KEYBOARD/MIDDLE COVER/WLAN MODULE



3.1: Before remove K/B, firstly remove the Middle Cover. Care the Sensor board FPC below the cover.

Component	P/N	y
Middle Cover	307-6F3E214-Y31	1



3.2: Disconnect the Sensor Cable.



3.3: Finally Remove the Sensor Board.

Component	P/N	Qty
Sensle board	607-16F32-01S	1

GT60 (MS-16F4) Disassembly Guide

3、KEYBOARD/MIDDLE COVER/WLAN/ODD MODULE.



3.4: Remove 1 pcs screw (M2*3mm); then remove the two side wireless card antenna ,last Remove the WLAN Module.

Attention: the screw driver torque is: 1.5-2.0Kgf-cm

Component	P/N	Qty
WLAN Module	S57-08000L0-Q24	1
Screw	E43-1203003-H29	1



3.5: Remove the LVDS cable as pic shows.

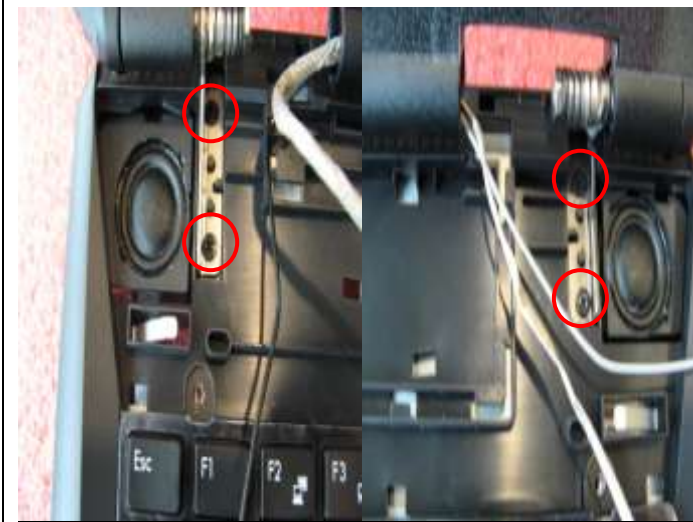
Component	P/N	Qty
LVDS Cable	K19-3031004-V03	1



3.6: Disconnect MIC Cable.

GT60 (MS-16F4) Disassembly Guide

3、KEYBOARD/MIDDLE COVER/WLAN MODULE.



3.7: Remove the 4 pcs screws (M2.5*7mm)

Attention: the screw driver torque is 3.0-3.5Kgf-cm

Component	P/N	Qty
Screw	E43-1257002-G68	4



3.8: Remove the LCD Module.



3.9: Remove the 5 pcs screws (M2*3mm) then remove Keyboard.

Attention: the screw driver torque is 3.0-3.5Kgf-cm

Component	P/N	Qty
Screw	E43-1203003-H29	5
Keyboard	S1N-3EUS204-SA0	1

GT60 (MS-16F4) Disassembly Guide

3、KEYBOARD/MIDDLE COVER/WLAN MODULE.



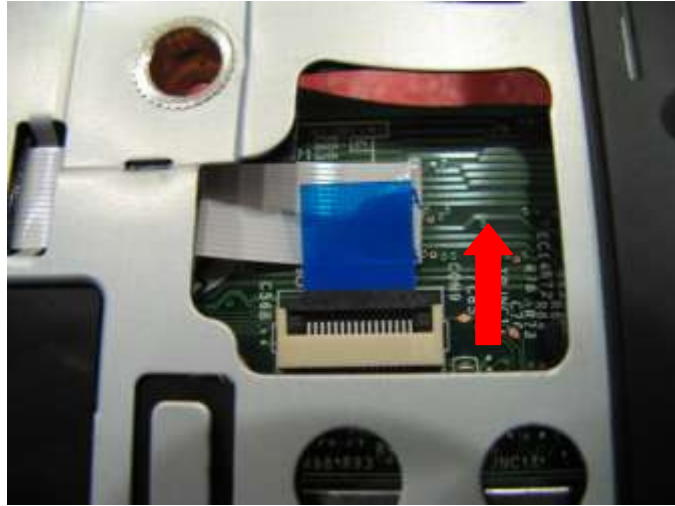
3.10: Draw out LED cable.



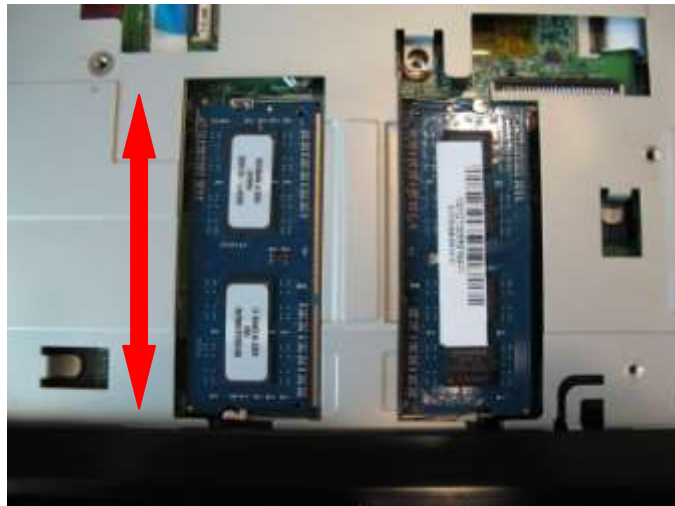
3.11: Disconnect the keyboard cable.

GT60 (MS-16F4) Disassembly Guide

3、KEYBOARD/MIDDLE COVER/WLAN MODULE.



3.12: Disconnect the Touchpad cable.



3.13: Remove the DRAM Module.

Component	P/N	Qty
DRAM Module	S7C-S56AD01-K37	2

GT60 (MS-16F4) Disassembly Guide

4、SEPARATE UPPER CASE AND LOWER CASE&ODD MODULE



4.1: Remove 2 pcs screws (M2.5*5mm).

Attention: the screw driver torque is 2.5-3.0Kgf-cm

Component	P/N	Qty
Screw	E43-1255001-H29	2



4.2: Remove the 11 pcs screws (M2.5*5mm) , then remove the upper case.

Attention: the screw driver torque is 2.5-3.0Kgf-cm

Component	P/N	Qty
Screw	E43-1255001-H29	11



4.3: Draw out ODD Module.

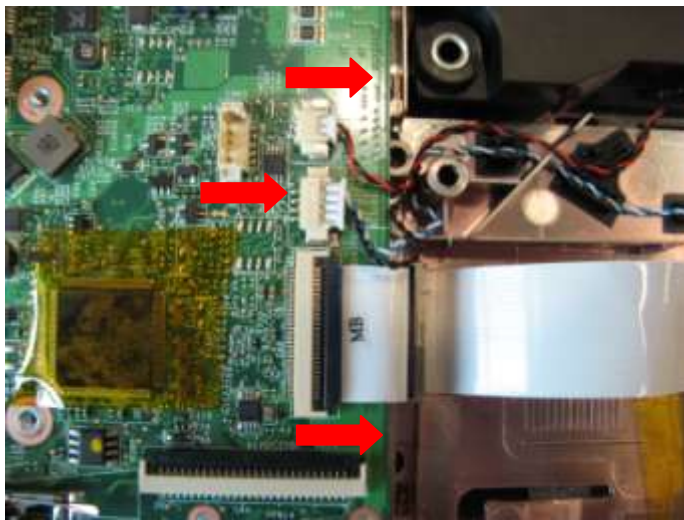
Component	P/N	Qty
ODD Module	S7D-2270087-T87	1

GT60 (MS-16F4) Disassembly Guide

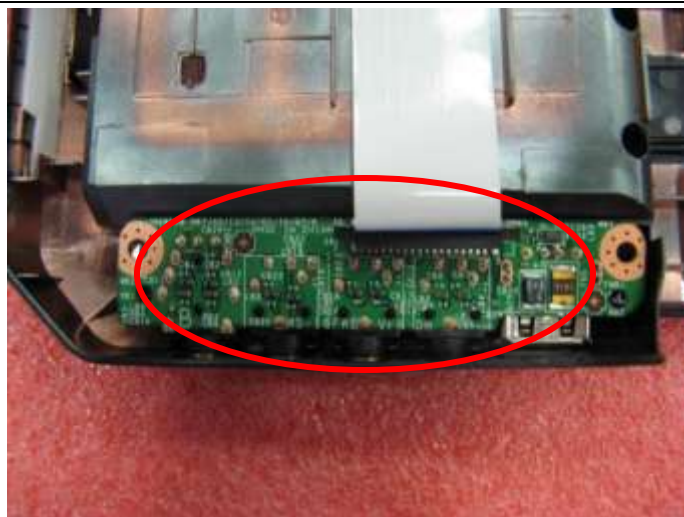
5、 LOWER CASE ASSY



5.1: Disconnect Touchpad Cable.



5.2: Disconnect the speaker cable and Audio cable.

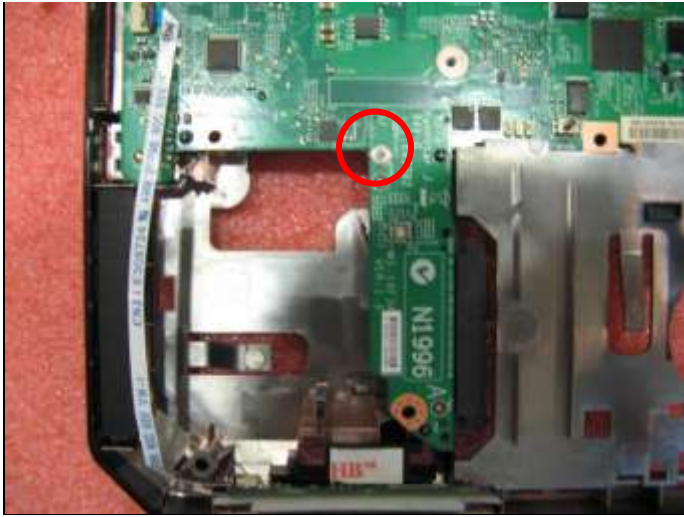


5.3: Remove the Audio board.

Component	P/N	Qty
Audio board	607-16F4B-C10	1

GT60 (MS-16F4) Disassembly Guide

5、 LOWER CASE ASSY



5.4: Remove the 1 pcs screws (M2*3mm).then remove the HDD connector board.

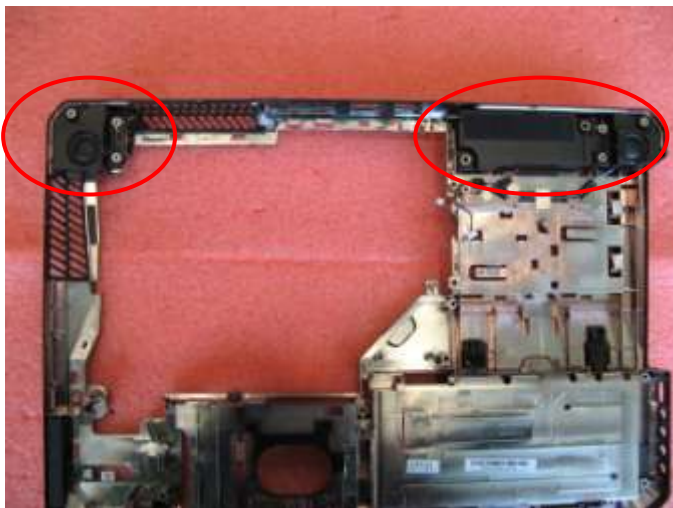
Attention: the screw driver torque is 1.5-2.0Kgf-cm

Component	P/N	Qty
screw	E43-1203003-H29	1
Connector board	607-16F4A-C10	1



5.5: Remove the main board from Lower case.

Component	P/N	Qty
Main Board	607-16F41-C10	1

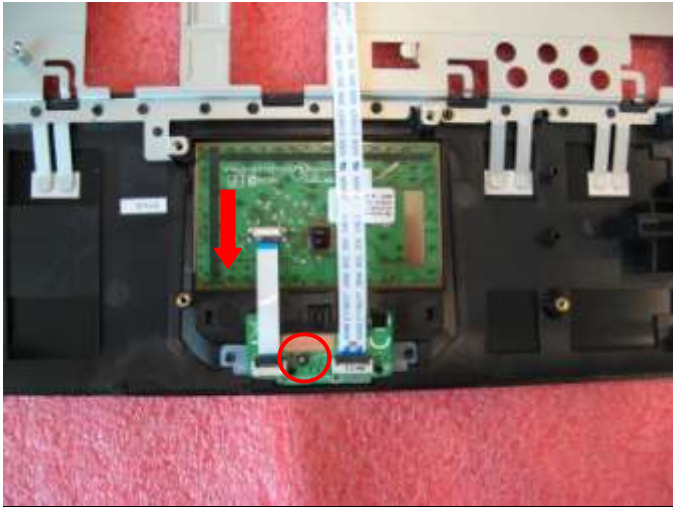


5.6: Remove the Speaker and woofer module from lower case.

Component	P/N	Qty
Woofer	S33-S030111-F33	1
Speaker Module	S33-A020230-F33	1
Lower Case	307-6FKD219-P89	1

GT60 (MS-16F4) Disassembly Guide

6、UPPER CASE ASSY



6.1: Remove 1 pcs screw (M2*3mm), then remove the T/P cable and T/P board.

Attention: the screw driver torque is 1.5-2.0Kgf-cm

Component	P/N	Qty
screw	E43-1203003-H29	1
Touchpad board	607-16F4D-C10	1

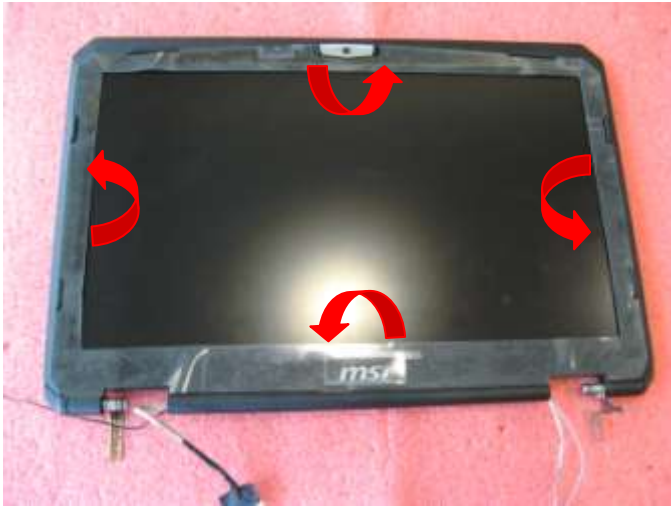


6.2: Remove the T/P module.

Component	P/N	Qty
Touchpad Module	S78-3700650-SD2	1

GT60 (MS-16F4) Disassembly Guide

7、 LCD MODULE ASSY



7.1: When removing the LCD bezel, should begin from the two sides, then the upside to downside.

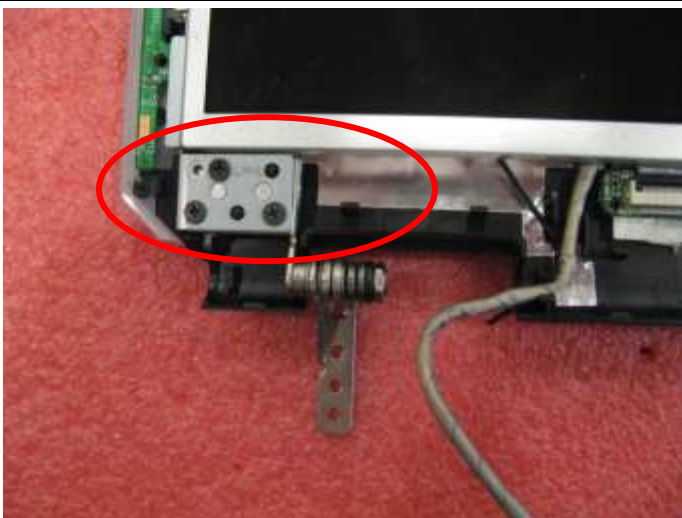
Component	P/N	Qty
LCD Bezel	307-6F4B254-P89	1



7.2: Remove the 2 pcs screws (M2.5*5mm).

Attention: the screw driver torque is 2.5-3.0Kgf-cm

Component	P/N	Qty
screw	E43-1255001-H29	2



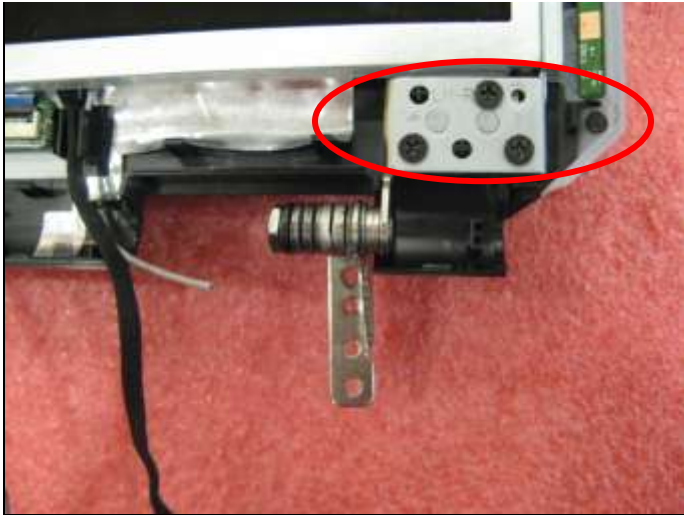
7.3: Remove the 3 pcs screws (M2.5*5mm) that stabilize the left hinge.

Attention: the screw driver torque is 2.5-3.0Kgf-cm

Component	P/N	Qty
screw	E43-1255001-H29	3
Hinge L	E2M-6F20811-G60	1

GT60 (MS-16F4) Disassembly Guide

7、 LCD MODULE ASSY



7.4: Remove the 3 pcs screws (M2.5*5mm) that stabilize the right hinge.

Attention: the screw driver torque is 2.5-3.0Kgf-cm

Component	P/N	Qty
Screw	E43-1255001-H29	3
Hinge R	M-6F20712-G60	1



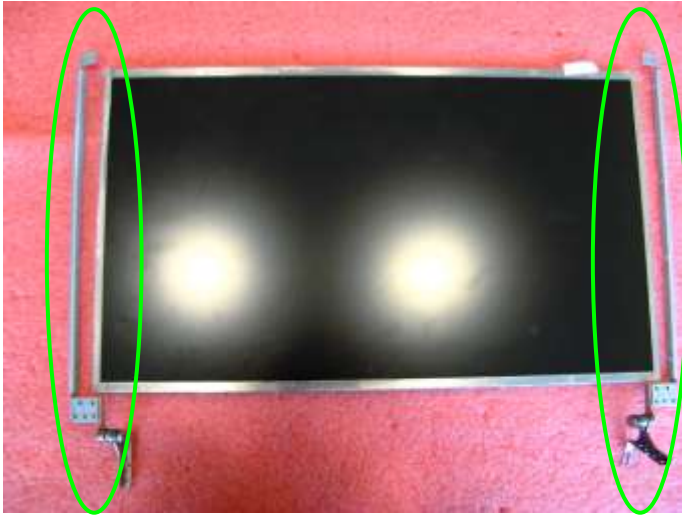
7.5: Remove the camera cable, then remove the display module from LCD cover.



7.6: Remove the LVDS cable from display module.

GT60 (MS-16F4) Disassembly Guide

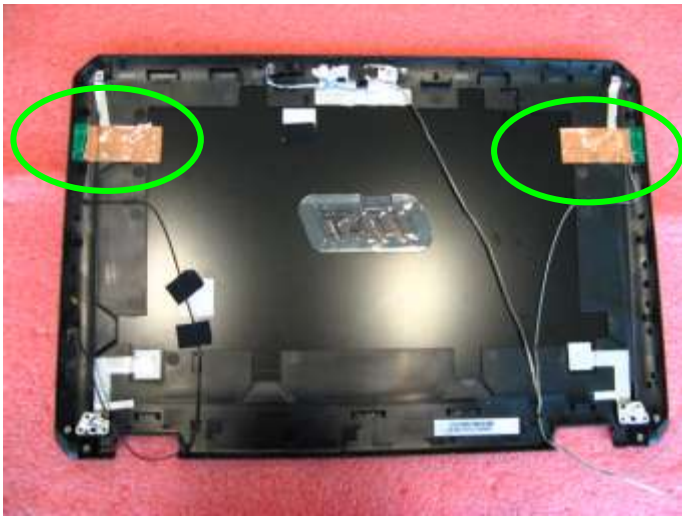
7、 LCD MODULE ASSY



7.7: Remove the 8 pcs screws (M2*3mm) then remove LCD Bracket L/R.

Attention: the screw driver torque is 1.5-2.0Kgf-cm

Component	P/N	Qty
Display Module	S1J-6E0A002-L47	1
Screw	E43-1203003-H29	8



7.8: Remove the WIRELESS L/R-Antenna board from LCD Cover.

Component	P/N	Qty
L-Antenna	S79-1801790-V03	1
R-Antenna	S79-1801780-V03	1
LCD Cover	307-6F3A212-Y31	1

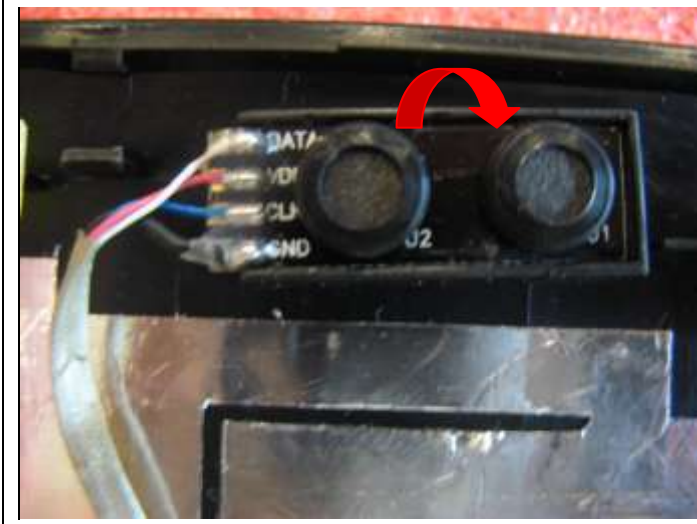


7.9: Remove the Camera Module

Component	P/N	Qty
Camera Module	S1F-0005300-B36	1

GT60 (MS-16F4) Disassembly Guide

7、 LCD MODULE ASSY



7.10: Remove the MIC Module as left picture show.

Component	P/N	Qty
MIC Module	S34-2101231-N44	1